

Subject: [radiojove-data] 23 Feb 2015 non-Io-B - RCP & LCP

From: Dave Typinski <davetyp@typnet.net>

Date: 02/25/2015 23:39

To: RadioJove-Data <radiojove-data@lists.nasa.gov>

Adding to Jim & Tom's nice reports, here's some non-Io-B from Monday morning.

Two very distinct emission events happening at the same time and separated by polarization.

RCP dominant L bursting from 16 to 26 MHz. No modulation lanes visible.

LCP dominant L bursting from 16 to 19 MHz. No modulation lanes visible.

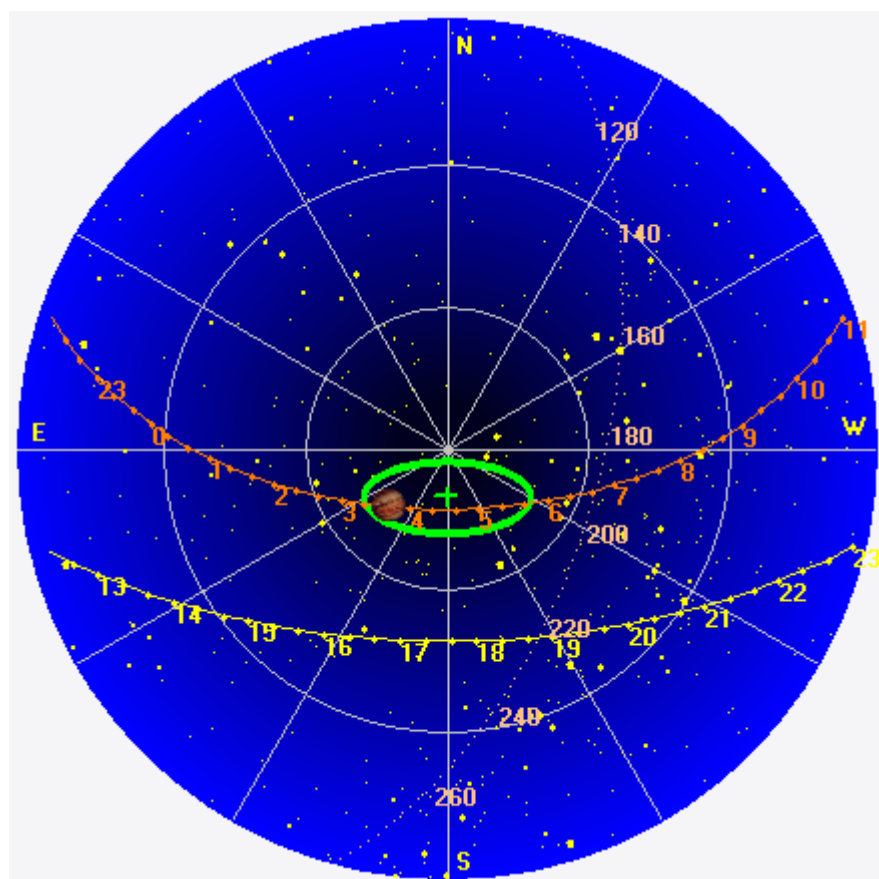
Jupiter was -29° to -4° off axis.

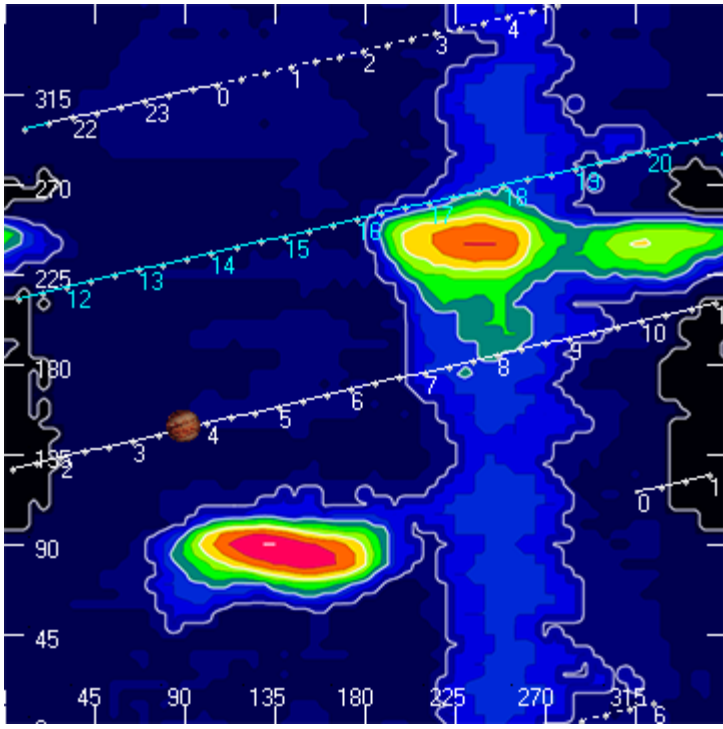
Jupiter was trailing the Sun by 161° .

--

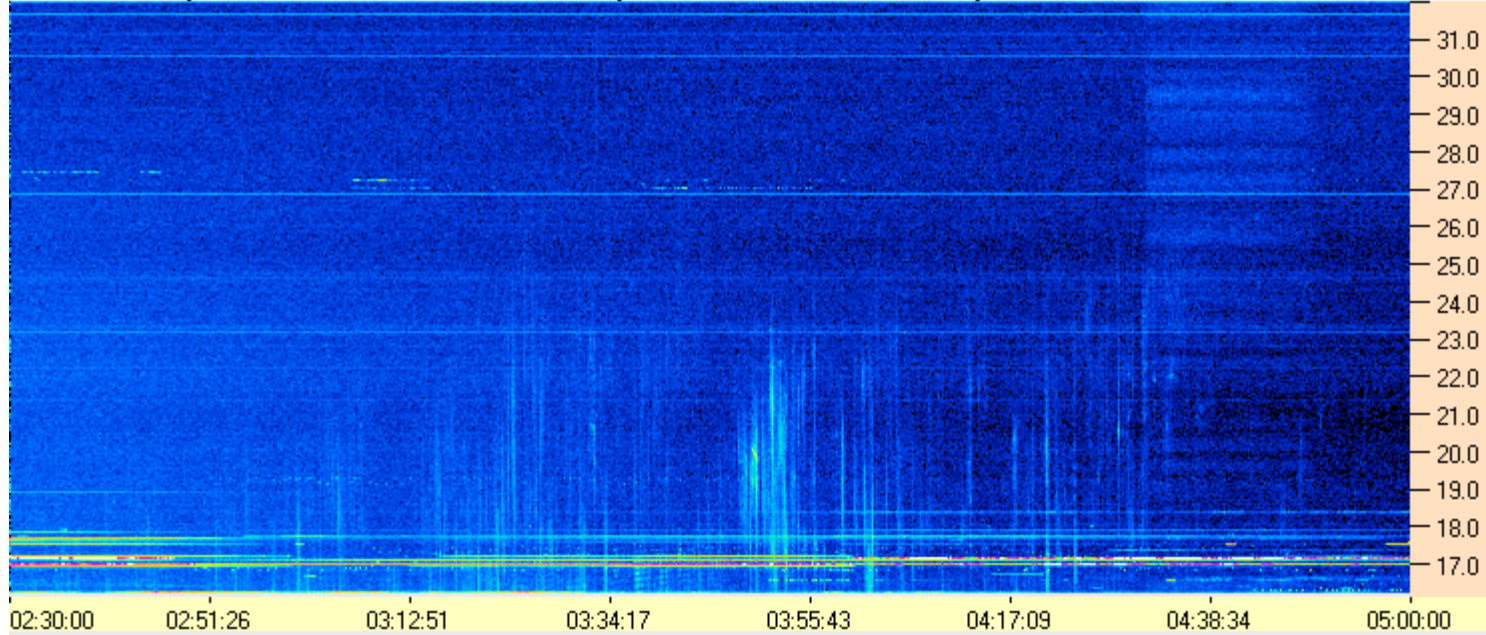
Dave

AJ4CO Observatory 23 Feb 2015, log entry 341, 342

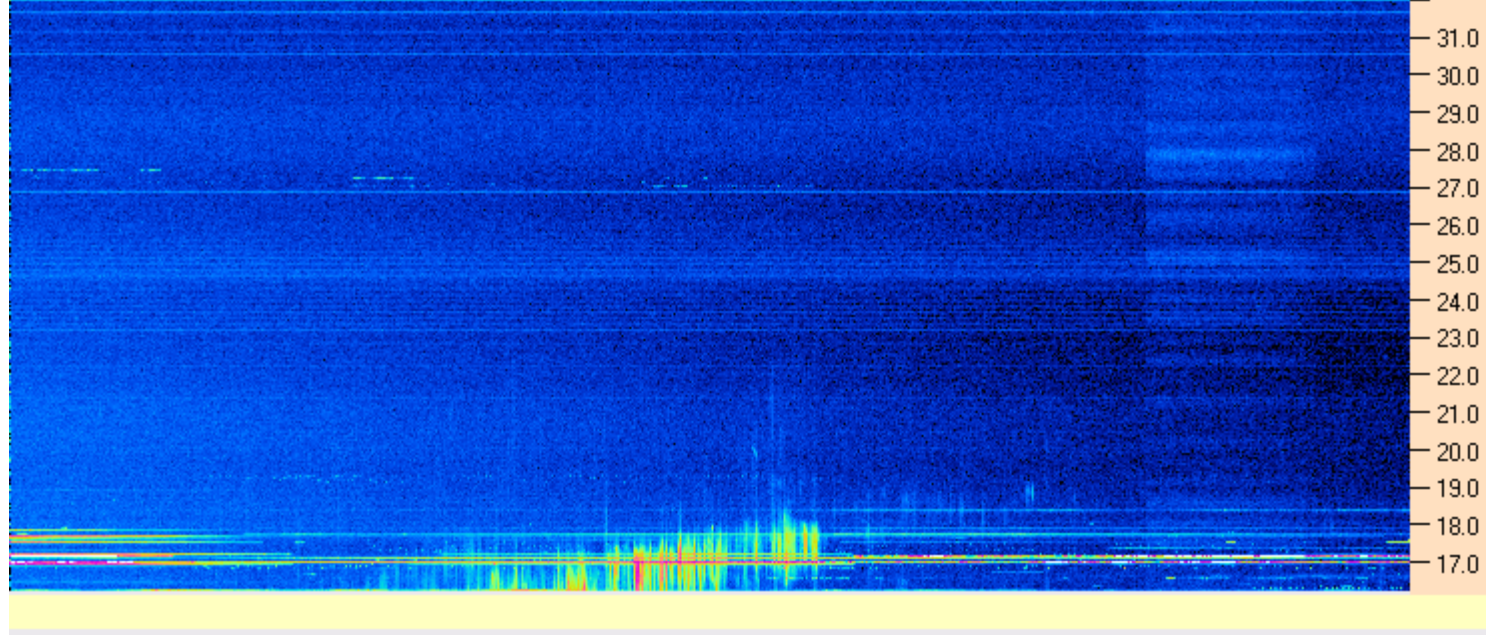




AJ4CO Observatory - 23 Feb 2015 - DPS 30 kHz IF on TFD Array in CP Mode - RCP Correction Array 2014 12 18B.csv Offset 2050 Gain 5.0



AJ4CO Observatory - 23 Feb 2015 - DPS 30 kHz IF on TFD Array in CP Mode - LCP Correction Array 2014 12 18B.csv Offset 2050 Gain 5.0



02/23/2015 by AJ4CO RSP in High Springs, FL

