

Subject: [radiojove-data] 22 Feb 2015 non-Io-A

From: Dave Typinski <davetyp@typnet.net>

Date: 02/24/2015 23:09

To: RadioJove-Data <radiojove-data@lists.nasa.gov>

Here's some non-Io-A from Sunday morning.

RCP dominant L bursting from 16 to 23 MHz. No modulation lanes visible.

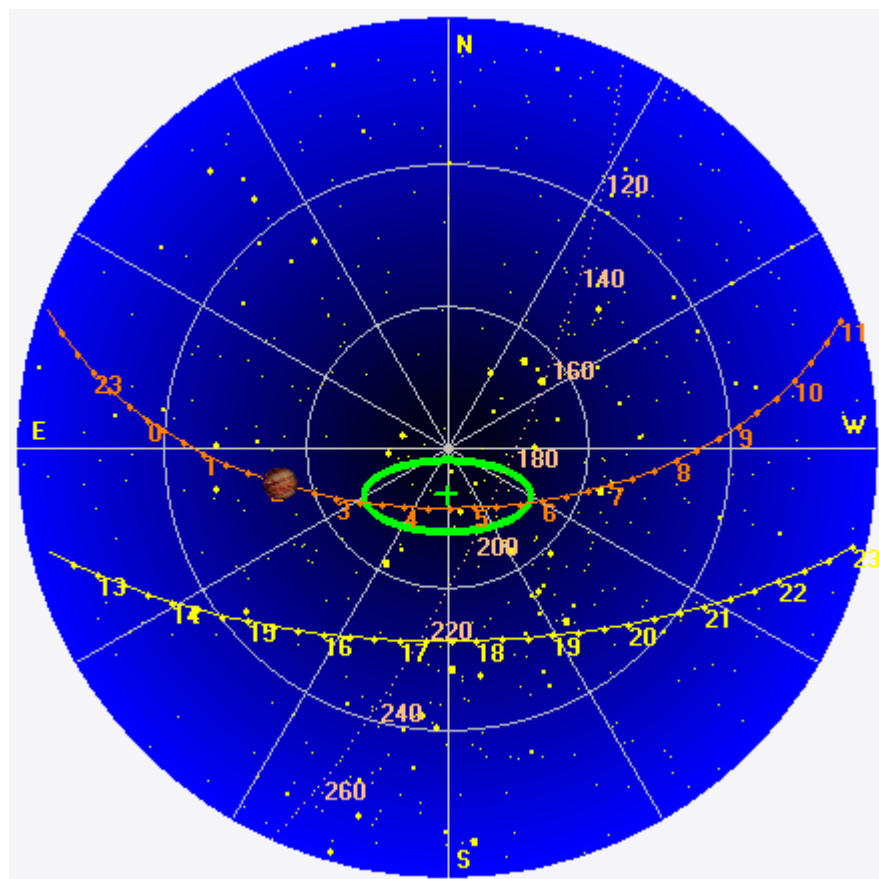
Jupiter was -43° to -27° off axis.

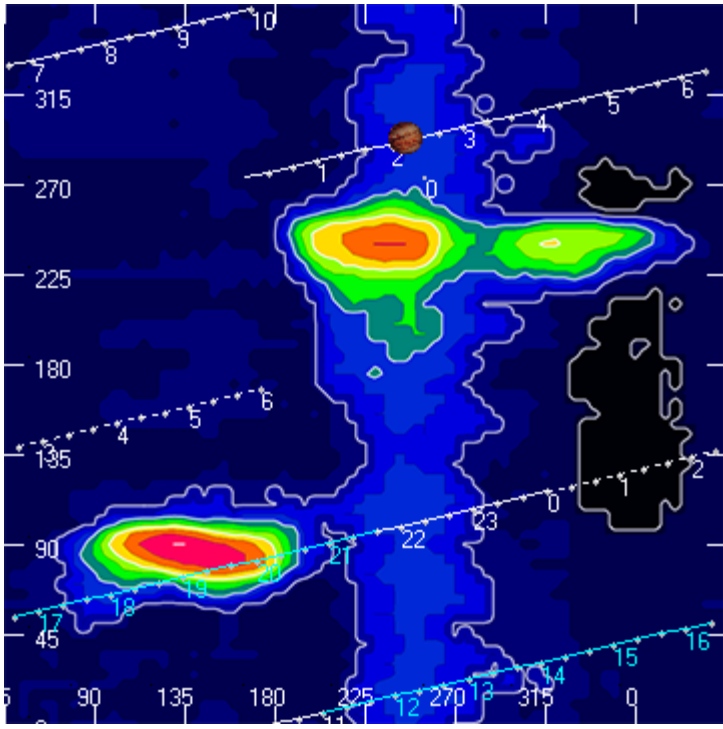
Jupiter was trailing the Sun by 163° .

--

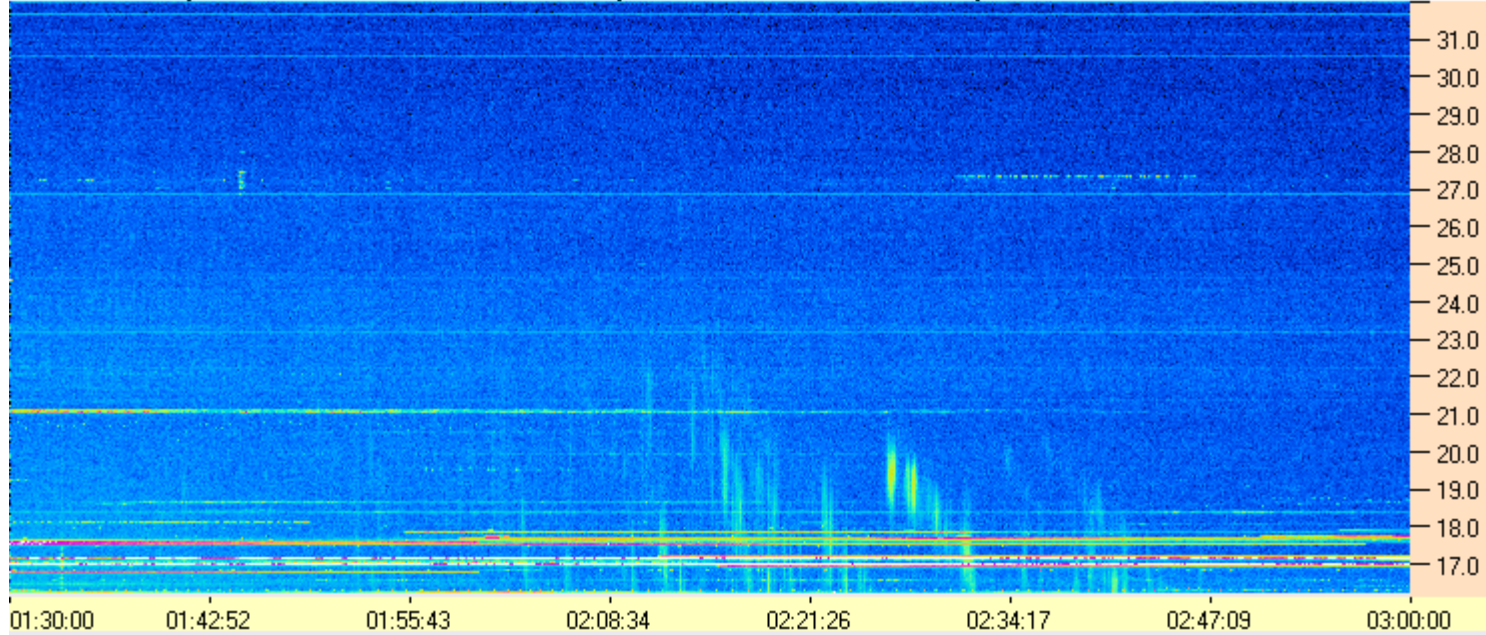
Dave

AJ4CO Observatory 22 Feb 2015, log entry 340





AJ4CO Observatory - 22 Feb 2015 - DPS 30 kHz IF on TFD Array in CP Mode - RCP Correction Array 2014 12 18B.csv Offset 2050 Gain 5.0



AJ4CO Observatory - 22 Feb 2015 - DPS 30 kHz IF on TFD Array in CP Mode - LCP Correction Array 2014 12 18B.csv Offset 2050 Gain 5.0

