

Subject: [radiojove-data] 21 Feb 2015 Io-B, Io-D, and non-Io-A

From: Dave Typinski <davetyp@typnet.net>

Date: 02/22/2015 21:15

To: RadioJove-Data <radiojove-data@lists.nasa.gov>

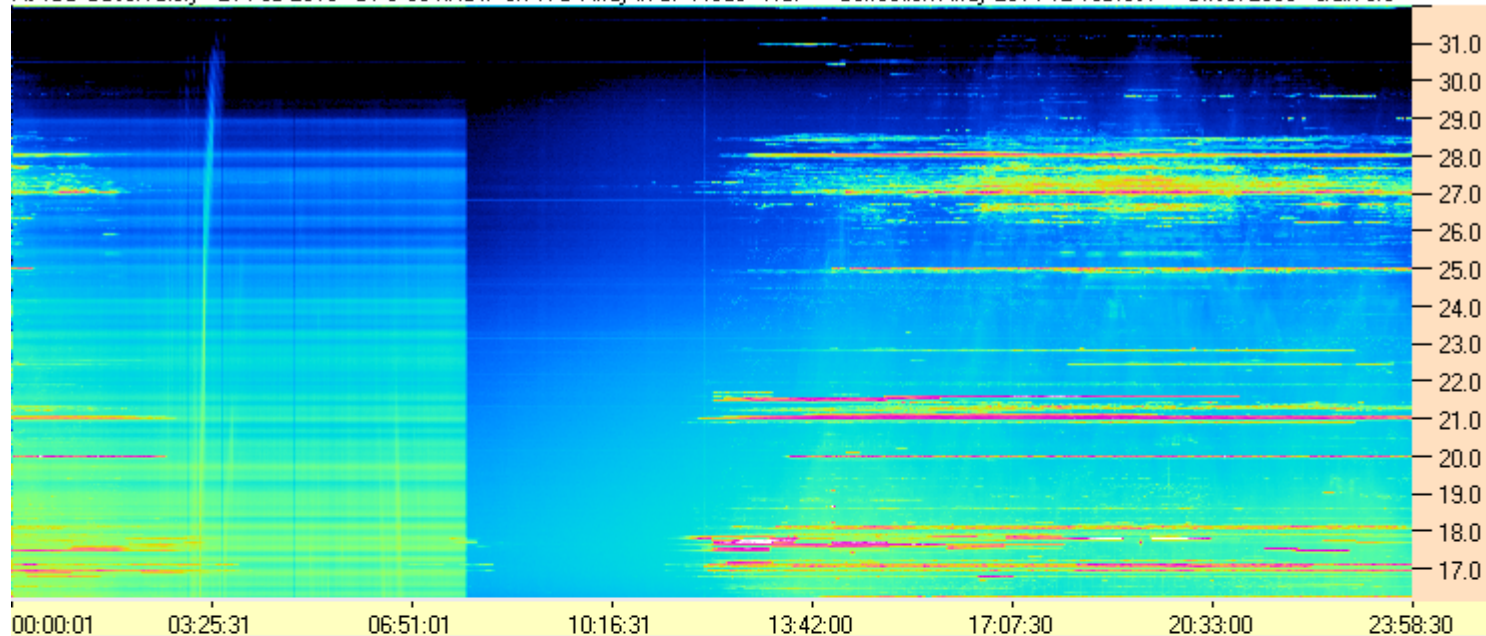
Adding to Jim & Wes & Tom's really nice and useful reports, here's a nearly useless bag of suck from AJ4CO and the Duke Energy team.

Definitely some LCP Io-D in there behind the line noise.

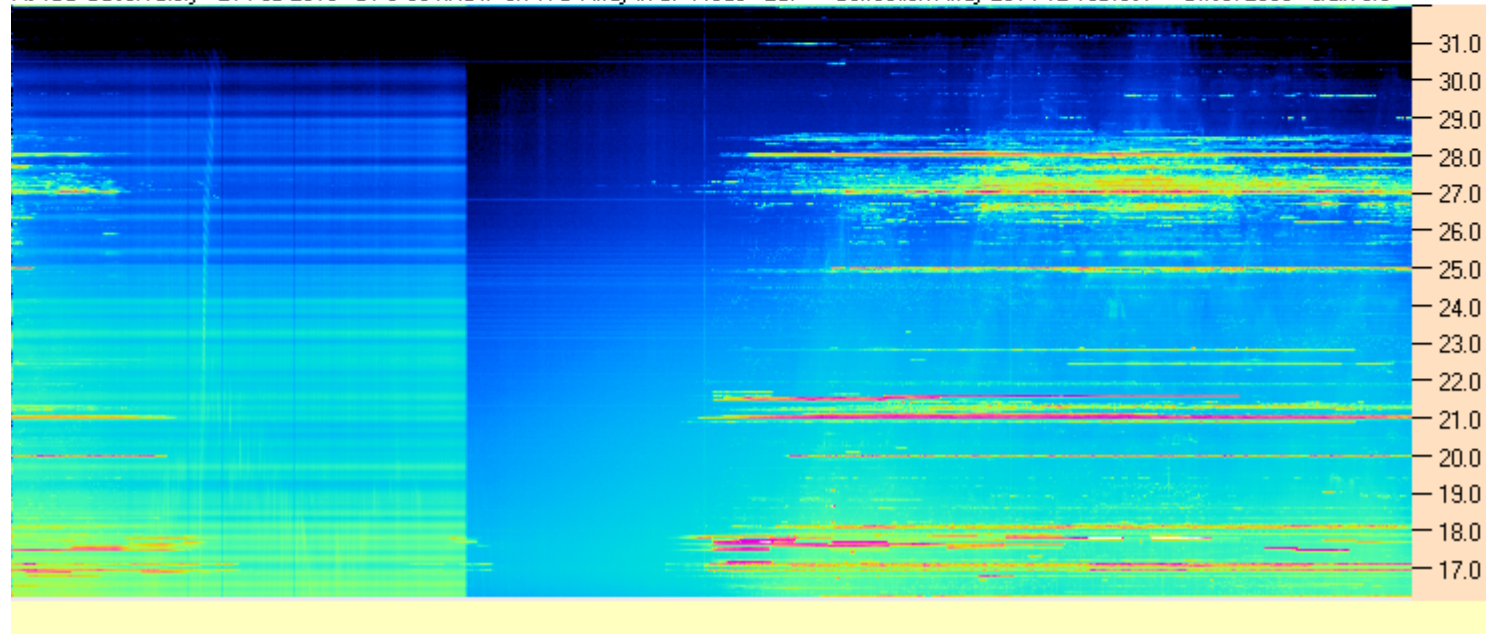
--

Dave

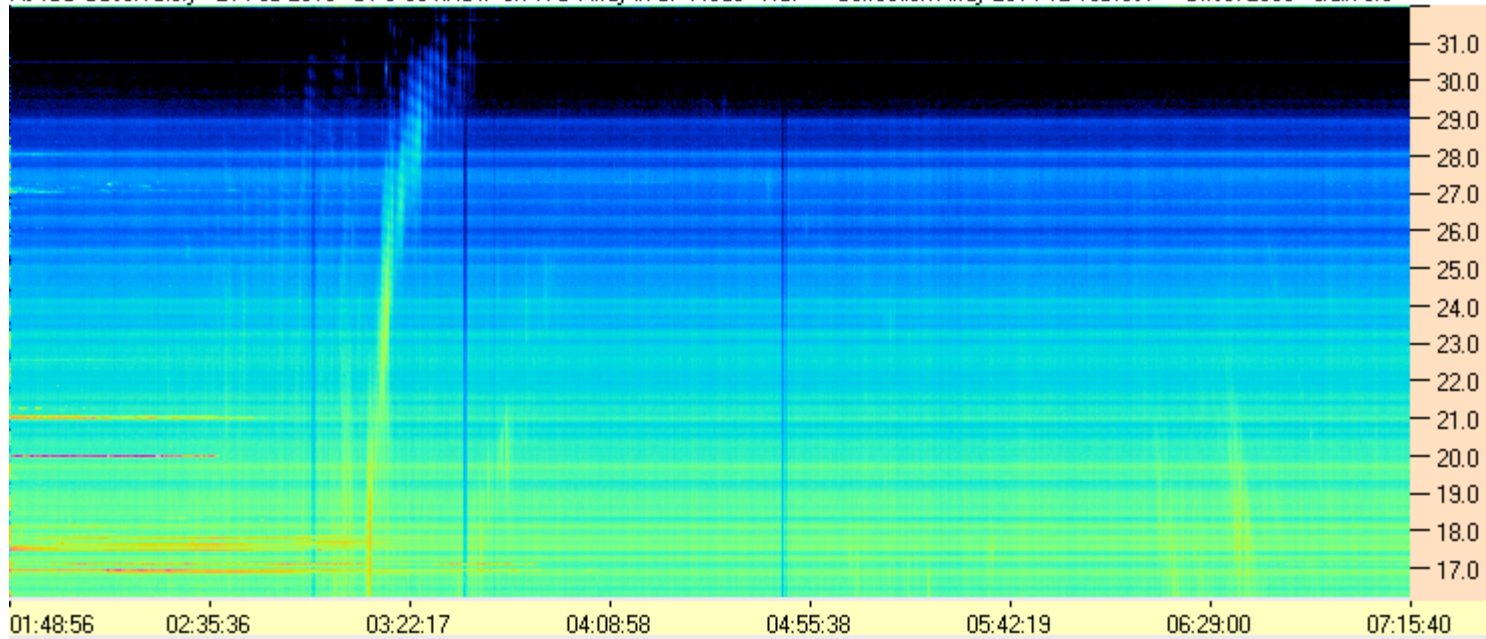
AJ4CO Observatory - 21 Feb 2015 - DPS 30 kHz IF on TFD Array in CP Mode - RCP Correction Array 2014 12 18B.csv Offset 2050 Gain 5.0



AJ4CO Observatory - 21 Feb 2015 - DPS 30 kHz IF on TFD Array in CP Mode - LCP Correction Array 2014 12 18B.csv Offset 2050 Gain 5.0



AJ4CO Observatory - 21 Feb 2015 - DPS 30 kHz IF on TFD Array in CP Mode - RCP Correction Array 2014 12 18B.csv Offset 2050 Gain 5.0



AJ4CO Observatory - 21 Feb 2015 - DPS 30 kHz IF on TFD Array in CP Mode - LCP Correction Array 2014 12 18B.csv Offset 2050 Gain 5.0

