

**Subject:** [radiojove-data] 20 Feb 2015 Io-C

**From:** Dave Typinski <davetyp@typnet.net>

**Date:** 02/24/2015 23:17

**To:** RadioJove-Data <radiojove-data@lists.nasa.gov>

Adding to Jim & Tom's nice reports, here's some Io-C from Friday morning.

LCP dominant L bursting from 16 to 20 MHz. No modulation lanes visible.

Jupiter was  $-46^\circ$  to  $-26^\circ$  off axis.

Jupiter was trailing the Sun by  $165^\circ$ .

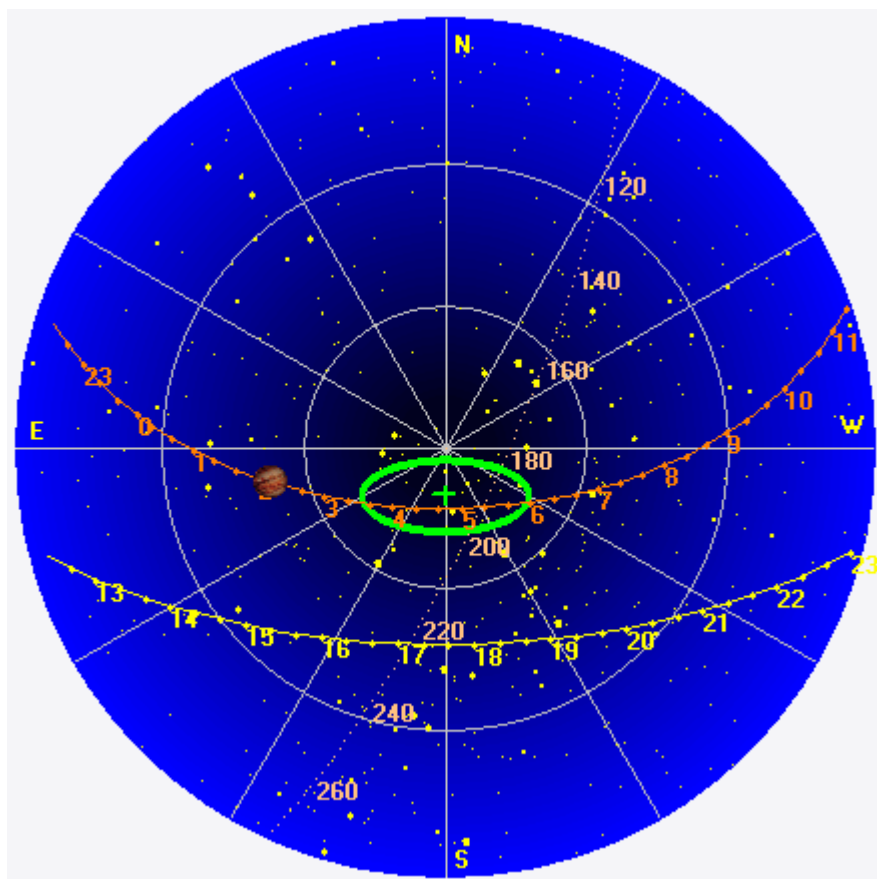
--

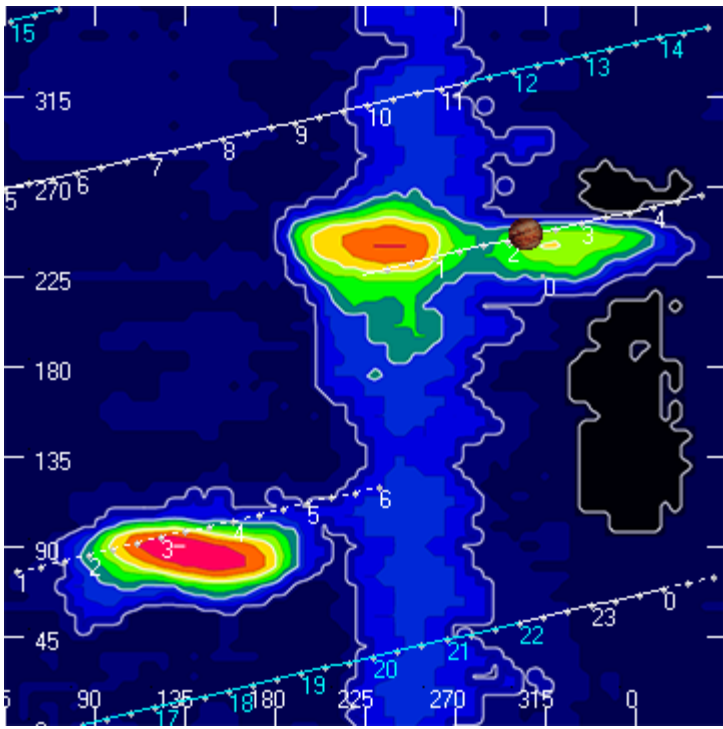
Dave

---

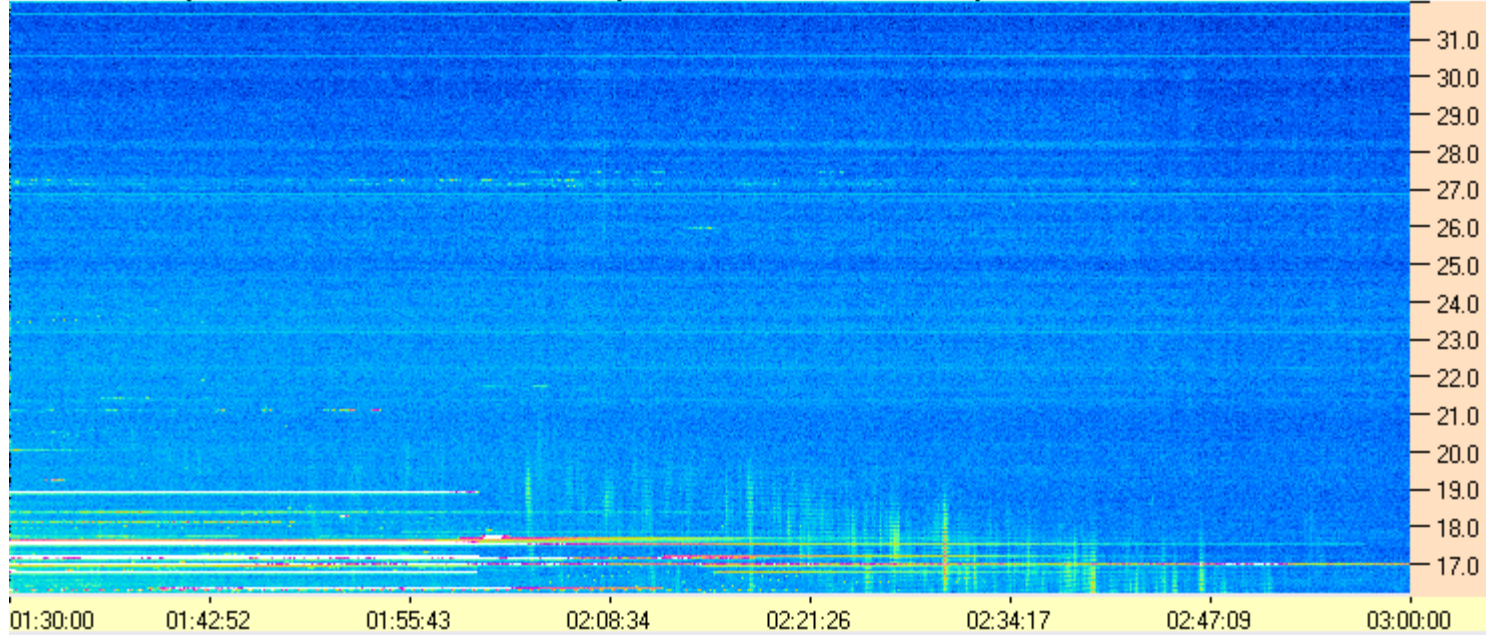
**AJ4CO Observatory 20 Feb 2015, log entry 336**

---





AJ4CO Observatory - 20 Feb 2015 - DPS 30 kHz IF on TFD Array in CP Mode - RCP Correction Array 2014 12 18B.csv Offset 2050 Gain 5.0



AJ4CO Observatory - 20 Feb 2015 - DPS 30 kHz IF on TFD Array in CP Mode - LCP Correction Array 2014 12 18B.csv Offset 2050 Gain 5.0

