

Subject: [radiojove-data] 18 Feb 2015 Io-A

From: Dave Typinski <davetyp@typnet.net>

Date: 02/18/2015 23:14

To: RadioJove-Data <radiojove-data@lists.nasa.gov>

Adding to Jim & Tom & Wes's nice reports, here's some Io-A from Wednesday morning.

RCP dominant L bursting from 16 to 22 MHz. No modulation lanes visible.

Low level line noise on and off throughout the morning.

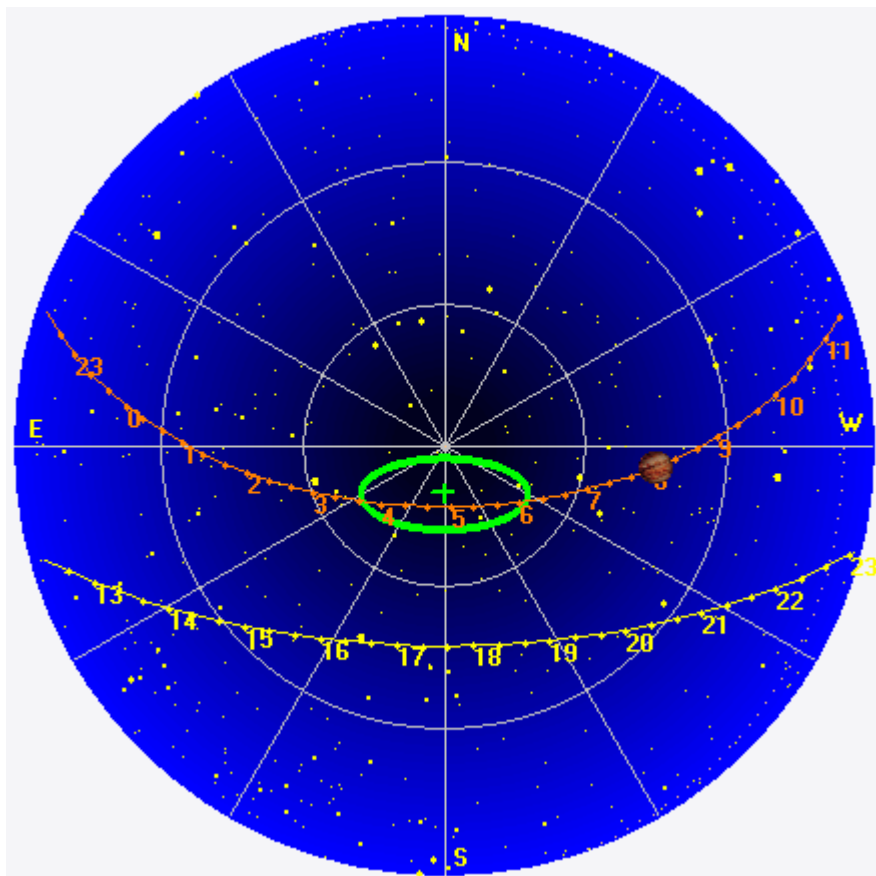
Jupiter was +31° to +58° off axis.

Jupiter was trailing the Sun by 167°.

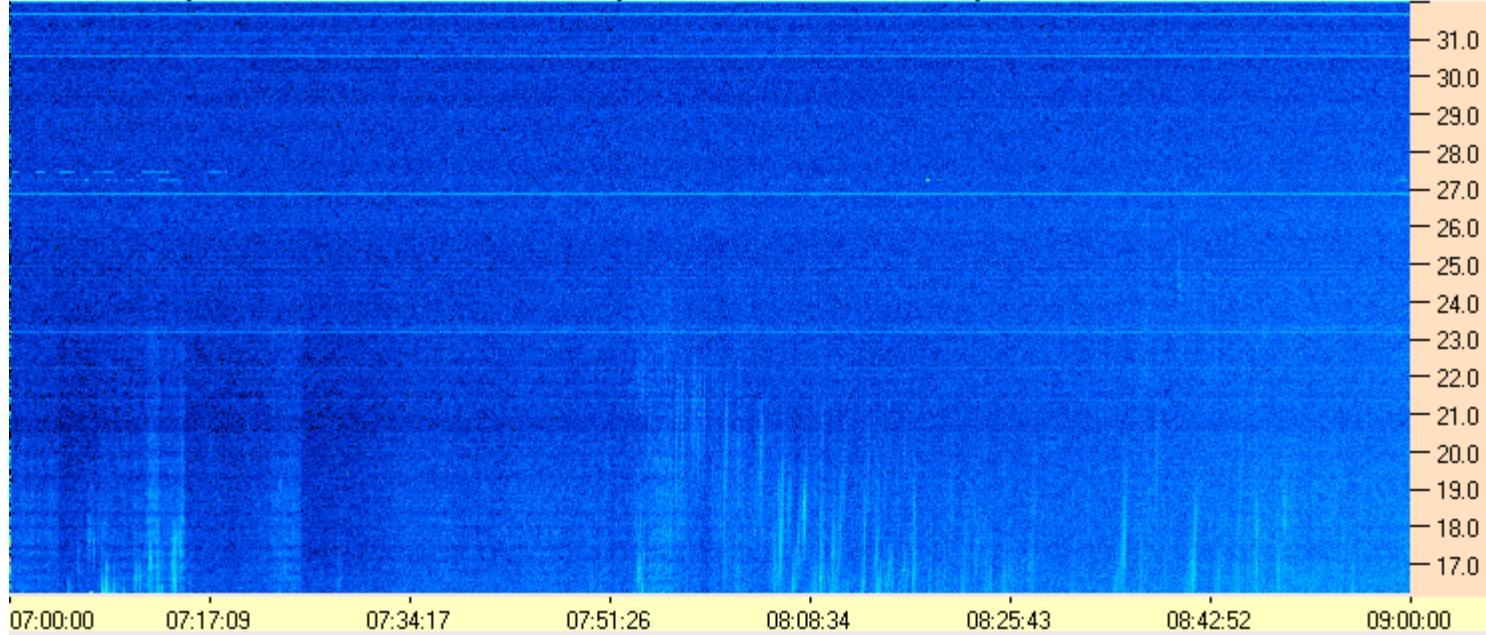
--

Dave

AJ4CO Observatory 18 Feb 2015, log entry 334



AJ4CO Observatory - 18 Feb 2015 - DPS 30 kHz IF on TFD Array in CP Mode - RCP Correction Array 2014 12 18B.csv Offset 2050 Gain 5.0



AJ4CO Observatory - 18 Feb 2015 - DPS 30 kHz IF on TFD Array in CP Mode - LCP Correction Array 2014 12 18B.csv Offset 2050 Gain 5.0

