

Subject: [radiojove-data] 15 Feb 2015 non-Io-A/C

From: Dave Typinski <davetyp@typnet.net>

Date: 02/17/2015 21:09

To: RadioJove-Data <radiojove-data@lists.nasa.gov>

Here's some non-Io-A/C from Sunday morning.

RCP dominant L bursting from 16 to 20 MHz. No modulation lanes visible.

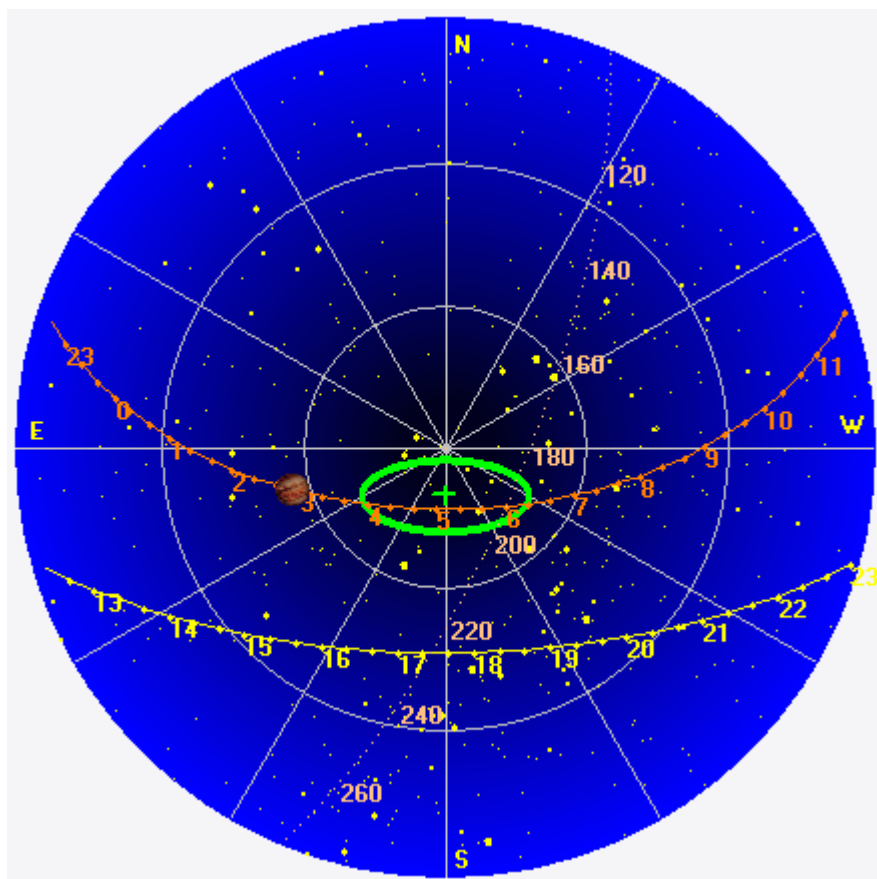
Jupiter was -39° to -25° off axis.

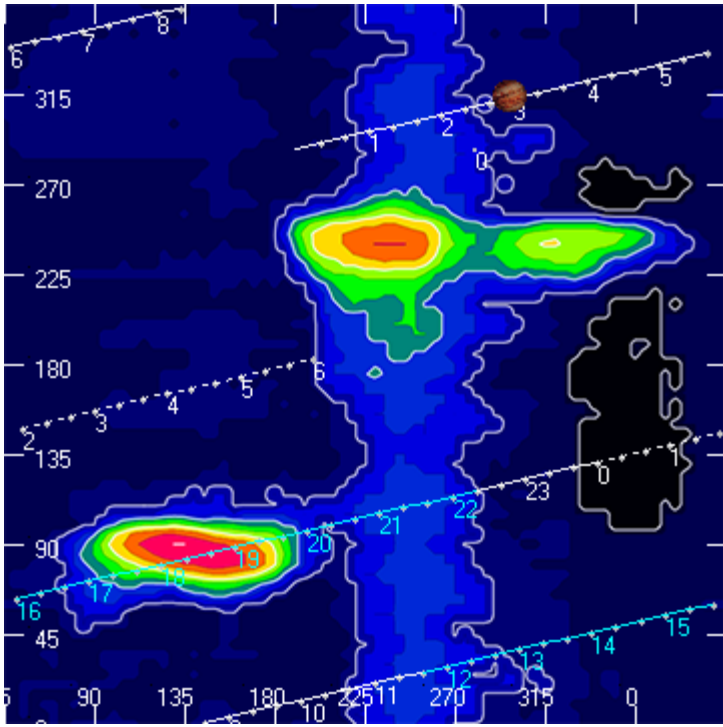
Jupiter was trailing the Sun by 170° .

--

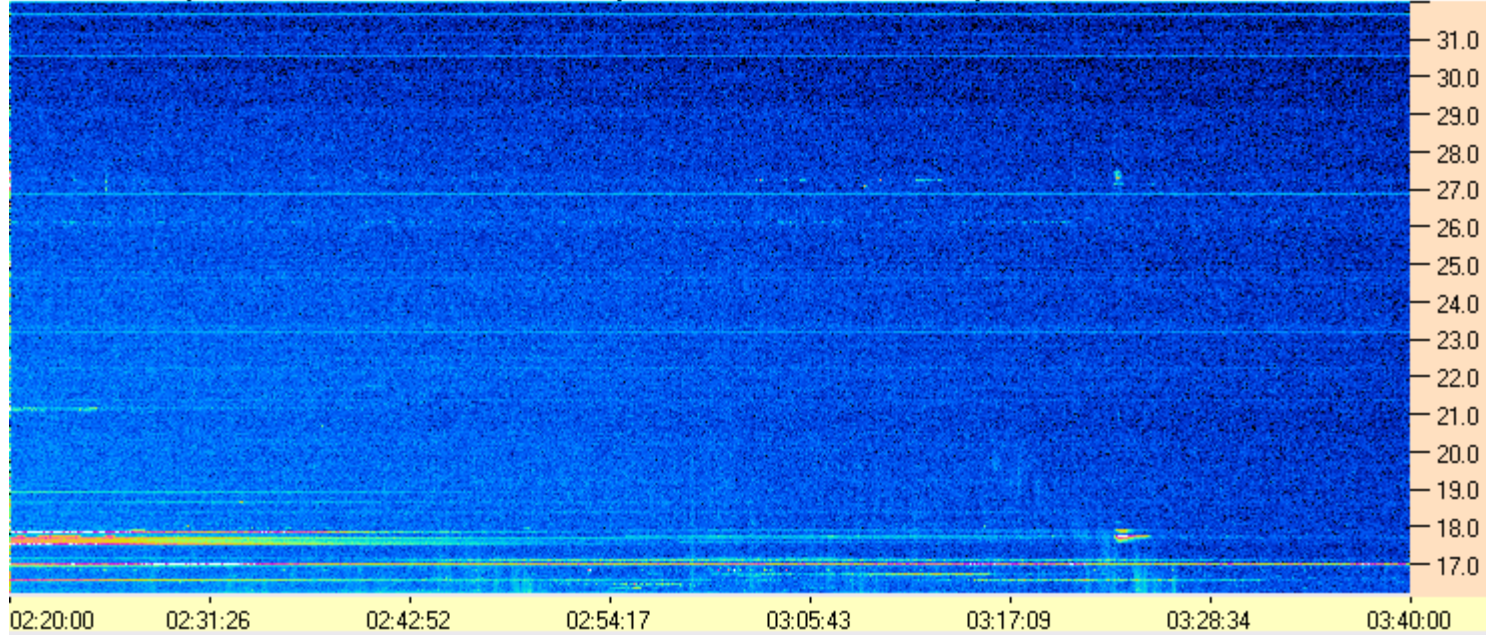
Dave

AJ4CO Observatory 15 Feb 2015, log entry 328





AJ4CO Observatory - 15 Feb 2015 - DPS 30 kHz IF on TFD Array in CP Mode - RCP Correction Array 2014 12 18B.csv Offset 2070 Gain 6.0



AJ4CO Observatory - 15 Feb 2015 - DPS 30 kHz IF on TFD Array in CP Mode - LCP Correction Array 2014 12 18B.csv Offset 2070 Gain 6.0

