

Subject: 11 Feb 2015 Possible Tau A scintillation

From: Dave Typinski <davetyp@typnet.net>

Date: 02/17/2015 01:48

To: Richard Flagg <rf@hawaii.rr.com>, Chuck Higgins <chiggins@mtsu.edu>, Francisco Reyes <reyes@astro.ufl.edu>, Wes Greenman <jugazer@windstream.net>, Jim Brown <starmanjb@comcast.net>, Andy Mount <capeorion@gmail.com>, Tom Ashcraft <ashcraft@heliotown.com>, Jim Sky <radiosky@radiosky.com>, Dave Typinski <davetyp@typnet.net>, Jim Thieman <james.r.thieman-1@nasa.gov>, Whit Reeve <whitreeve@gmail.com>

Hi all,

Tau A is now transiting after sunset and only a few degs higher elevation than Jupiter.

In October/November, Cas A was transiting about 3.5 hours after sunset. We saw good scintillation then.

Currently, Tau A is transiting 2.5 hours after sunset.

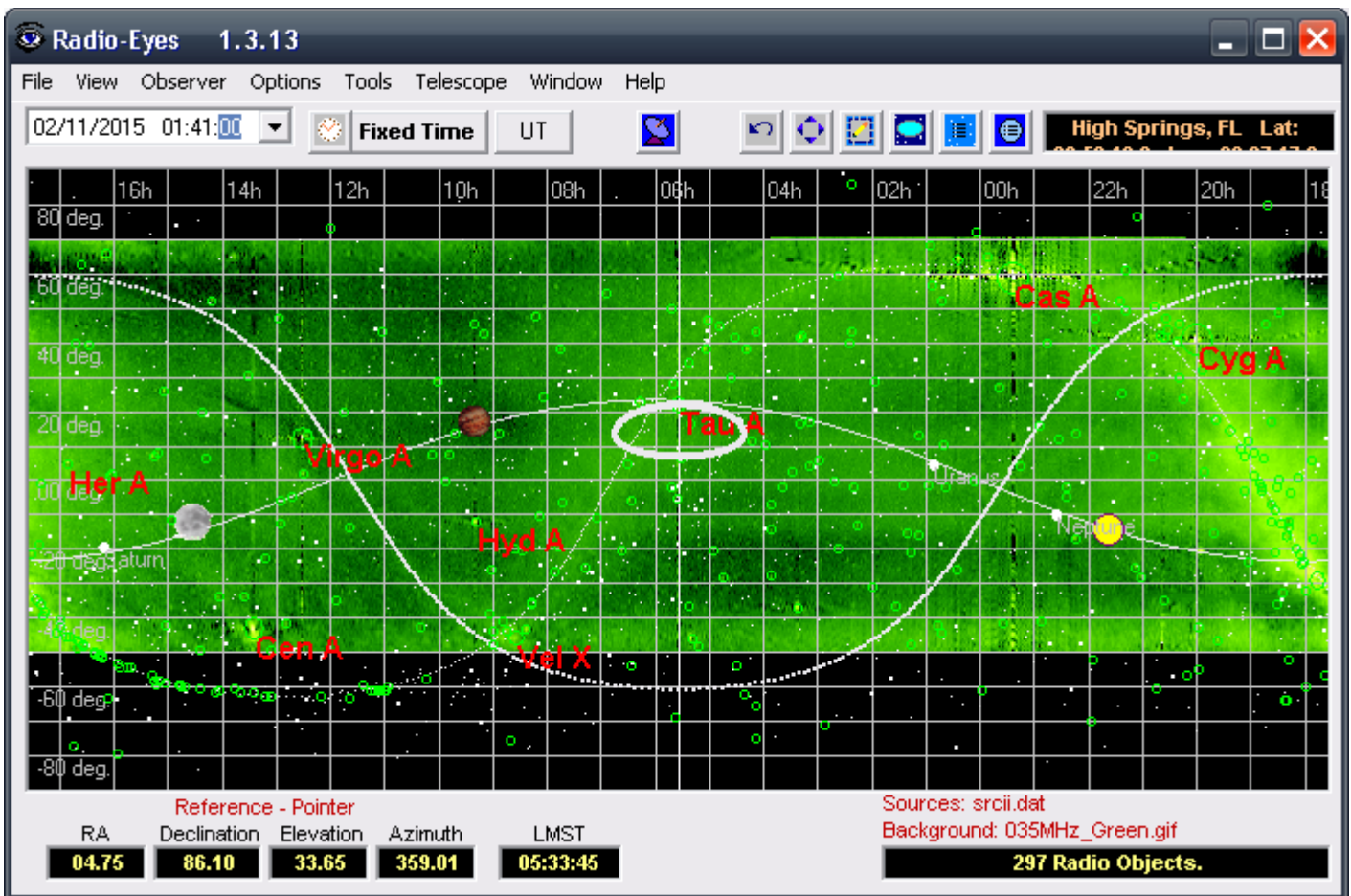
Saw a few features on 2/11 that look like really faint scintillation, but I'm not sure. The two vertical streaks either side of 0255 UTC look too fuzzy to be radar sweepers. Unfortunately, that's not much to go on.

Haven't seen anything from Tau A before or since 2/11.

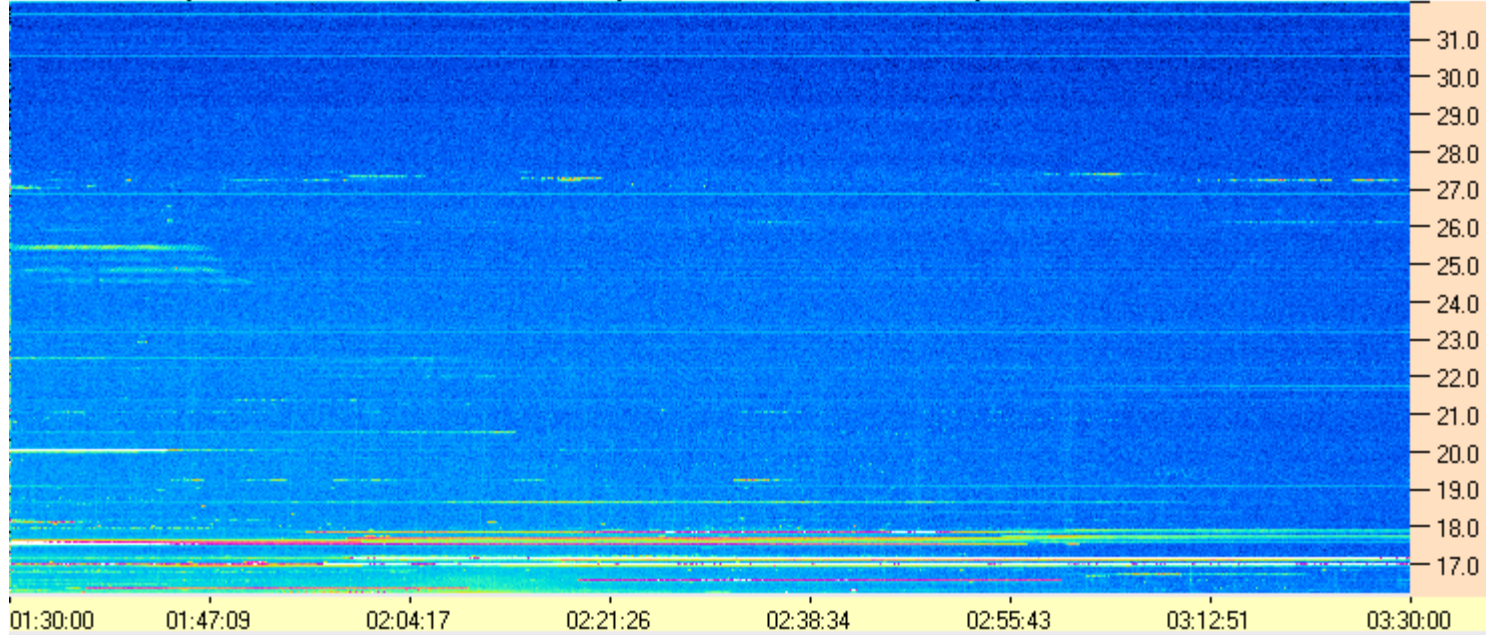
Jupiter is moving up in transit elevation (currently 77 degs for Wes and I), so I've moved the TFD array beam from 75 to 80 degs elevation. Maybe the additional 3 dB will make Tau A scintillation show up better, if it's there to see.

--

Dave



AJ4CO Observatory - 11 Feb 2015 - DPS 30 kHz IF on TFD Array in CP Mode - RCP Correction Array 2014 12 18B.csv Offset 2050 Gain 5.0



AJ4CO Observatory - 11 Feb 2015 - DPS 30 kHz IF on TFD Array in CP Mode - LCP Correction Array 2014 12 18B.csv Offset 2050 Gain 5.0

