

Subject: [radiojove-data] 10 Feb 2015 non-Io-C

From: Dave Typinski <davetyp@typnet.net>

Date: 02/12/2015 00:22

To: RadioJove-Data <radiojove-data@lists.nasa.gov>

Adding to Tom & David & Wes & Jim's nice reports, here's some non-Io-C from Tuesday morning. Or maybe it was an Io-D low pass. The difference between non-Io-C and Io-D at the low Io phase angles is poorly defined.

LCP dominant L bursting from 16 to 18 MHz. Deep ionospheric lanes visible around 0540 UTC.

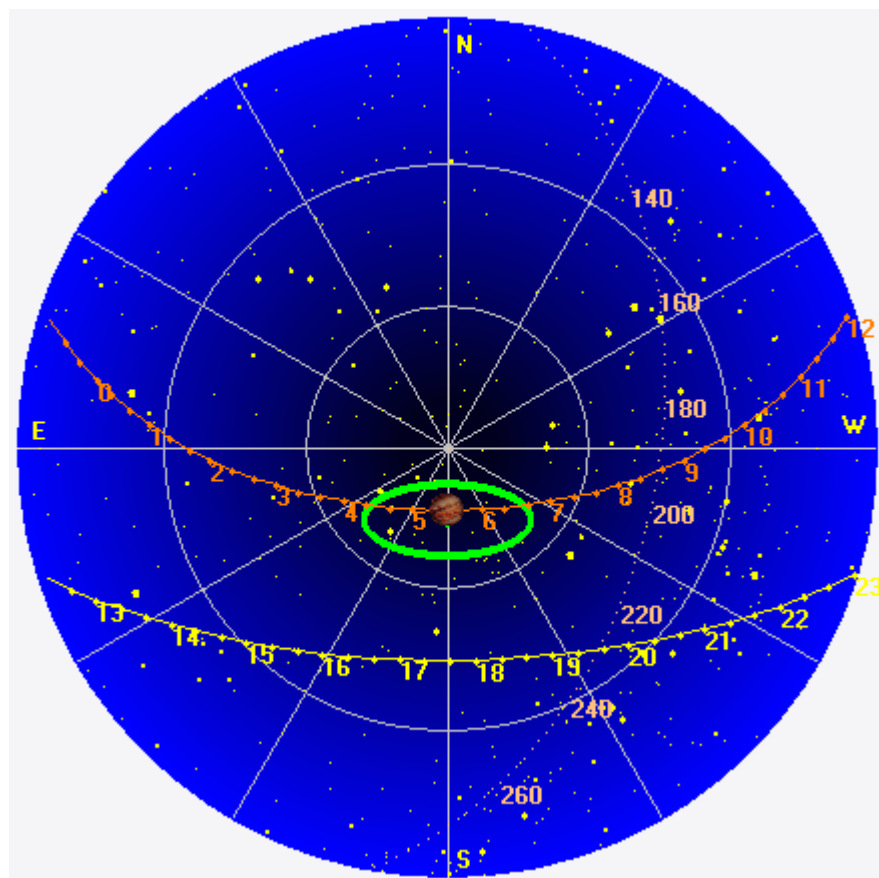
Jupiter was -7° to $+8^\circ$ off axis.

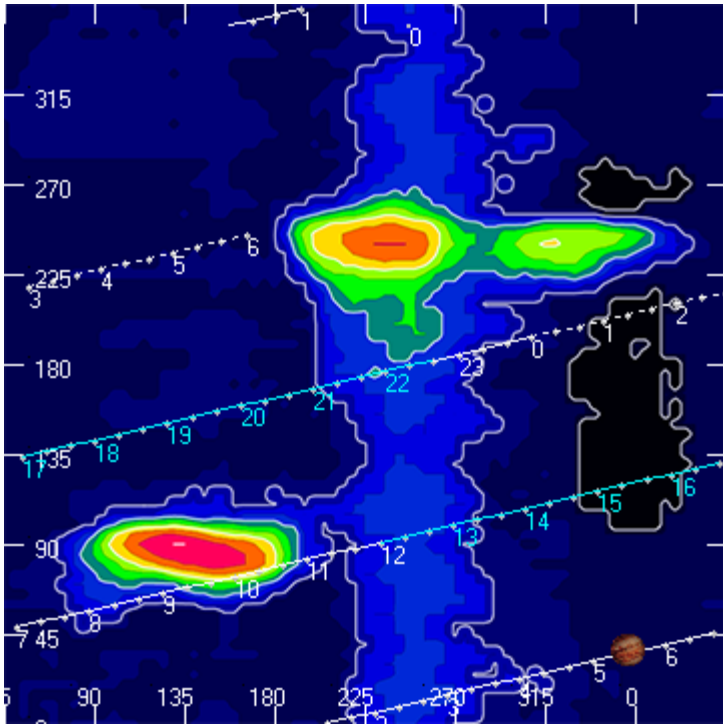
Jupiter was trailing the Sun by 176° .

--

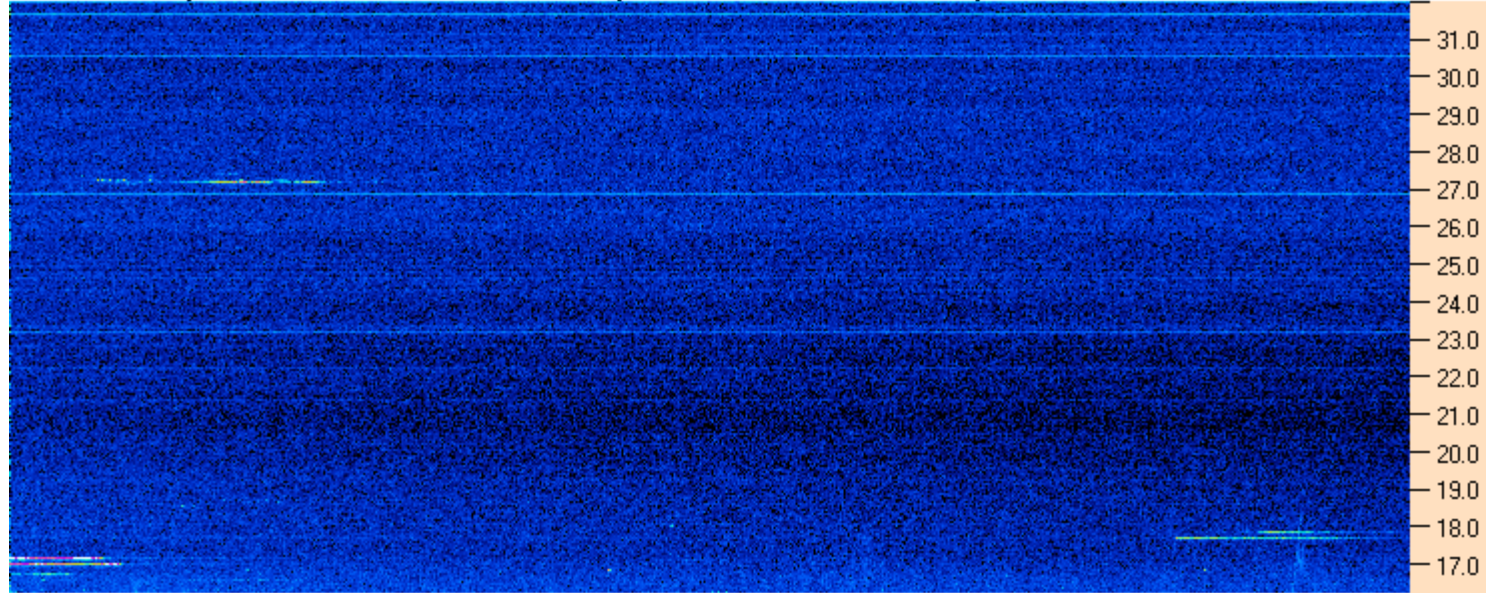
Dave

AJ4CO Observatory 10 Feb 2015, log entry 319



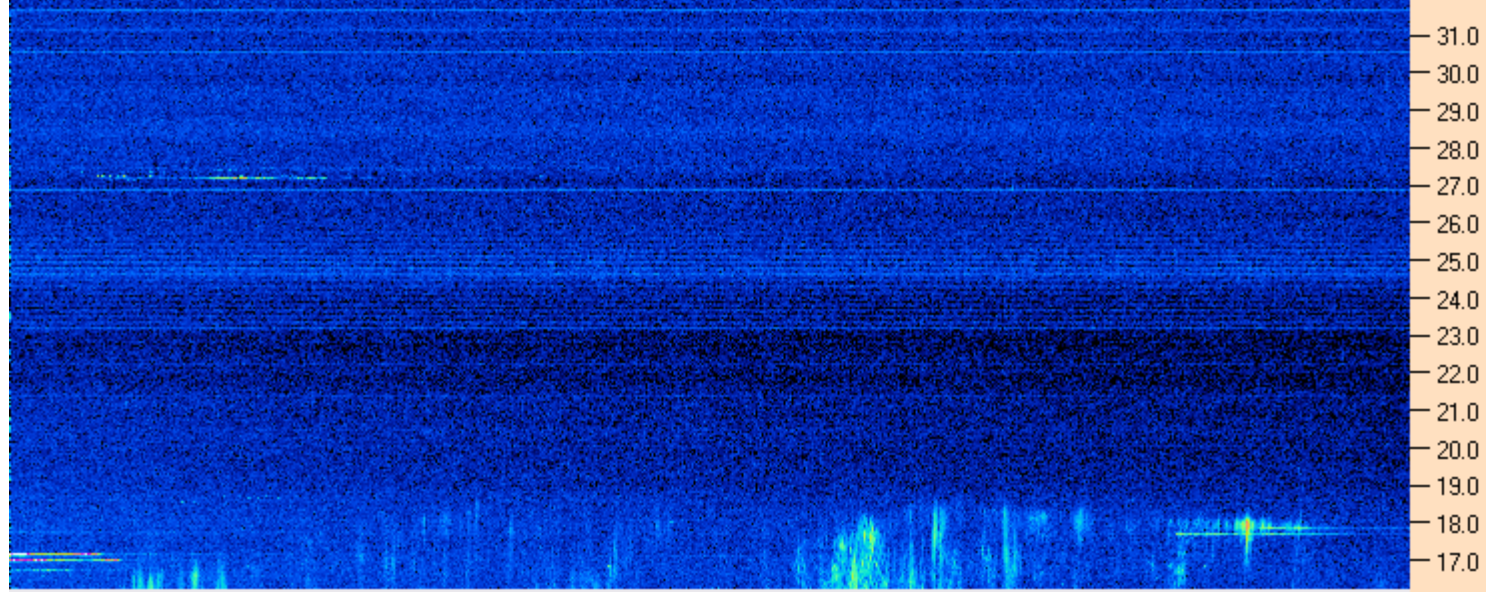


AJ4CO Observatory - 10 Feb 2015 - DPS 30 kHz IF on TFD Array in CP Mode - RCP Correction Array 2014 12 18B.csv Offset 2050 Gain 5.0

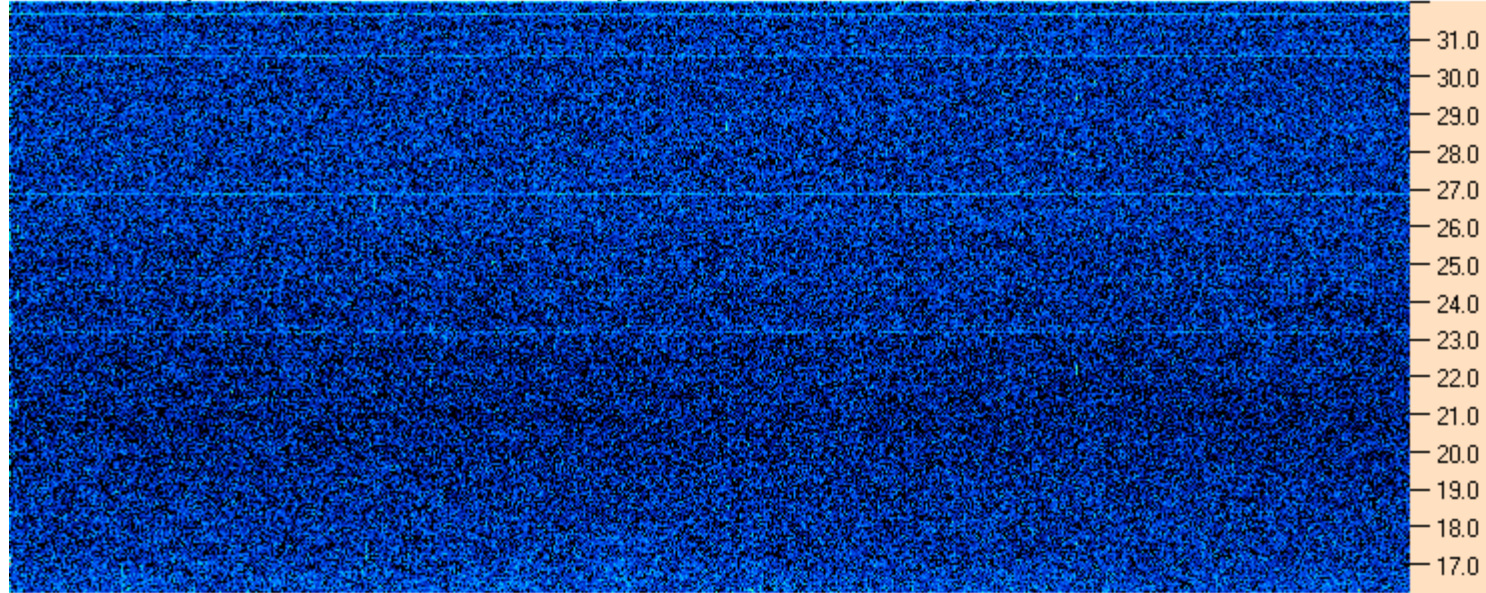


04:55:00 05:05:43 05:16:26 05:27:09 05:37:52 05:48:34 05:59:17 06:10:00

AJ4CO Observatory - 10 Feb 2015 - DPS 30 kHz IF on TFD Array in CP Mode - LCP Correction Array 2014 12 18B.csv Offset 2050 Gain 5.0



AJ4CO Observatory - 10 Feb 2015 - DPS 30 kHz IF on TFD Array in CP Mode - RCP Correction Array 2014 12 18B.csv Offset 2050 Gain 5.0



05:36:40 05:38:01 05:39:21 05:40:42 05:42:03 05:43:24 05:44:45 05:46:06

AJ4CO Observatory - 10 Feb 2015 - DPS 30 kHz IF on TFD Array in CP Mode - LCP Correction Array 2014 12 18B.csv Offset 2050 Gain 5.0

