

Subject: [radiojove-data] 06 Feb 2015 non-Io-B

From: Dave Typinski <davetyp@typnet.net>

Date: 02/08/2015 01:28

To: RadioJove-Data <radiojove-data@lists.nasa.gov>

Here's some weak non-Io-B from Friday morning.

RCP dominant L bursting from 16 to 23 MHz. No modulation lanes visible.

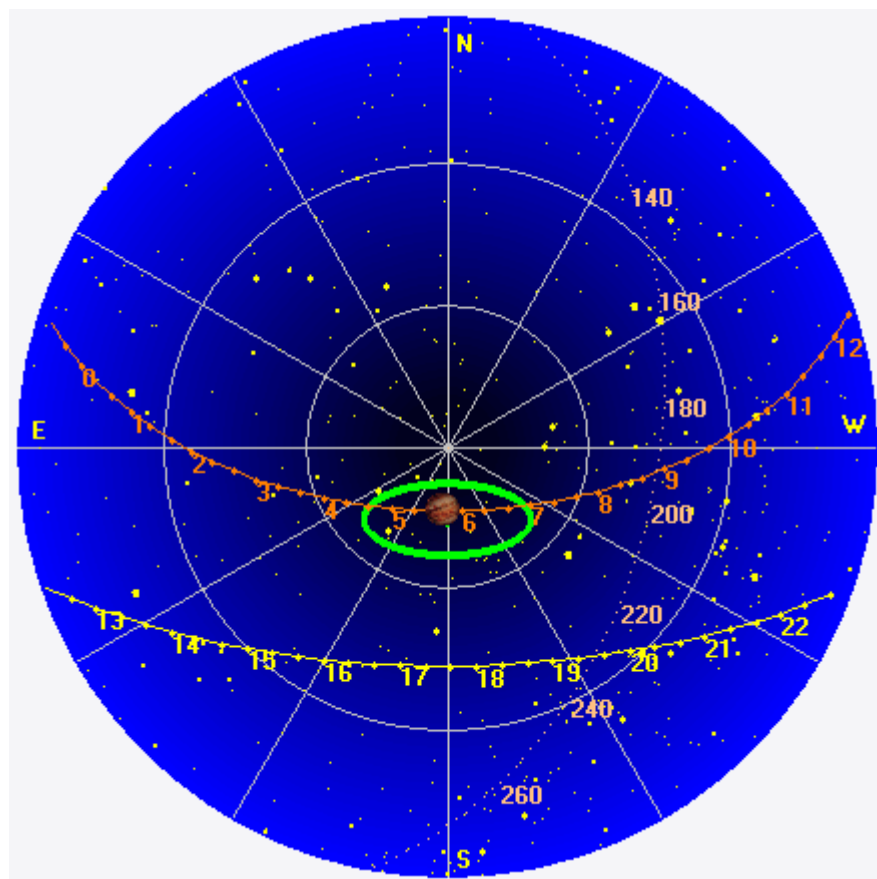
Jupiter was -12° to $+11^\circ$ off axis.

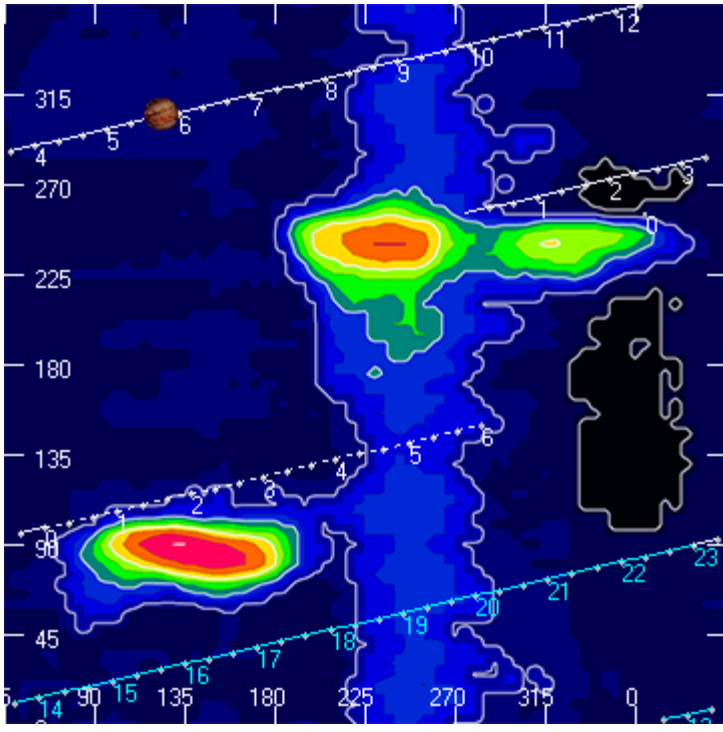
Jupiter was 179° from the Sun -- OPPOSITION. Why this isn't 180° is left as an exercise for the reader. Hint: space has three dimensions.

--

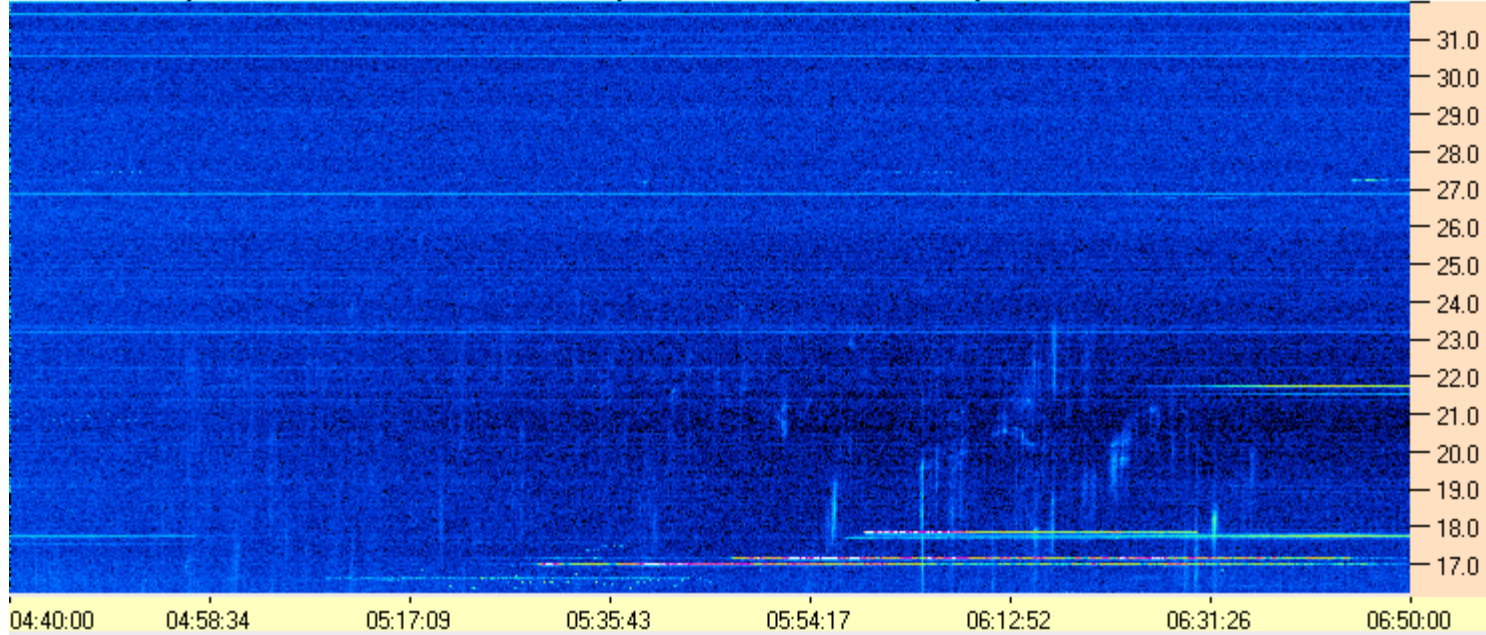
Dave

AJ4CO Observatory 06 Feb 2015, log entry 315

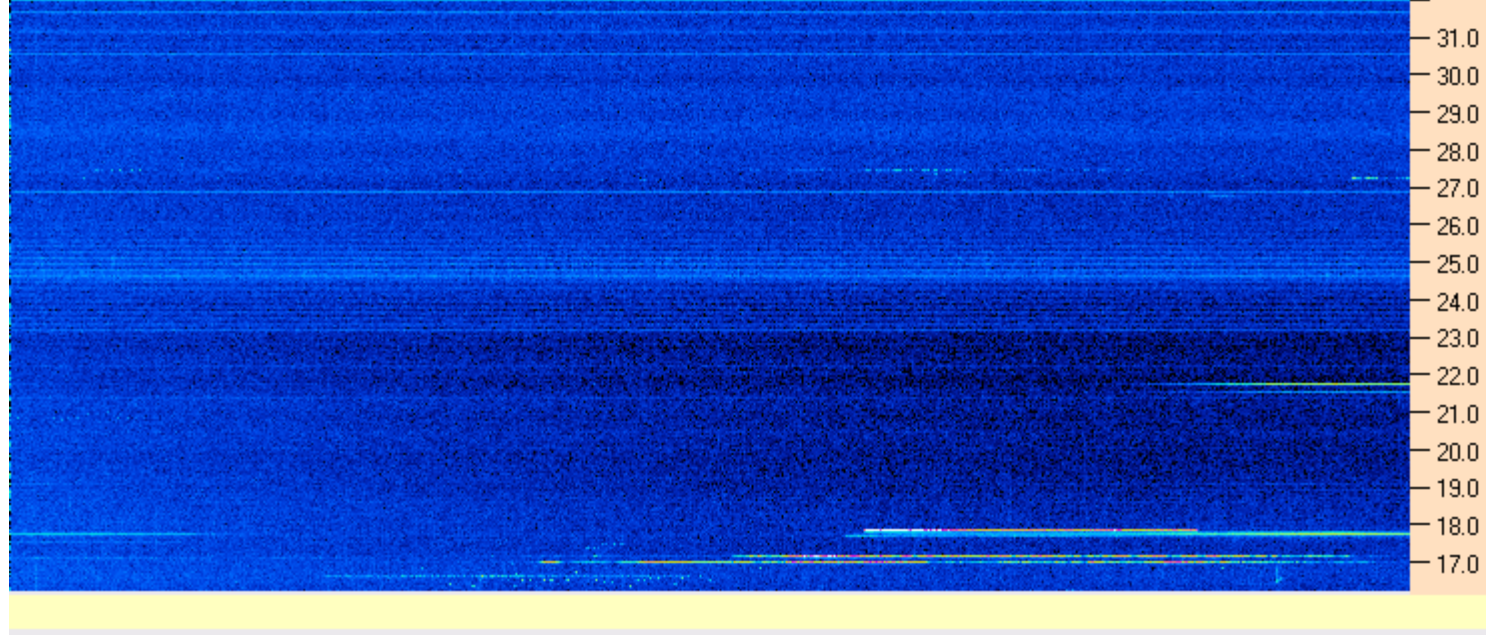




AJ4CO Observatory - 06 Feb 2015 - DPS 30 kHz IF on TFD Array in CP Mode - RCP Correction Array 2014 12 18B.csv Offset 2050 Gain 5.0



AJ4CO Observatory - 06 Feb 2015 - DPS 30 kHz IF on TFD Array in CP Mode - LCP Correction Array 2014 12 18B.csv Offset 2050 Gain 5.0



02/06/2015 by AJ4CO RSP in High Springs, FL

