

Subject: [radiojove-data] 04 Feb 2015 non-Io-A

From: Dave Typinski <davetyp@typnet.net>

Date: 02/05/2015 21:42

To: RadioJove-Data <radiojove-data@lists.nasa.gov>

Adding to Tom's nice report, here's some weak non-Io-A from Wednesday morning.

RCP dominant L bursting from 16 to 23 MHz. No modulation lanes visible.

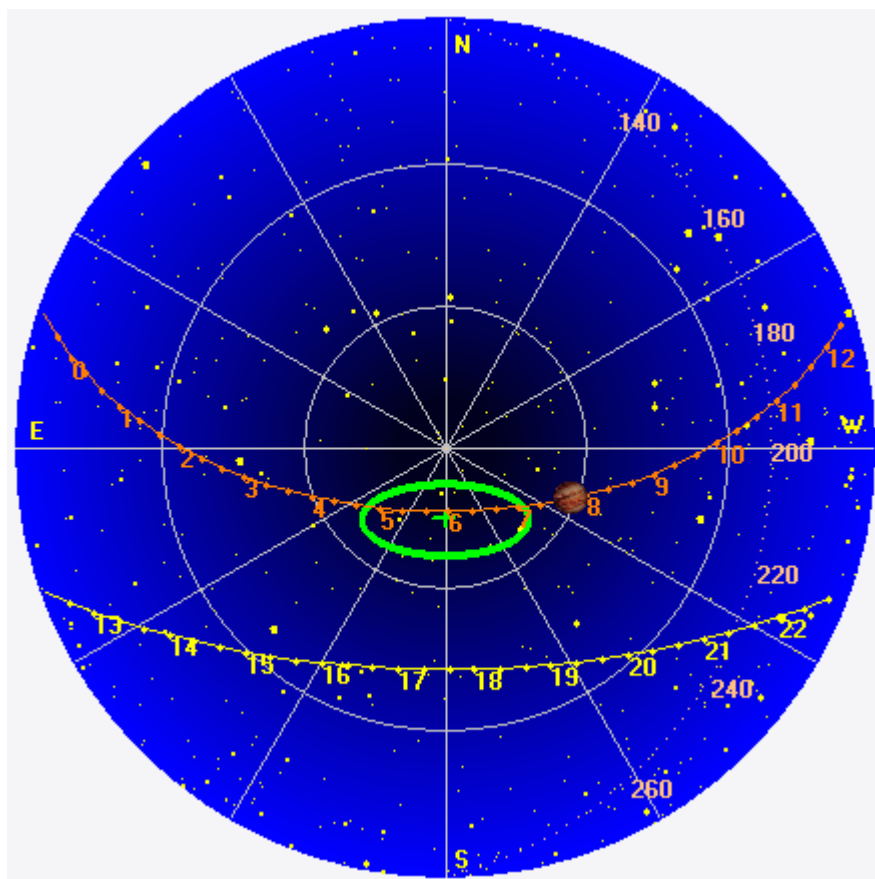
Jupiter was +21° to +32° off axis.

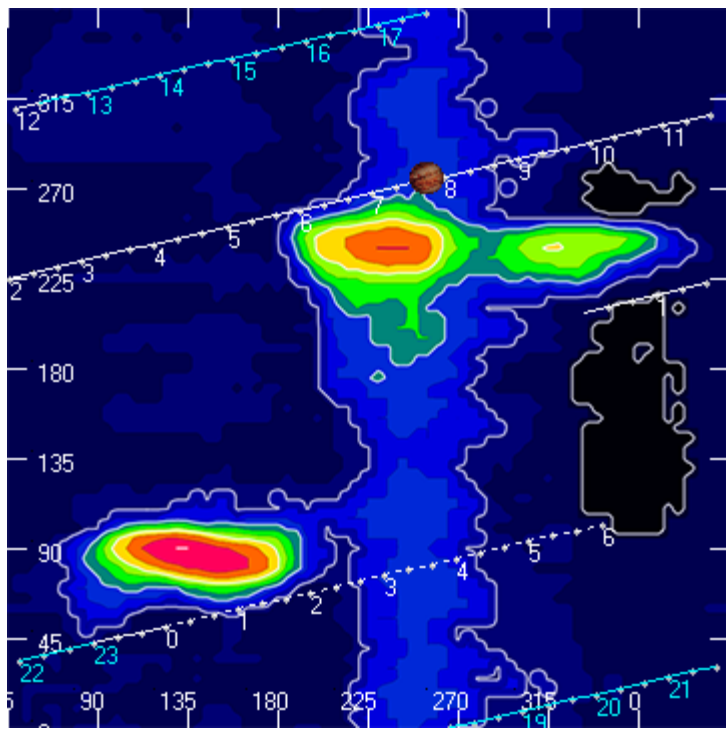
Jupiter was leading the Sun by 177°.

--

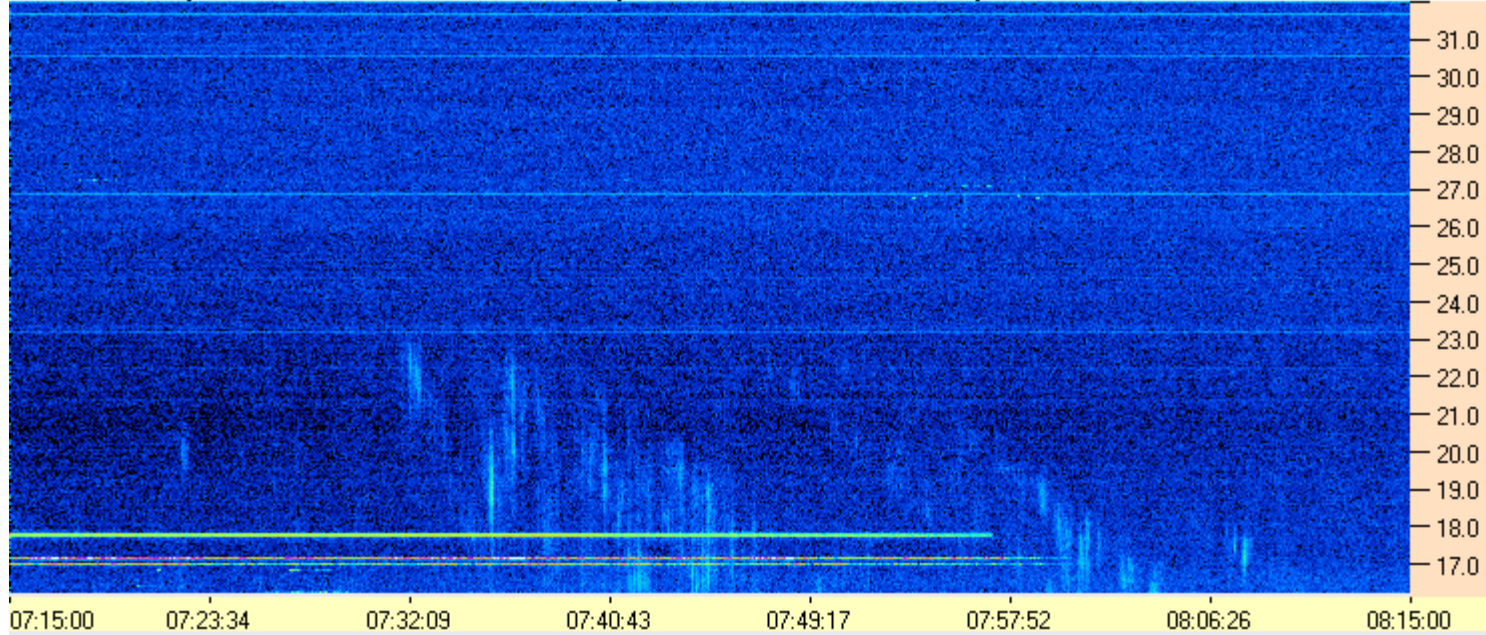
Dave

AJ4CO Observatory 04 Feb 2015, log entry 314





AJ4CO Observatory - 04 Feb 2015 - DPS 30 kHz IF on TFD Array in CP Mode - RCP Correction Array 2014 12 18B.csv Offset 2050 Gain 5.0



AJ4CO Observatory - 04 Feb 2015 - DPS 30 kHz IF on TFD Array in CP Mode - LCP Correction Array 2014 12 18B.csv Offset 2050 Gain 5.0

