

Subject: [radiojove-data] 28 Jan 2015 non-Io-A, non-Io-C, and Virgo A scintillation

From: Dave Typinski <davetyp@typnet.net>

Date: 01/29/2015 22:34

To: RadioJove-Data <radiojove-data@lists.nasa.gov>

Adding to Jim's nice report, here's some non-Io-A, non-Io-C, and a Virgo A bonus from Wednesday morning.

Non-Io-A

RCP dominant L bursting from 0627 to 0653 at 16 to 21 MHz. No modulation lanes visible. Jupiter was -1° to $+6^\circ$ off axis.

Non-Io-C

RCP dominant L bursting from 0824 to 0915 at 16 to 18 MHz. No modulation lanes visible. Jupiter was $+28^\circ$ to $+40^\circ$ off axis.

Jupiter was leading the Sun by 161° .

Virgo A

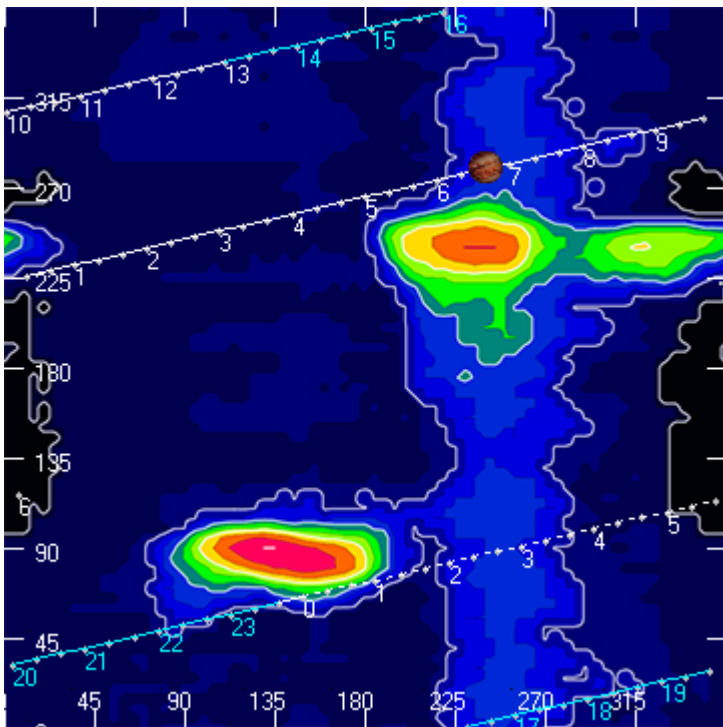
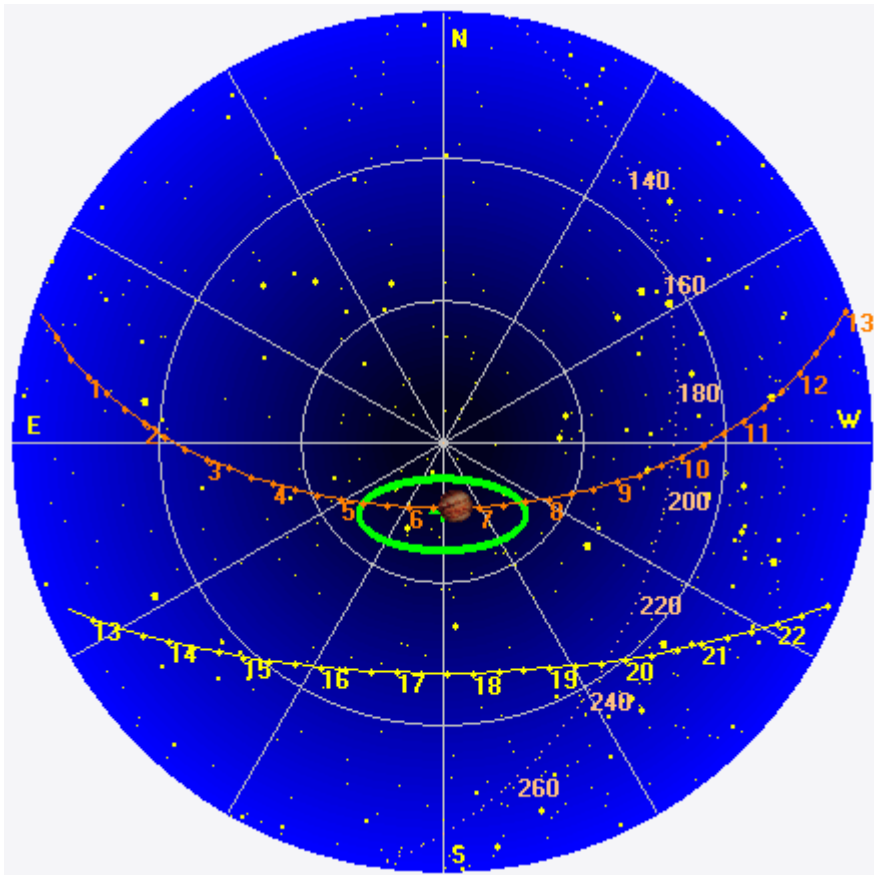
Scintillation visible from 0800 to 1045 UTC. Vir A transited at 0932 UTC, local sunrise at 1222 UTC. This is the same phenomenon mentioned in the Jan 2015 issue of the Jove bulletin, but as expected, much weaker for Vir A.

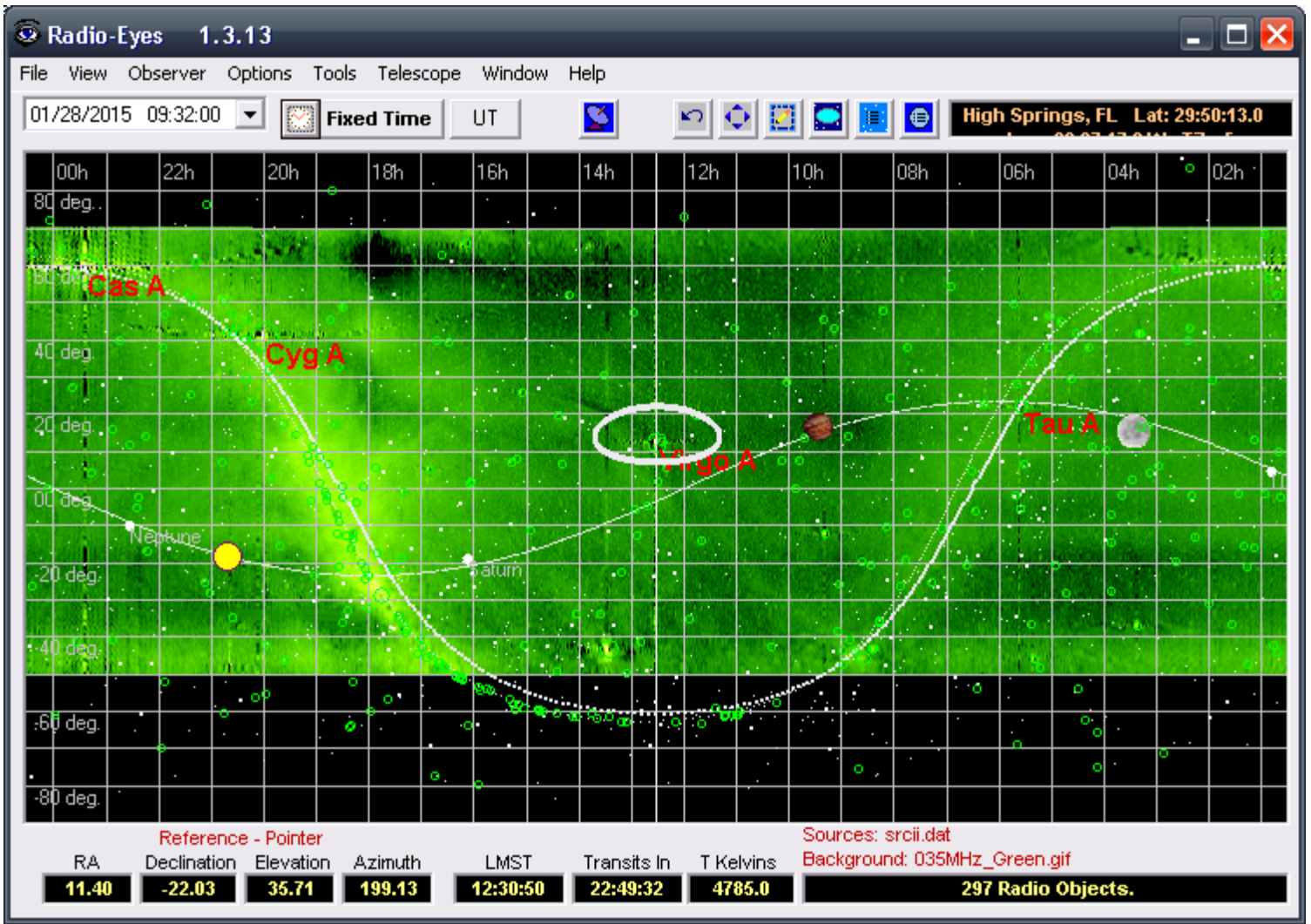
<http://radiojove.gsfc.nasa.gov/library/newsletters/2015Jan/index.html#2>

--

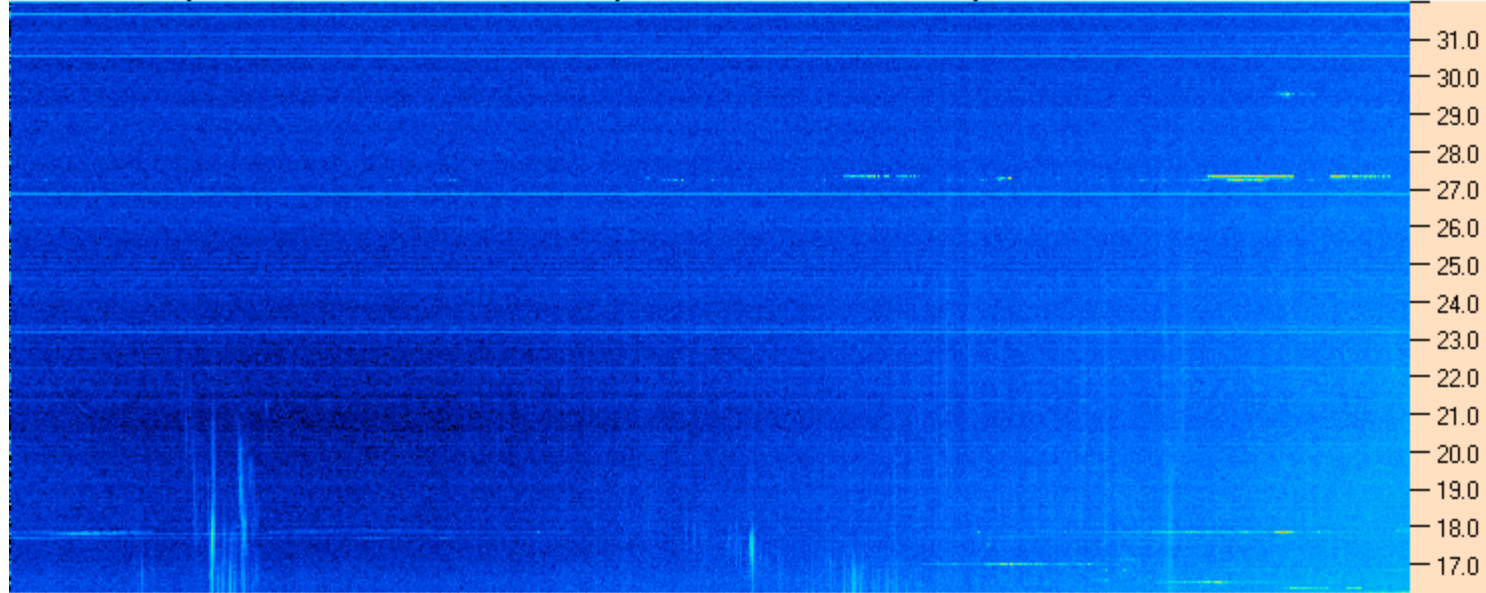
Dave

AJ4CO Observatory 28 Jan 2015, log entry 301(nA), 302(nC)





AJ4CO Observatory - 28 Jan 2015 - DPS 30 kHz IF on TFD Array in CP Mode - RCP Correction Array 2014 12 18B.csv Offset 2050 Gain 5.0



06:00:00 06:42:51 07:25:43 08:08:34 08:51:26 09:34:17 10:17:09 11:00:00

AJ4CO Observatory - 28 Jan 2015 - DPS 30 kHz IF on TFD Array in CP Mode - LCP Correction Array 2014 12 18B.csv Offset 2050 Gain 5.0

