

**Subject:** [radiojove-data] 27 Jan 2015 non-Io-C

**From:** Dave Typinski <davetyp@typnet.net>

**Date:** 01/28/2015 23:16

**To:** RadioJove-Data <radiojove-data@lists.nasa.gov>

Adding to Tom & Jim's nice reports, here's some non-Io-C from Tuesday morning.

RCP dominant L bursting from 16 to 24 MHz. No modulation lanes visible.

Jupiter was  $-30^\circ$  to  $-14^\circ$  off axis.

Jupiter was leading the Sun by  $168^\circ$ .

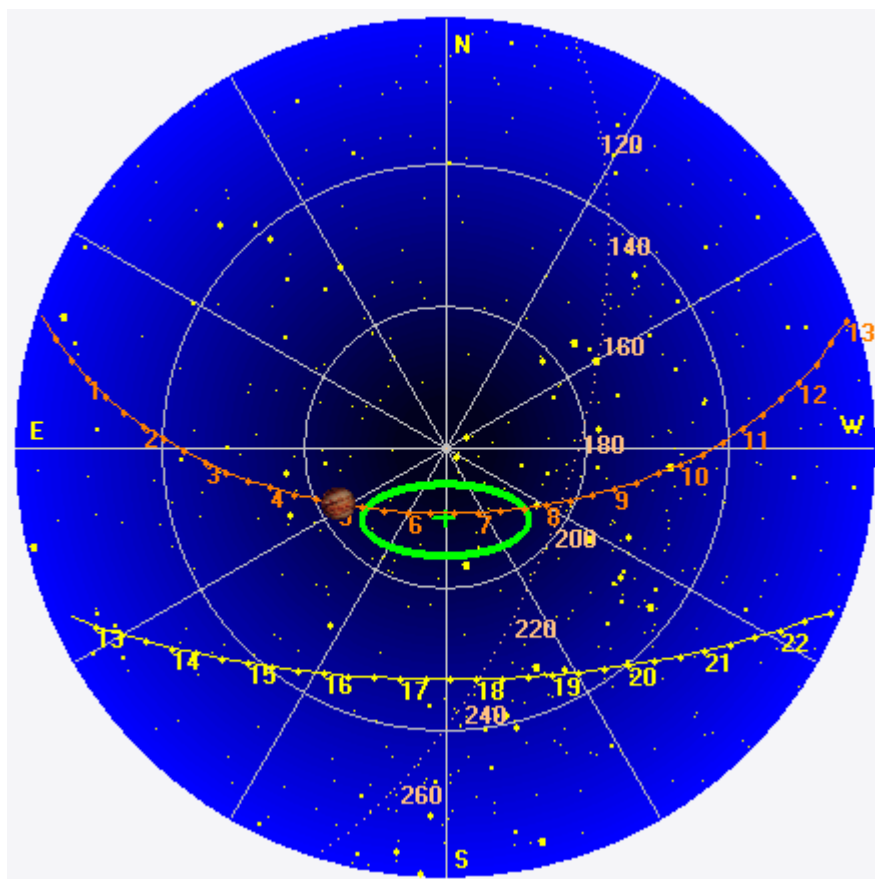
--

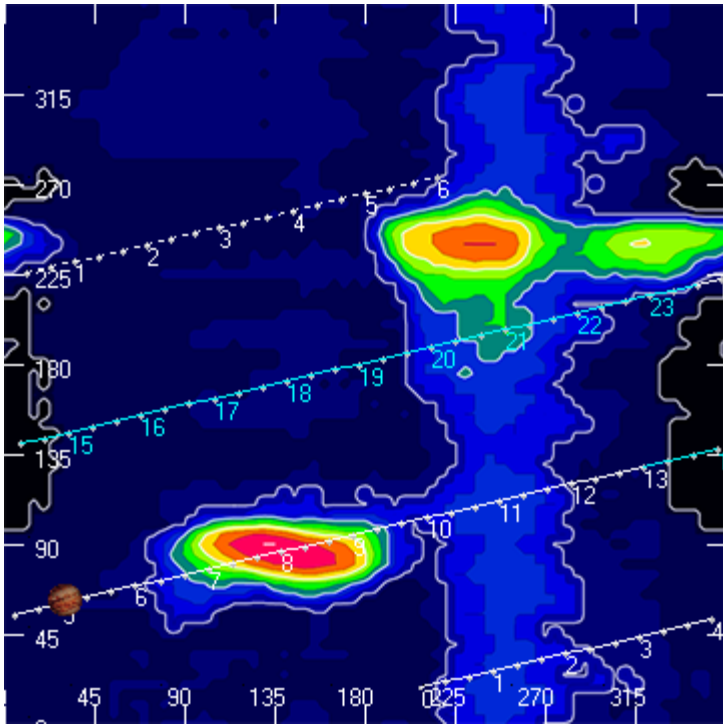
Dave

---

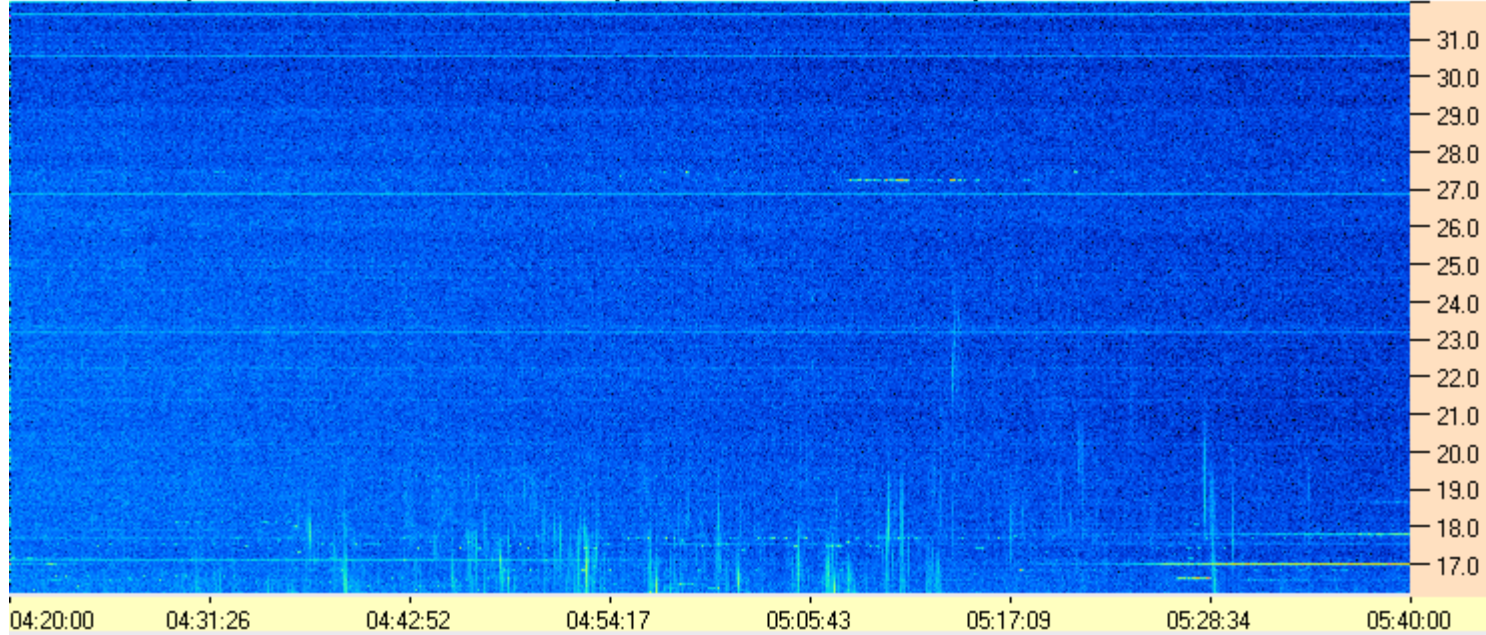
**AJ4CO Observatory 27 Jan 2015, log entry 296**

---





AJ4CO Observatory - 27 Jan 2015 - DPS 30 kHz IF on TFD Array in CP Mode - RCP Correction Array 2014 12 18B.csv Offset 2050 Gain 5.0



AJ4CO Observatory - 27 Jan 2015 - DPS 30 kHz IF on TFD Array in CP Mode - LCP Correction Array 2014 12 18B.csv Offset 2050 Gain 5.0

