

Subject: [radiojove-data] 23 Jan 2015 non-Io-B

From: Dave Typinski <davetyp@typnet.net>

Date: 01/27/2015 23:19

To: RadioJove-Data <radiojove-data@lists.nasa.gov>

Here's some non-Io-B from Friday morning.

RCP dominant L bursting from 16 to 25 MHz. No modulation lanes visible.

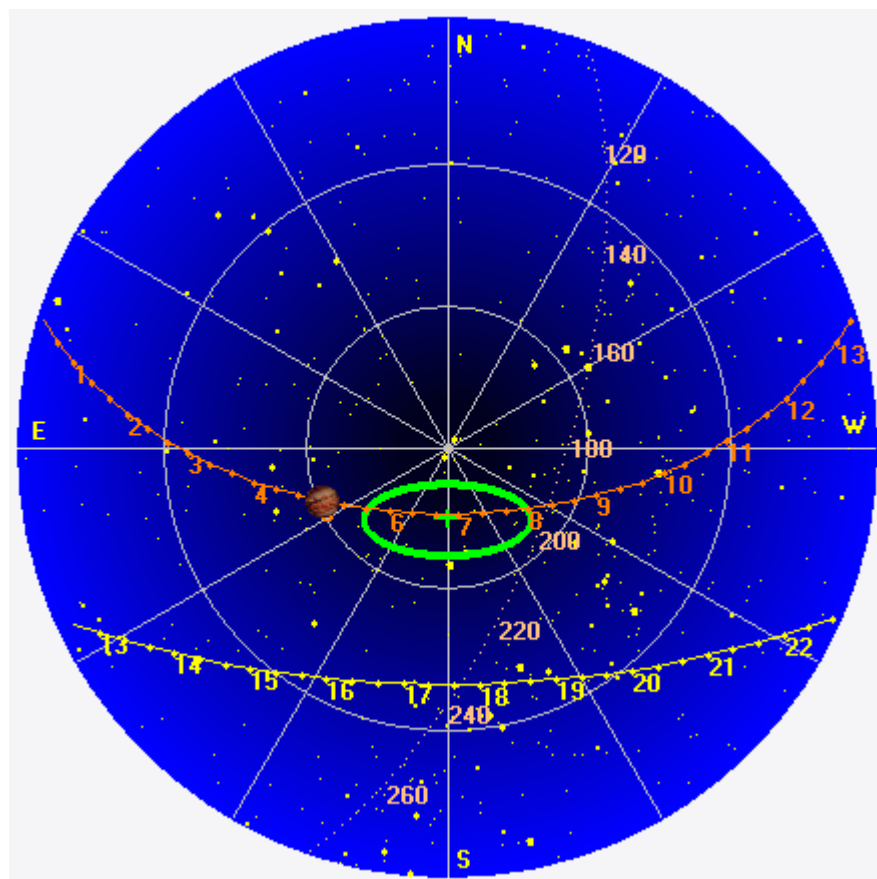
Jupiter was -34° to -17° off axis.

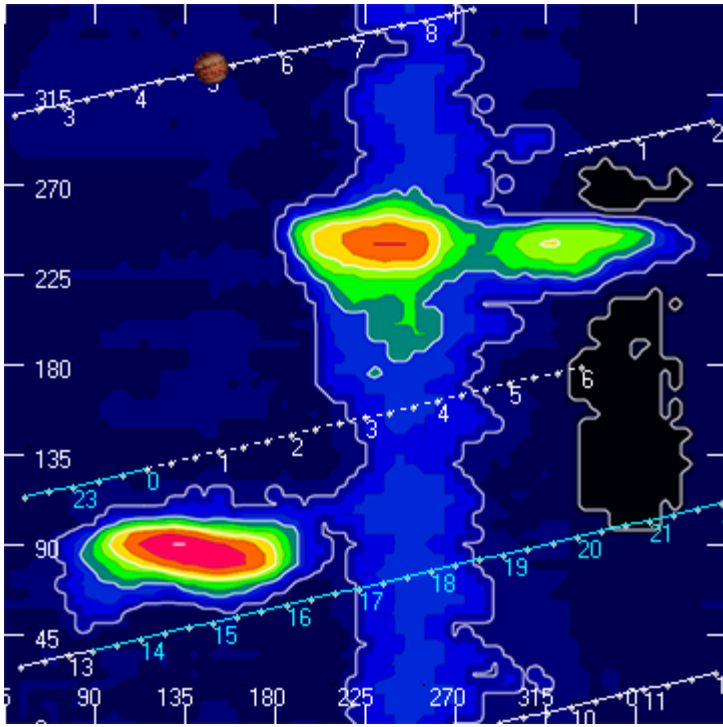
Jupiter was leading the Sun by 163° .

--

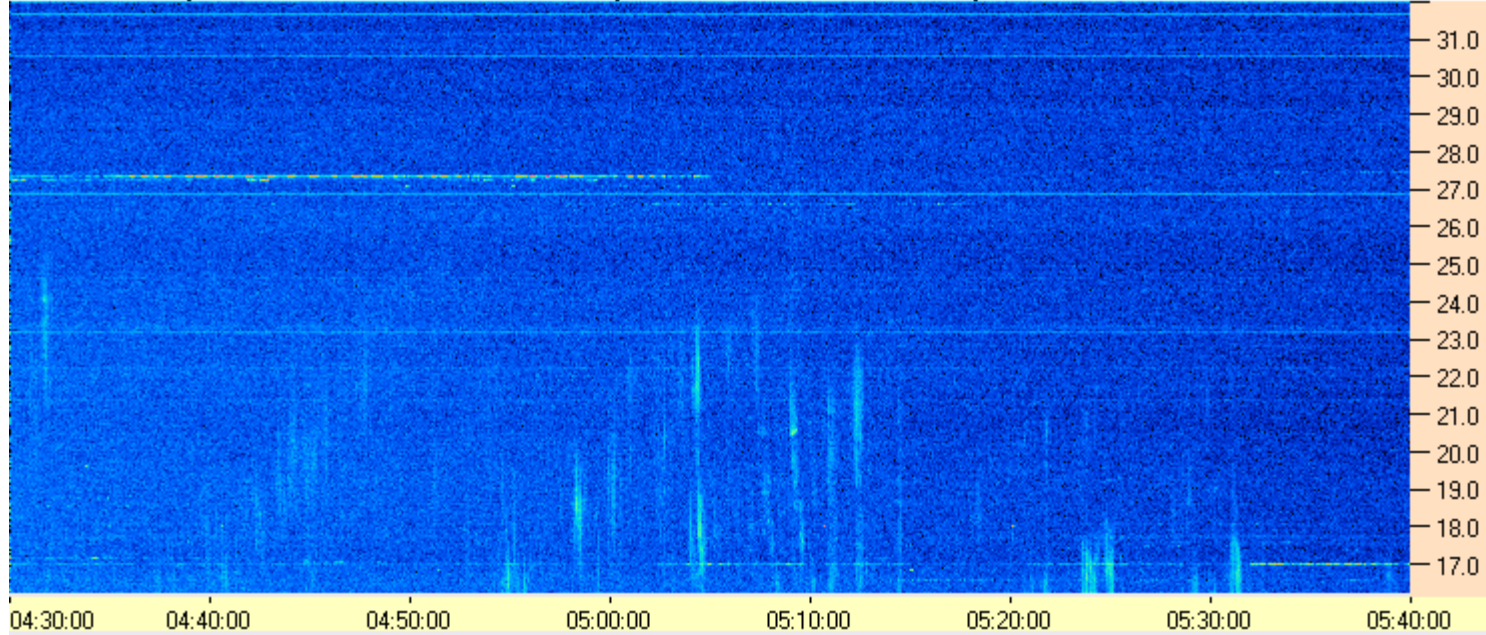
Dave

AJ4CO Observatory 23 Jan 2015, log entry 290

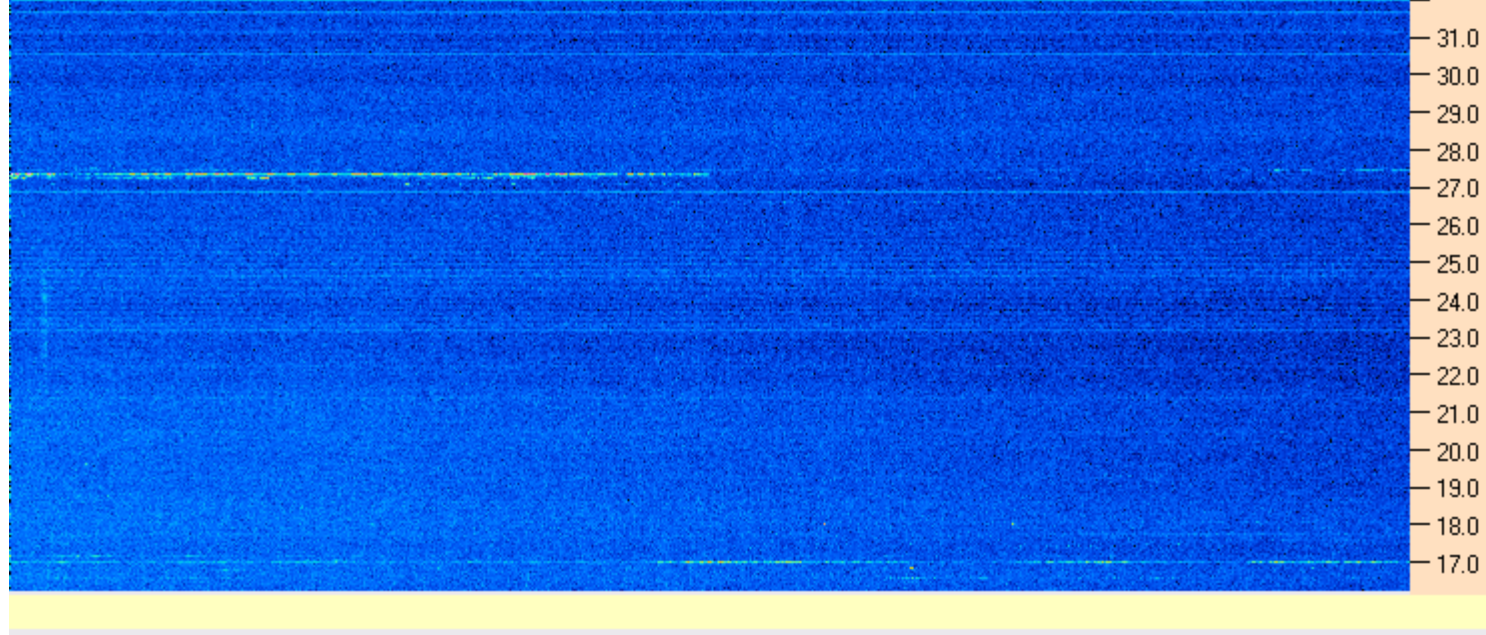




AJ4CO Observatory - 23 Jan 2015 - DPS 30 kHz IF on TFD Array in CP Mode - RCP Correction Array 2014 12 18B.csv Offset 2050 Gain 5.0



AJ4CO Observatory - 23 Jan 2015 - DPS 30 kHz IF on TFD Array in CP Mode - LCP Correction Array 2014 12 18B.csv Offset 2050 Gain 5.0



01/23/2015 by AJ4CO RSP in High Springs, FL

