

Subject: [radiojove-data] 23 Jan 2015 non-Io-A

From: Dave Typinski <davetyp@typnet.net>

Date: 01/27/2015 23:19

To: RadioJove-Data <radiojove-data@lists.nasa.gov>

Adding to Jim's nice report, here's more non-Io-A from Friday morning.

RCP dominant L bursting from 16 to 22 MHz. No modulation lanes visible.

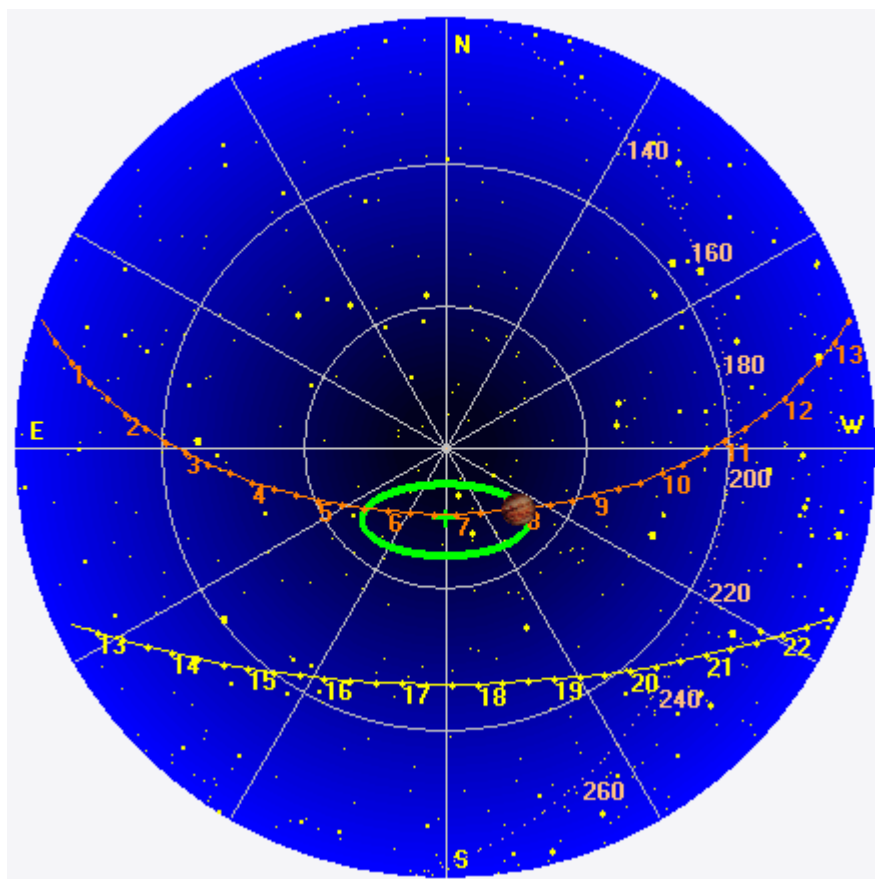
Jupiter was +4° to +26° off axis.

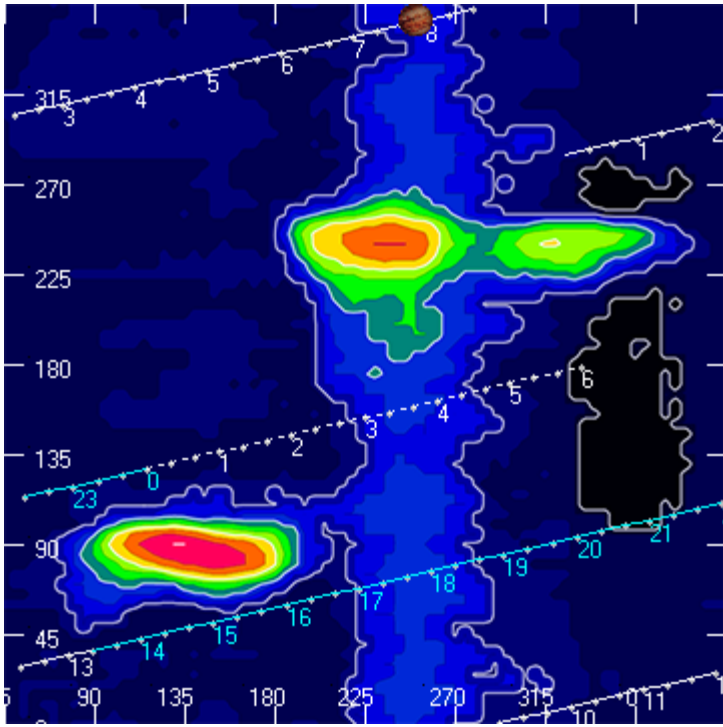
Jupiter was leading the Sun by 163°.

--

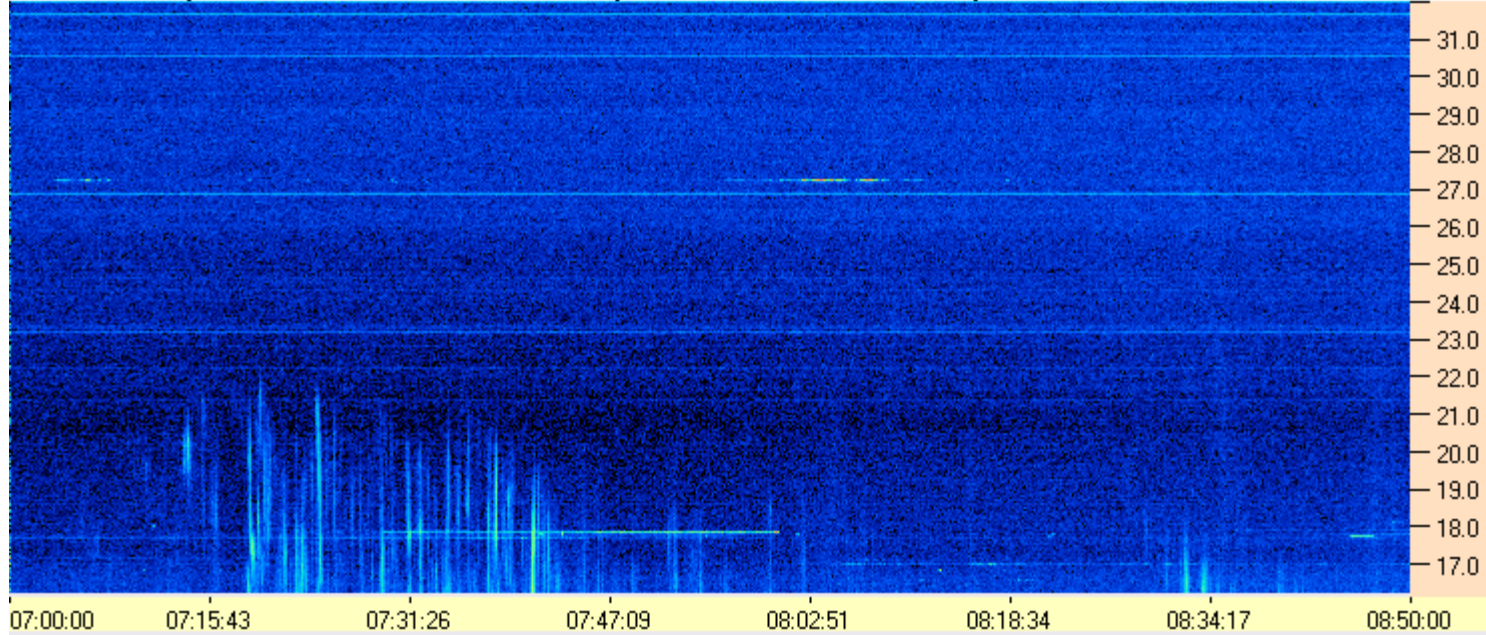
Dave

AJ4CO Observatory 23 Jan 2015, log entry 291





AJ4CO Observatory - 23 Jan 2015 - DPS 30 kHz IF on TFD Array in CP Mode - RCP Correction Array 2014 12 18B.csv Offset 2050 Gain 5.0



AJ4CO Observatory - 23 Jan 2015 - DPS 30 kHz IF on TFD Array in CP Mode - LCP Correction Array 2014 12 18B.csv Offset 2050 Gain 5.0

