

**Subject:** [radiojove-data] 17 Jan 2015 non-Io-B

**From:** Dave Typinski <davetyp@typnet.net>

**Date:** 01/17/2015 23:46

**To:** RadioJove-Data <radiojove-data@lists.nasa.gov>

Adding to Tom & Jim's nice reports, here's some weak non-Io-B from Saturday morning.

Did not see anything for the non-Io-A earlier or the Io-A later.

RCP dominant L bursting from 16 to 21 MHz. No modulation lanes visible.

Jupiter was +29° to +37° off axis.

Jupiter was leading the Sun by 157°.

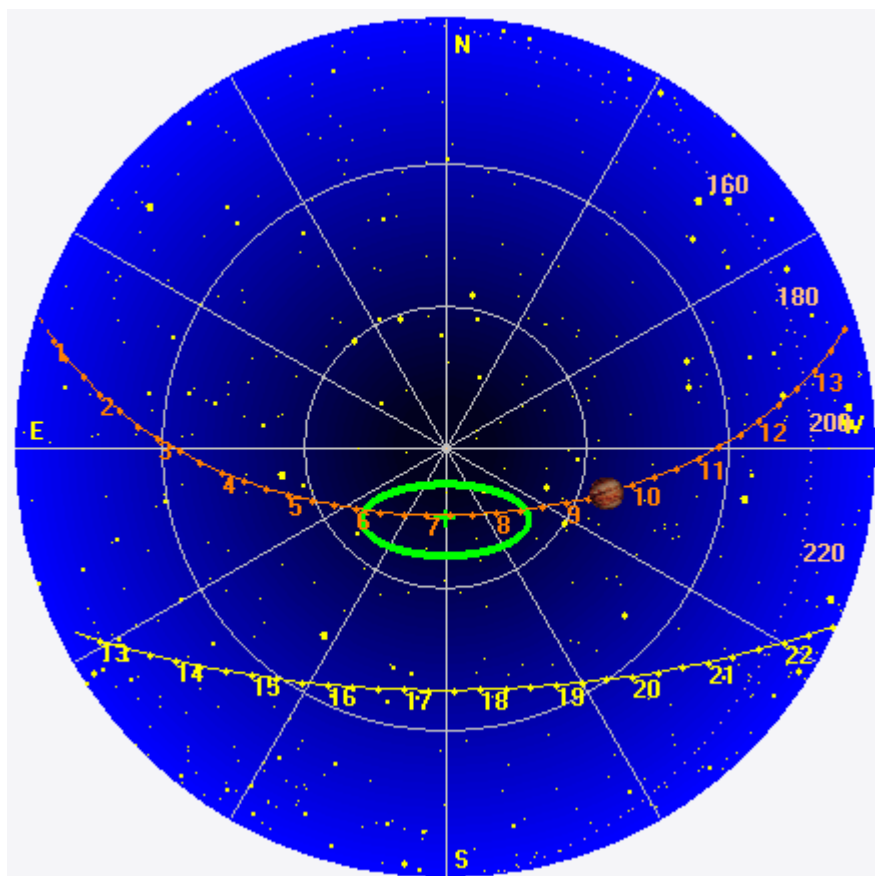
--

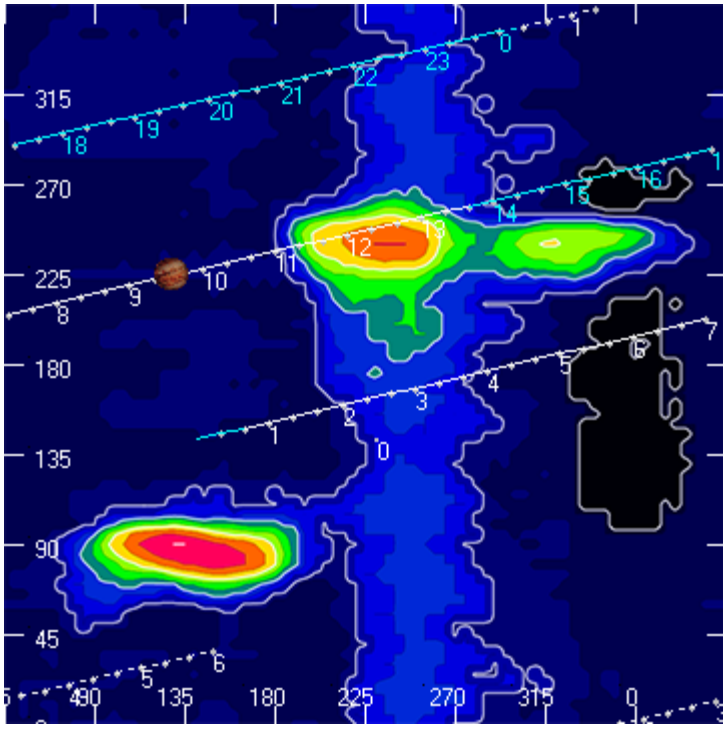
Dave

---

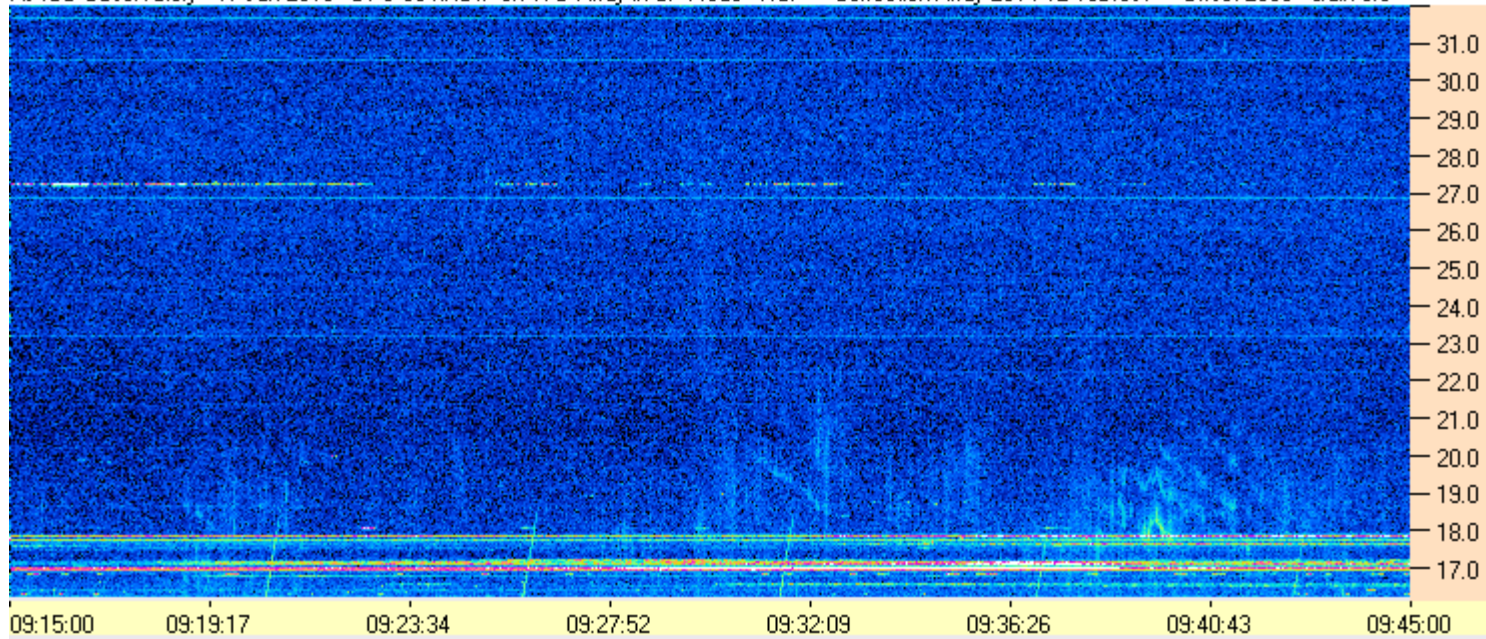
**AJ4CO Observatory 17 Jan 2015, log entry 281**

---





AJ4CO Observatory 17 Jan 2015 DPS 30 kHz IF on TFD Array in CP Mode - RCP Correction Array 2014 12 18B.csv Offset 2050 Gain 5.0



AJ4CO Observatory - 17 Jan 2015 - DPS 30 kHz IF on TFD Array in CP Mode - LCP Correction Array 2014 12 18B.csv Offset 2050 Gain 5.0

