

Subject: [radiojove-data] 06 Jan 2015 Io-D

From: Dave Typinski <davetyp@typnet.net>

Date: 01/07/2015 20:40

To: RadioJove-Data <radiojove-data@lists.nasa.gov>

Adding to Jim's nice report, here's some Io-D from Tuesday morning.

LCP dominant L bursting from 16 to 18 MHz. No modulation lanes visible.

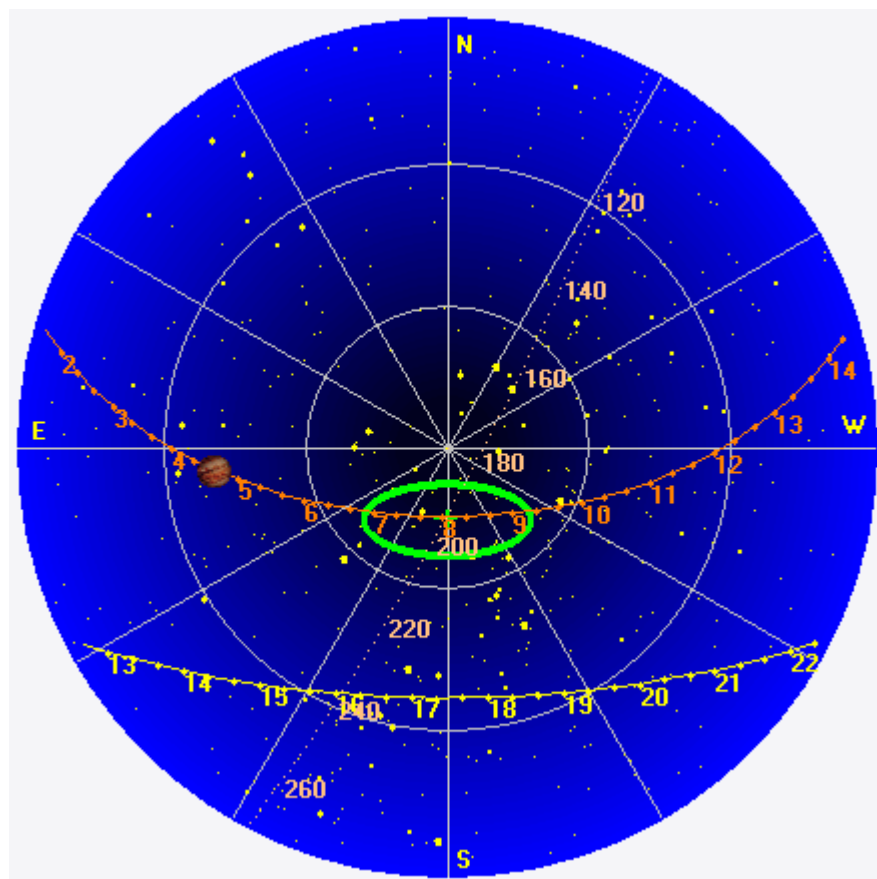
Jupiter was -51° to -45° off axis.

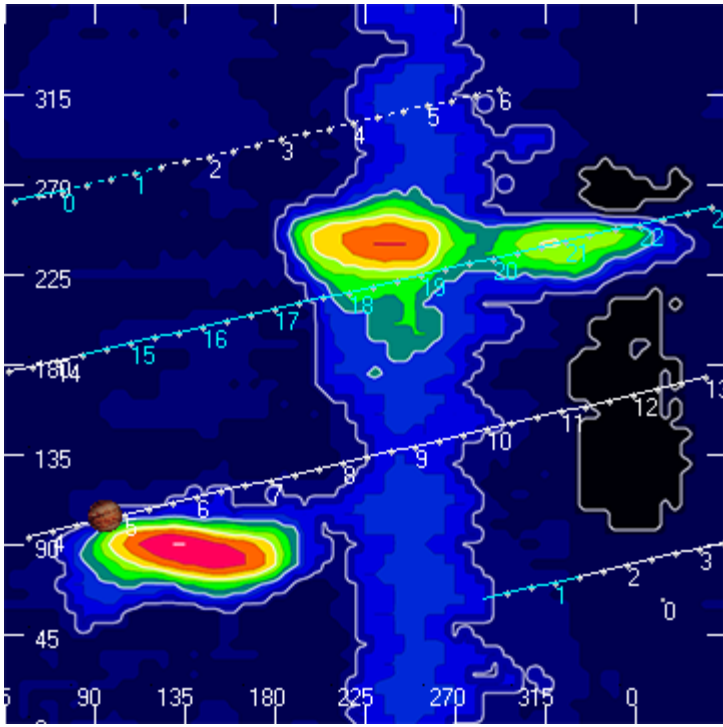
Jupiter was leading the Sun by 144° .

--

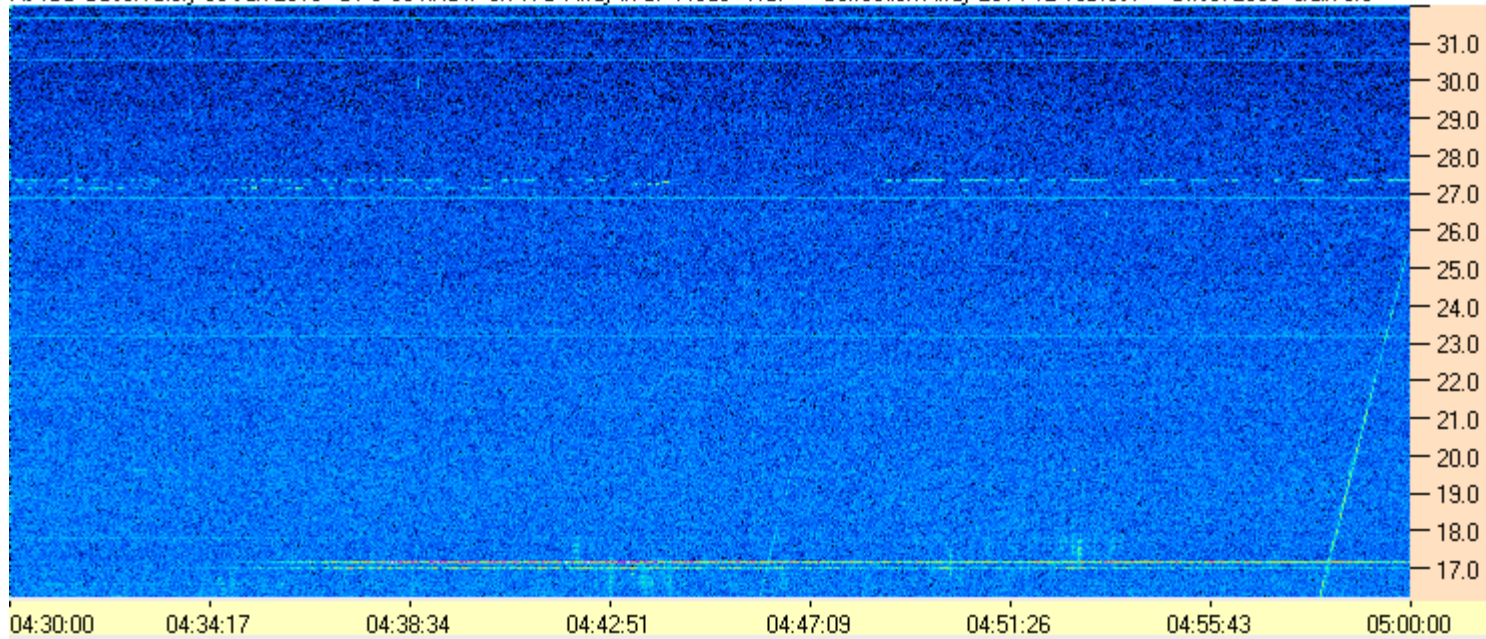
Dave

AJ4CO Observatory 06 Jan 2015, log entry 268





AJ4CO Observatory 06 Jan 2015 - DPS 30 kHz IF on TFD Array in CP Mode - RCP Correction Array 2014 12 18B.csv Offset 2065 Gain 5.0



AJ4CO Observatory 06 Jan 2015 - DPS 30 kHz IF on TFD Array in CP Mode - LCP Correction Array 2014 12 18B.csv Offset 2065 Gain 5.0

