

Subject: [radiojove-data] 04 Jan 2015 non-Io-C

From: Dave Typinski <davetyp@typnet.net>

Date: 01/05/2015 00:55

To: RadioJove-Data <radiojove-data@lists.nasa.gov>

Here's some non-Io-C from Sunday morning.

RCP dominant L bursting from 16 to 21 MHz. Could be another vertex late arc in a continuation from the earlier non-Io-A series. No modulation lanes visible -- at least not visible enough to measure.

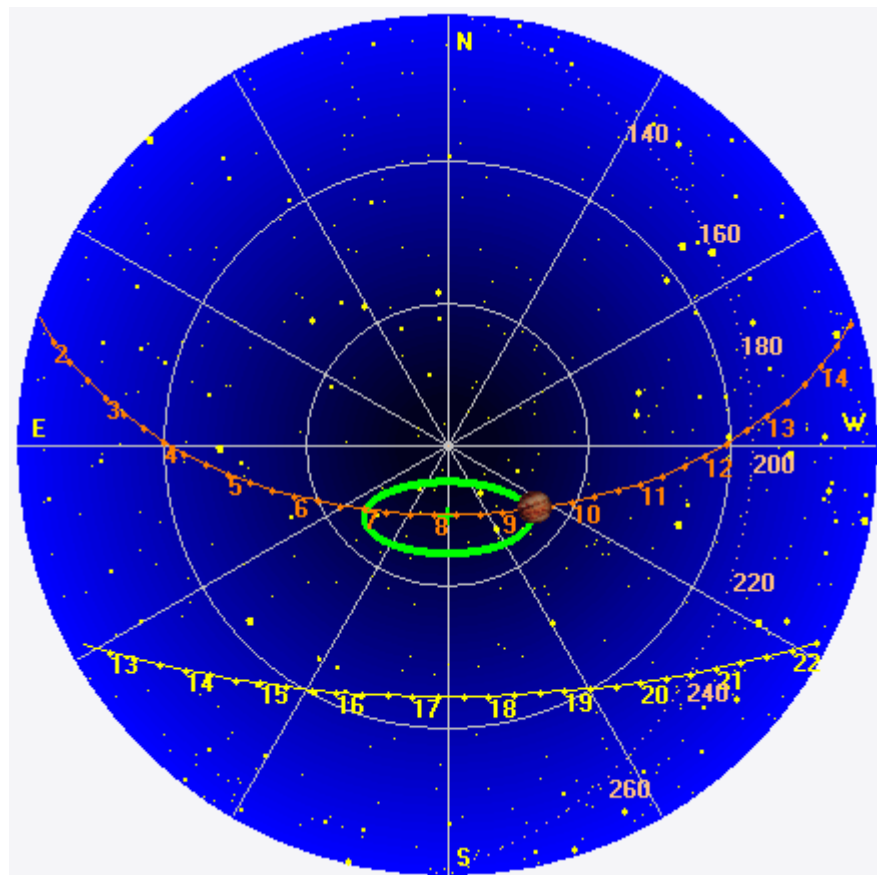
Jupiter was +12° to +24° off axis.

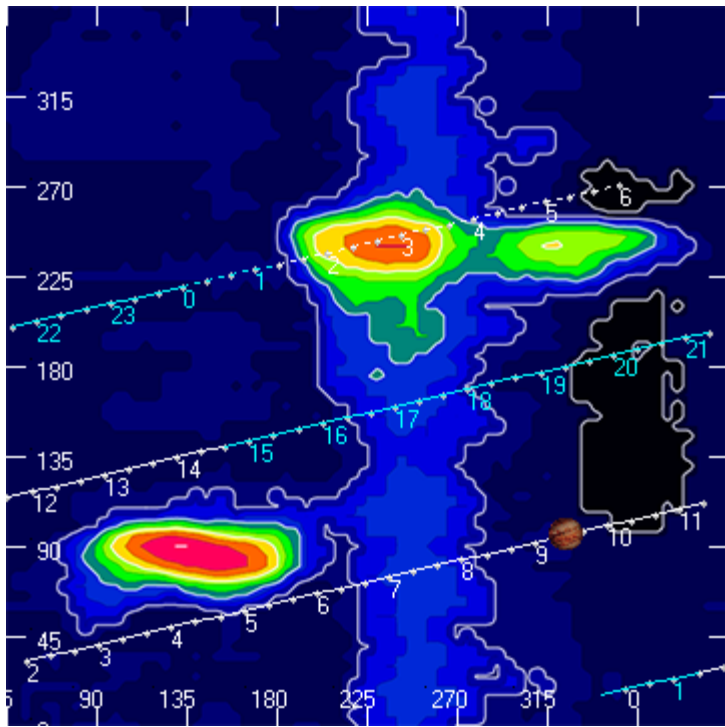
Jupiter was leading the Sun by 142°.

--

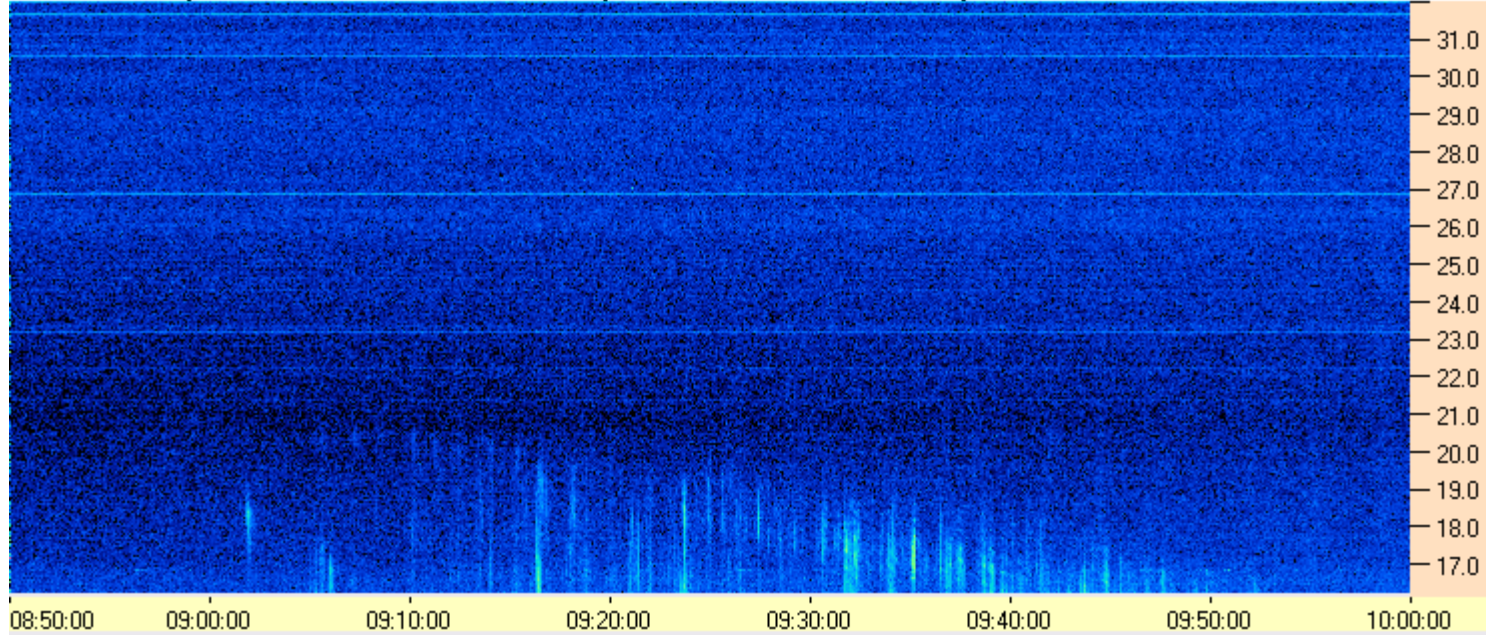
Dave

AJ4CO Observatory 04 Jan 2015, log entry 266

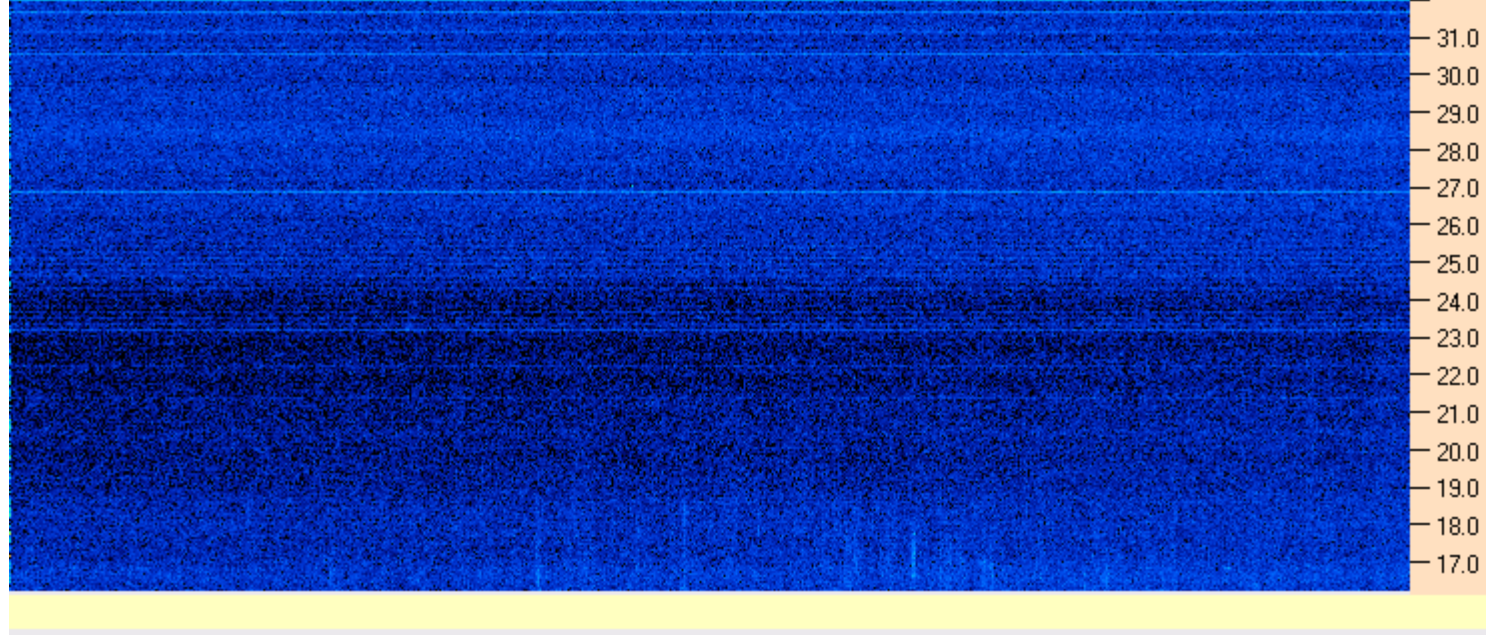




AJ4CO Observatory 04 Jan 2015 - DPS 30 kHz IF on TFD Array in CP Mode - RCP Correction Array 2014 12 18 B.csv Offset 2050 Gain 5.0



AJ4CO Observatory 04 Jan 2015 - DPS 30 kHz IF on TFD Array in CP Mode - LCP Correction Array 2014 12 18 B.csv Offset 2050 Gain 5.0



01/04/2015 by AJ4CO RSP in High Springs, FL

