

Subject: [radiojove-data] 04 Jan 2015 Io-D

From: Dave Typinski <davetyp@typnet.net>

Date: 01/05/2015 00:56

To: RadioJove-Data <radiojove-data@lists.nasa.gov>

Here's some Io-D from Sunday morning.

LCP dominant L bursting from 16 to 18 MHz. No modulation lanes visible.

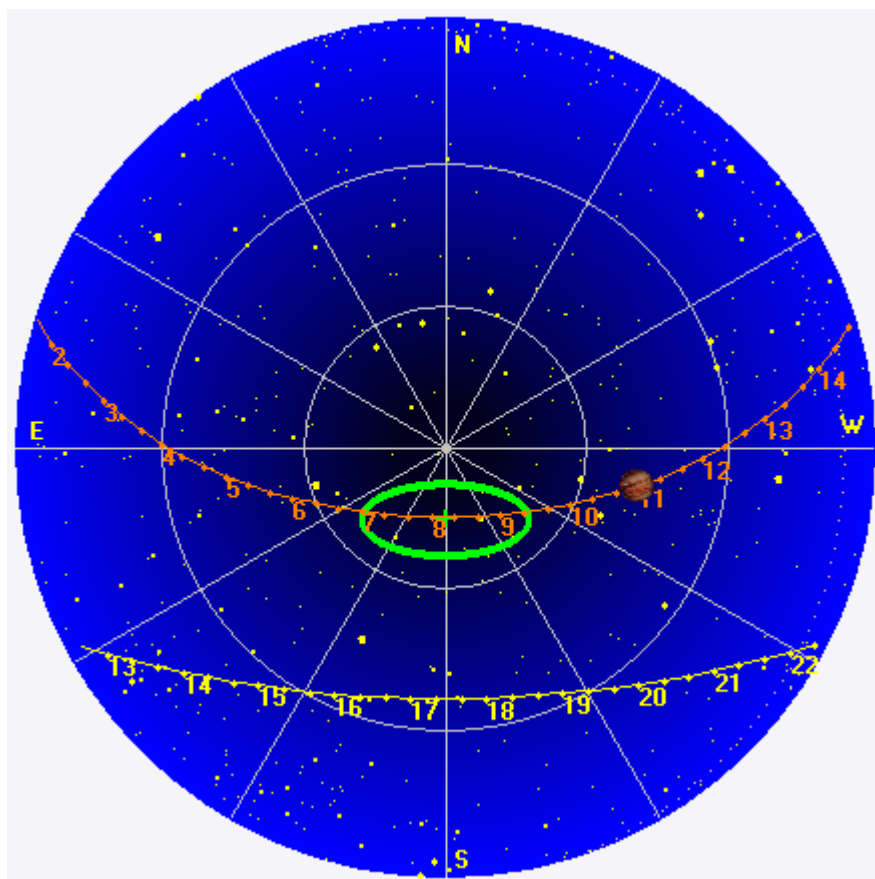
Jupiter was +33° to +46° off axis.

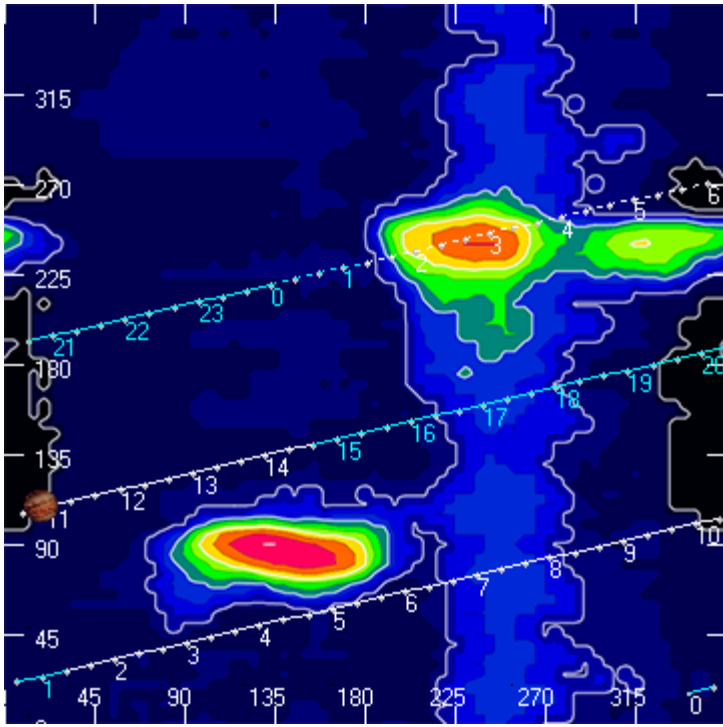
Jupiter was leading the Sun by 142°.

--

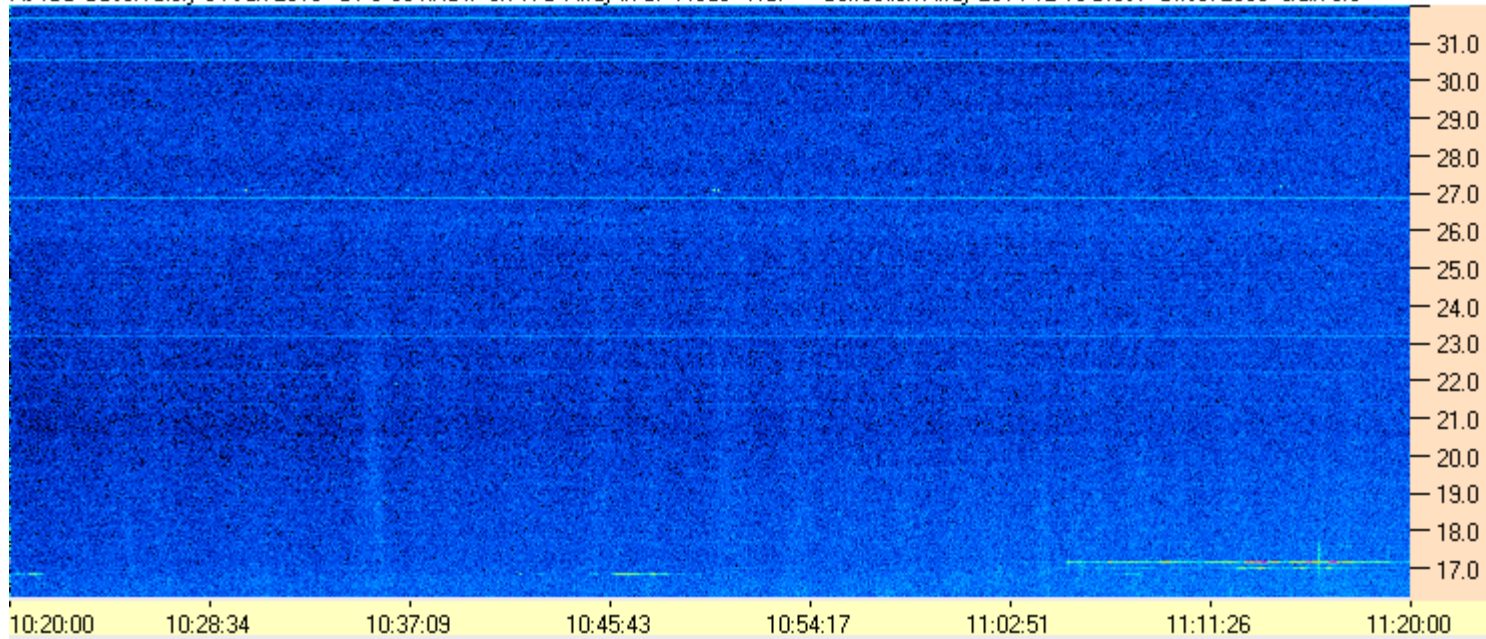
Dave

AJ4CO Observatory 04 Jan 2015, log entry 267





AJ4CO Observatory 04 Jan 2015 - DPS 30 kHz IF on TFD Array in CP Mode - RCP Correction Array 2014 12 18 B.csv Offset 2050 Gain 5.0



AJ4CO Observatory 04 Jan 2015 - DPS 30 kHz IF on TFD Array in CP Mode - LCP Correction Array 2014 12 18 B.csv Offset 2050 Gain 5.0

