

Subject: [radiojove-data] 01 Jan 2014 non-Io-B

From: Dave Typinski <davetyp@typnet.net>

Date: 01/03/2015 00:11

To: RadioJove-Data <radiojove-data@lists.nasa.gov>

Here's some weak, brief non-Io-B from Thursday morning.

RCP dominant L bursting from 16 to 21 MHz. No modulation lanes visible.

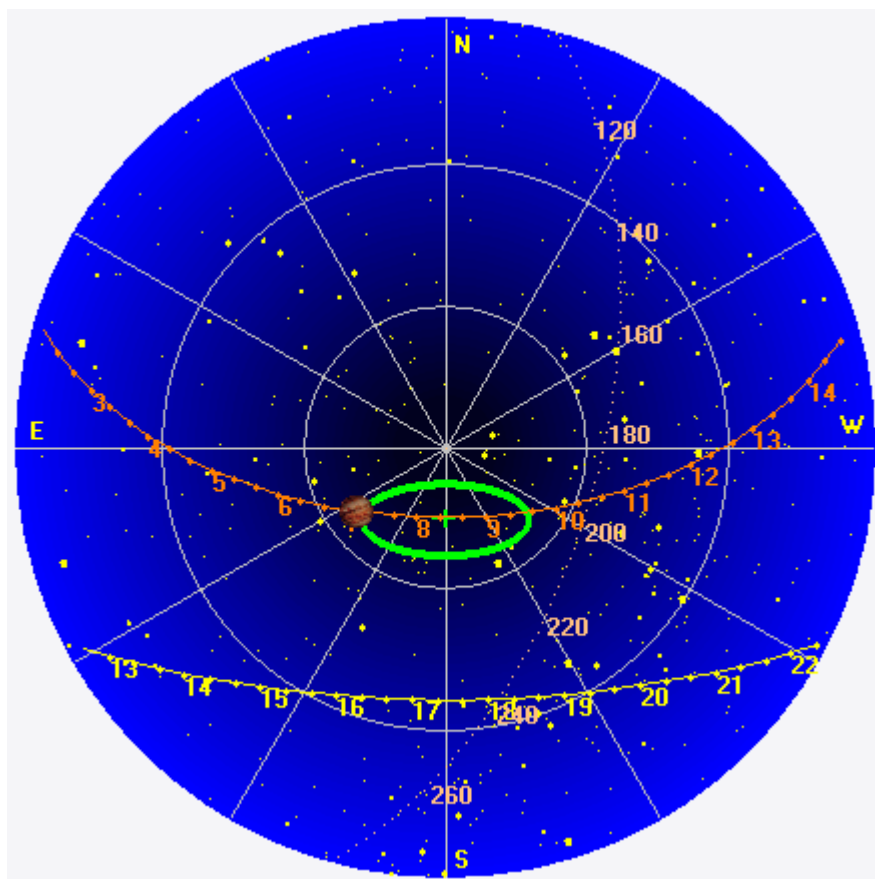
Jupiter was -19° to -18° off axis.

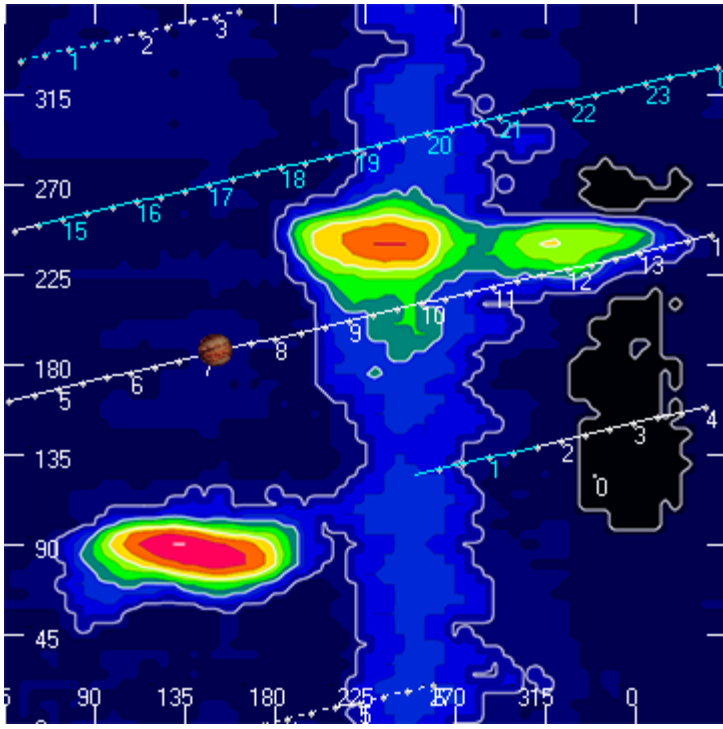
Jupiter was leading the Sun by 139° .

--

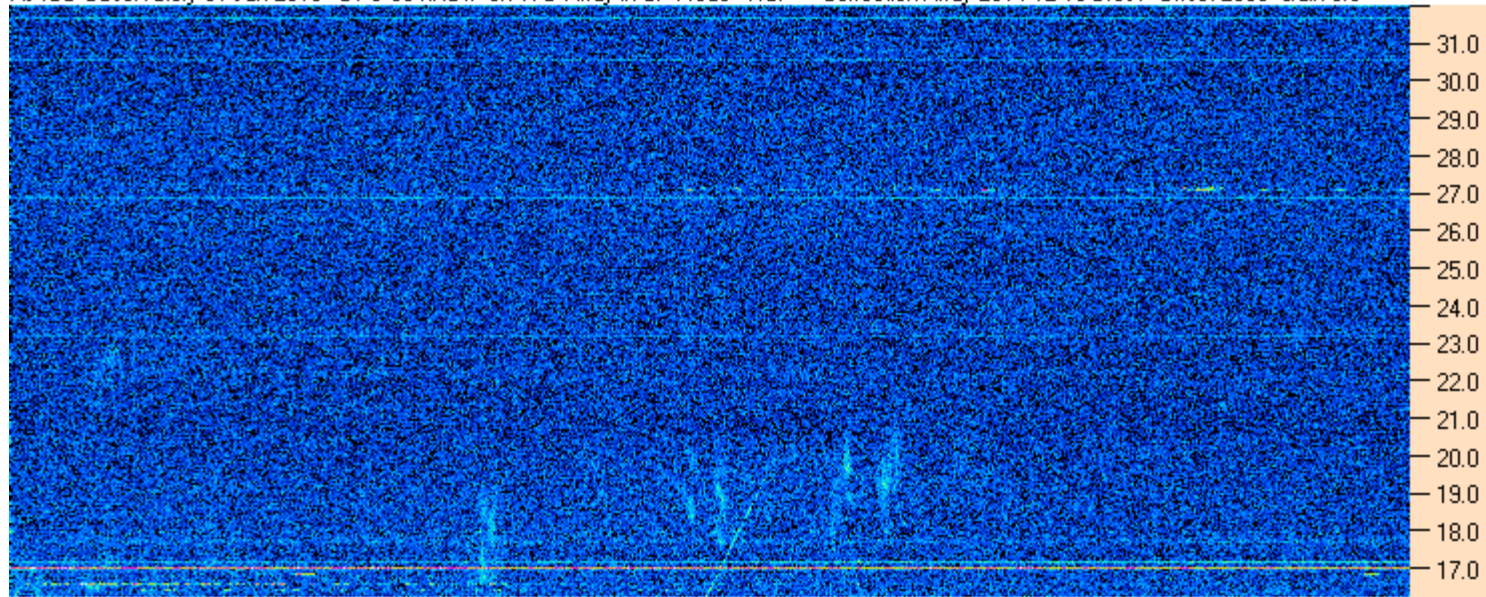
Dave

AJ4CO Observatory 01 Jan 2015, log entry 254



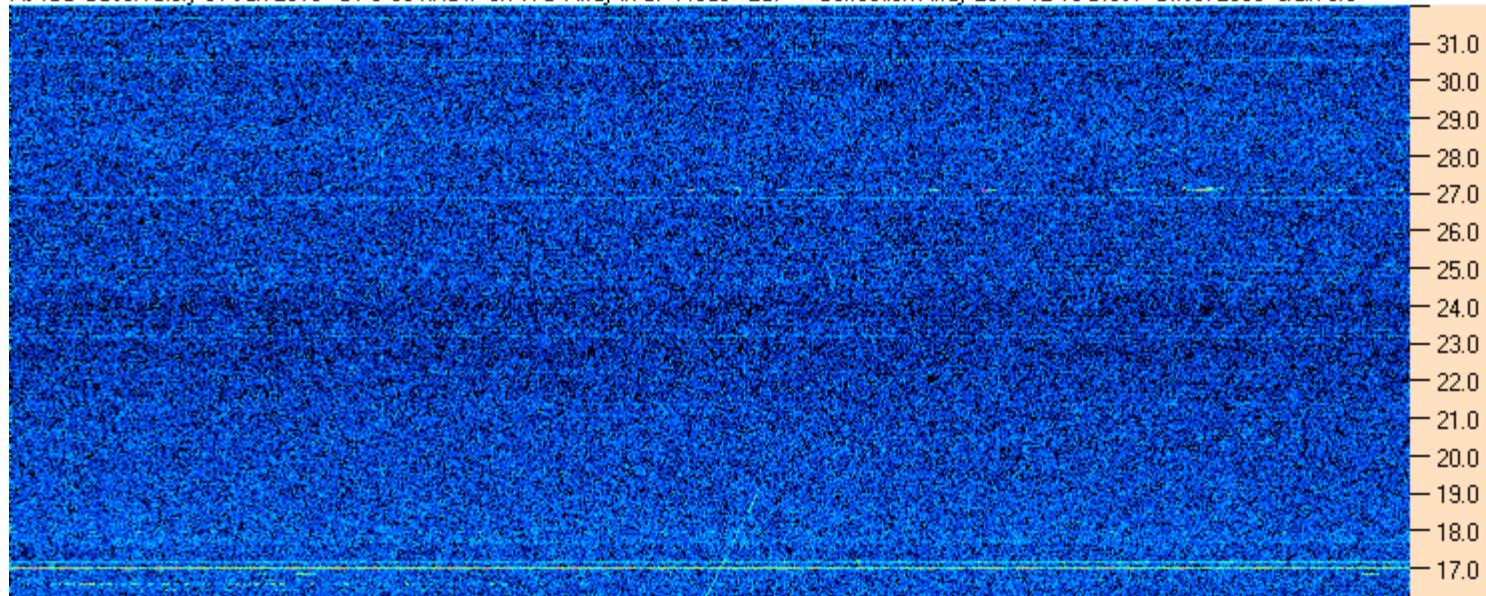


AJ4CO Observatory 01 Jan 2015 - DPS 30 kHz IF on TFD Array in CP Mode - RCP Correction Array 2014 12 18 B.csv Offset 2050 Gain 5.0



07:10:00 07:11:26 07:12:52 07:14:17 07:15:43 07:17:09 07:18:34 07:20:00

AJ4CO Observatory 01 Jan 2015 - DPS 30 kHz IF on TFD Array in CP Mode - LCP Correction Array 2014 12 18 B.csv Offset 2050 Gain 5.0



01/01/2015 by AJ4CO RSP in High Springs, FL

