

Subject: [radiojove-data] 22 Dec 2014 non-Io-A

From: Dave Typinski <davetyp@typnet.net>

Date: 12/22/2014 22:43

To: RadioJove-Data <radiojove-data@lists.nasa.gov>

Adding to Tom & David & Wes & Jim's nice reports, here's some more non-Io-A from Monday morning.

RCP dominant bursting from 18 to 25 MHz. There is sloping lane structure in this spectrogram at +10 kHz/sec.

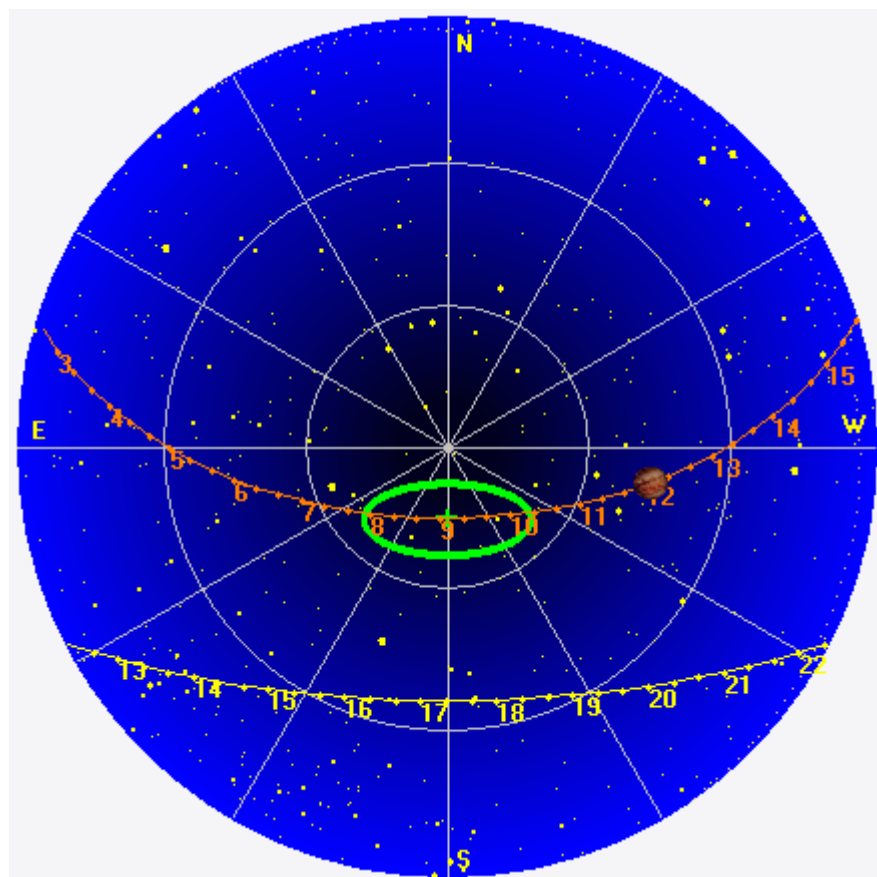
Jupiter was +40° to +44° off axis.

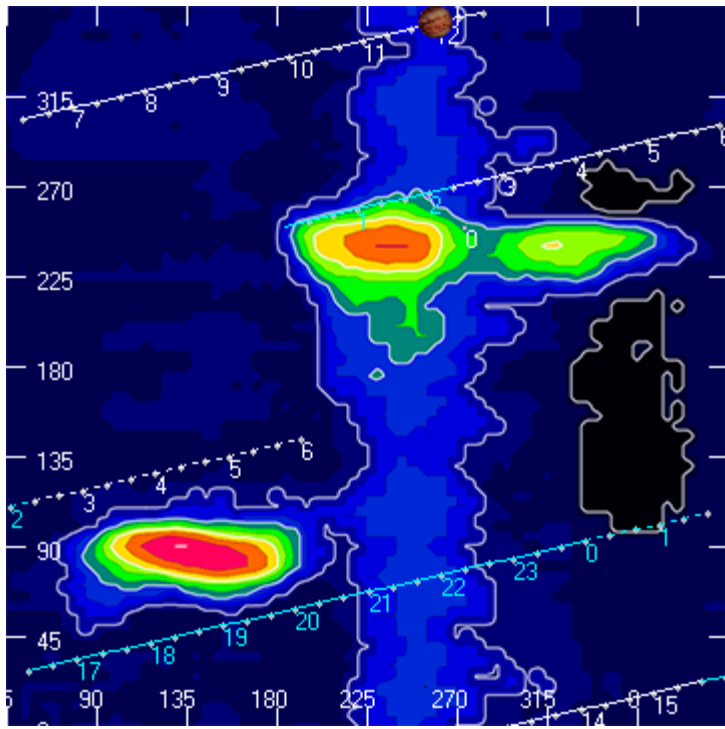
Jupiter was leading the Sun by 128°.

--

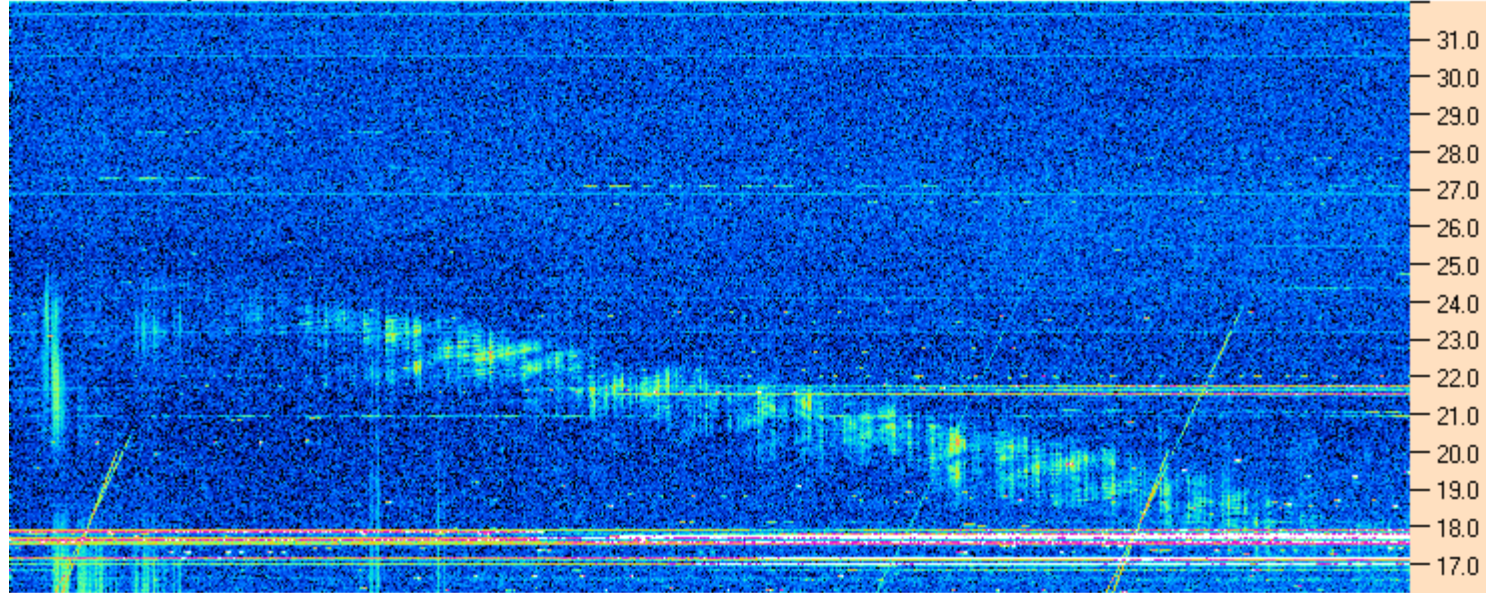
Dave

AJ4CO Observatory 22 Dec 2014, log entry 242





AJ4CO Observatory 21 Dec 2014 - DPS 30 kHz IF on TFD Array in CP Mode - RCP Correction Array 2014 12 18.csv Offset 2050 Gain 5.0



11:52:00 11:54:17 11:56:34 11:58:52 12:01:09 12:03:26 12:05:43 12:08:00

AJ4CO Observatory 21 Dec 2014 - DPS 30 kHz IF on TFD Array in CP Mode - LCP Correction Array 2014 12 18.csv Offset 2050 Gain 5.0

