

**Subject:** [radiojove-data] 21 Dec 2014 non-Io-A/C

**From:** Dave Typinski <davetyp@typnet.net>

**Date:** 12/22/2014 22:42

**To:** RadioJove-Data <radiojove-data@lists.nasa.gov>

Adding to Jim & Wes's nice reports, here's some more non-Io-A/C from Sunday morning.

RCP dominant weak non-Io-A L bursting from 16 to 22 MHz, no modulation lanes visible.

LCP dominant stronger non-Io-C L bursting from 16 to 19 MHz, no modulation lanes visible.

Jupiter was  $-27^\circ$  to  $-9^\circ$  off axis.

Jupiter was leading the Sun by  $127^\circ$ .

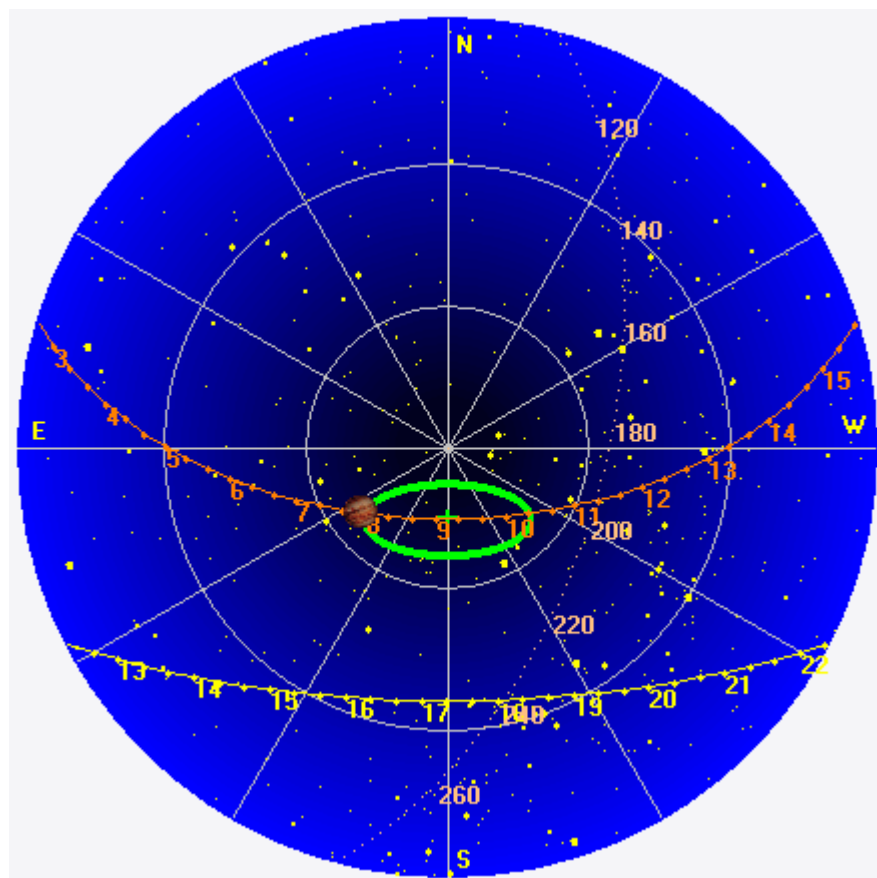
--

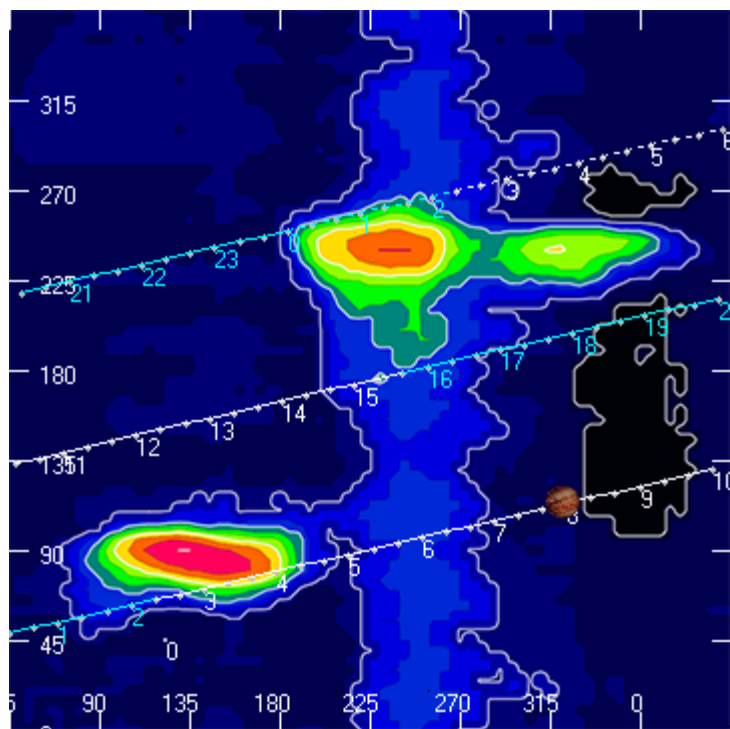
Dave

---

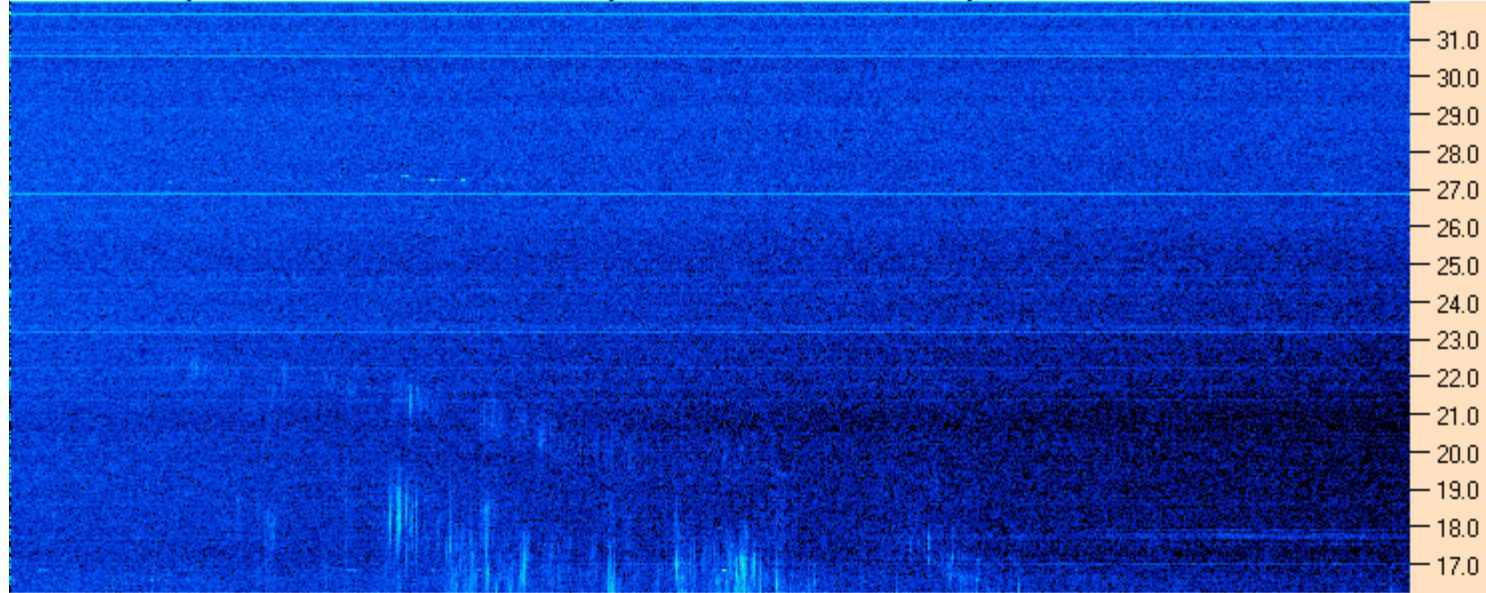
**AJ4CO Observatory 21 Dec 2014, log entry 240(RCP), 241(LCP)**

---



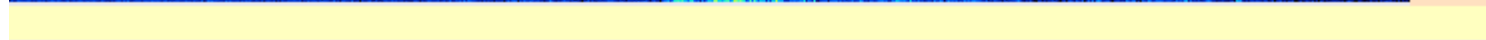
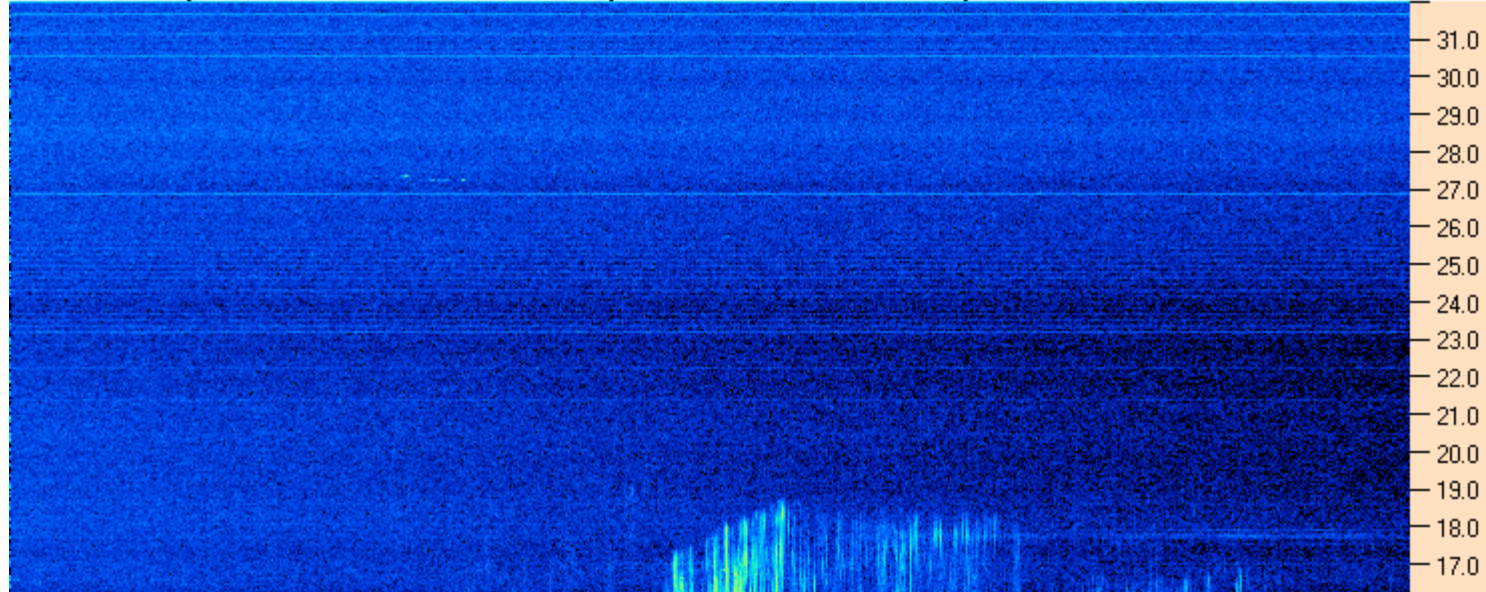


AJ4CO Observatory 21 Dec 2014 - DPS 30 kHz IF on TFD Array in CP Mode - RCP Correction Array 2014 12 18.csv Offset 2050 Gain 5.0



07:10:00 07:23:34 07:37:09 07:50:43 08:04:17 08:17:51 08:31:26 08:45:00

AJ4CO Observatory 21 Dec 2014 - DPS 30 kHz IF on TFD Array in CP Mode - LCP Correction Array 2014 12 18.csv Offset 2050 Gain 5.0



12/21/2014 by AJ4CO RSP in High Springs, FL

