

Subject: [radiojove-data] 17 Dec 2014 non-Io-B

From: Dave Typinski <davetyp@typnet.net>

Date: 12/18/2014 21:58

To: RadioJove-Data <radiojove-data@lists.nasa.gov>

Here's some weak non-Io-B from Wednesday morning.

RCP dominant L bursting from 16 to 23 MHz. No modulation lanes visible.

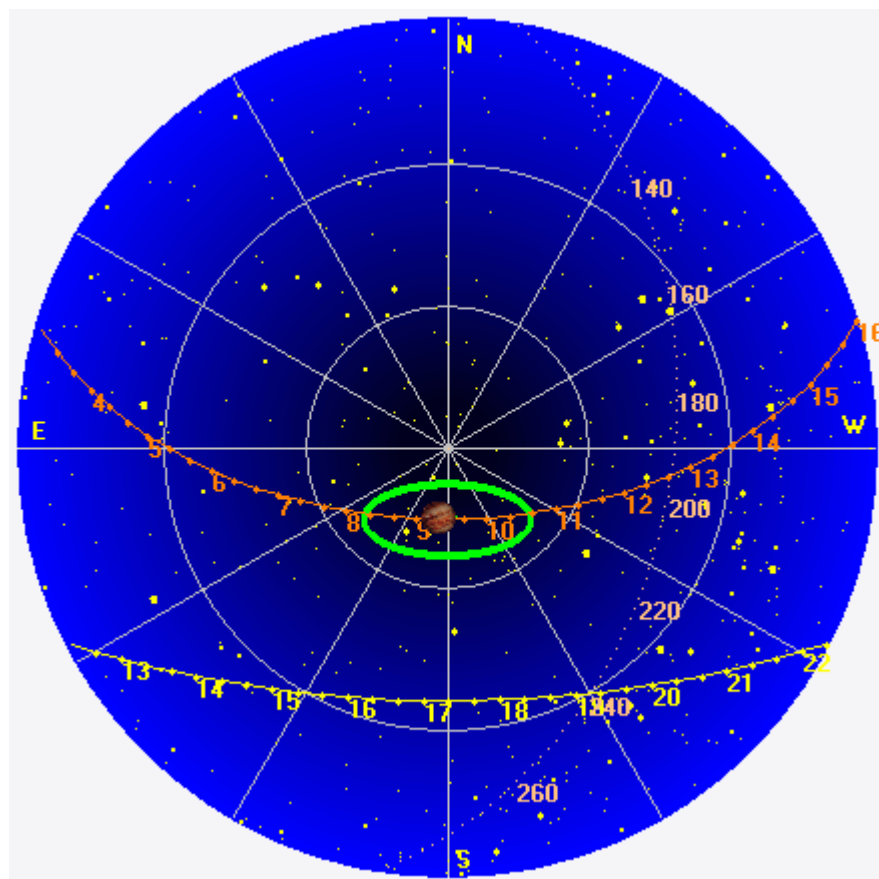
Jupiter was -5° to $+2^\circ$ off axis.

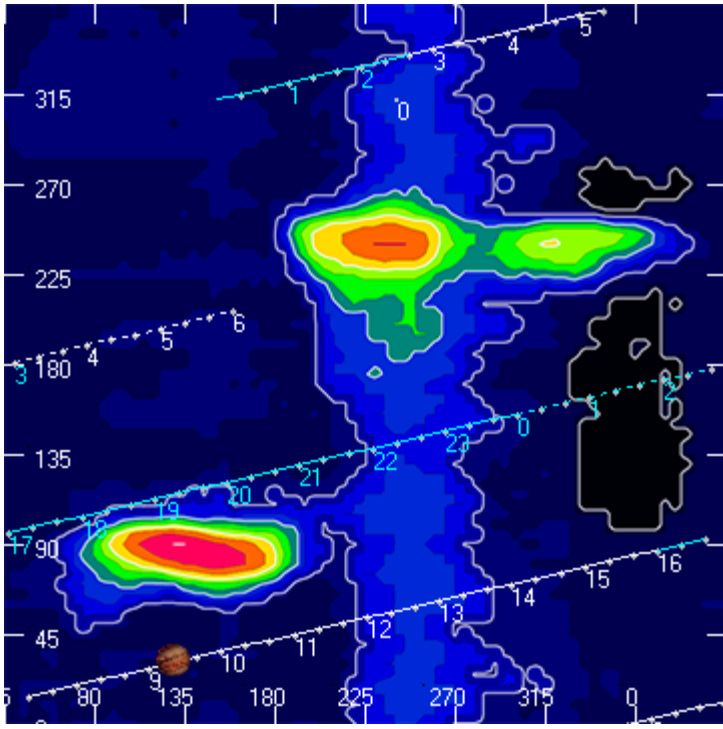
Jupiter was leading the Sun by 123° .

--

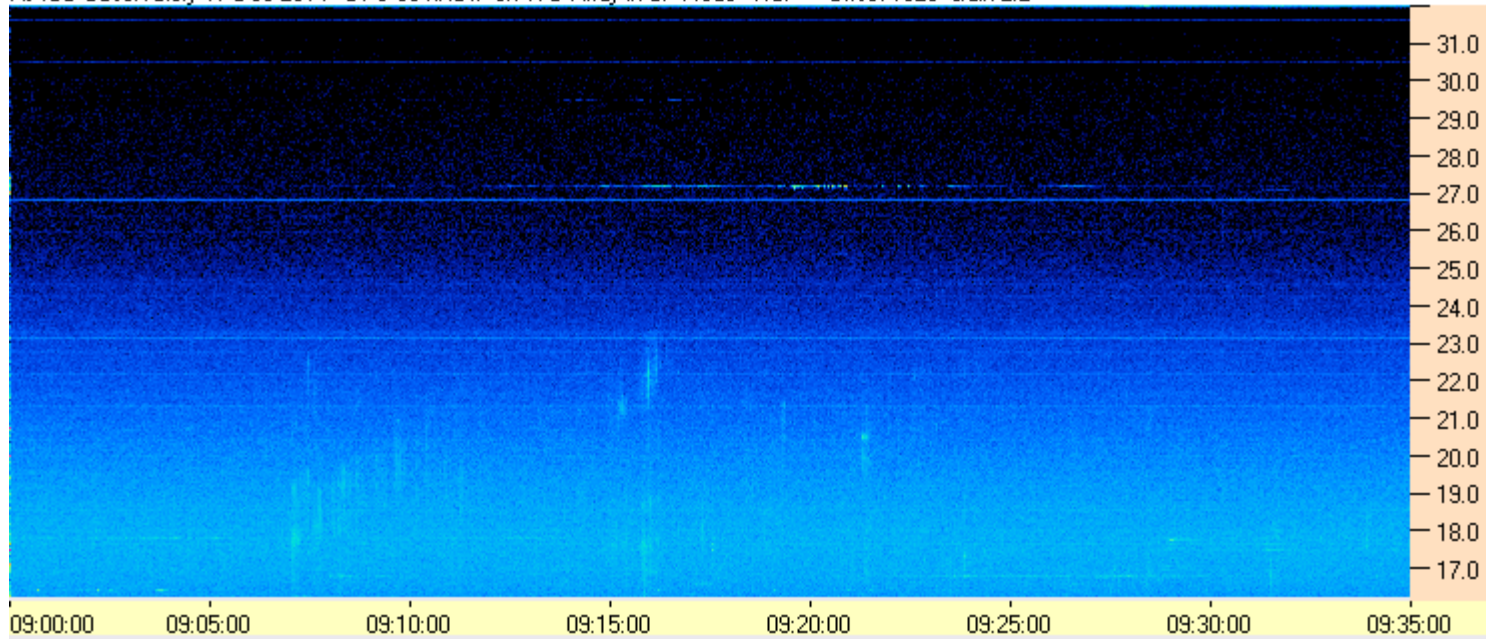
Dave

AJ4CO Observatory 17 Dec 2014, log entry 233





AJ4CO Observatory 17 Dec 2014 - DPS 30 kHz IF on TFD Array in CP Mode - RCP Offset 1825 Gain 2.2



AJ4CO Observatory 17 Dec 2014 - DPS 30 kHz IF on TFD Array in CP Mode - LCP Offset 1825 Gain 2.2

