

**Subject:** [radiojove-data] 16 Dec 2014 Non-Io-A

**From:** Dave Typinski <davetyp@typnet.net>

**Date:** 12/17/2014 18:03

**To:** RadioJove-Data <radiojove-data@lists.nasa.gov>

Adding to Wes's nice report, here's some weak non-Io-A from Tuesday morning.

RCP dominant L bursting from 16 to 21 MHz. No modulation lanes visible. Nothing worth looking at in the 20.1 MHz strip chart.

Jupiter was  $-34^\circ$  to  $-26^\circ$  off axis.

Jupiter was leading the Sun by  $122^\circ$ .

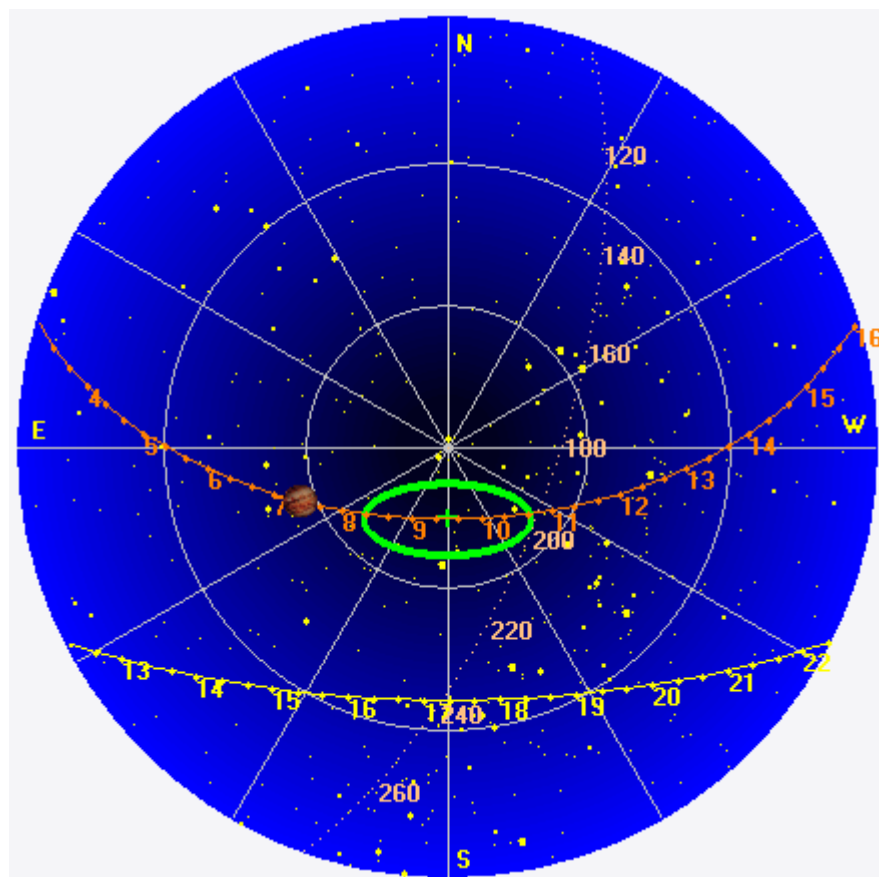
--

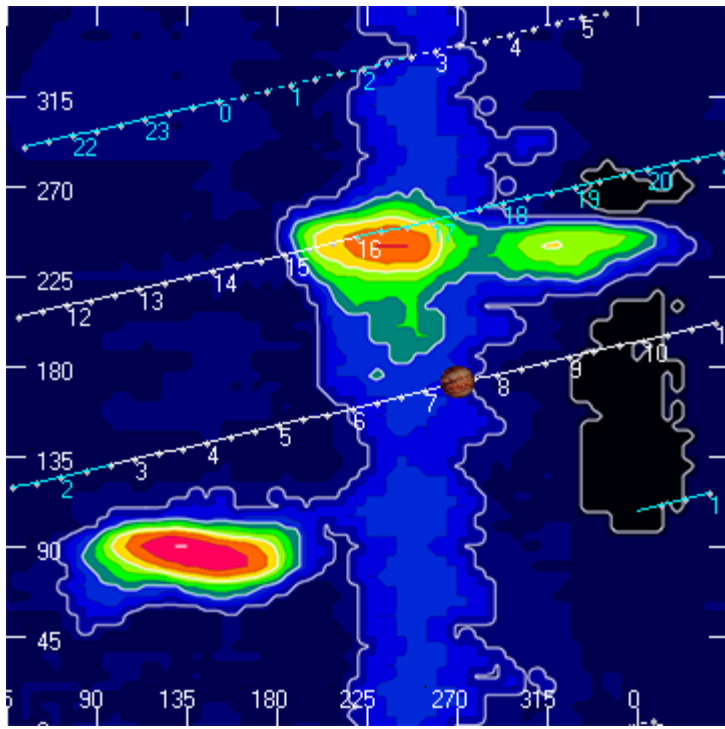
Dave

---

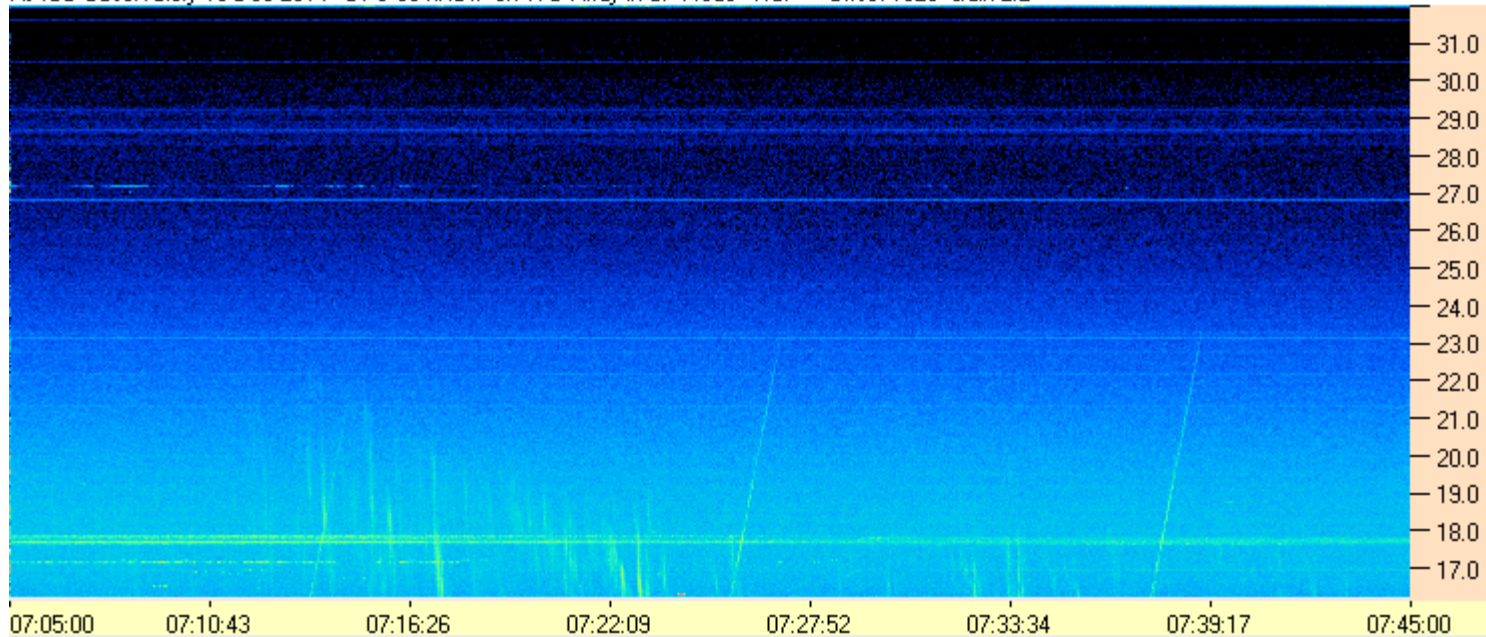
**AJ4CO Observatory 16 Dec 2014, log entry 231**

---

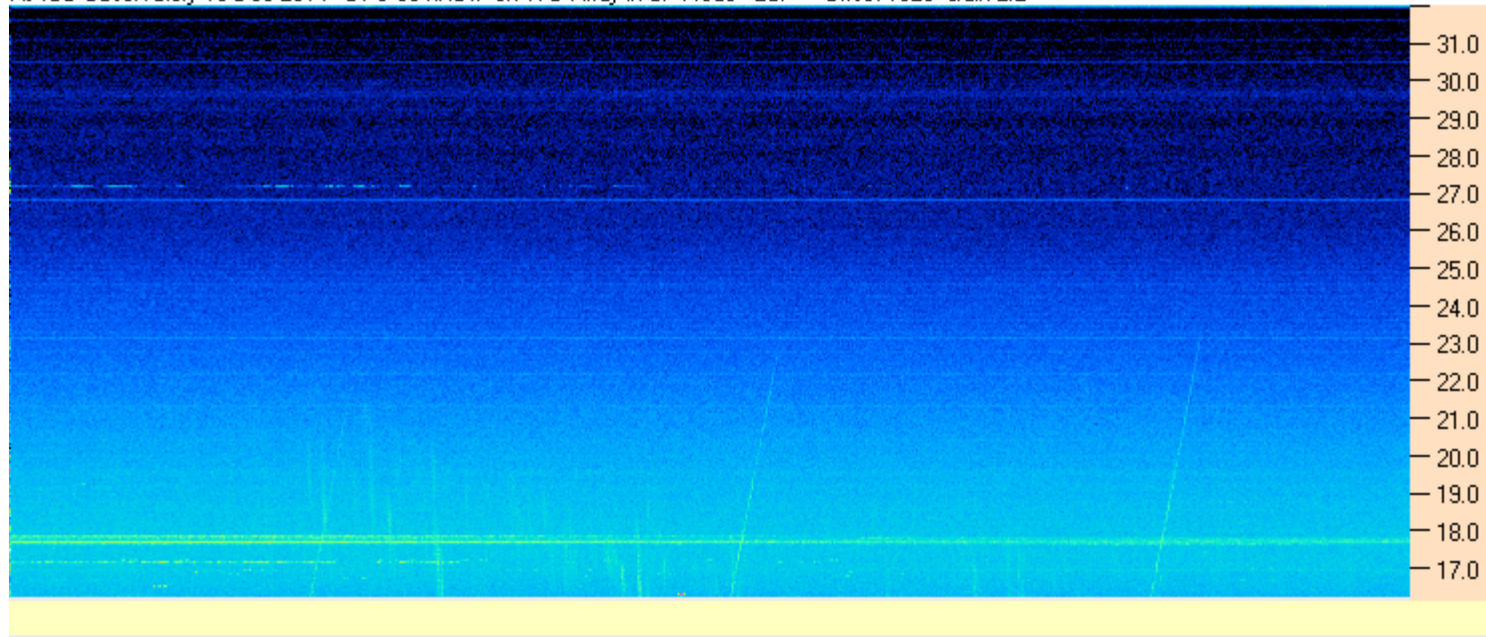




AJ4CO Observatory 16 Dec 2014 - DPS 30 kHz IF on TFD Array in CP Mode - RCP Offset 1825 Gain 2.2



AJ4CO Observatory 16 Dec 2014 - DPS 30 kHz IF on TFD Array in CP Mode - LCP Offset 1825 Gain 2.2



12/16/2014 by AJ4CO RSP in High Springs, FL

