

**Subject:** [radiojove-data] 13 Dec 2014 non-Io-A

**From:** Dave Typinski <davetyp@typnet.net>

**Date:** 12/14/2014 00:48

**To:** RadioJove-Data <radiojove-data@lists.nasa.gov>

Here's some weak, brief non-Io-A from Saturday morning.

RCP dominant L bursting from 16 to 20 MHz. No modulation lanes visible. Nothing worth looking at in the 20.1 MHz strip chart.

Jupiter was  $0^\circ$  to  $+6^\circ$  off axis.

Jupiter was leading the Sun by  $119^\circ$ .

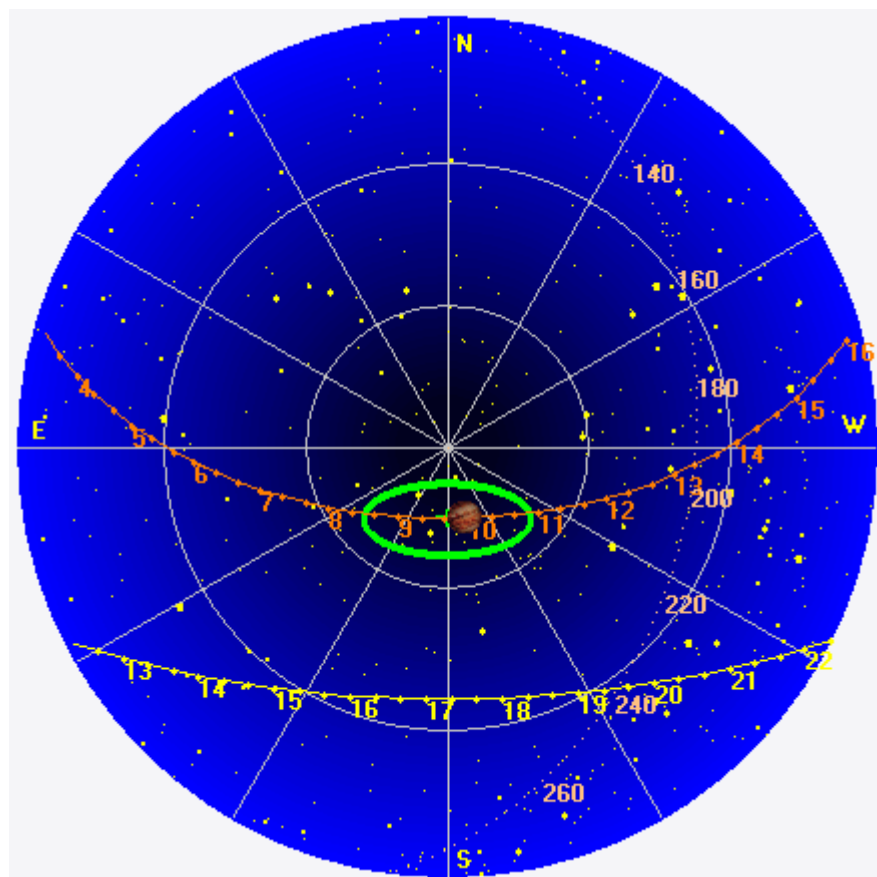
--

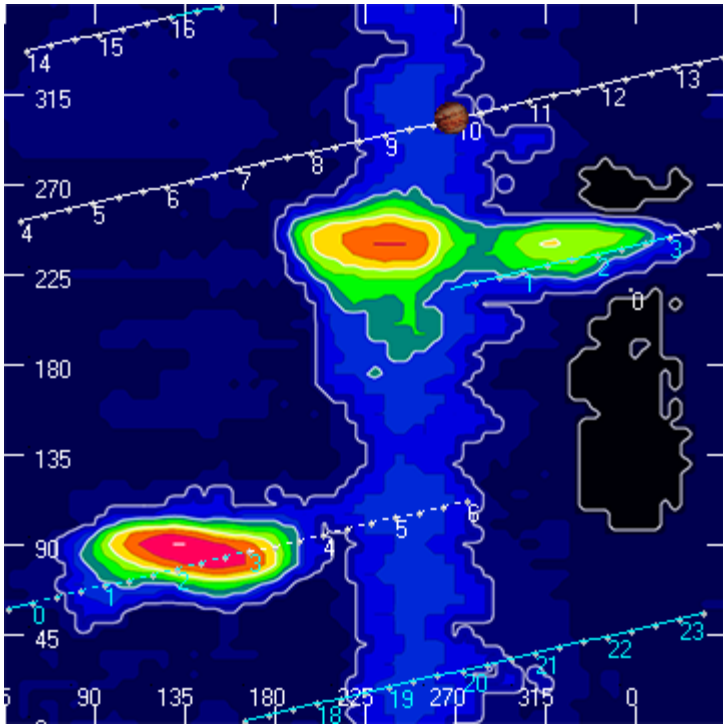
Dave

---

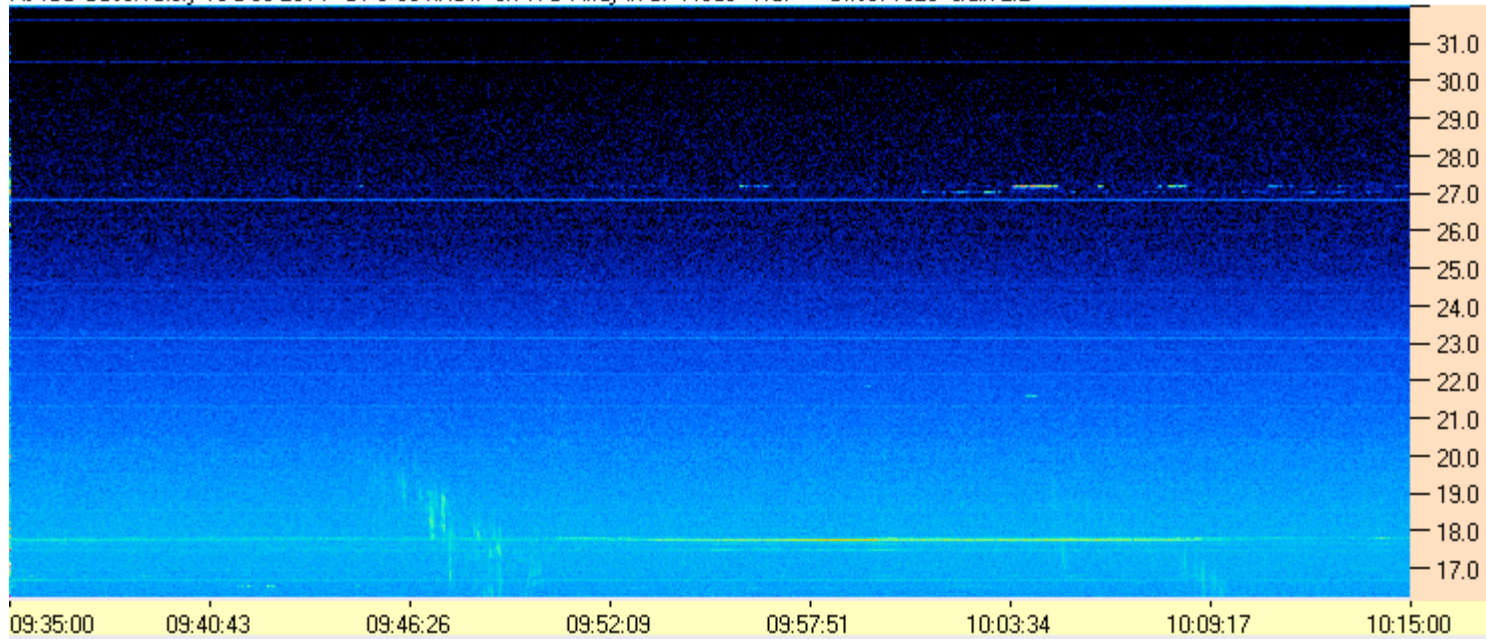
AJ4CO Observatory 13 Dec 2014, log entry 230

---

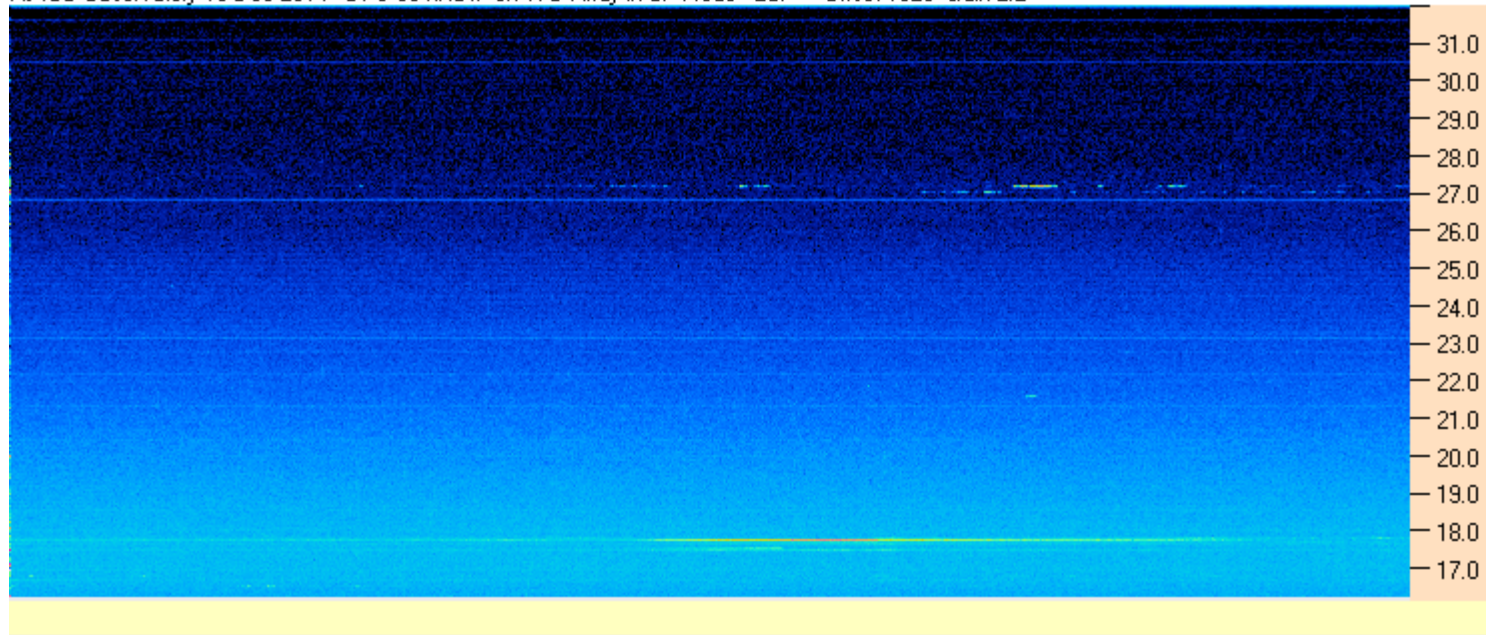




AJ4CO Observatory 13 Dec 2014 - DPS 30 kHz IF on TFD Array in CP Mode - RCP Offset 1825 Gain 2.2



AJ4CO Observatory 13 Dec 2014 - DPS 30 kHz IF on TFD Array in CP Mode - LCP Offset 1825 Gain 2.2



12/13/2014 by AJ4CO RSP in High Springs, FL

