

**Subject:** [radiojove-data] 11 Dec 2014 Io-C

**From:** Dave Typinski <davetyp@typnet.net>

**Date:** 12/12/2014 21:01

**To:** RadioJove-Data <radiojove-data@lists.nasa.gov>

Here's some very weak Io-C from Thursday morning.

LCP dominant L bursting from 16 to 18 MHz. No modulation lanes visible.

Jupiter was  $-7^\circ$  to  $-2^\circ$  off axis.

Jupiter was leading the Sun by  $117^\circ$ .

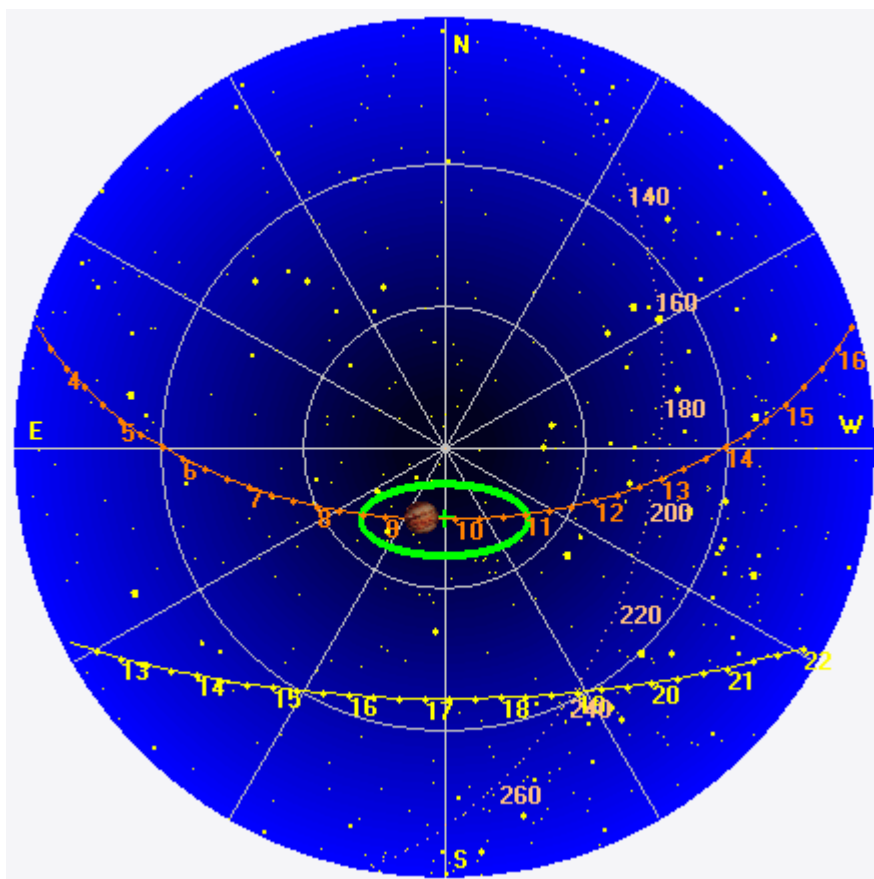
--

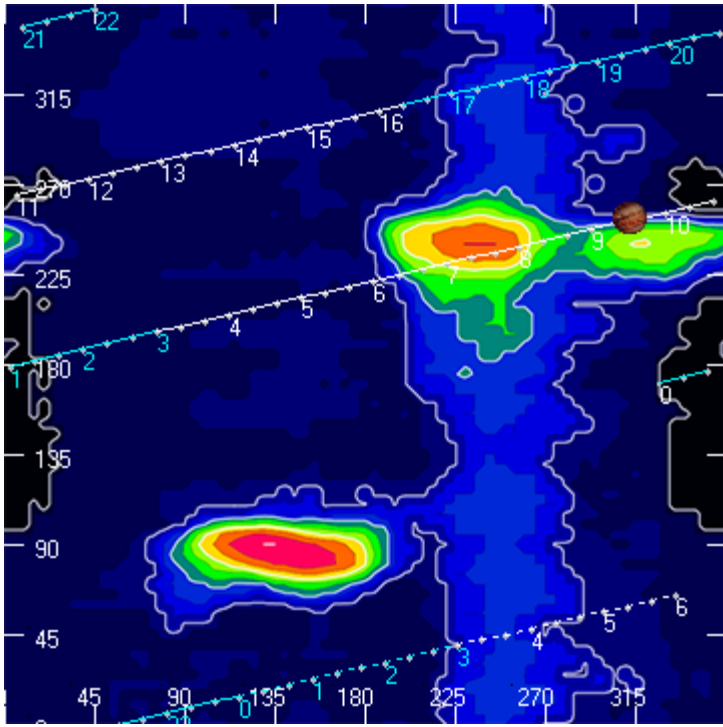
Dave

---

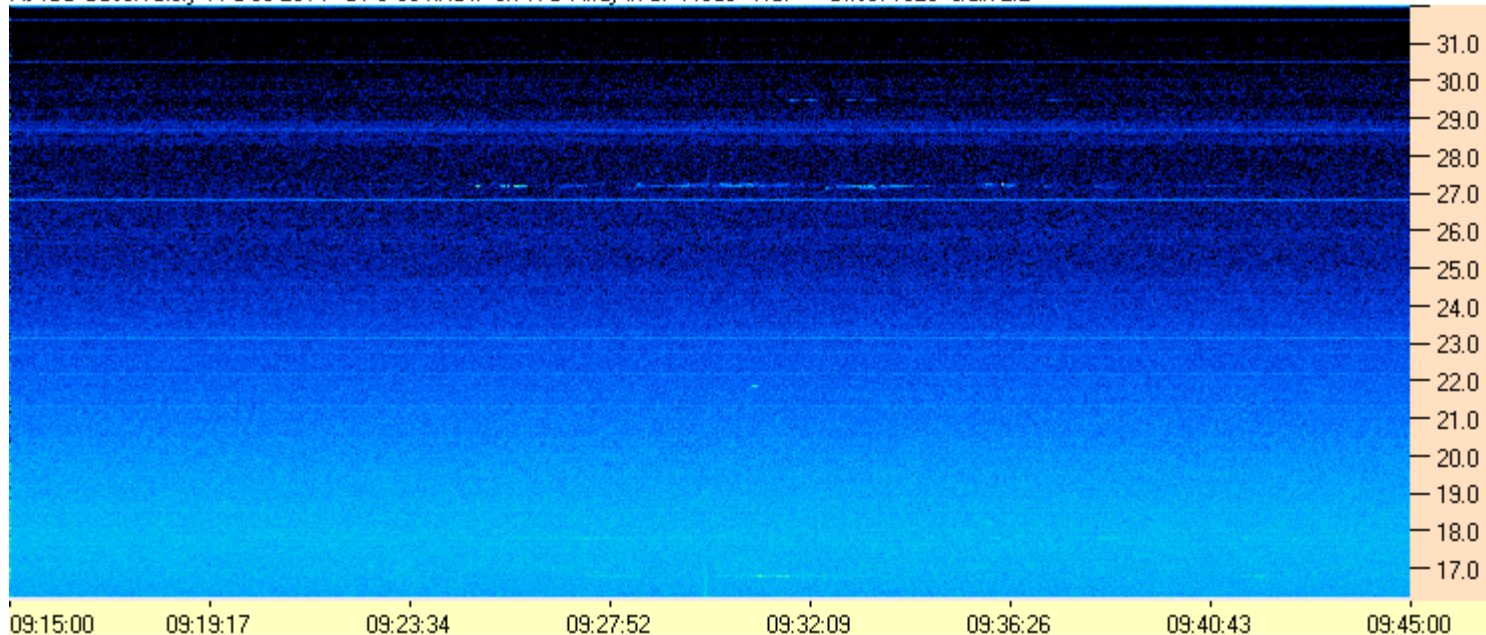
**AJ4CO Observatory 11 Dec 2014, log entry 227**

---





AJ4CO Observatory 11 Dec 2014 - DPS 30 kHz IF on TFD Array in CP Mode - RCP Offset 1825 Gain 2.2



AJ4CO Observatory 11 Dec 2014 - DPS 30 kHz IF on TFD Array in CP Mode - LCP Offset 1825 Gain 2.2

