

Subject: [radiojove-data] 15 Nov 2014 non-Io-C

From: Dave Typinski <davetyp@typnet.net>

Date: 11/15/2014 21:17

To: RadioJove-Data <radiojove-data@lists.nasa.gov>

Adding to Jim "Eagle Eye" Brown's nice report, here's some really weak non-Io-C from Saturday morning.

RCP dominant L bursting observed from 16 to 19 MHz. No modulation lanes (and barely any emission, for that matter).

It didn't help that Jupiter was -47° to -42° off axis. Jim's array sure saw it better.

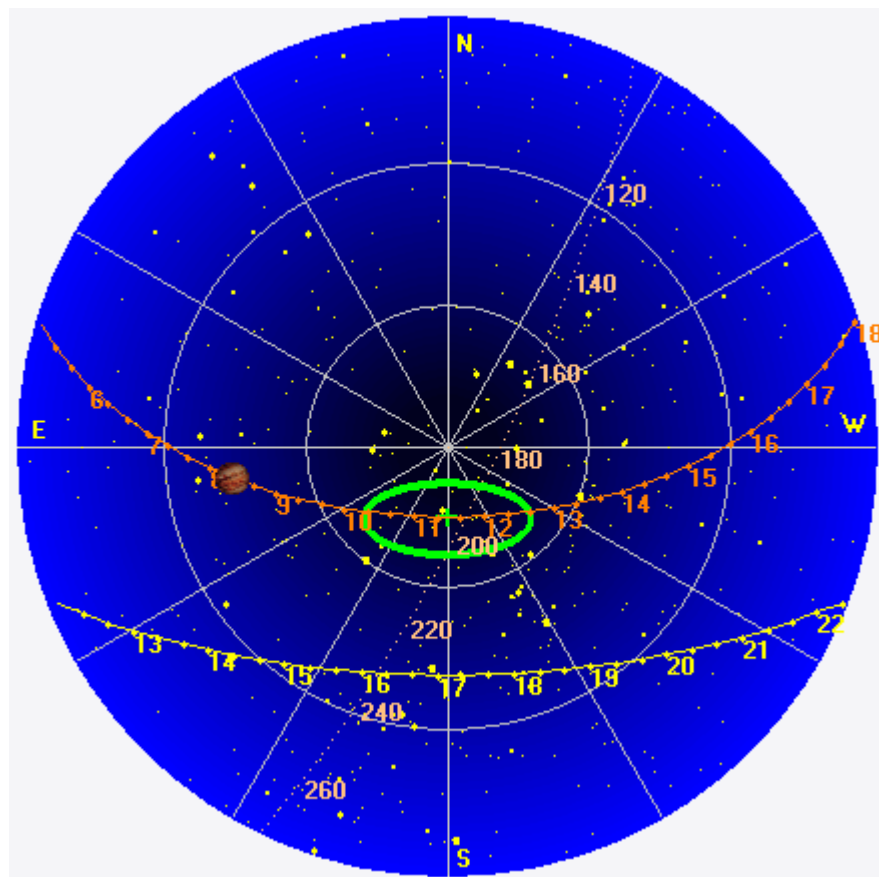
Since this was RCP, this might be emission from the A/B source that just happened to occur in the C region of the phase plane. We've seen this happen with Io-controlled emission. Might happen with the non-Io-controlled emission too.

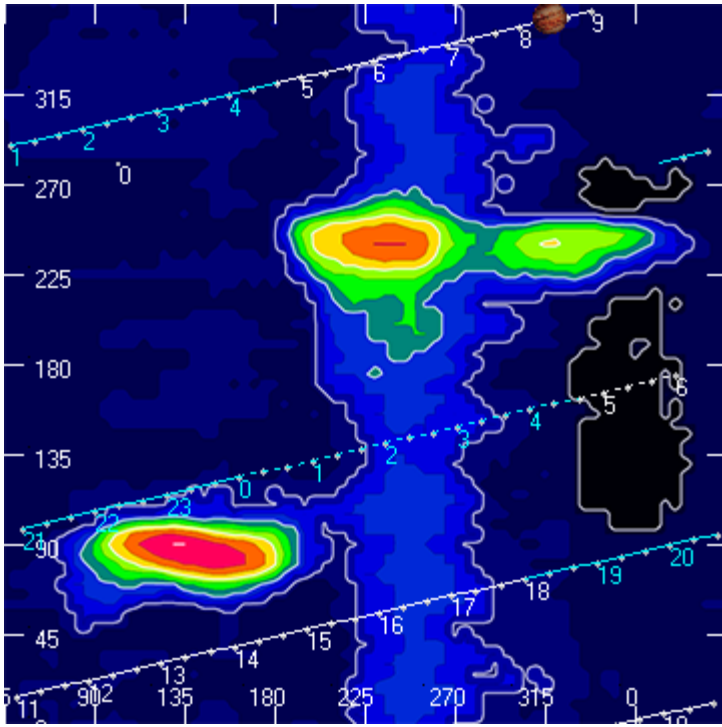
Jupiter was leading the Sun by 91° .

--

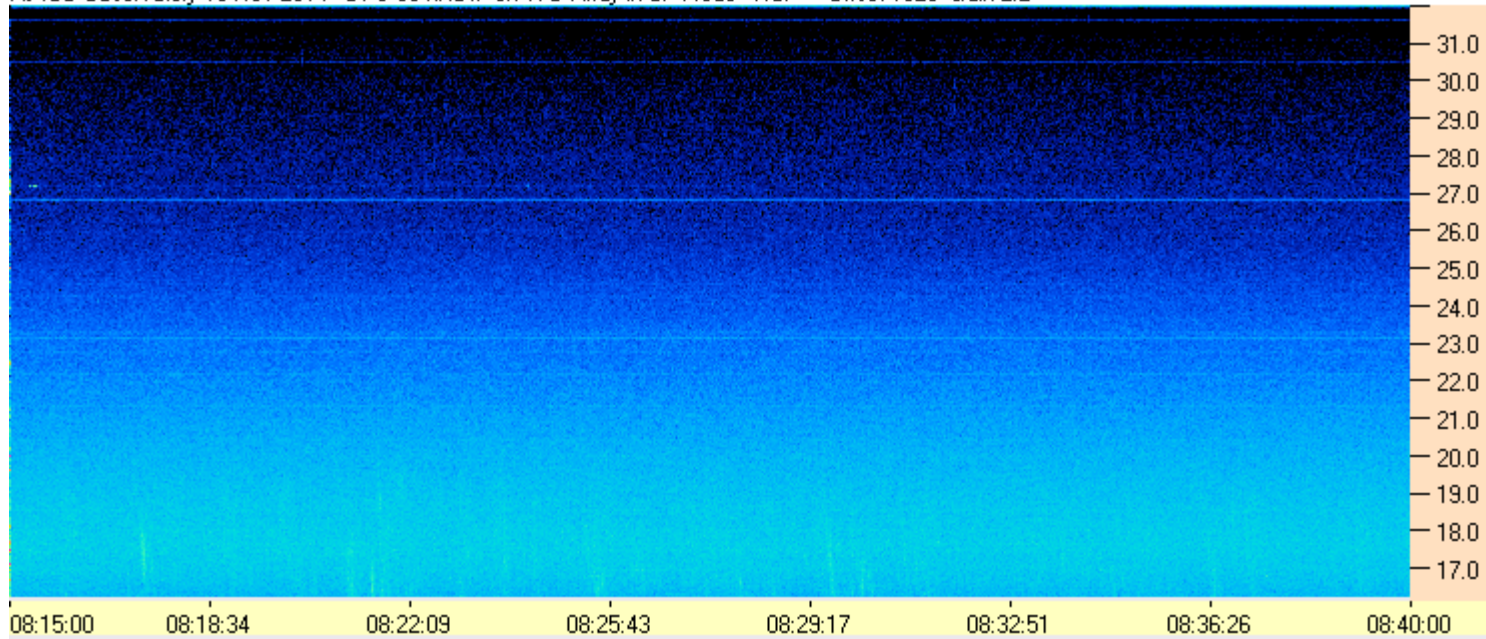
Dave

AJ4CO Observatory 15 Nov 2014, log entry 214





AJ4CO Observatory 15 Nov 2014 - DPS 30 kHz IF on TFD Array in CP Mode - RCP Offset 1825 Gain 2.2



AJ4CO Observatory 15 Nov 2014 - DPS 30 kHz IF on TFD Array in CP Mode - RCP Offset 1825 Gain 2.2

