

**Subject:** [radiojove-data] 31 Oct 2014 non-Io-C

**From:** Dave Typinski <davetyp@typnet.net>

**Date:** 10/31/2014 21:28

**To:** RadioJove-Data <radiojove-data@lists.nasa.gov>

Adding to Tom's report, here's some poorly-received non-Io-C from Friday morning.

The array was steered 30 degs N of zenith at the time, so polarization is about useless -- it's surprising the array saw anything at all with Jupiter 46 degs off axis.

Kinda sorta maybe RCP dominant (or not), L bursting from 17 to 21 MHz. No visible modulation lanes.

Jupiter was 46° off axis.

Jupiter was leading the Sun by 78°.

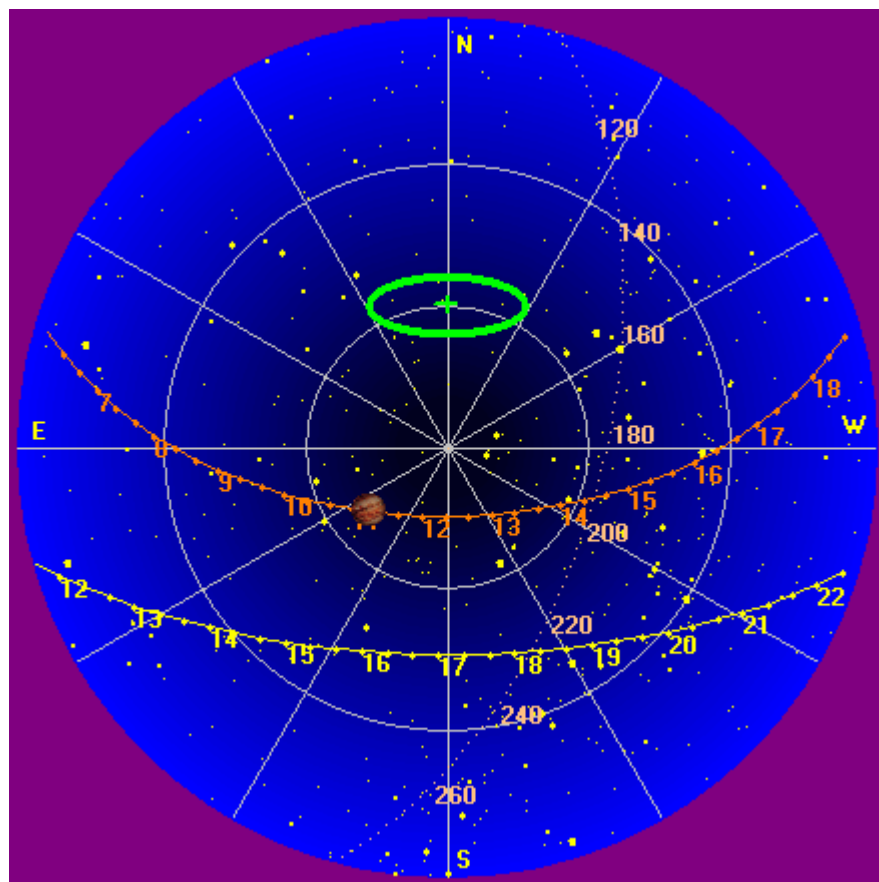
--

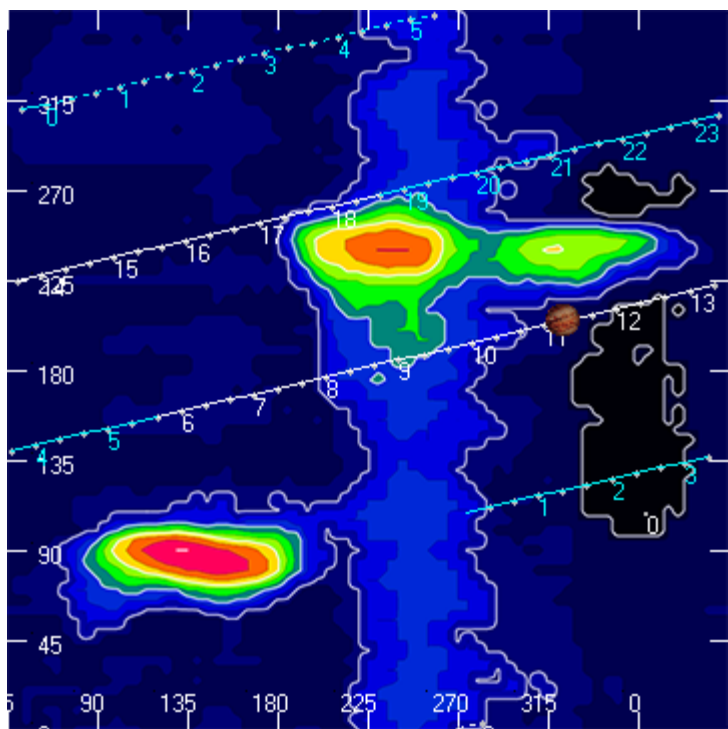
Dave

---

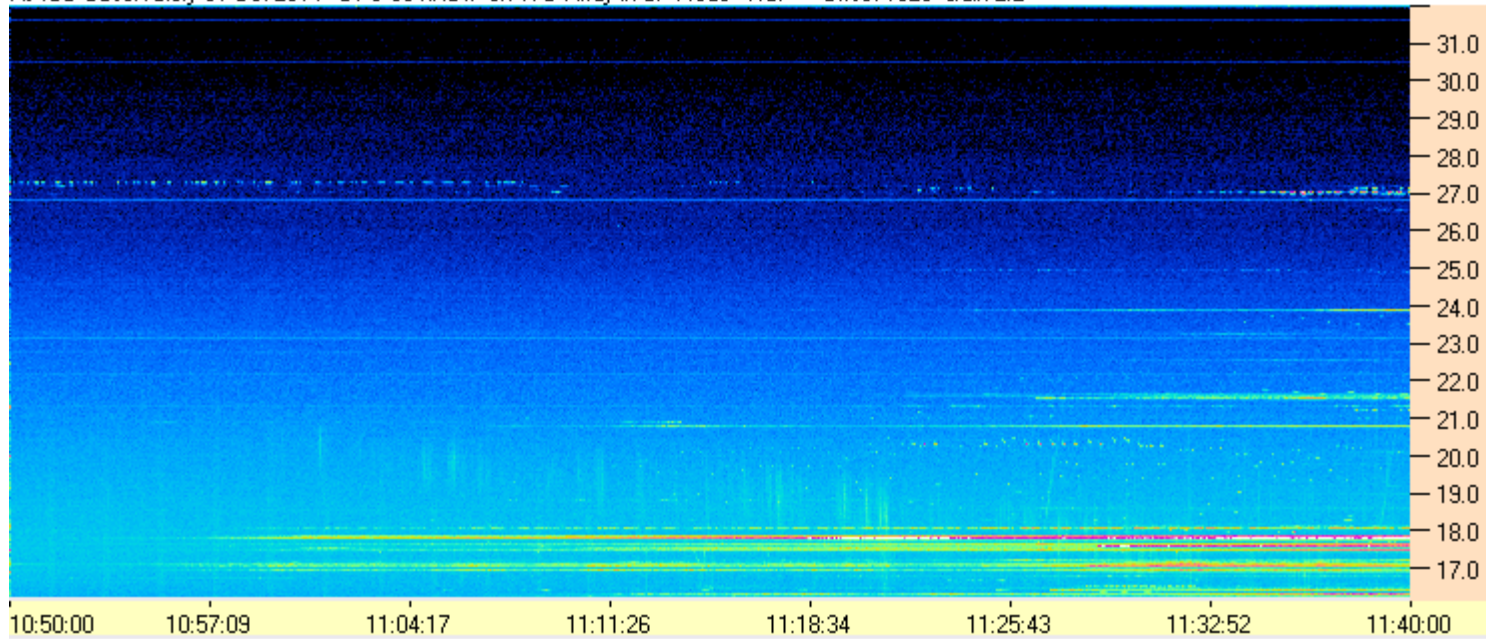
**AJ4CO Observatory 31 Oct 2014, log entry 205**

---





AJ4CO Observatory 31 Oct 2014 - DPS 30 kHz IF on TFD Array in CP Mode - RCP Offset 1825 Gain 2.2



AJ4CO Observatory 31 Oct 2014 - DPS 30 kHz IF on TFD Array in CP Mode - LCP Offset 1825 Gain 2.2

