

**Subject:** [radiojove-data] 17 Oct 2014 Io-C

**From:** Dave Typinski <davetyp@typnet.net>

**Date:** 10/19/2014 13:30

**To:** RadioJove-Data <radiojove-data@lists.nasa.gov>

Here's some Io-C from Friday morning.

LCP dominant L bursting from 16 to 19 MHz with an N event between 18 and 19 MHz. No visible modulation lanes.

Jupiter was  $-23^\circ$  to  $-17^\circ$  off axis.

Jupiter was leading the Sun by  $65^\circ$ .

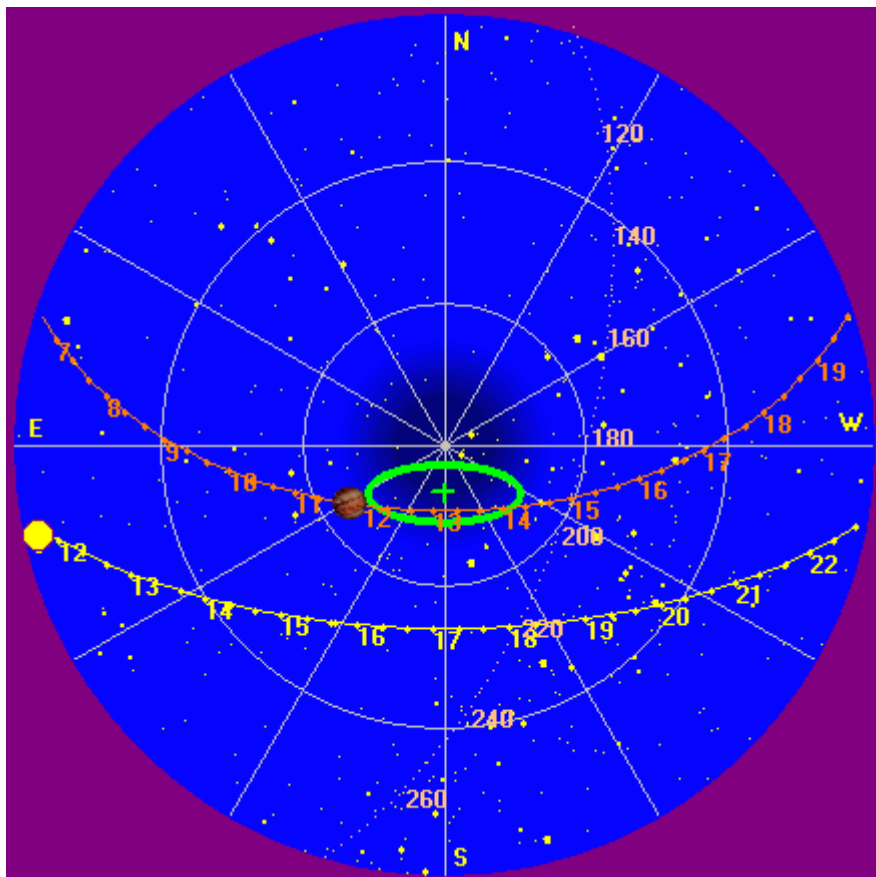
--

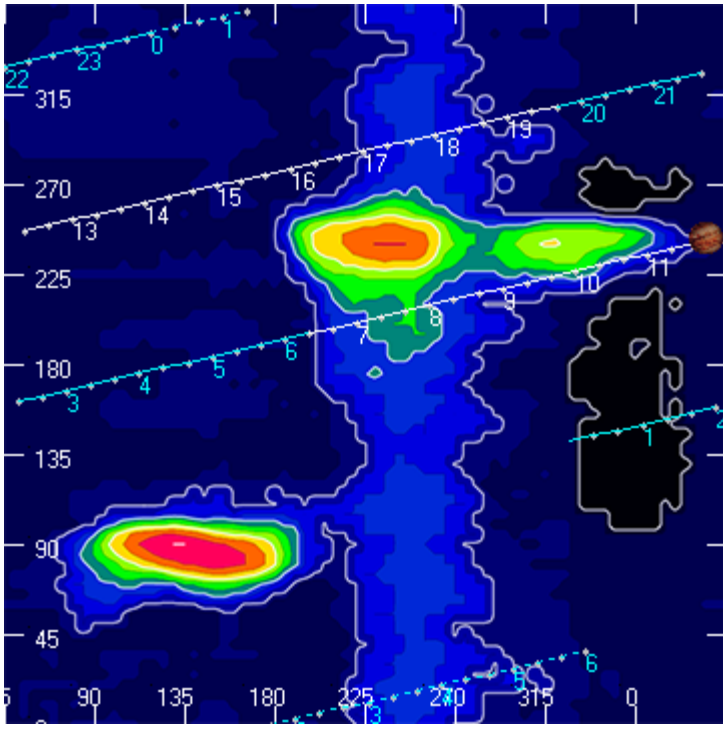
Dave

---

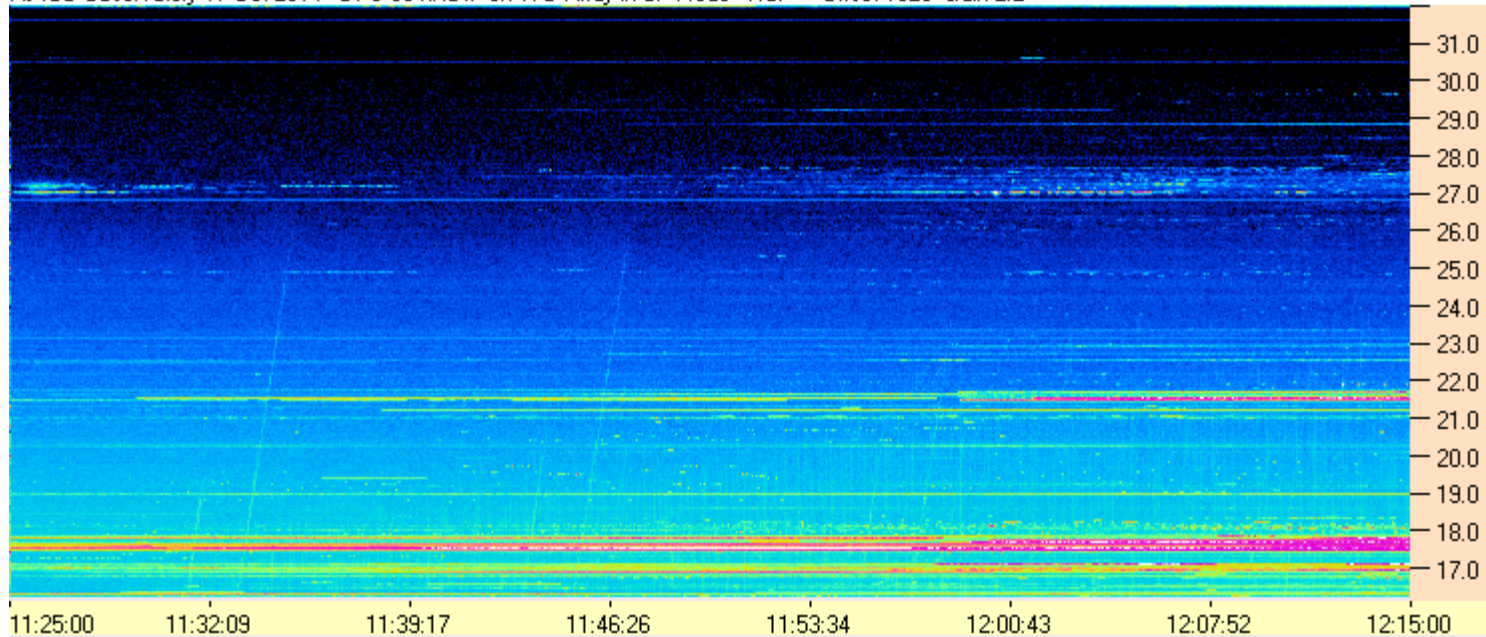
**AJ4CO Observatory 17 Oct 2014**

---





AJ4CO Observatory 17 Oct 2014 - DPS 30 kHz IF on TFD Array in CP Mode - RCP Offset 1825 Gain 2.2



AJ4CO Observatory 17 Oct 2014 - DPS 30 kHz IF on TFD Array in CP Mode - LCP Offset 1825 Gain 2.2

