

Subject: [radiojove-data] 09 Oct 2014 non-Io-C

From: Dave Typinski <davetyp@typnet.net>

Date: 10/10/2014 17:26

To: RadioJove-Data <radiojove-data@lists.nasa.gov>

Here's some non-Io-C from Thursday morning.

RCP dominant L bursting from 16 to 25 MHz. No modulation lanes evident.

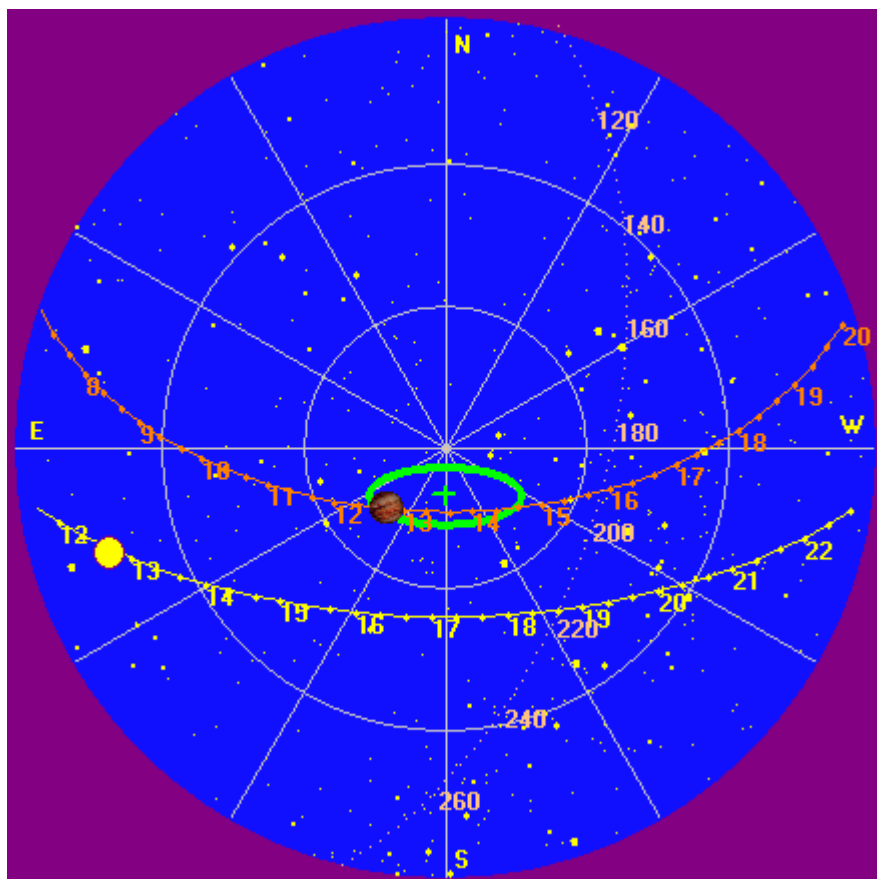
Jupiter was -19° to -7° off axis.

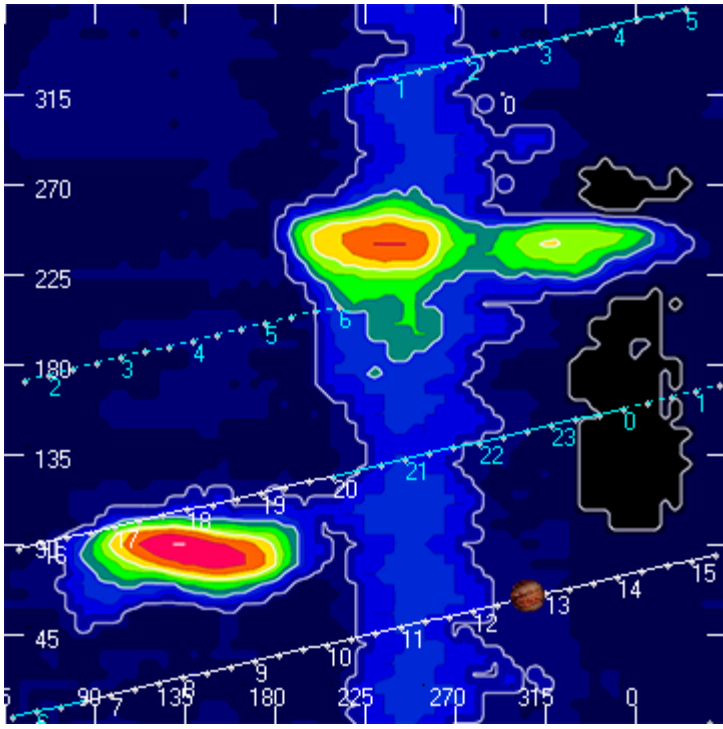
Jupiter was leading the Sun by 59° .

--

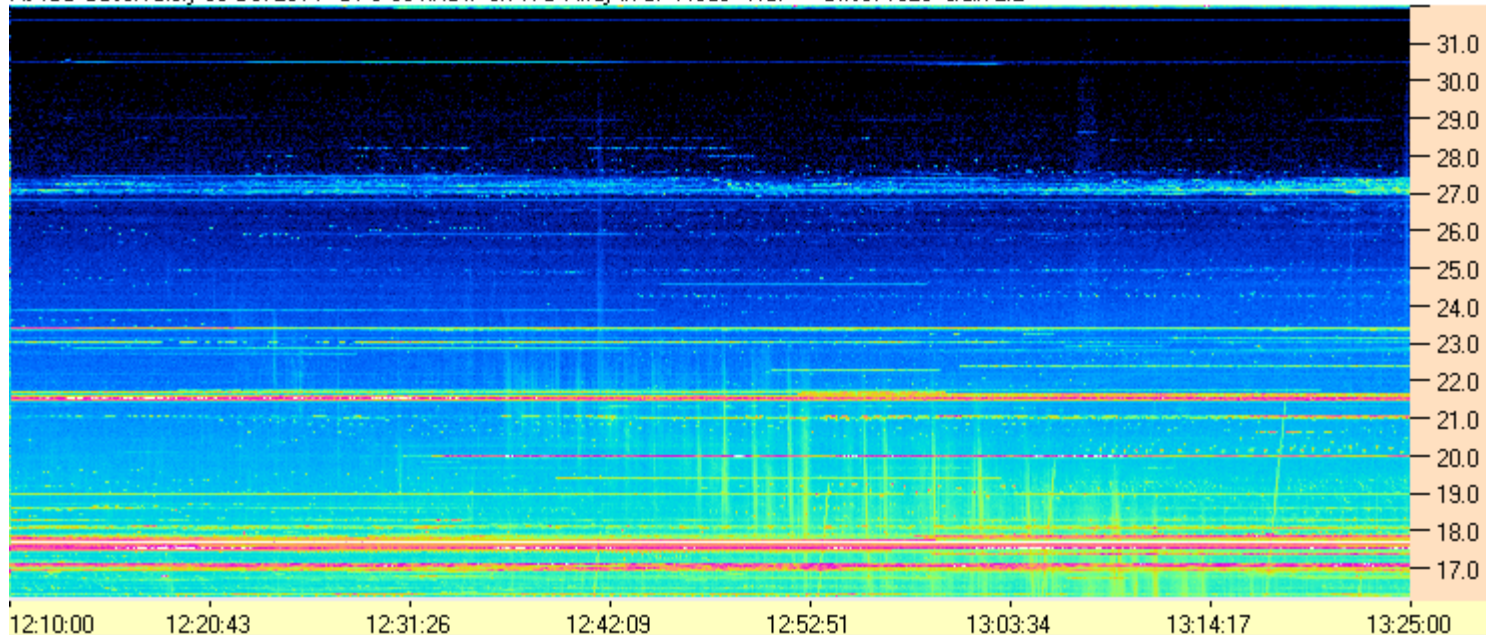
Dave

AJ4CO Observatory 09 Oct 2014

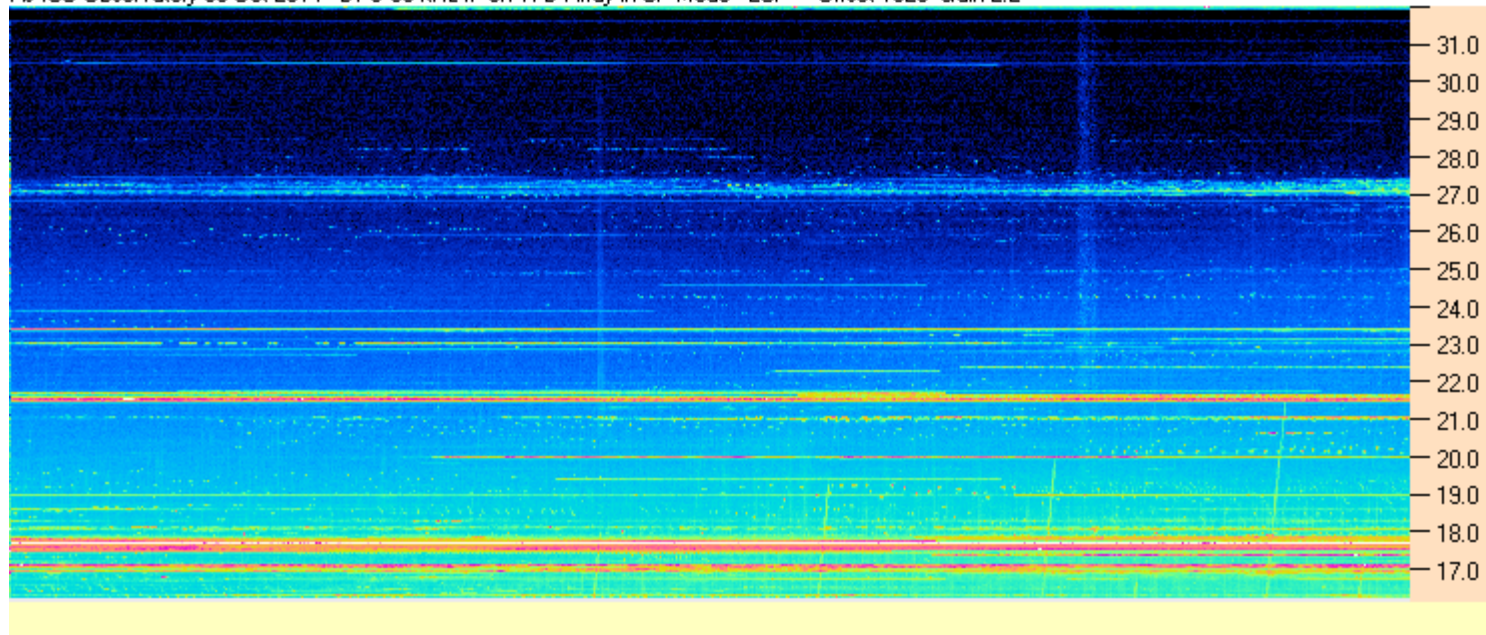


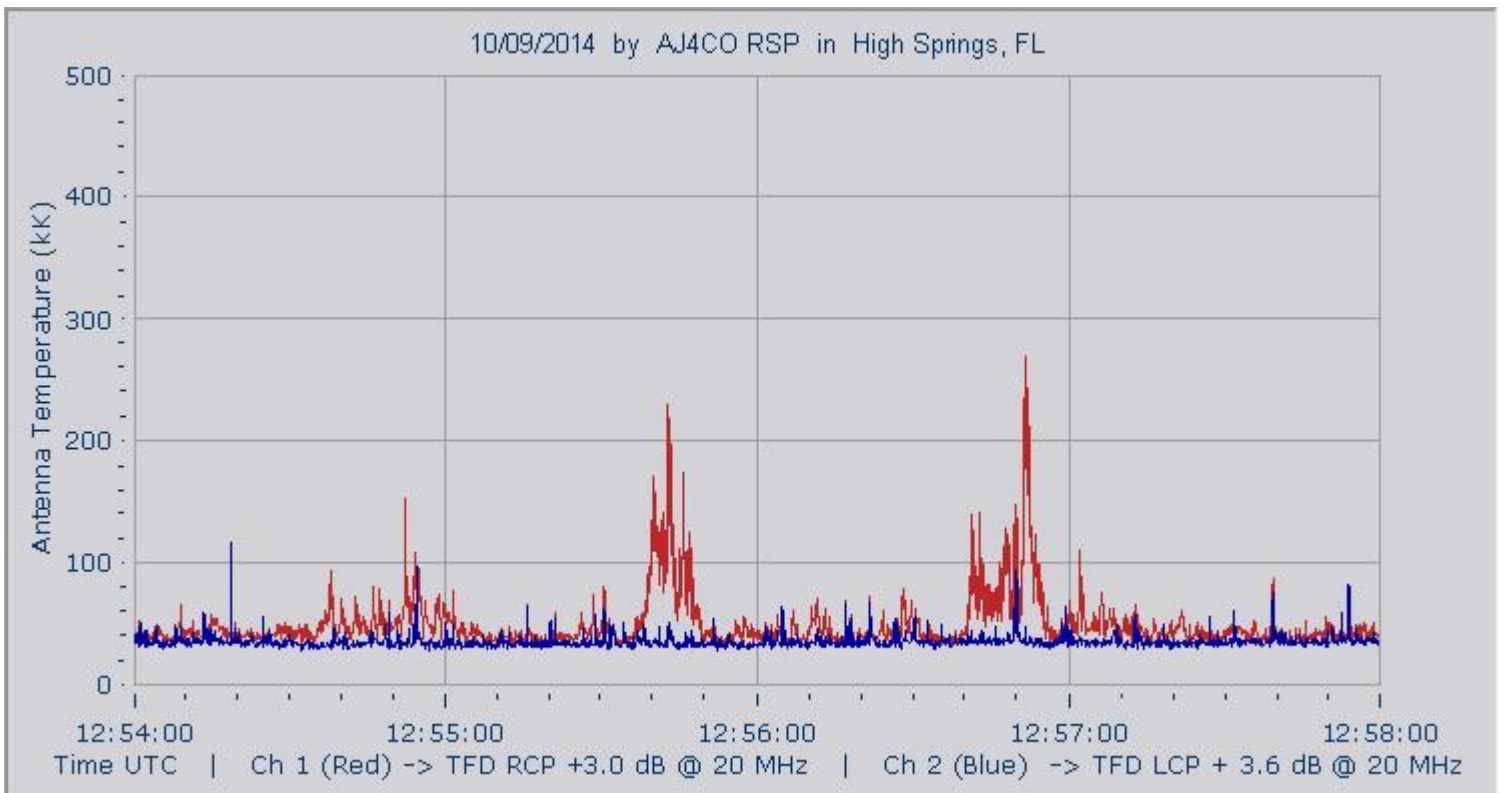
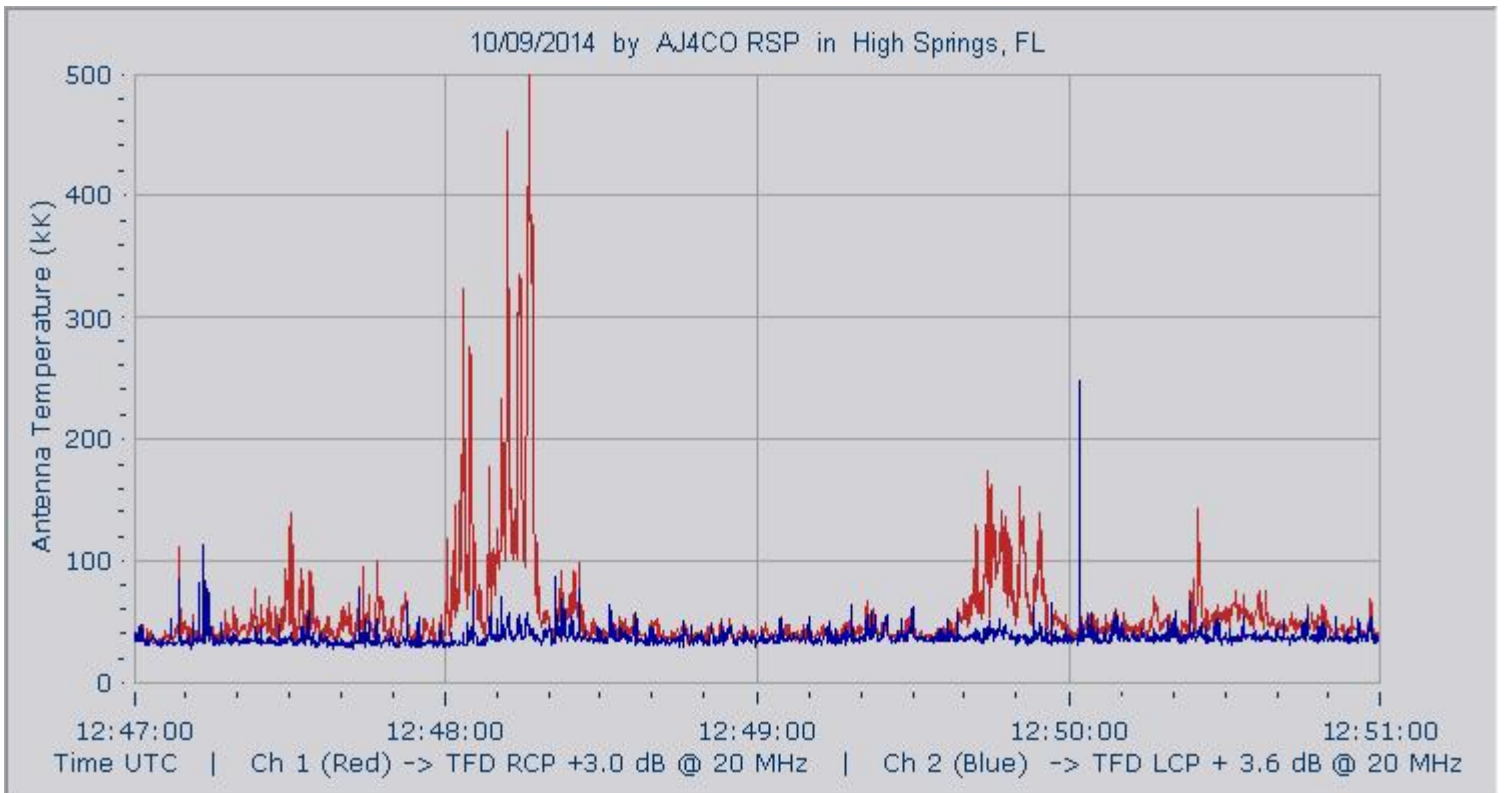


AJ4CO Observatory 09 Oct 2014 - DPS 30 kHz IF on TFD Array in CP Mode - RCP Offset 1825 Gain 2.2



AJ4CO Observatory 09 Oct 2014 - DPS 30 kHz IF on TFD Array in CP Mode - LCP Offset 1825 Gain 2.2





10/09/2014 by AJ4CO RSP in High Springs, FL

