

Subject: [radiojove-data] 06 Oct 2014 non-Io-A

From: Dave Typinski <davetyp@typnet.net>

Date: 10/10/2014 00:34

To: RadioJove-Data <radiojove-data@lists.nasa.gov>

Here's some weak non-Io-A from Monday morning.

RCP dominant L bursting from 18 to 27 MHz. No modulation lanes evident.

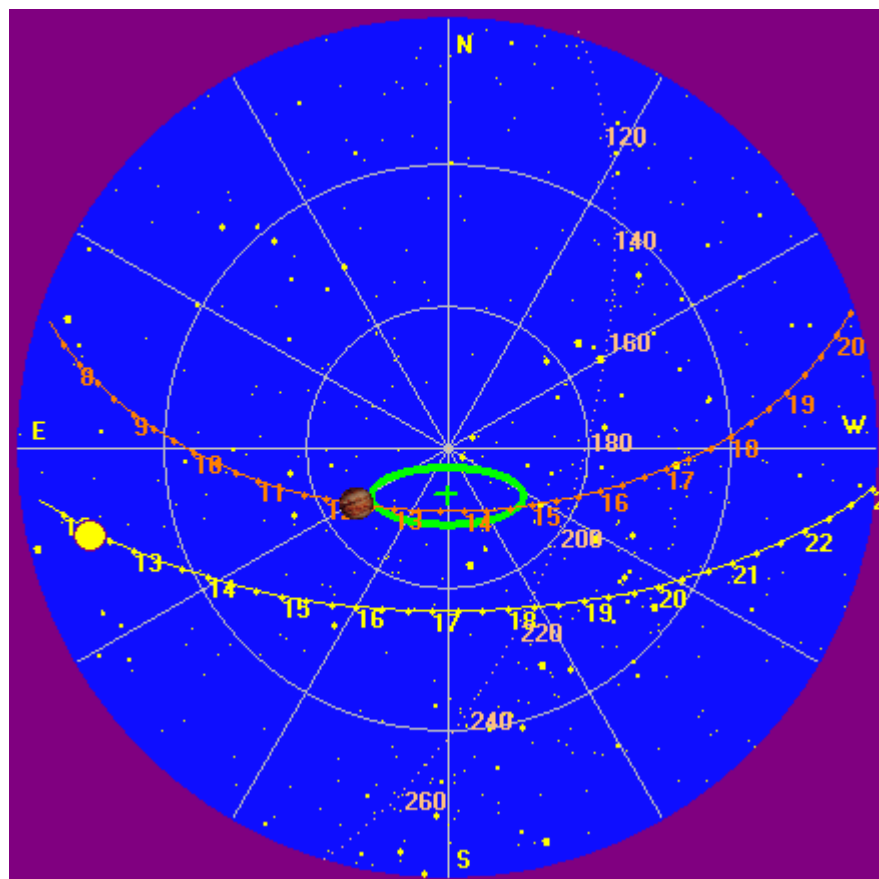
Jupiter was -22° to -16° off axis.

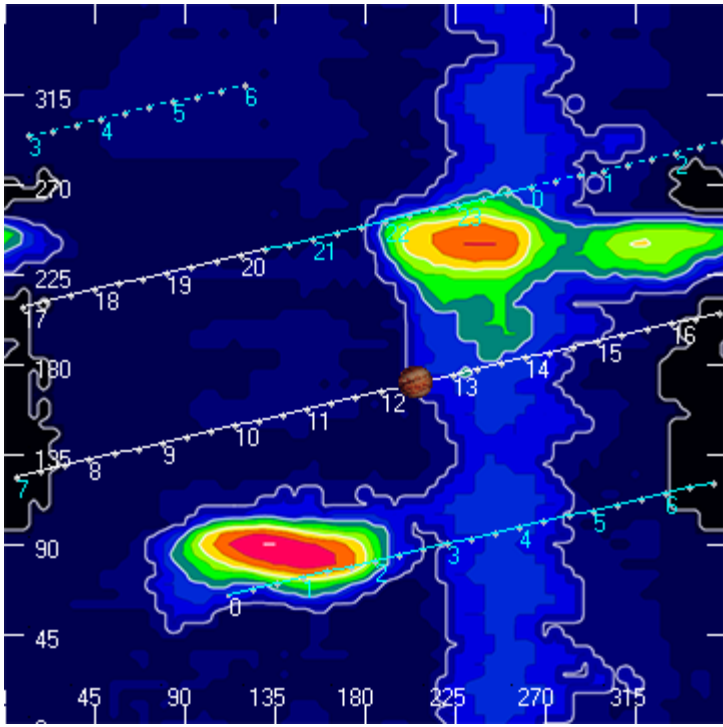
Jupiter was leading the Sun by 56° .

--

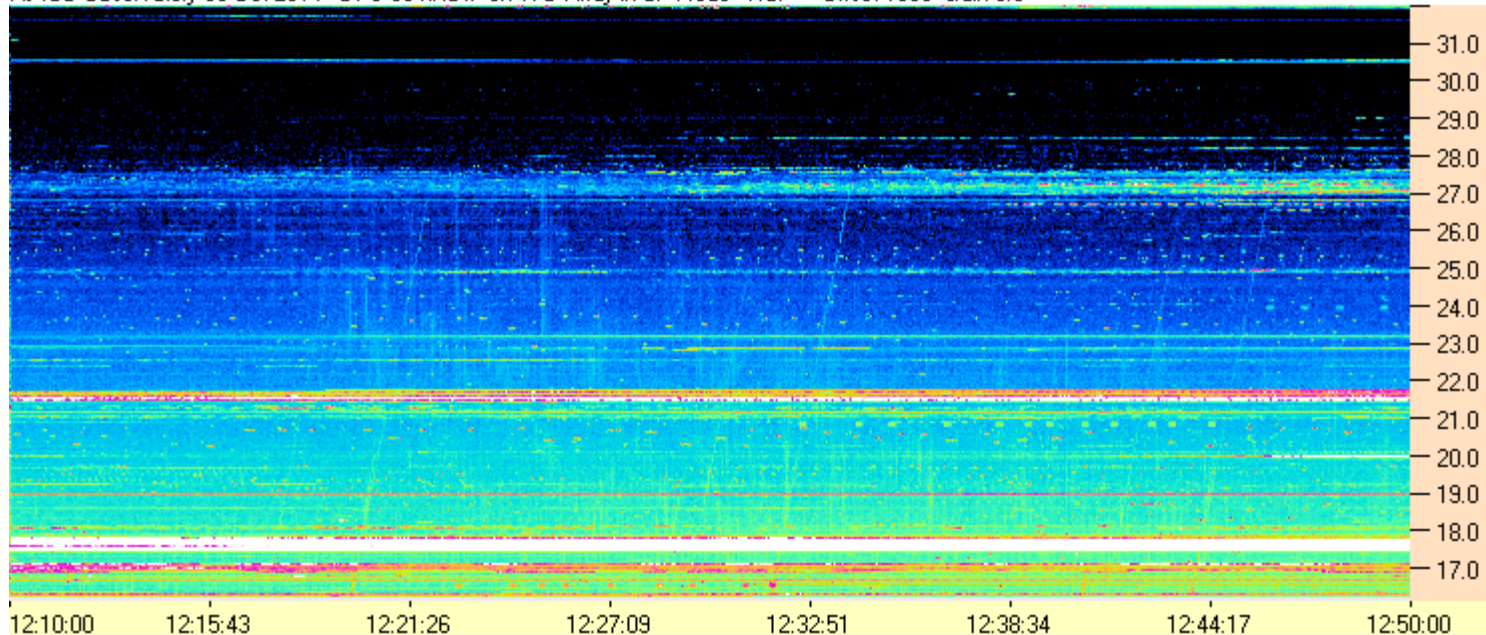
Dave

AJ4CO Observatory 06 Oct 2014





AJ4CO Observatory 06 Oct 2014 - DPS 30 kHz IF on TFD Array in CP Mode - RCP Offset 1850 Gain 3.0



AJ4CO Observatory 06 Oct 2014 - DPS 30 kHz IF on TFD Array in CP Mode - LCP Offset 1850 Gain 3.0

