

**Subject:** [radiojove-data] 01 Oct 2014 Io-A

**From:** Dave Typinski <davetyp@typnet.net>

**Date:** 10/02/2014 19:35

**To:** RadioJove-Data <radiojove-data@lists.nasa.gov>

Adding to Tom's nice report, here's the Io-A from Wednesday morning.

Well, that and some weak line noise right in the middle of the nice Jupiter storm.

RCP dominant L bursting from 16 to 26 MHz. No modulation lanes evident.

Jupiter was  $-17^\circ$  to  $+16^\circ$  off axis.

Jupiter was leading the Sun by  $52^\circ$ .

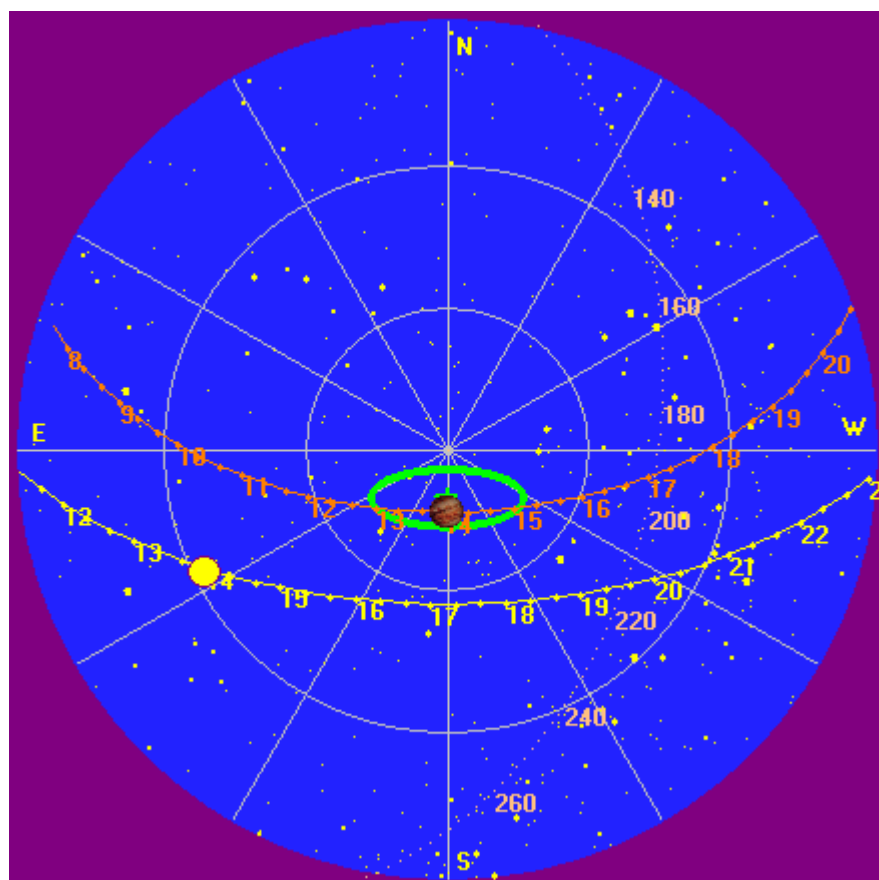
--

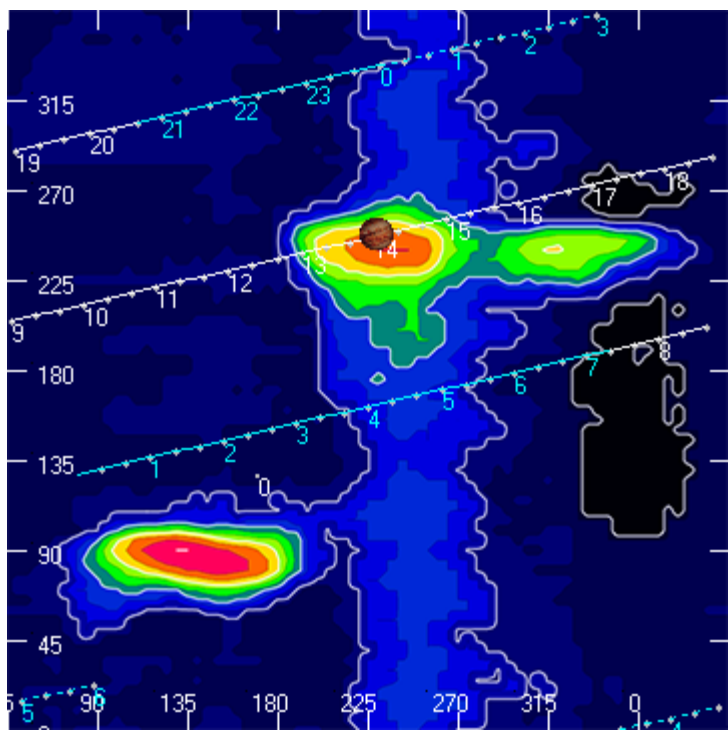
Dave

---

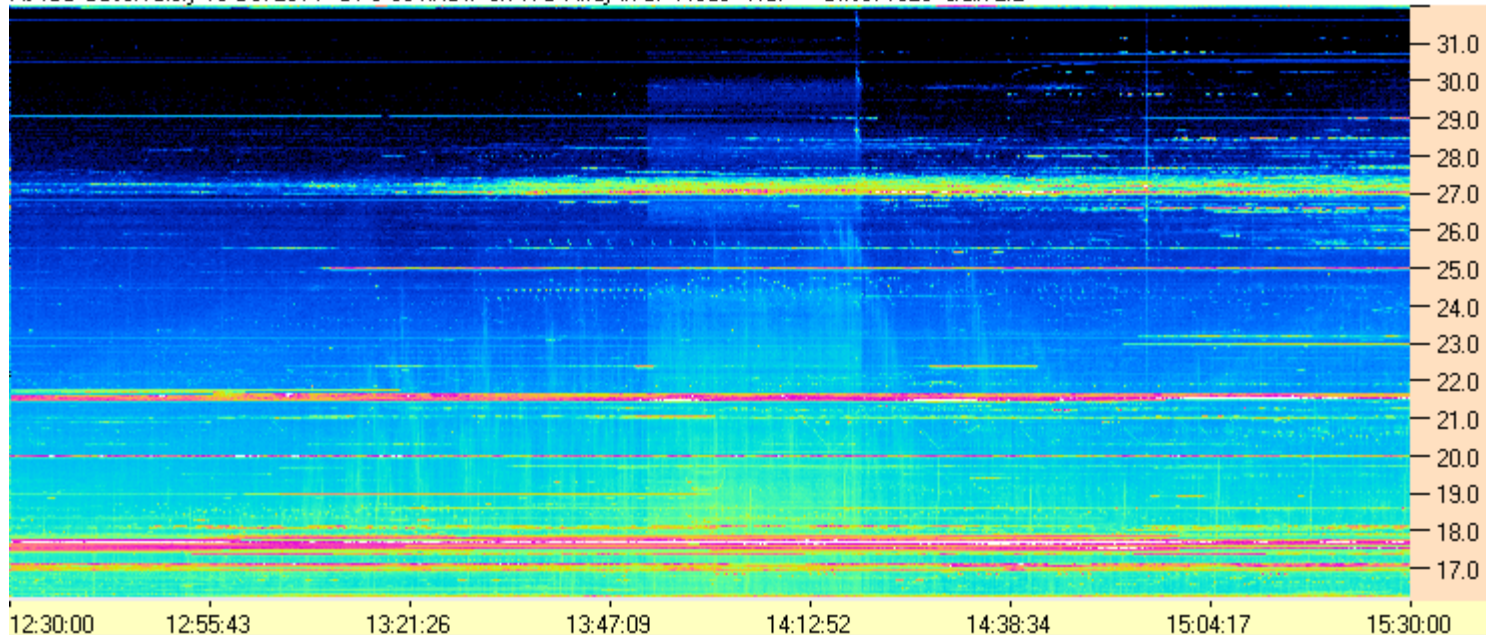
**AJ4CO Observatory 01 Oct 2014**

---





AJ4CO Observatory 10 Oct 2014 - DPS 30 kHz IF on TFD Array in CP Mode - RCP Offset 1825 Gain 2.2



AJ4CO Observatory 10 Oct 2014 - DPS 30 kHz IF on TFD Array in CP Mode - LCP Offset 1825 Gain 2.2

