

**Subject:** [radiojove-data] 10 Sep 2014 non-Io-A

**From:** Dave Typinski <davetyp@typnet.net>

**Date:** 09/11/2014 21:29

**To:** RadioJove-Data <radiojove-data@lists.nasa.gov>

Here's some weak non-Io-A from Wednesday morning.

RCP dominant L bursting from 17 to 23 MHz. No modulation lanes evident.

Jupiter was  $-28^\circ$  to  $-20^\circ$  off axis.

Jupiter was leading the Sun by  $36^\circ$ .

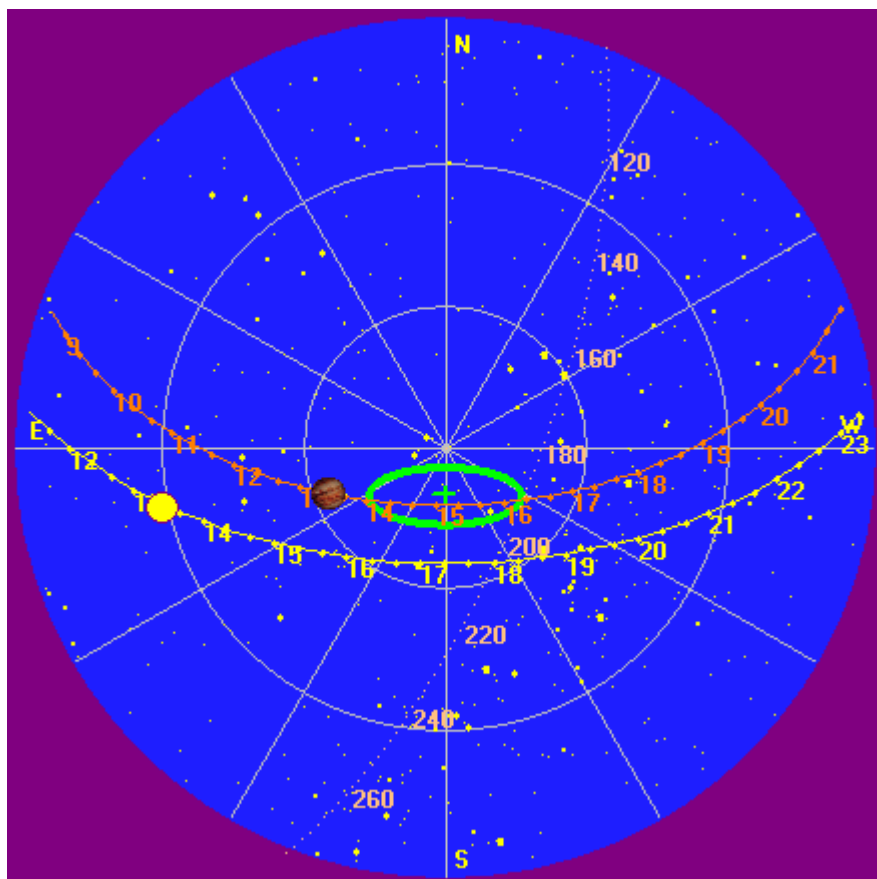
--

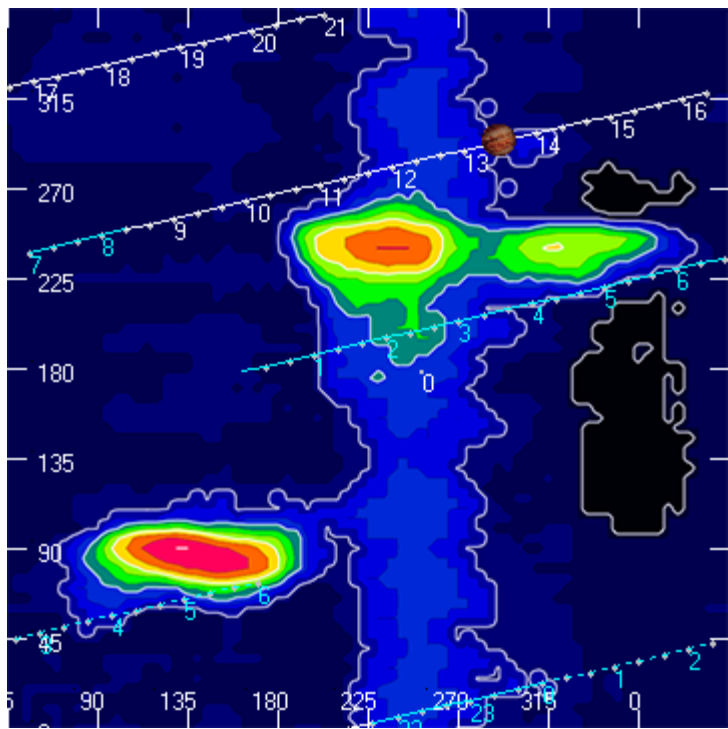
Dave

---

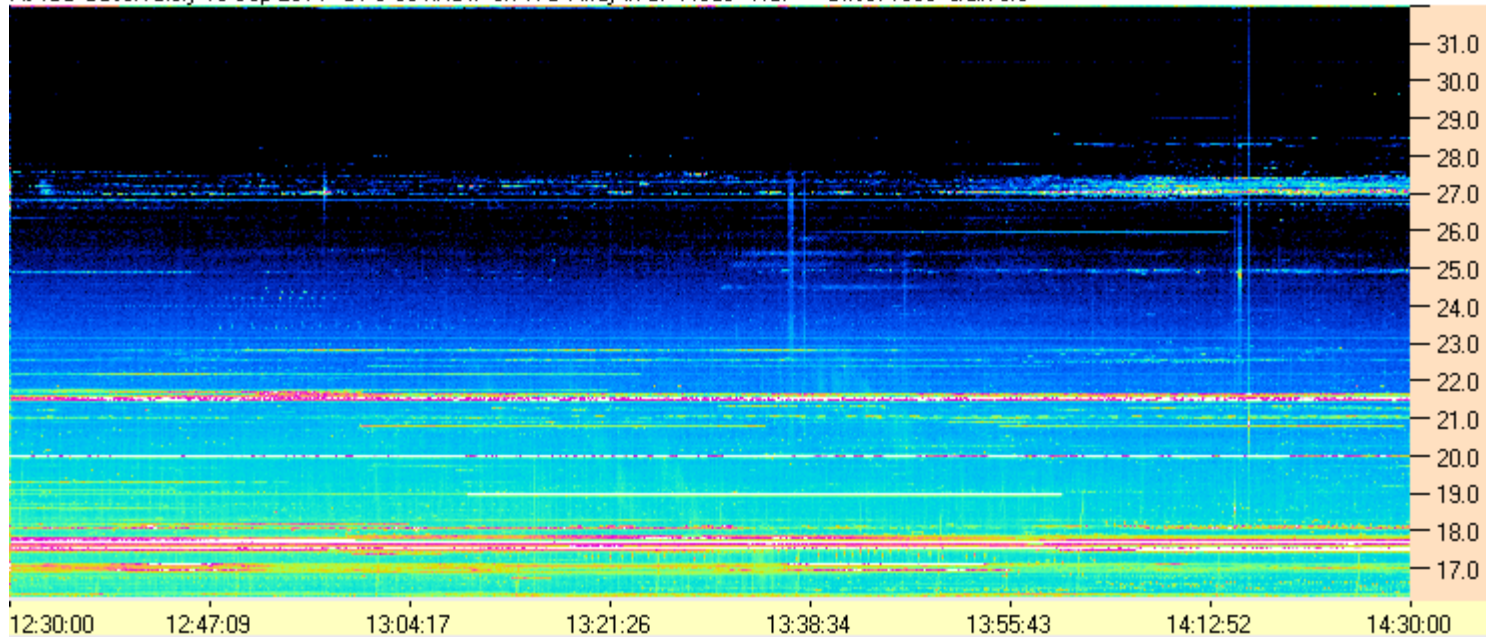
**AJ4CO Observatory 10 Sep 2014**

---





AJ4CO Observatory 10 Sep 2014 - DPS 30 kHz IF on TFD Array in CP Mode - RCP Offset 1900 Gain 3.0



AJ4CO Observatory 10 Sep 2014 - DPS 30 kHz IF on TFD Array in CP Mode - LCP Offset 1900 Gain 3.0

