

Subject: [radiojove-data] 09 Sep 2014 non-Io-A

From: Dave Typinski <davetyp@typnet.net>

Date: 09/10/2014 23:03

To: RadioJove-Data <radiojove-data@lists.nasa.gov>

After the Io-B, some more non-Io-A showed up Tuesday afternoon.

RCP dominant L bursting from 16 to 23 MHz. No modulation lanes evident.

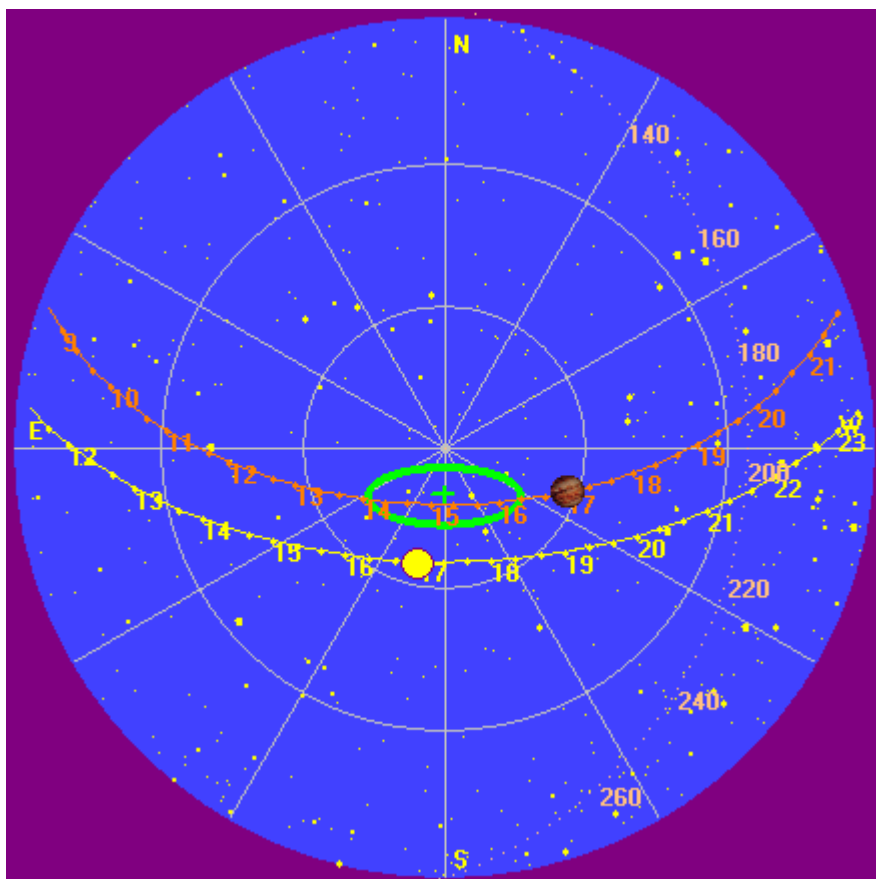
Jupiter was +20° to +30° off axis.

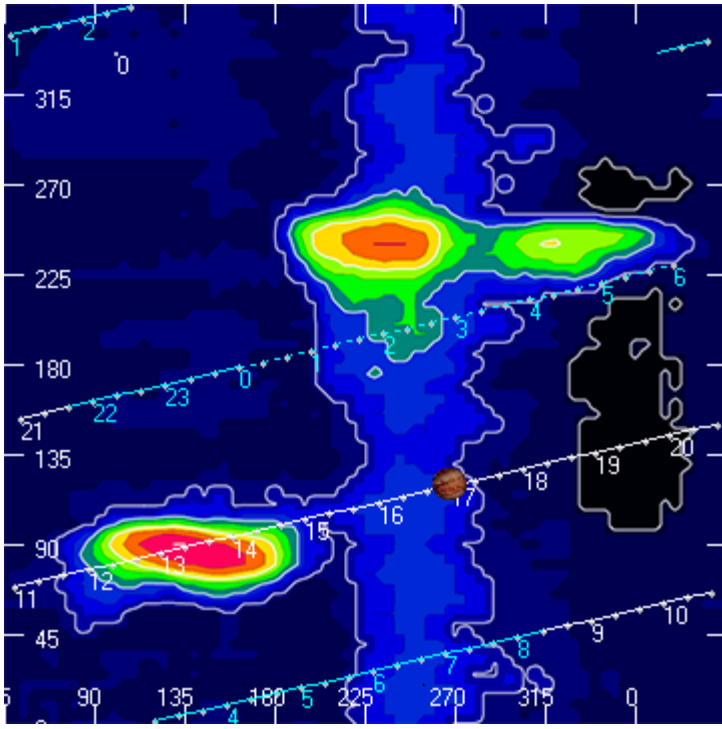
Jupiter was leading the Sun by 35°.

--

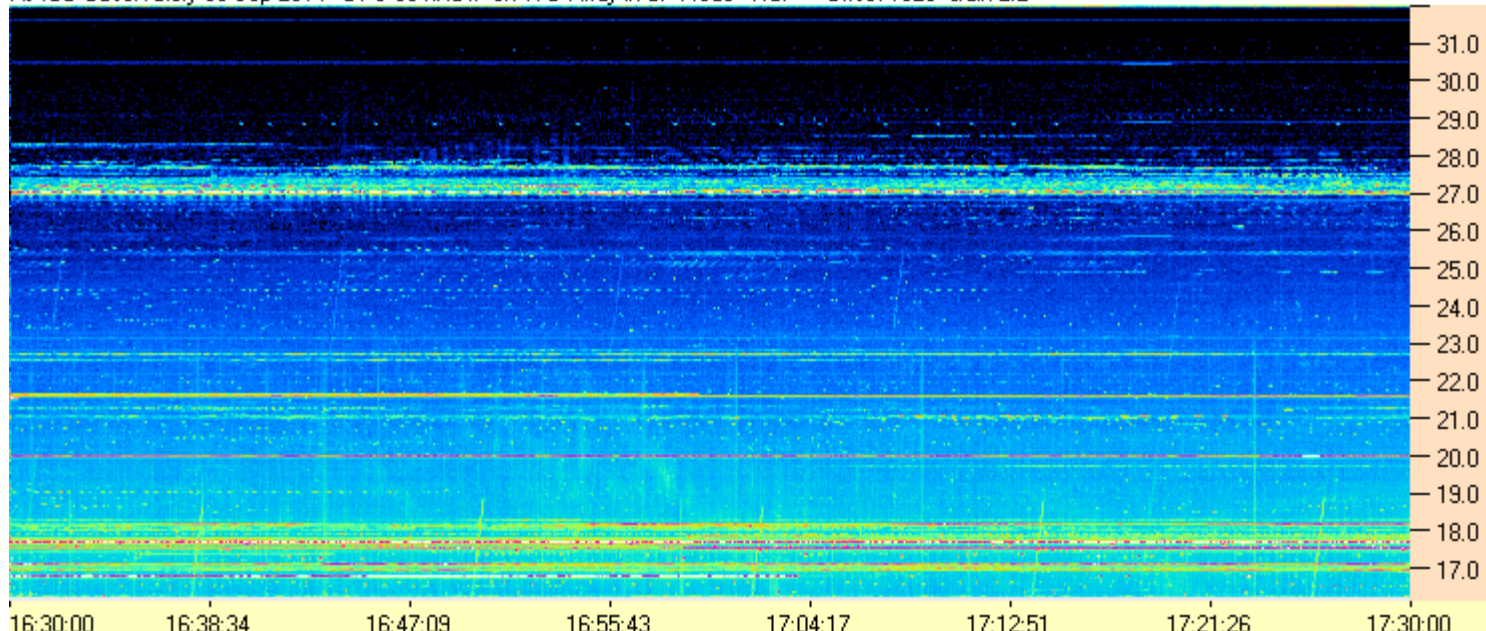
Dave

AJ4CO Observatory 09 Sep 2014





AJ4CO Observatory 09 Sep 2014 - DPS 30 kHz IF on TFD Array in CP Mode - RCP Offset 1825 Gain 2.2



AJ4CO Observatory 09 Sep 2014 - DPS 30 kHz IF on TFD Array in CP Mode - LCP Offset 1825 Gain 2.2

