

**Subject:** [radiojove-data] 05 Sep 2014 non-Io-A

**From:** Dave Typinski <davetyp@typnet.net>

**Date:** 09/06/2014 22:54

**To:** RadioJove-Data <radiojove-data@lists.nasa.gov>

Here's some more non-Io-A, this one from Friday morning.

RCP dominant L bursting from 18 to 25 MHz. No modulation lanes evident.

Jupiter was  $-49^\circ$  to  $-22^\circ$  off axis.

Jupiter was leading the Sun by  $32^\circ$ .

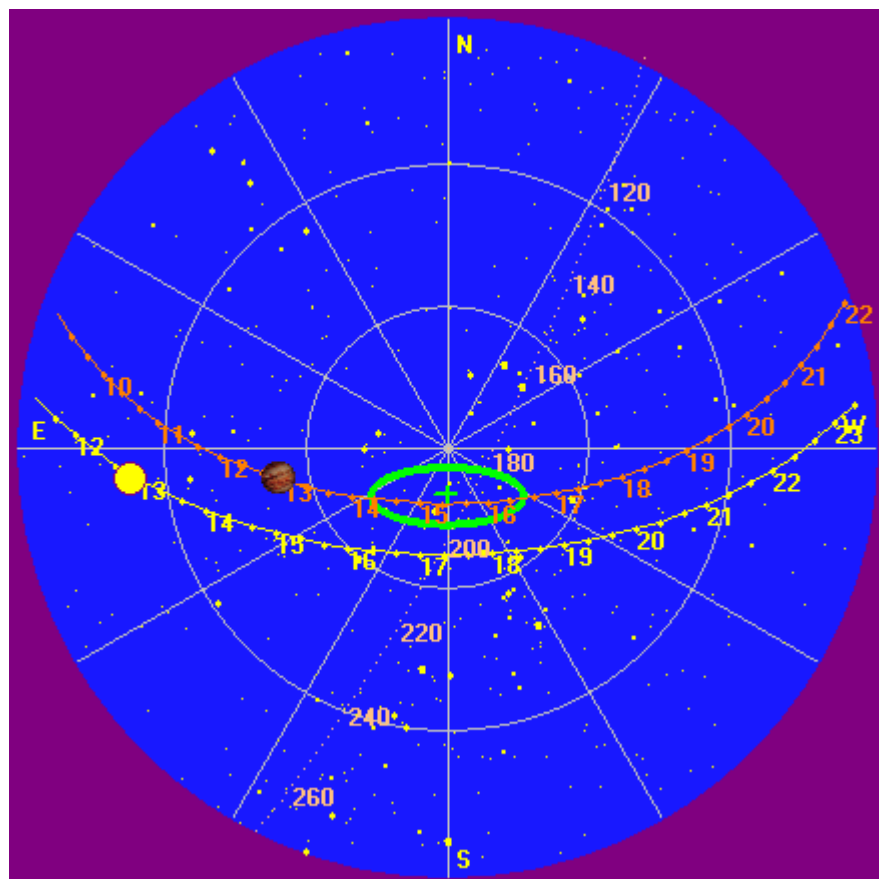
--

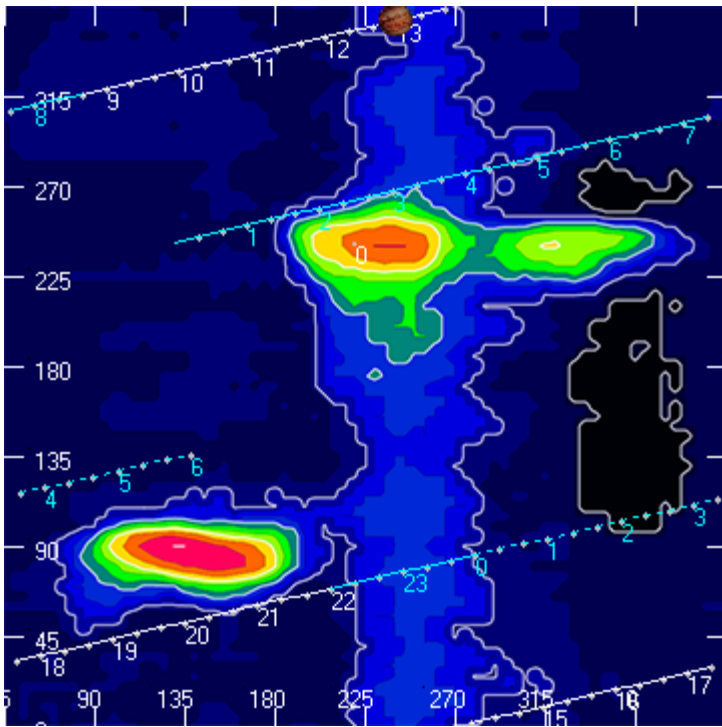
Dave

---

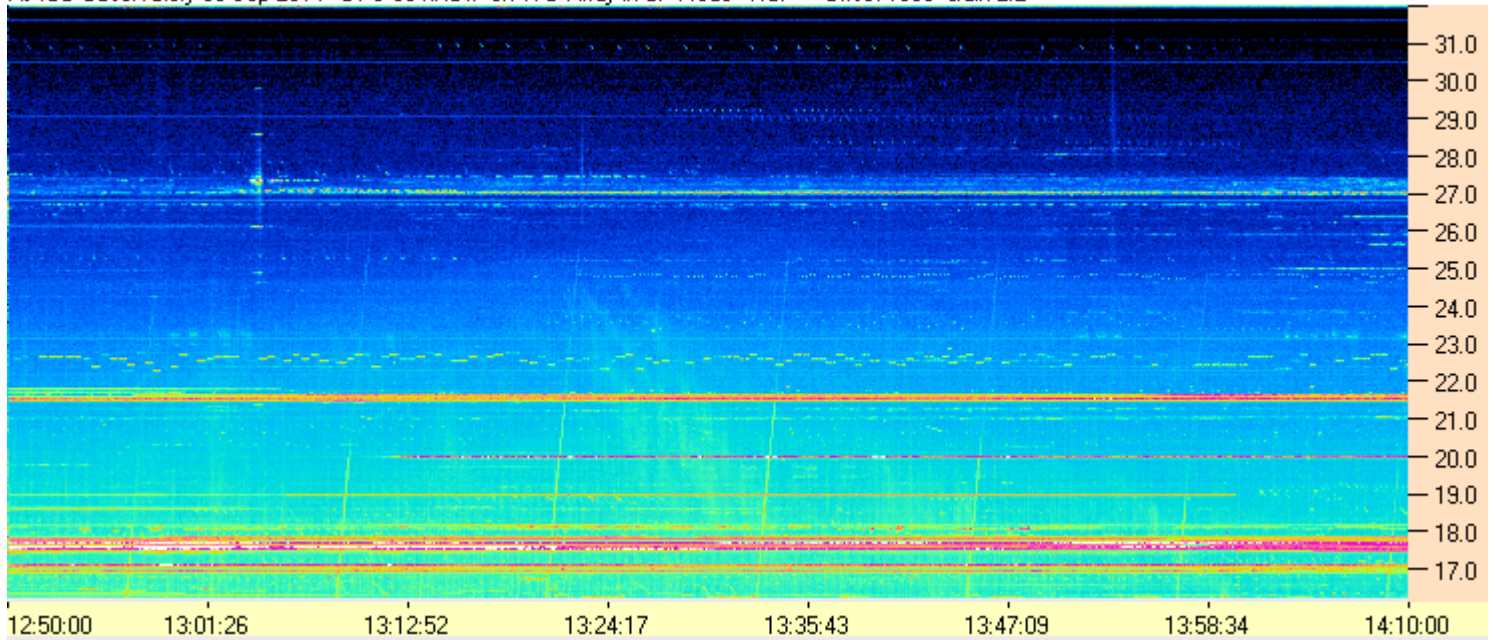
**AJ4CO Observatory 05 Sep 2014**

---





AJ4CO Observatory 05 Sep 2014 - DPS 30 kHz IF on TFD Array in CP Mode - RCP Offset 1800 Gain 2.2



AJ4CO Observatory 05 Sep 2014 - DPS 30 kHz IF on TFD Array in CP Mode - LCP Offset 1800 Gain 2.2

