

Subject: [radiojove-data] 17 Jun 2014 non-Io-A

From: Dave Typinski <davetyp@typnet.net>

Date: 06/23/2014 06:36

To: RadioJove-Data <radiojove-data@lists.nasa.gov>

Here's some weak non-Io-A from June 17th.

Emission was RCP dominant, L bursting just above background, visible from 18 MHz to 22 MHz.

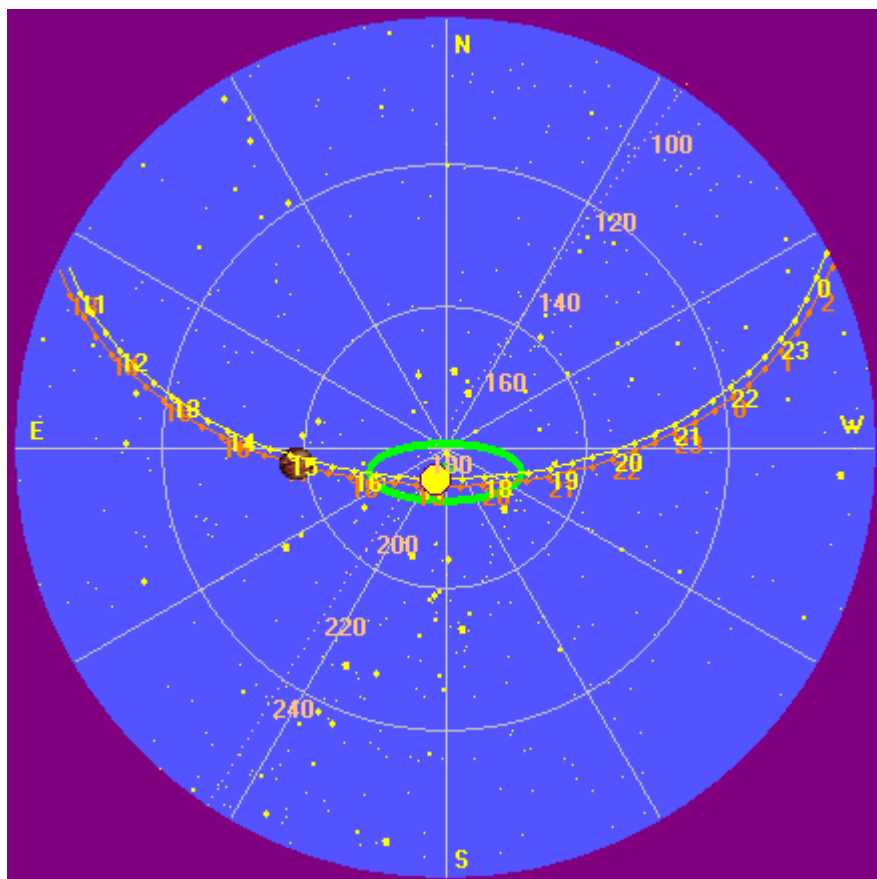
Jupiter was 32° to 30° off axis.

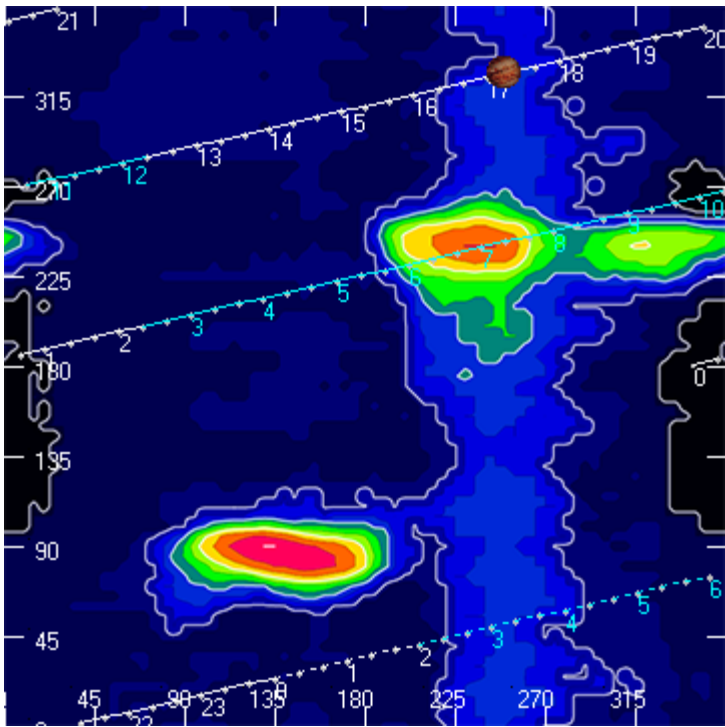
Jupiter was trailing the Sun by 27°.

--

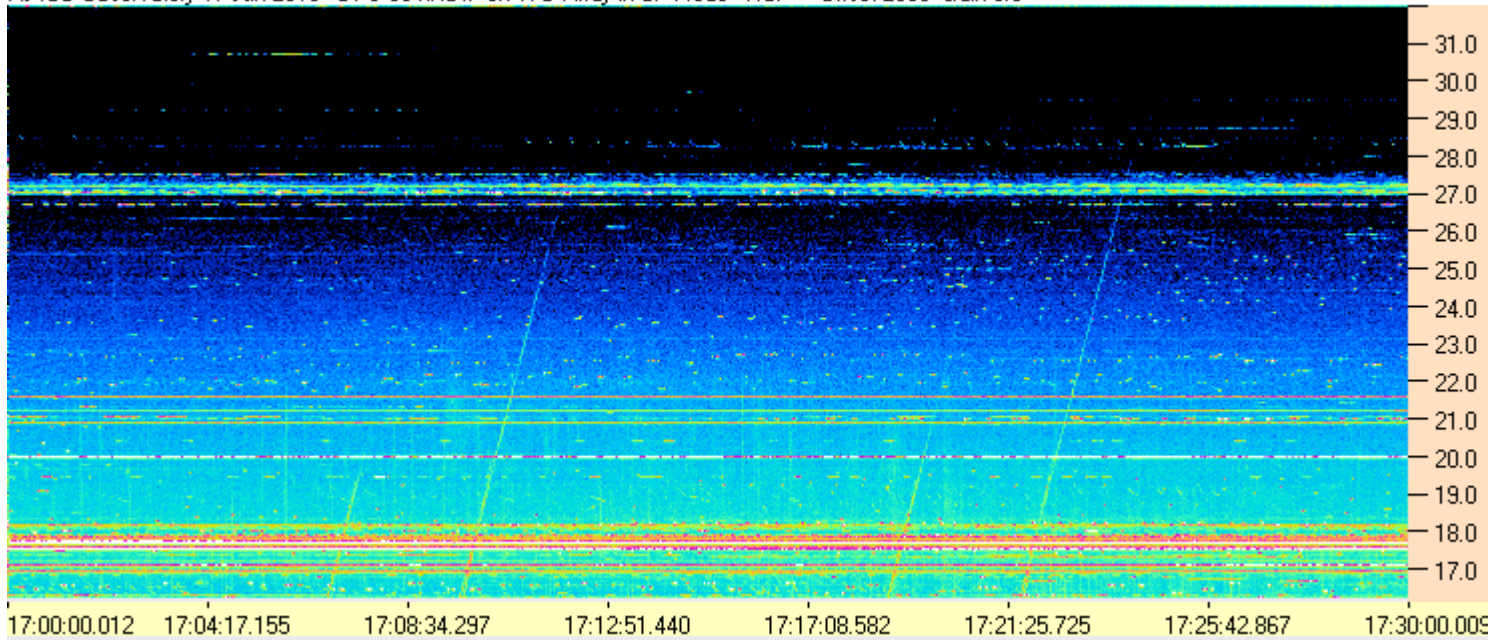
Dave

AJ4CO Observatory 17 Jun 2014





AJ4CO Observatory 17 Jun 2013 - DPS 30 kHz IF on TFD Array in CP Mode - RCP Offset 2050 Gain 3.0



AJ4CO Observatory 17 Jun 2013 - DPS 30 kHz IF on TFD Array in CP Mode - LCP Offset 2050 Gain 3.0

