

**Subject:** [radiojove-data] 22 Mar 2014 non-Io-A

**From:** Dave Typinski <davetyp@typnet.net>

**Date:** 03/25/2014 22:11

**To:** RadioJove-Data <radiojove-data@lists.nasa.gov>

Here's some brief, weak non-Io-A from Saturday morning. Gotta take what we can get these days.

A few L bursts from 19 to 24 MHz, RCP, no modulation lanes.

Jupiter was 7° off axis.

Jupiter was trailing the Sun by 100°.

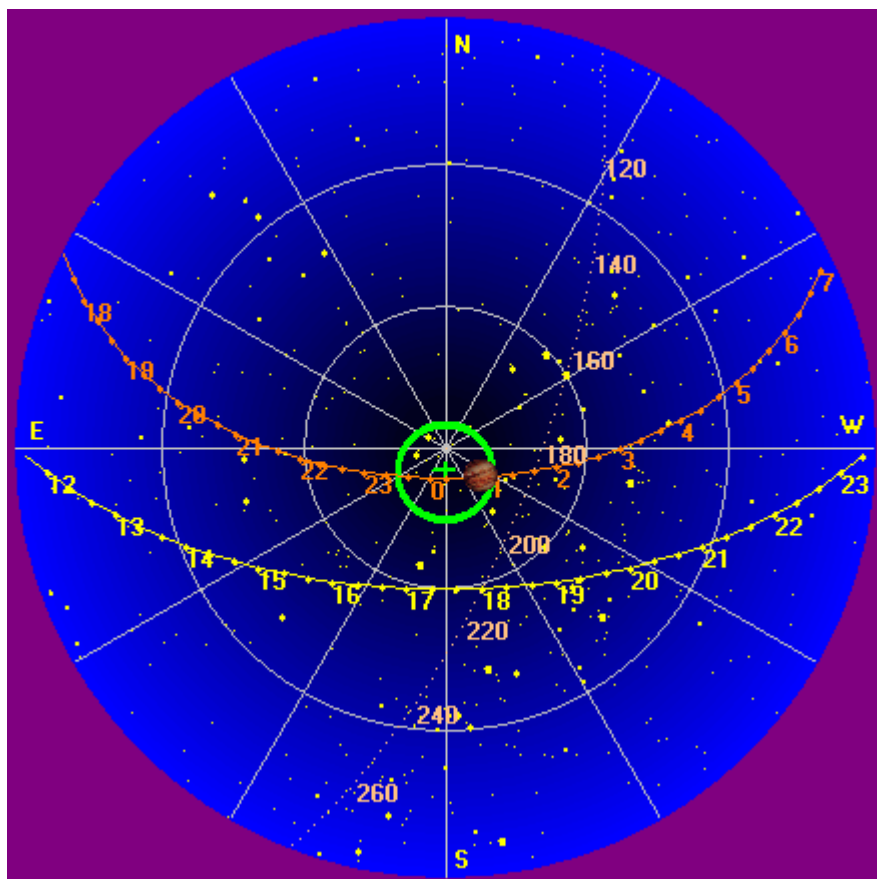
--

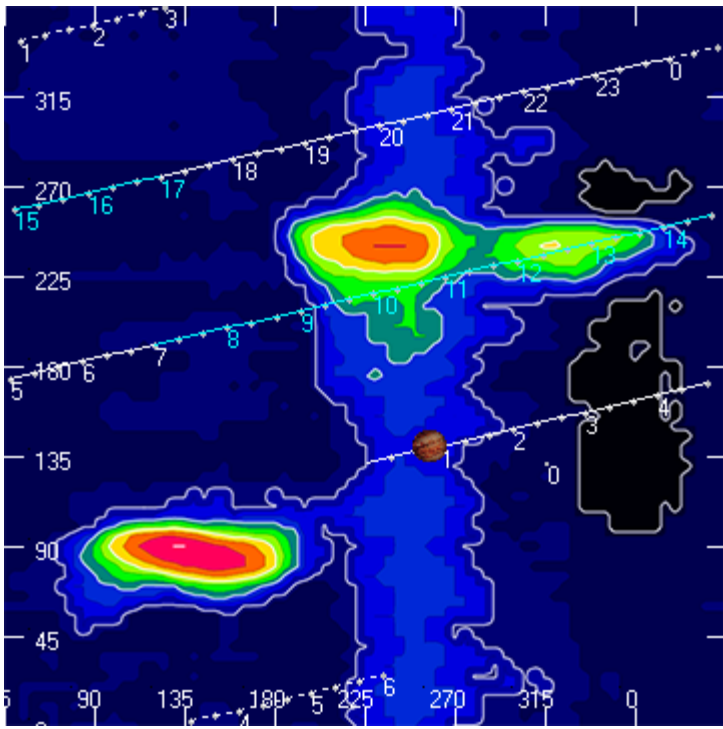
Dave

---

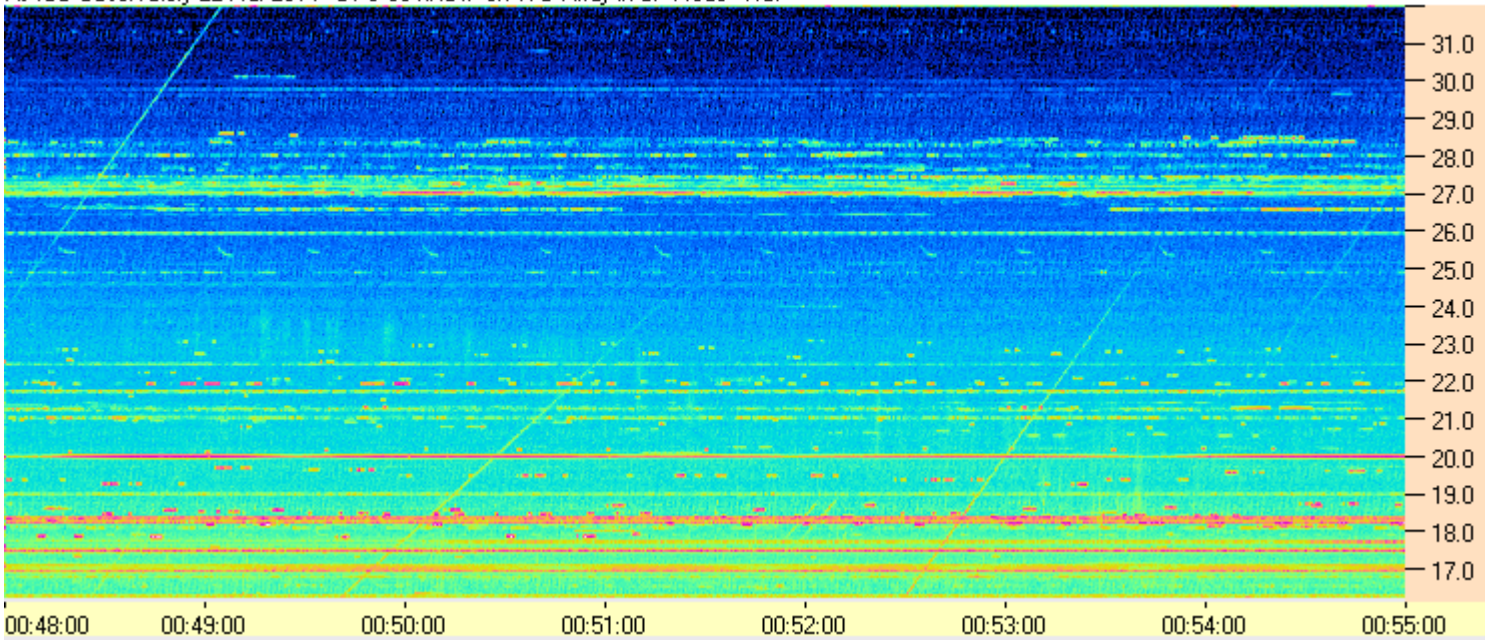
**AJ4CO Observatory, 22 Mar 2014**

---





AJ4CO Observatory 22 Mar 2014 - DPS 60 kHz IF on TFD Array in CP Mode - RCP



AJ4CO Observatory 22 Mar 2014 - DPS 60 kHz IF on TFD Array in CP Mode - LCP

