

**Subject:** [radiojove-data] 14 Mar 2014 non-Io-B

**From:** Dave Typinski <davetyp@typnet.net>

**Date:** 03/16/2014 21:50

**To:** RadioJove-Data <radiojove-data@lists.nasa.gov>

Here's some brief, weak non-Io-B from Friday morning.

A few L bursts from 17 to 20 MHz, RCP, no modulation lanes.

Jupiter was 8° to 10° off axis.

Jupiter was trailing the Sun by 107°.

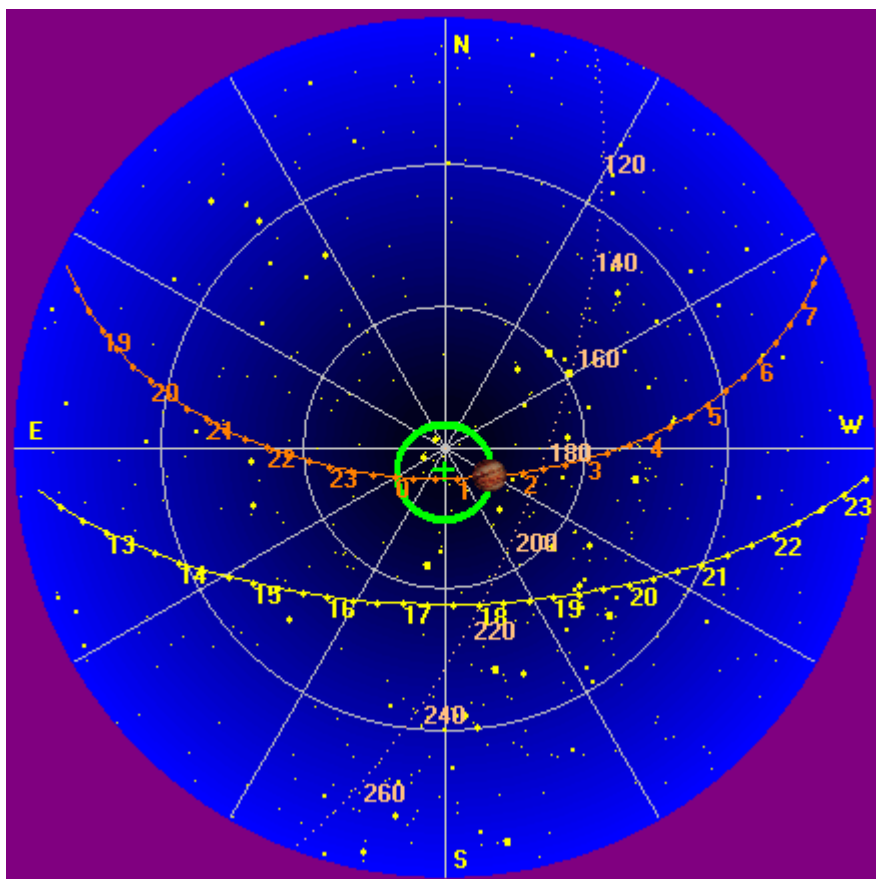
--

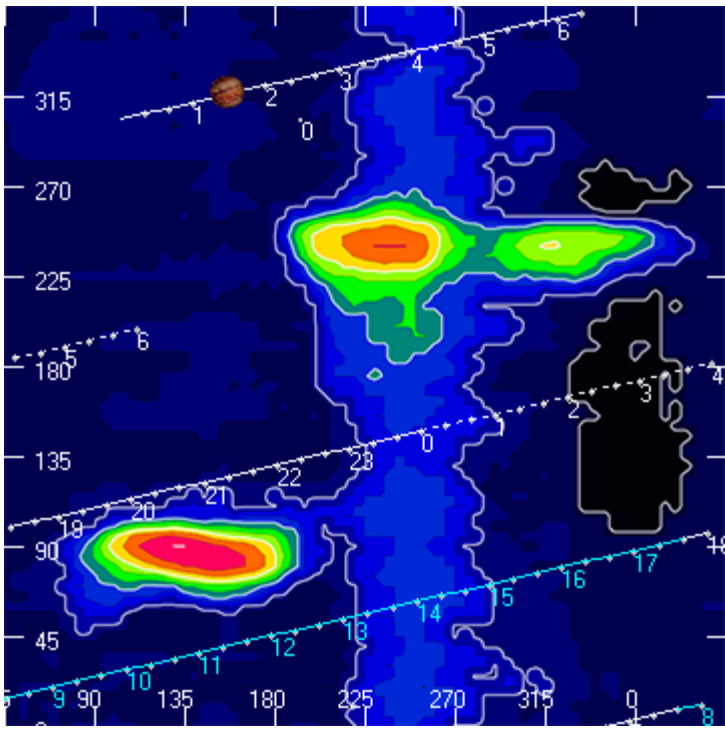
Dave

---

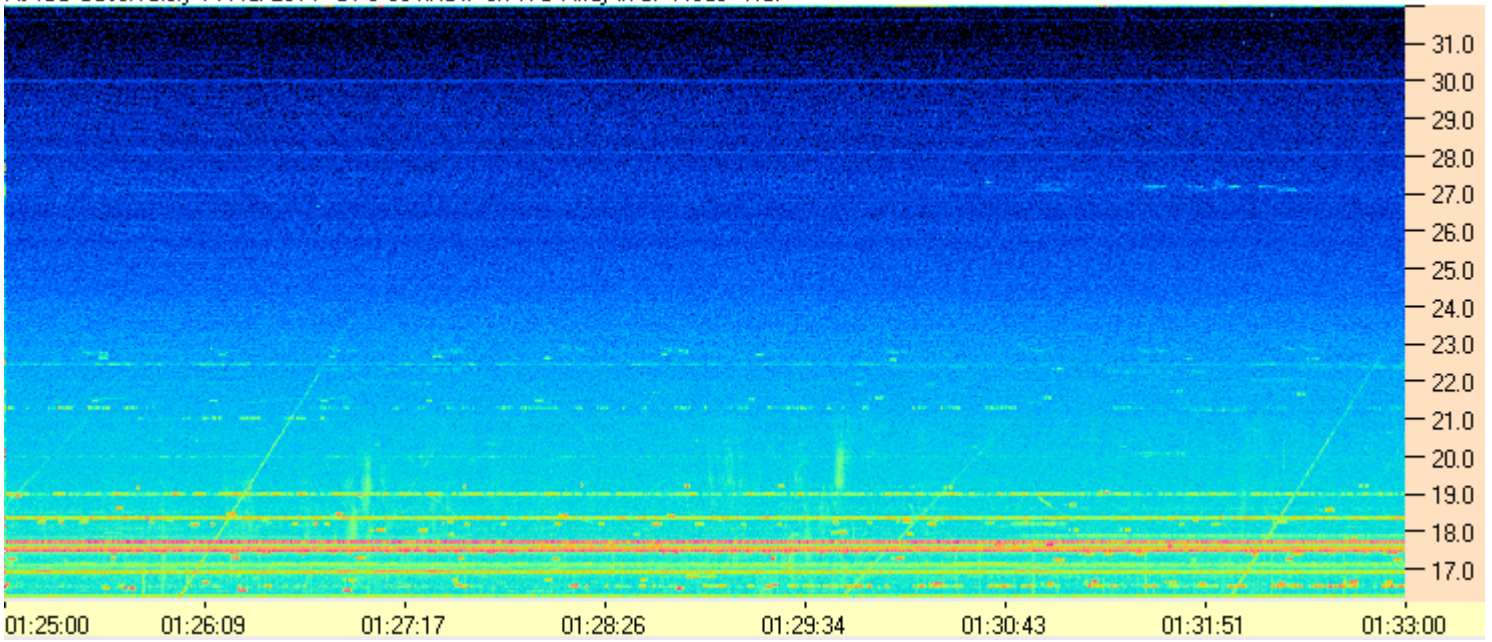
**AJ4CO Observatory, 14 Mar 2014**

---





AJ4CO Observatory 14 Mar 2014 - DPS 60 kHz IF on TFD Array in CP Mode - RCP



AJ4CO Observatory 14 Mar 2014 - DPS 60 kHz IF on TFD Array in CP Mode - LCP

