

Subject: [radiojove-data] 21 Feb 2014 non-Io-C

From: Dave Typinski <davetyp@typnet.net>

Date: 02/23/2014 11:42

To: RadioJove-Data <radiojove-data@lists.nasa.gov>

Here's some Io-C from Friday morning.

RCP emission observed from 16 to 18 MHz. No modulation lanes evident.

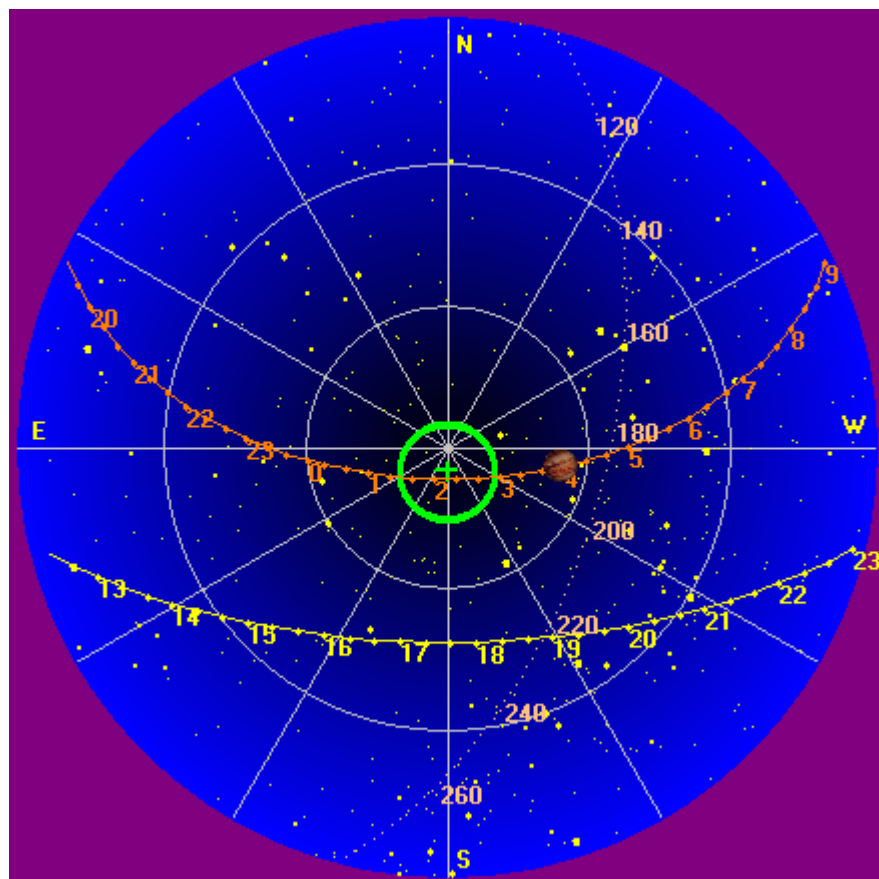
Jupiter was 22° to 25° off axis.

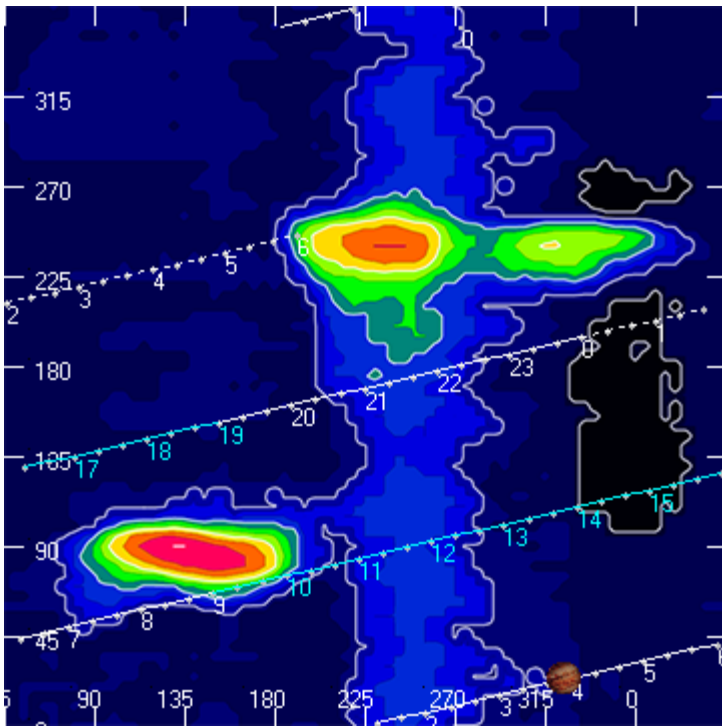
Jupiter was trailing the Sun by 128°.

--

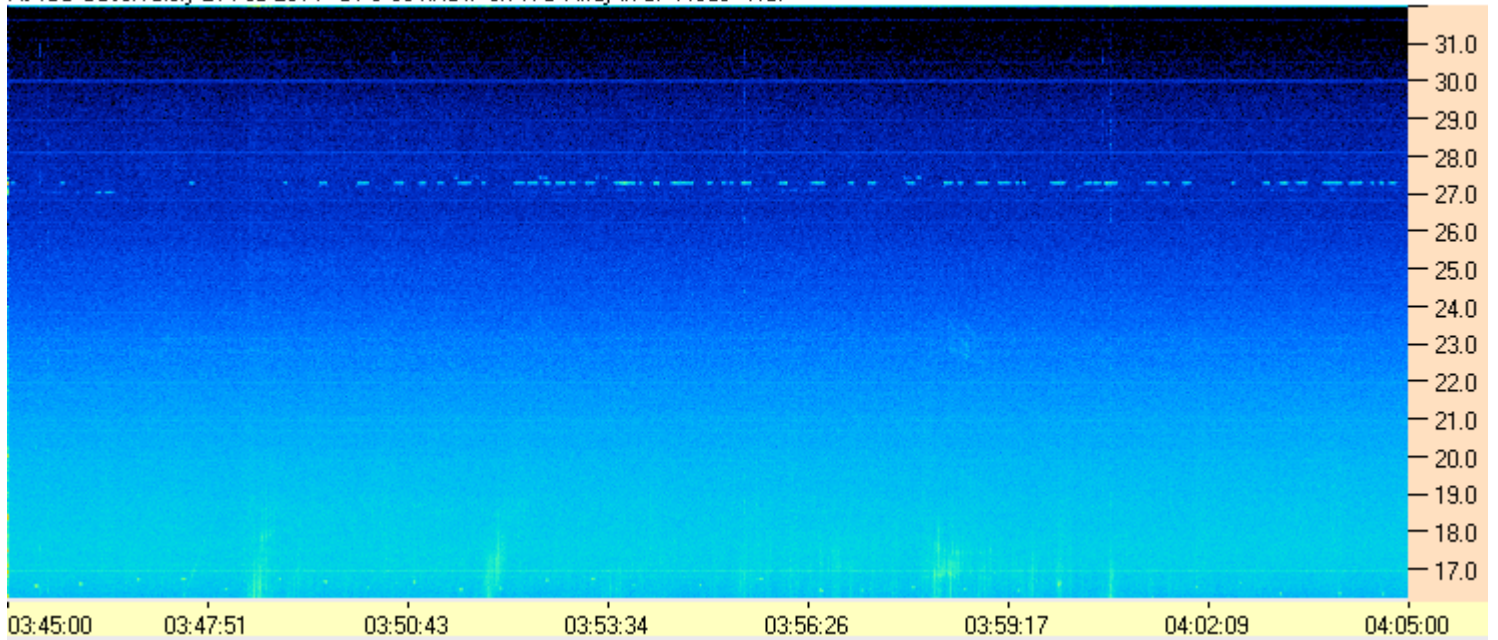
Dave

AJ4CO Observatory, 21 Feb 2014





AJ4CO Observatory 21 Feb 2014 - DPS 60 kHz IF on TFD Array in CP Mode - RCP



AJ4CO Observatory 21 Feb 2014 - DPS 60 kHz IF on TFD Array in CP Mode - LCP

