

Subject: [radiojove-data] 20 Feb 2014 non-Io-A

From: Dave Typinski <davetyp@typnet.net>

Date: 02/23/2014 11:43

To: RadioJove-Data <radiojove-data@lists.nasa.gov>

Here's a little bit more of Tom's non-Io-A from Thursday morning, somewhat earlier than Tom's observation since we're about 1.6 hours east of Tom.

RCP emission observed from 16 to 23 MHz. No modulation lanes evident.

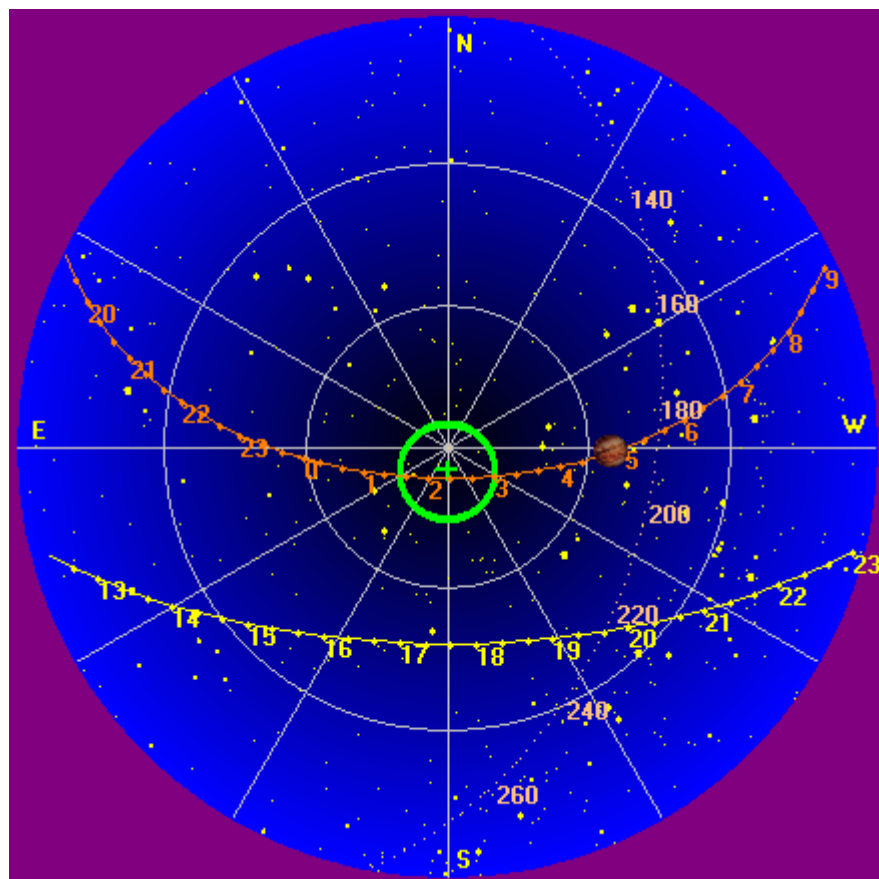
Jupiter was 32° to 36° off axis.

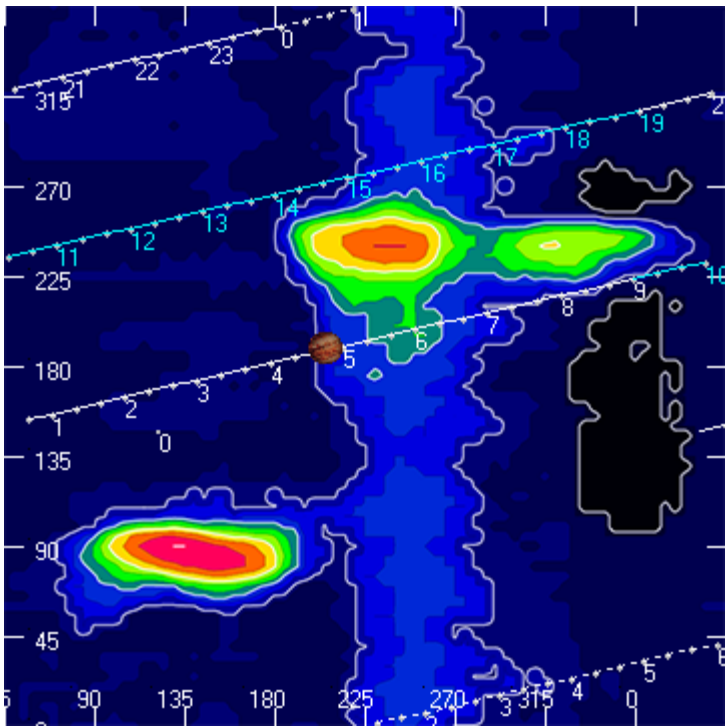
Jupiter was trailing the Sun by 129° .

--

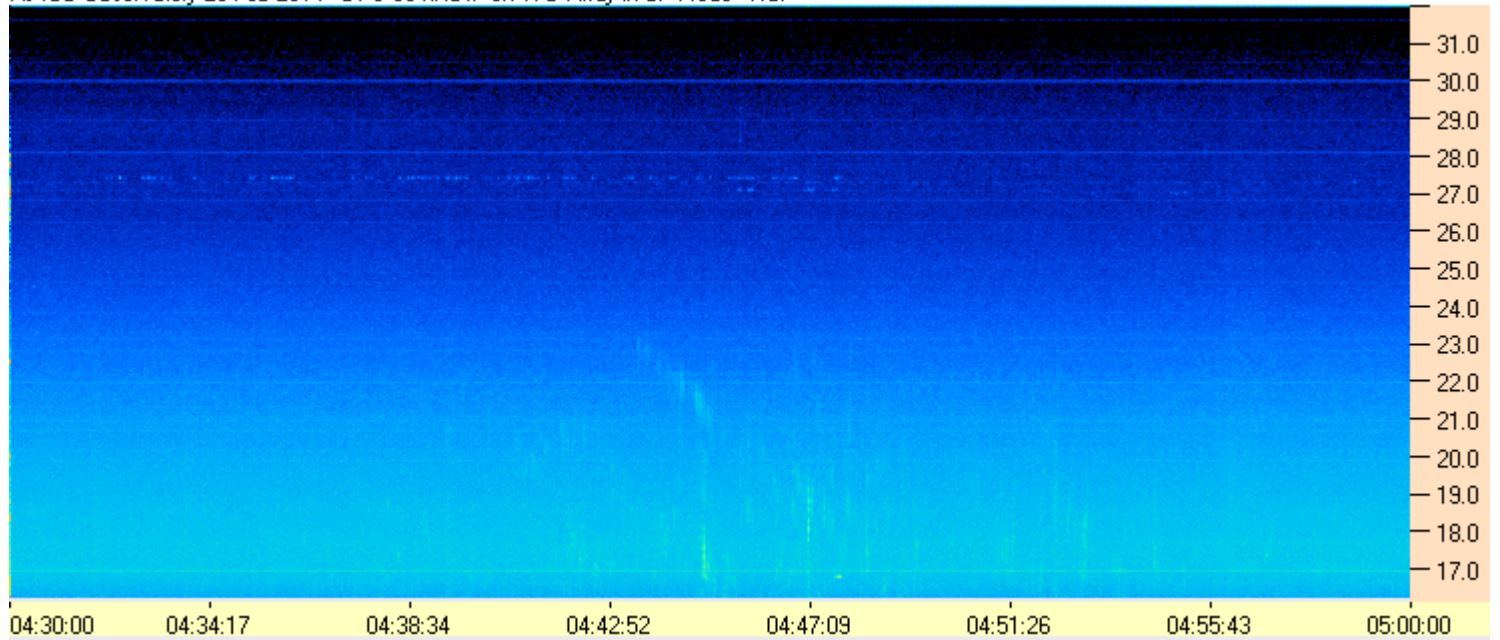
Dave

AJ4CO Observatory, 20 Feb 2014





AJ4CO Observatory 20 Feb 2014 - DPS 60 kHz IF on TFD Array in CP Mode - RCP



AJ4CO Observatory 20 Feb 2014 - DPS 60 kHz IF on TFD Array in CP Mode - LCP

