

**Subject:** [radiojove-data] 12 Feb 2014 non-Io-B

**From:** Dave Typinski <davetyp@typnet.net>

**Date:** 02/13/2014 18:25

**To:** RadioJove-Data <radiojove-data@lists.nasa.gov>

Here's some low freq non-Io-B from Wednesday morning.

LCP L bursts; emission observed from 16 to 18 MHz.

Jupiter was 32° to 38° off axis.

Jupiter was trailing the Sun by 138°.

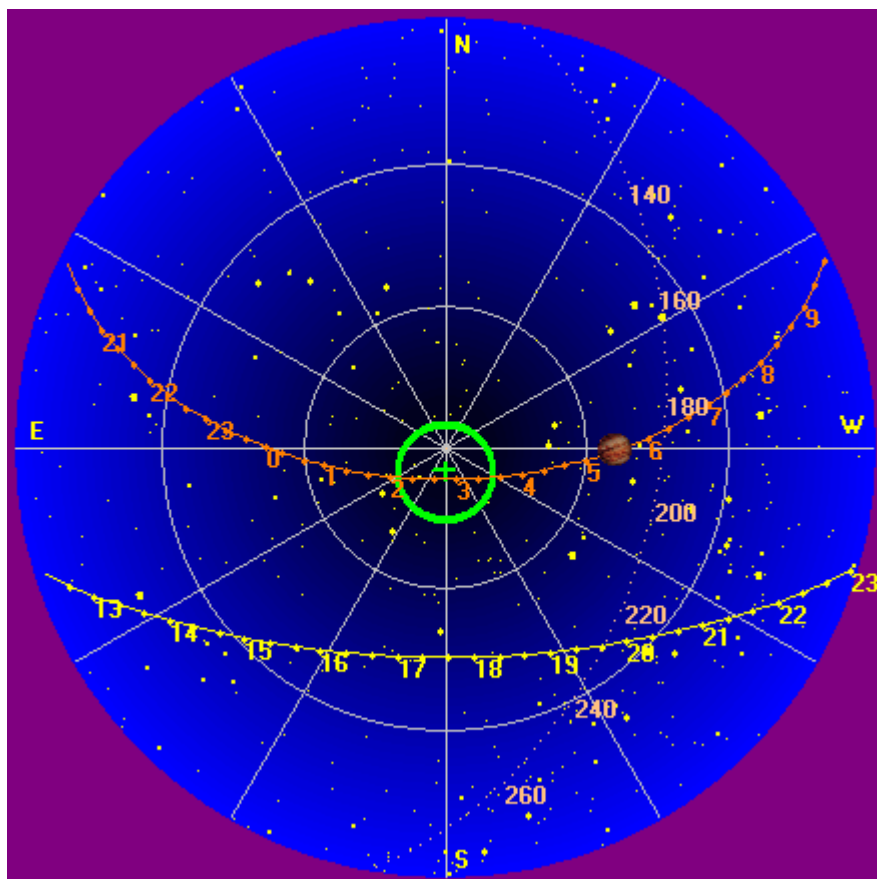
--

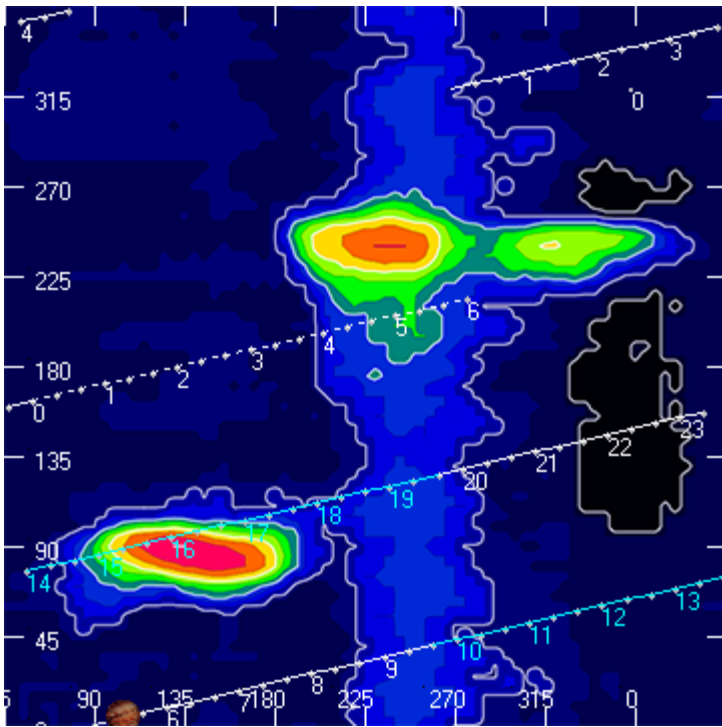
Dave

---

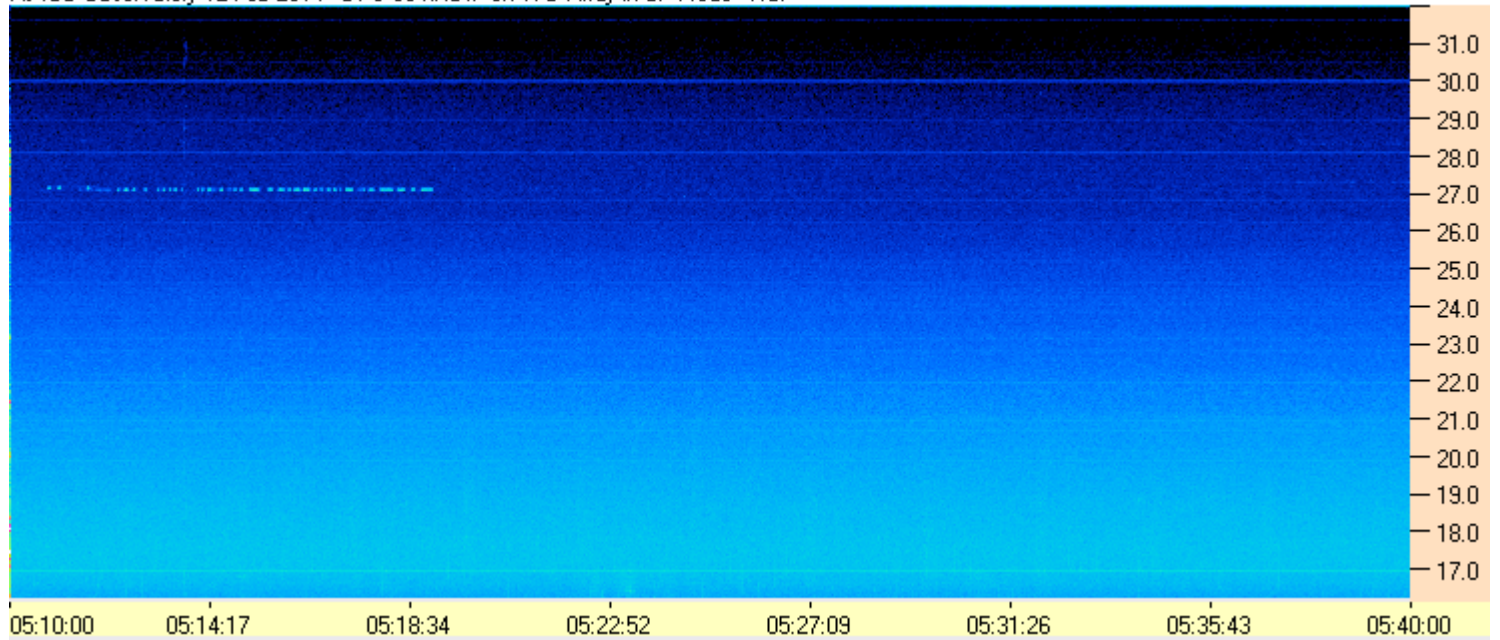
**AJ4CO Observatory, 12 Feb 2014**

---





AJ4CO Observatory 12 Feb 2014 - DPS 60 kHz IF on TFD Array in CP Mode - RCP



AJ4CO Observatory 12 Feb 2014 - DPS 60 kHz IF on TFD Array in CP Mode - LCP

