

**Subject:** [radiojove-data] 09 Feb 2014 non-Io-C

**From:** Dave Typinski <davetyp@typnet.net>

**Date:** 02/10/2014 18:19

**To:** RadioJove-Data <radiojove-data@lists.nasa.gov>

Here's some strong non-Io-C from Sunday morning.

LCP at first around 0340 UTC, then strong RCP around 0430. Emission observed from 16 to 18 MHz.

Jupiter was 6° to 24° off axis.

Jupiter was trailing the Sun by 141°.

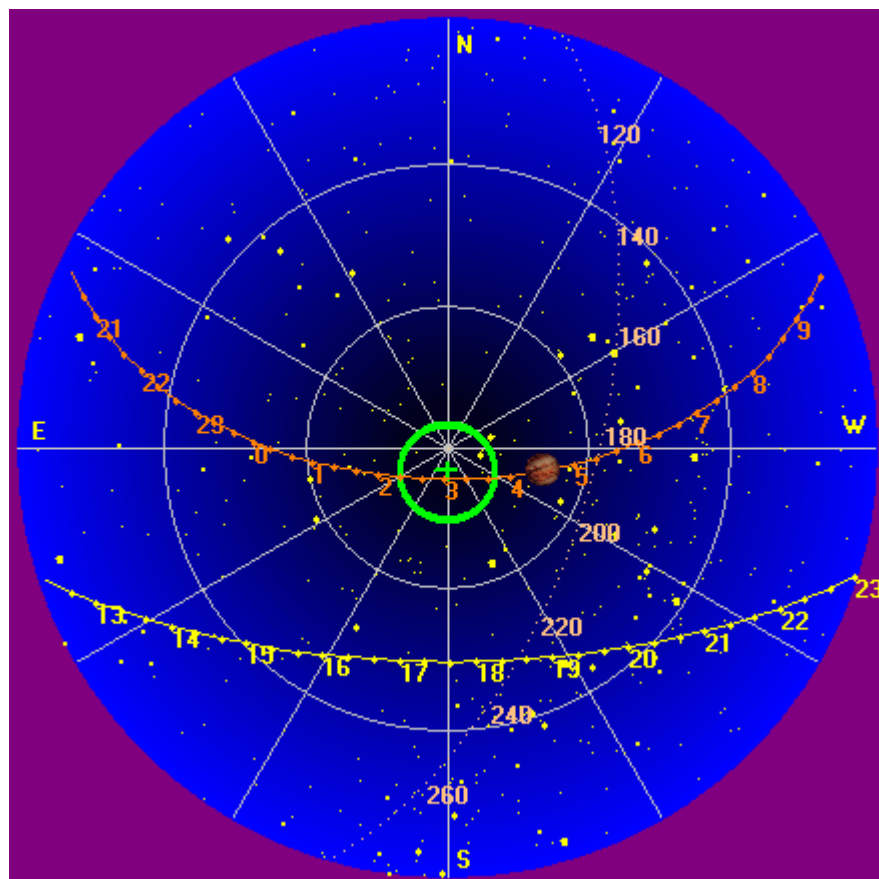
--

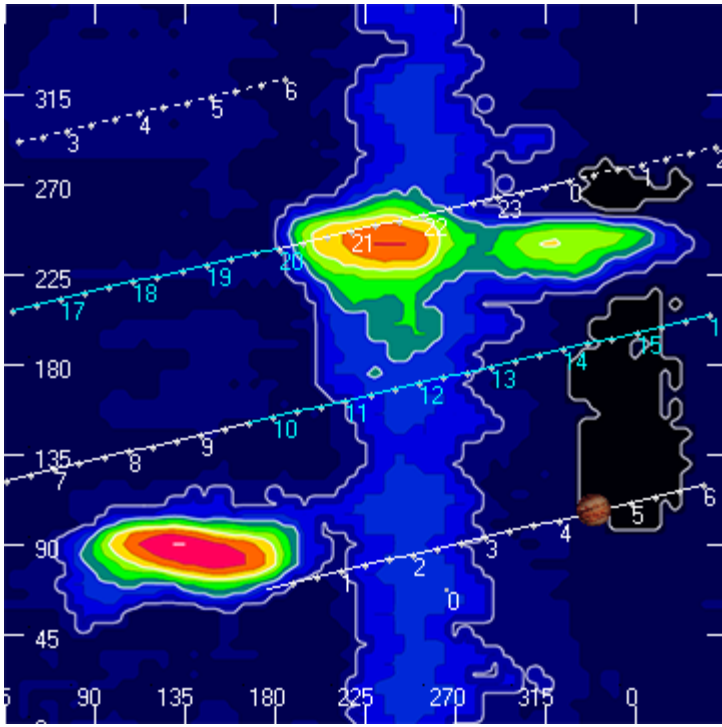
Dave

---

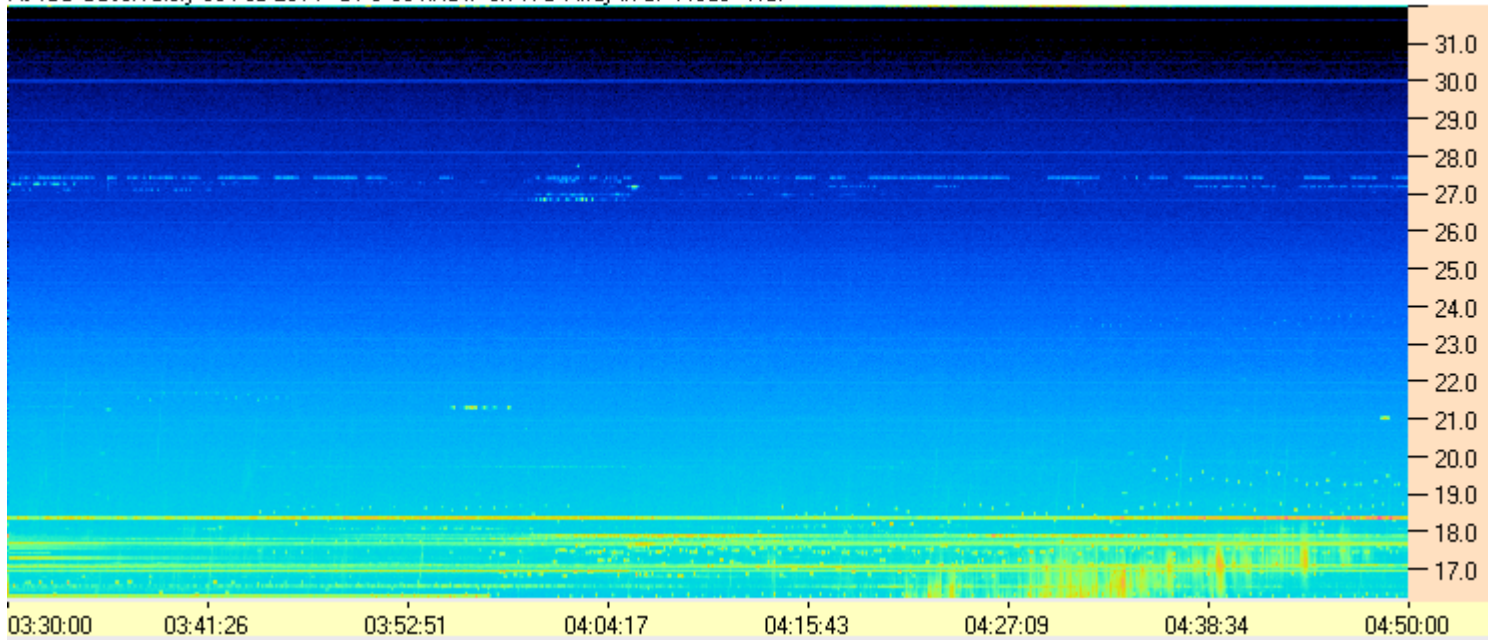
**AJ4CO Observatory, 09 Feb 2014**

---





AJ4CO Observatory 09 Feb 2014 - DPS 60 kHz IF on TFD Array in CP Mode - RCP



AJ4CO Observatory 09 Feb 2014 - DPS 60 kHz IF on TFD Array in CP Mode - LCP

