

Subject: [radiojove-data] 05 Jan 2014 non-Io-B

From: Dave Typinski <davetyp@typnet.net>

Date: 02/06/2014 20:14

To: RadioJove-Data <radiojove-data@lists.nasa.gov>

Here's some weak non-Io-B from Wednesday morning.

L bursting in RCP from 16 to 23 MHz.

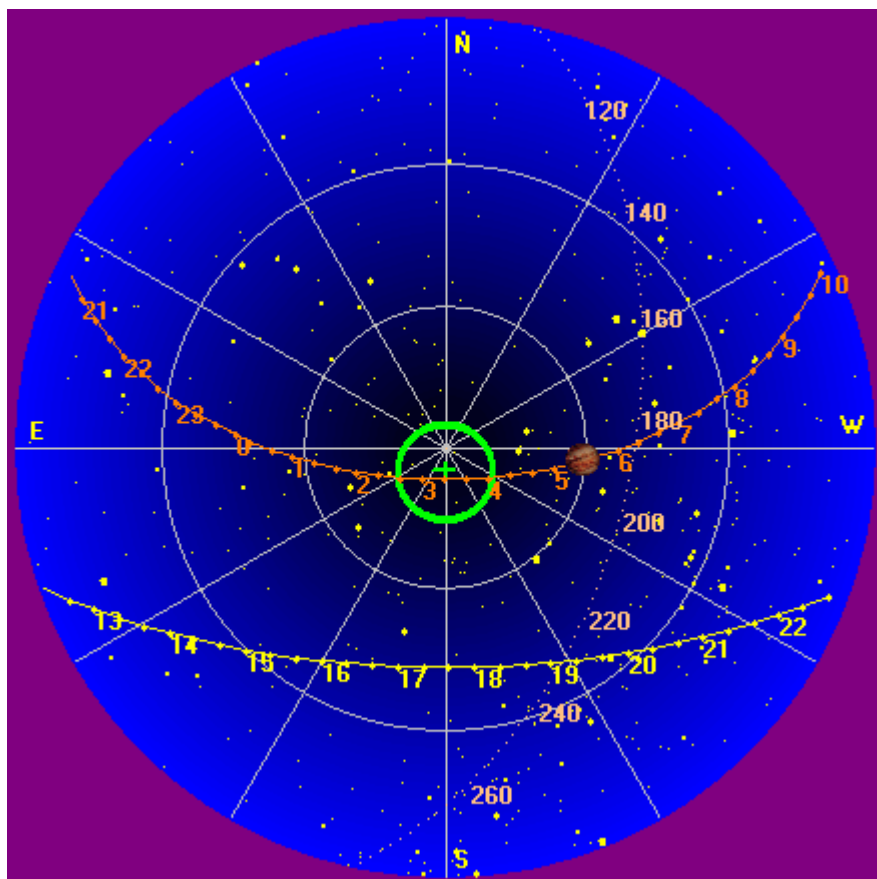
Jupiter was 28° off axis.

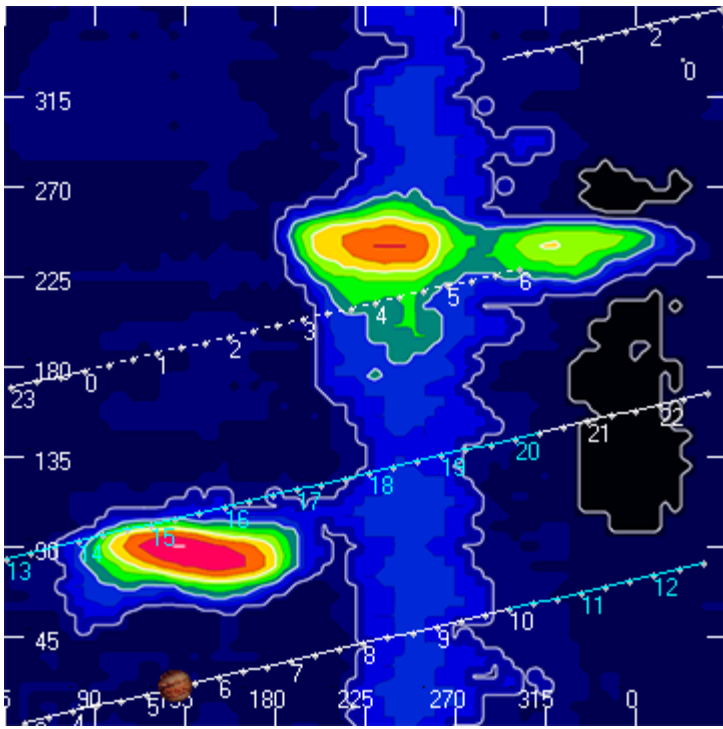
Jupiter was trailing the Sun by 145°.

--

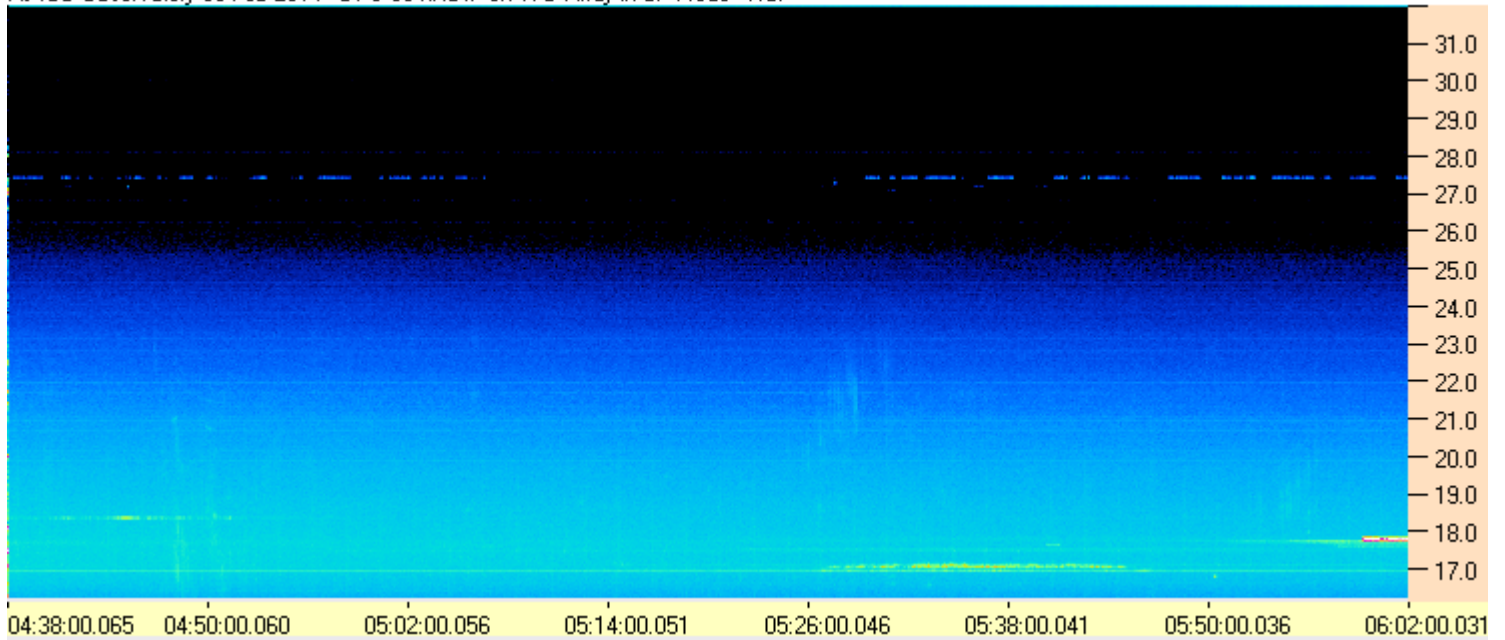
Dave

AJ4CO Observatory, 05 Feb 2014





AJ4CO Observatory 03 Feb 2014 - DPS 60 kHz IF on TFD Array in CP Mode - RCP



AJ4CO Observatory 03 Feb 2014 - DPS 60 kHz IF on TFD Array in CP Mode - LCP

