

**Subject:** [radiojove-data] 03 Feb 2014 non-Io-B

**From:** Dave Typinski <davetyp@typnet.net>

**Date:** 02/06/2014 20:13

**To:** RadioJove-Data <radiojove-data@lists.nasa.gov>

To go with Tom's weak non-Io-A of Monday Morning, here's some weak non-Io-B from slightly earlier.

L bursting in LCP from 16 to 18 MHz.

Jupiter was 14° off axis.

Jupiter was trailing the Sun by 148°.

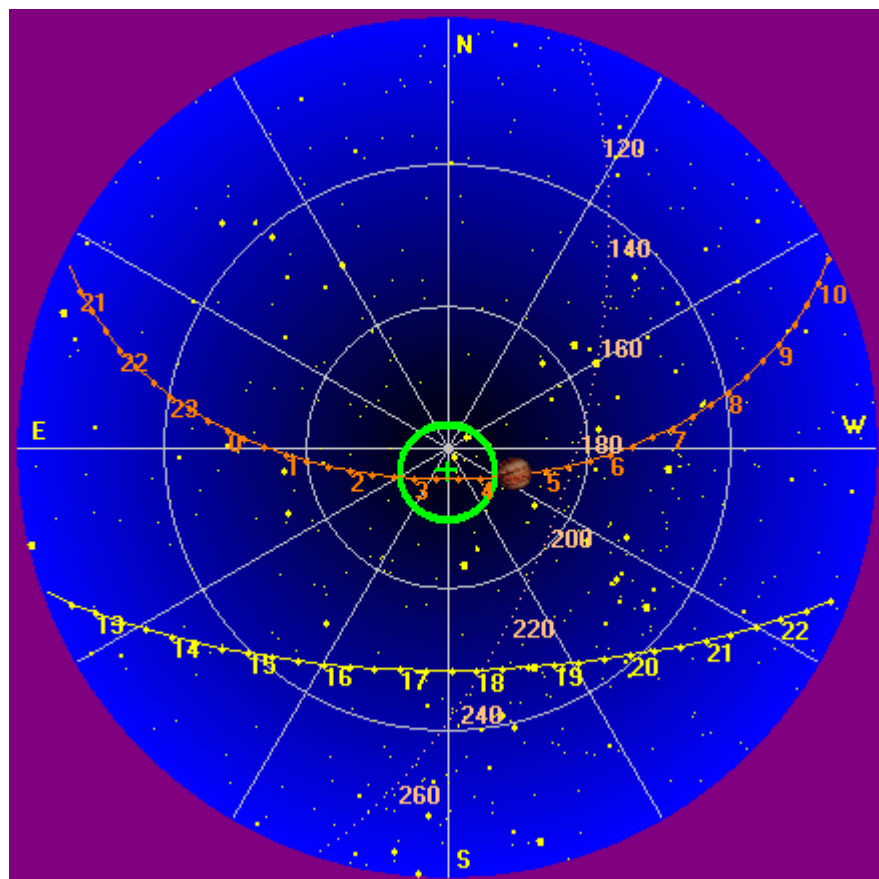
--

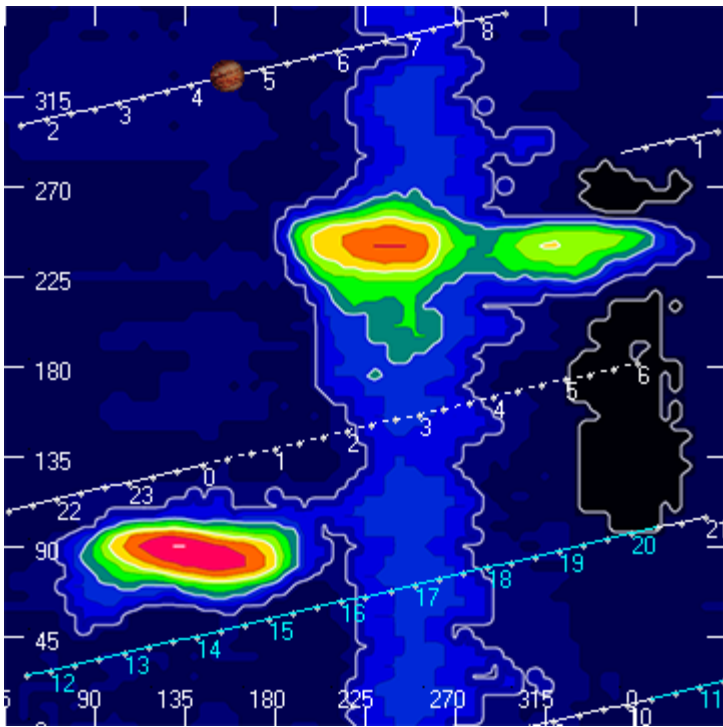
Dave

---

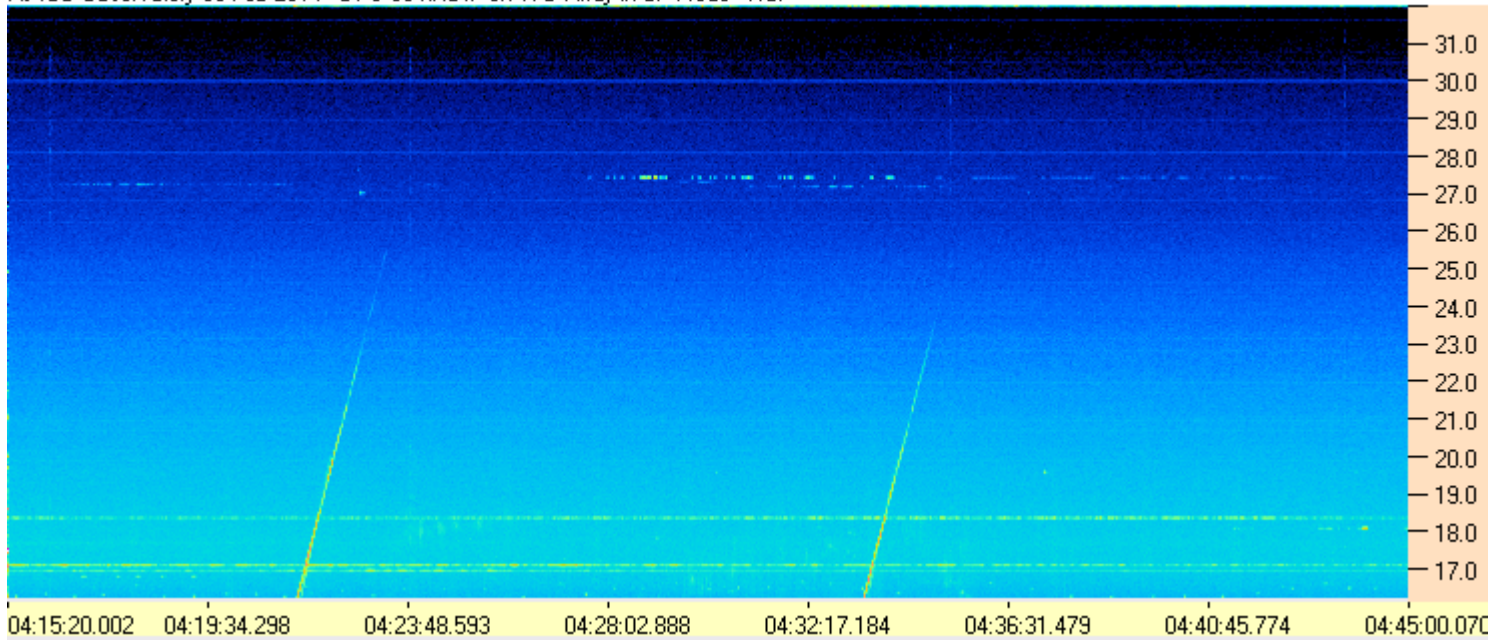
**AJ4CO Observatory, 03 Feb 2014**

---





AJ4CO Observatory 03 Feb 2014 - DPS 60 kHz IF on TFD Array in CP Mode - RCP



AJ4CO Observatory 03 Feb 2014 - DPS 60 kHz IF on TFD Array in CP Mode - LCP

