

Subject: [radiojove-data] 02 Feb 2014 non-Io-C

From: Dave Typinski <davetyp@typnet.net>

Date: 02/03/2014 16:58

To: RadioJove-Data <radiojove-data@lists.nasa.gov>

Here's some weak non-Io-C from Sunday morning.

Notable due to it's position on the phase plane -- we rarely see emission in this region.

L bursting in LCP from 16 to 21 MHz.

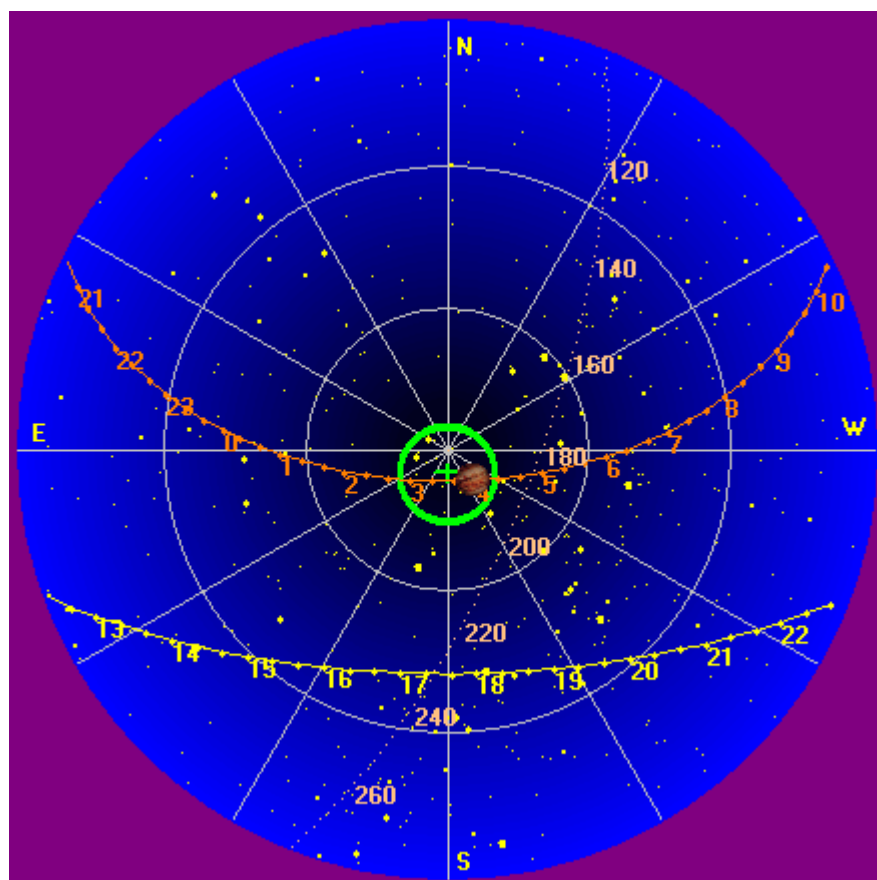
Jupiter was 4° to 7° off axis.

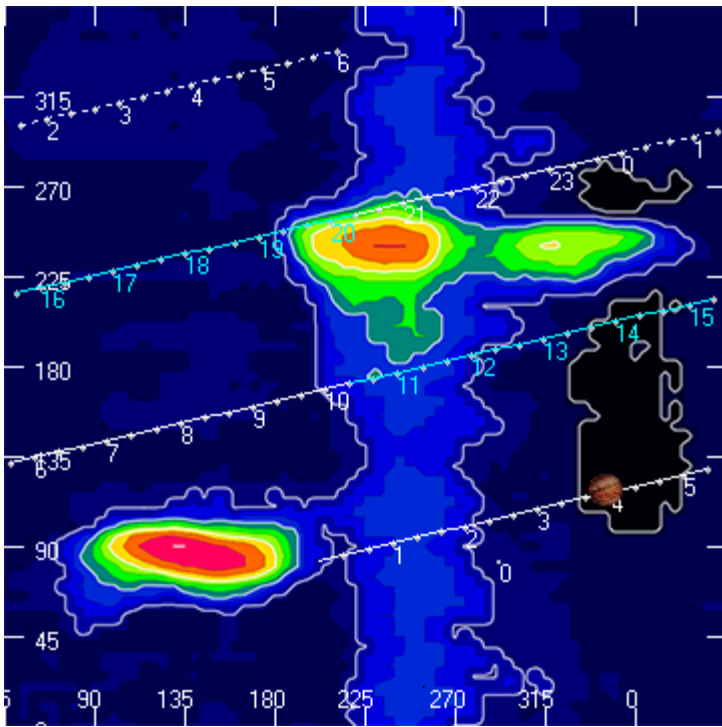
Jupiter was trailing the Sun by 152°.

--

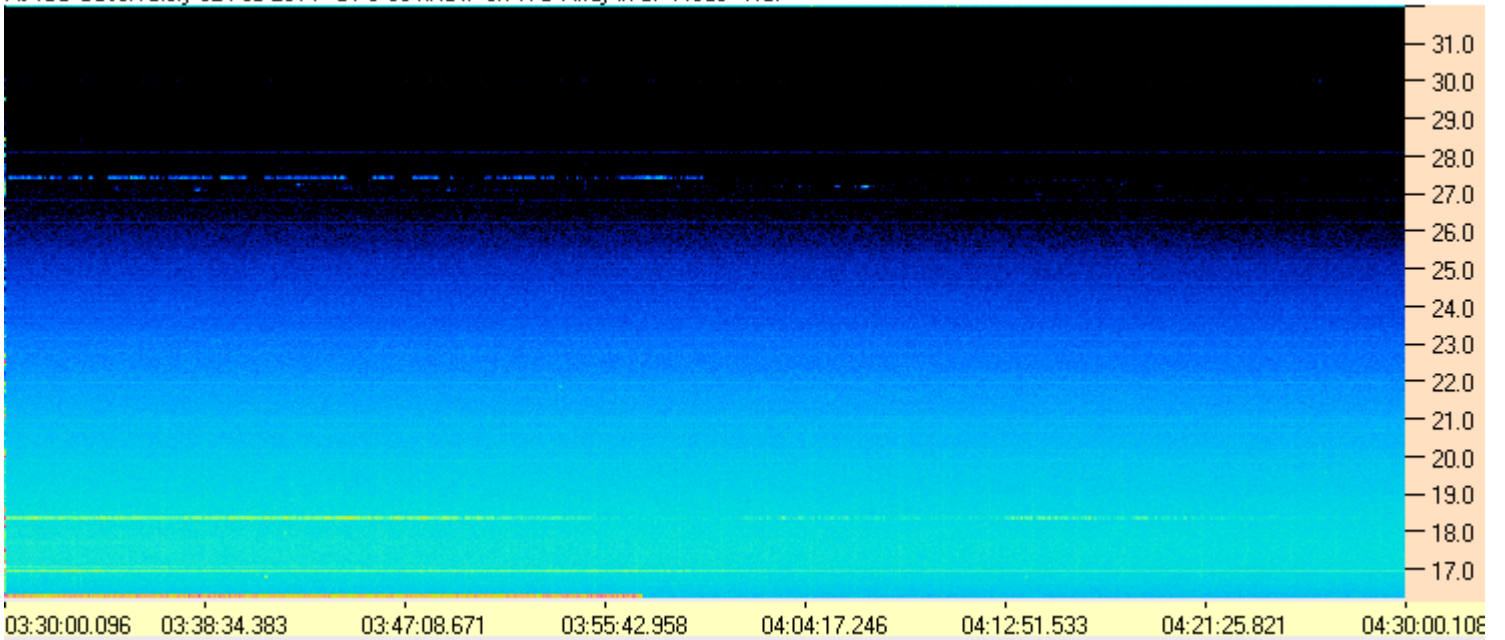
Dave

AJ4CO Observatory, 02 Feb 2014





AJ4CO Observatory 02 Feb 2014 - DPS 60 kHz IF on TFD Array in CP Mode - RCP



AJ4CO Observatory 02 Feb 2014 - DPS 60 kHz IF on TFD Array in CP Mode - LCP

