

**Subject:** [radiojove-data] 29 Jan 2014 non-Io-B

**From:** Dave Typinski <davetyp@typnet.net>

**Date:** 01/30/2014 17:59

**To:** RadioJove-Data <radiojove-data@lists.nasa.gov>

Here's some non-Io-B from Wednesday morning. A very weak event, barely detectable with the TFD array. Probably not worth reporting. However, I'm trying to establish a performance baseline to use during subsequent apparitions, so here it is anyway.

All RCP L bursting, 16-23 MHz. Too weak to know if there are lanes there or not.

Jupiter was  $16^\circ$  to  $24^\circ$  off axis.

Jupiter was trailing the Sun by  $153^\circ$ .

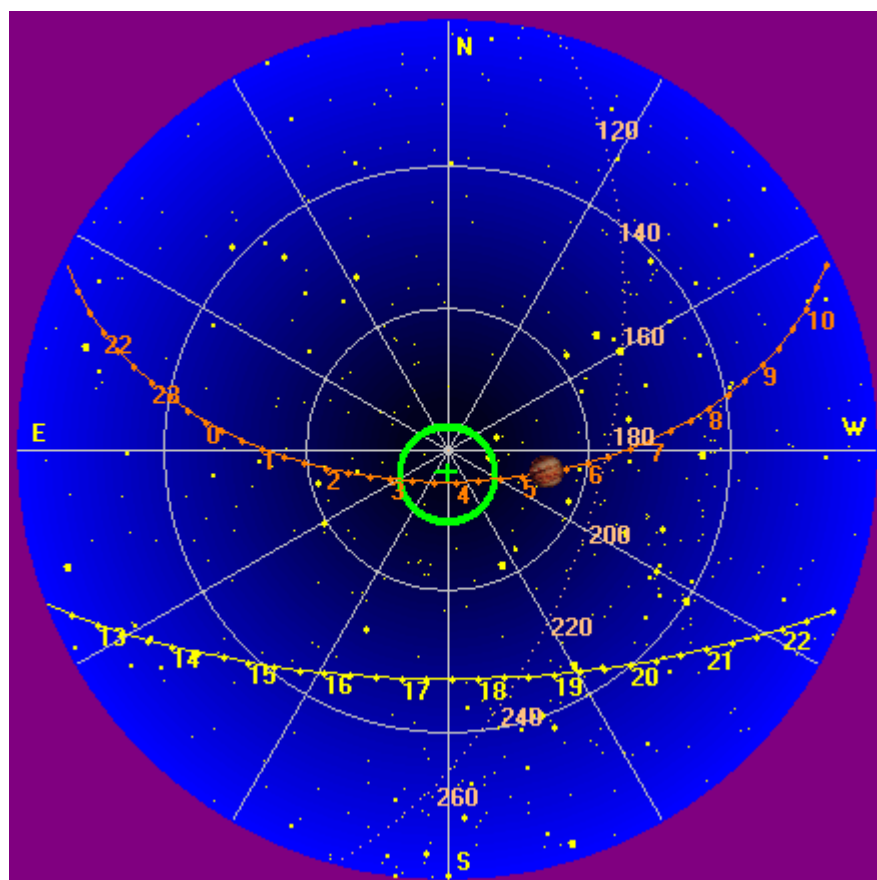
--

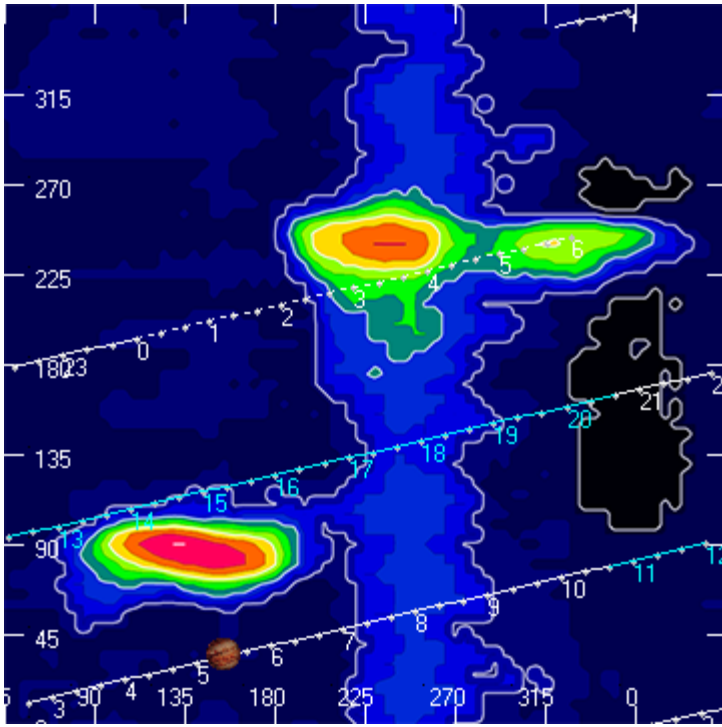
Dave

---

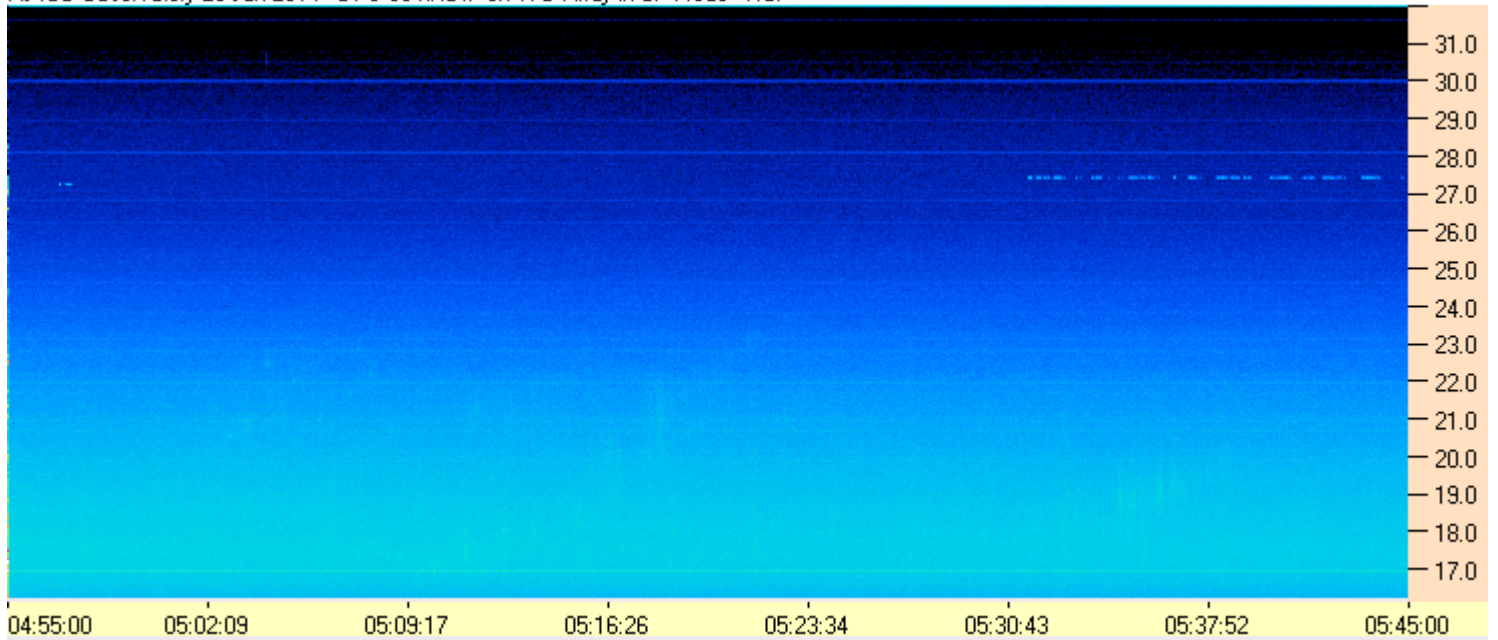
**AJ4CO Observatory, 29 Jan 2014**

---





AJ4CO Observatory 29 Jan 2014 - DPS 60 kHz IF on TFD Array in CP Mode - RCP



AJ4CO Observatory 29 Jan 2014 - DPS 60 kHz IF on TFD Array in CP Mode - LCP

