

Subject: [radiojove-data] 28 Jan 2014 non-Io-A

From: Dave Typinski <davetyp@typnet.net>

Date: 01/28/2014 21:03

To: RadioJove-Data <radiojove-data@lists.nasa.gov>

Adding to Wes's nice report, here's some nice strong non-Io-A from Tuesday morning.

All RCP L bursting, 16-25 MHz

No modulation lanes evident.

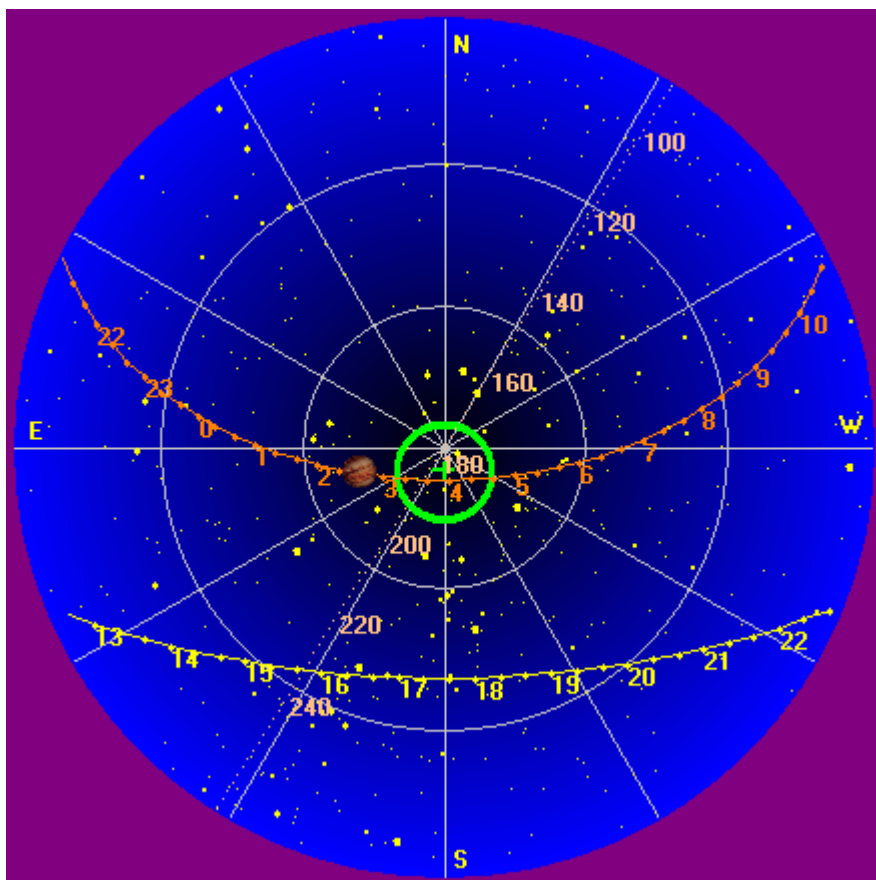
Jupiter was 23° to 14° off axis.

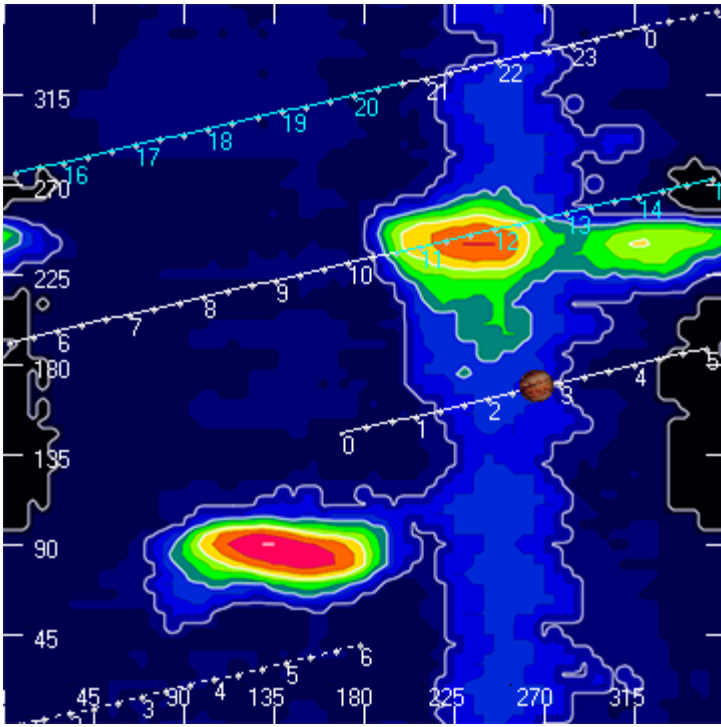
Jupiter was trailing the Sun by 155°.

--

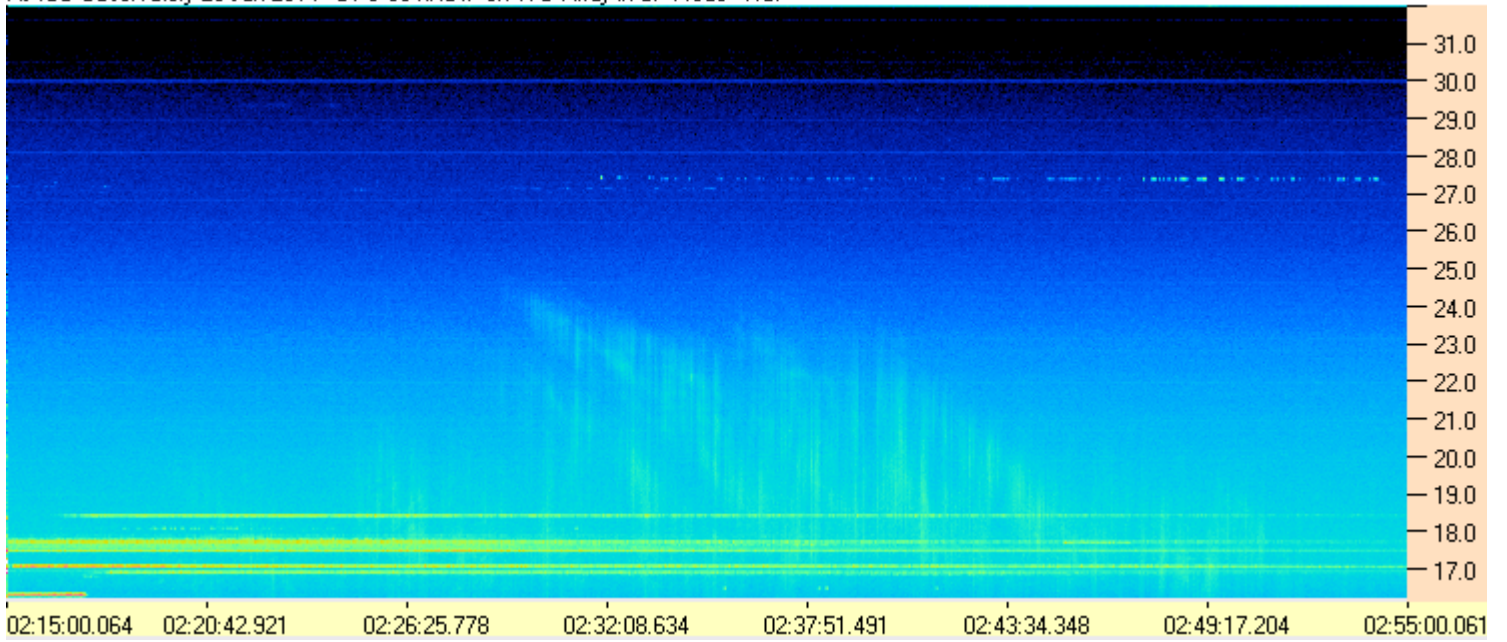
Dave

AJ4CO Observatory, 28 Jan 2014





AJ4CO Observatory 28 Jan 2014 - DPS 60 kHz IF on TFD Array in CP Mode - RCP



AJ4CO Observatory 28 Jan 2014 - DPS 60 kHz IF on TFD Array in CP Mode - LCP

