

Subject: [radiojove-data] 27 Jan 2014 non-Io-B

From: Dave Typinski <davetyp@typnet.net>

Date: 01/28/2014 21:02

To: RadioJove-Data <radiojove-data@lists.nasa.gov>

Here's some non-Io-B from Monday morning.

All RCP L bursting, 16-20 MHz. A few faint modulation lanes evident.

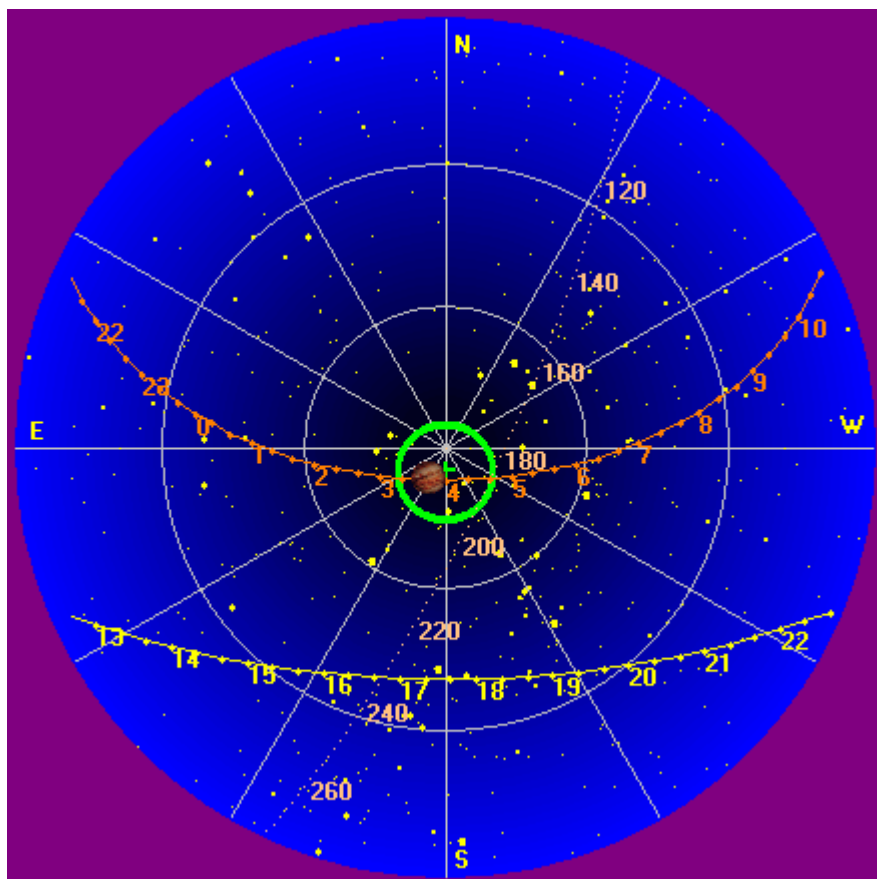
Jupiter was 4° off axis.

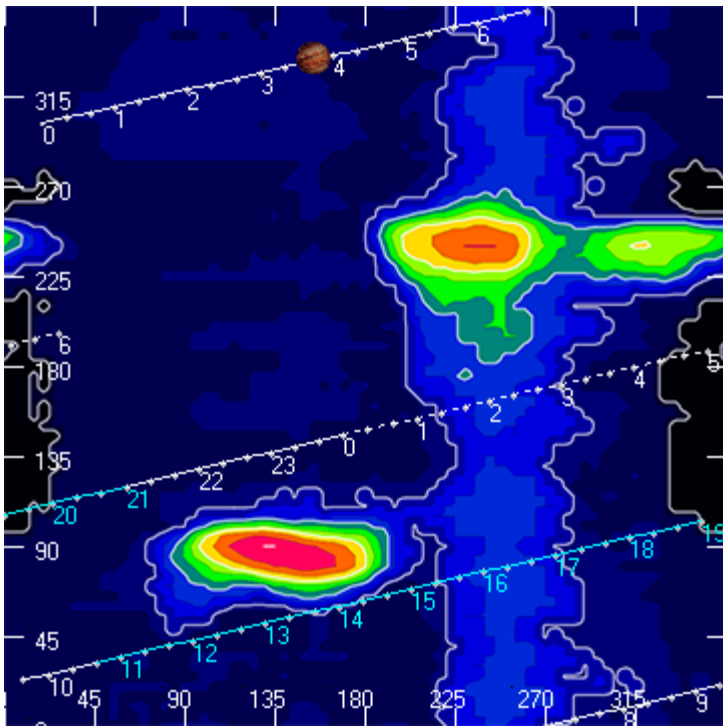
Jupiter was trailing the Sun by 156°.

--

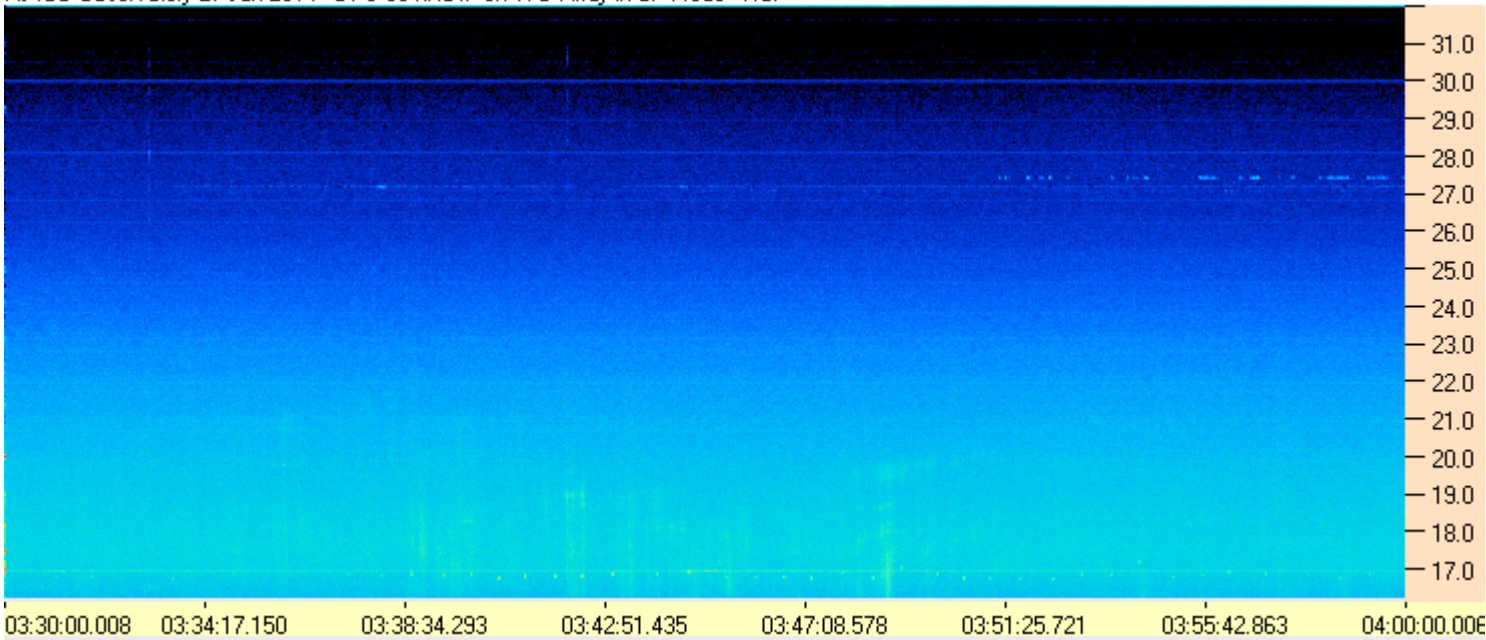
Dave

AJ4CO Observatory, 27 Jan 2014





AJ4CO Observatory 27 Jan 2014 - DPS 60 kHz IF on TFD Array in CP Mode - RCP



AJ4CO Observatory 27 Jan 2014 - DPS 60 kHz IF on TFD Array in CP Mode - LCP

