

Subject: [radiojove-data] 27 Jan 2014 non-Io-A

From: Dave Typinski <davetyp@typnet.net>

Date: 01/28/2014 21:02

To: RadioJove-Data <radiojove-data@lists.nasa.gov>

Here's some non-Io-A from Monday morning. Tom, I didn't see anything at 0730, but that was pretty far (ca. 50 degs) off axis for me.

All RCP L bursting, 16-19 MHz. A few faint positive drift modulation lanes evident.

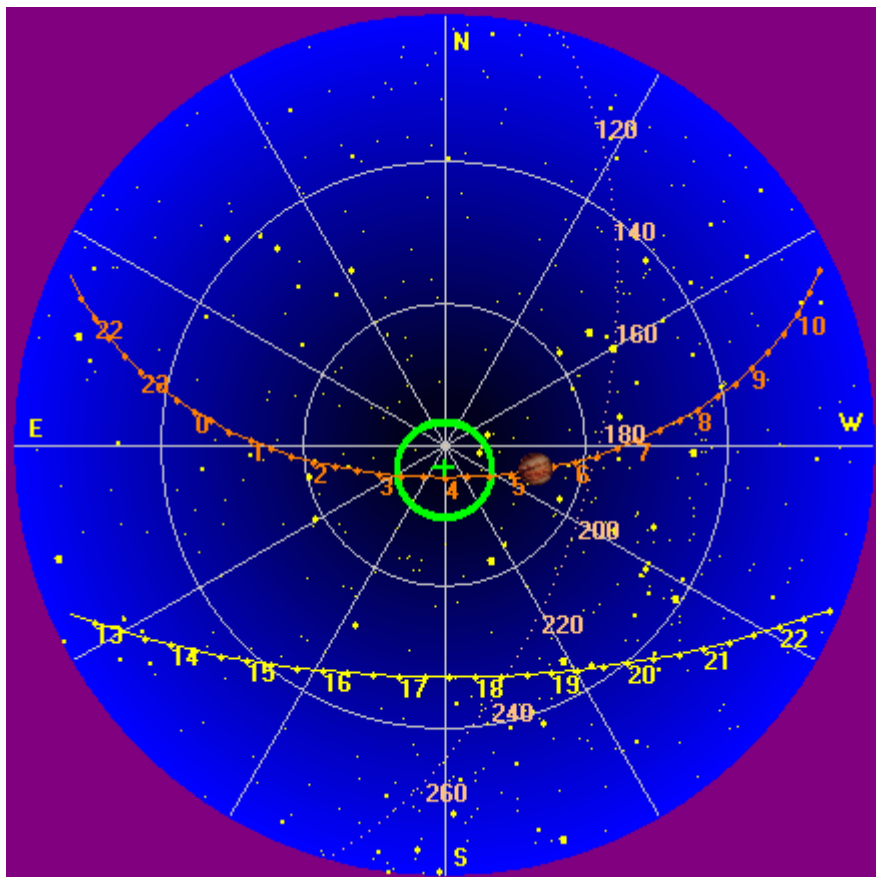
Jupiter was 19° off axis.

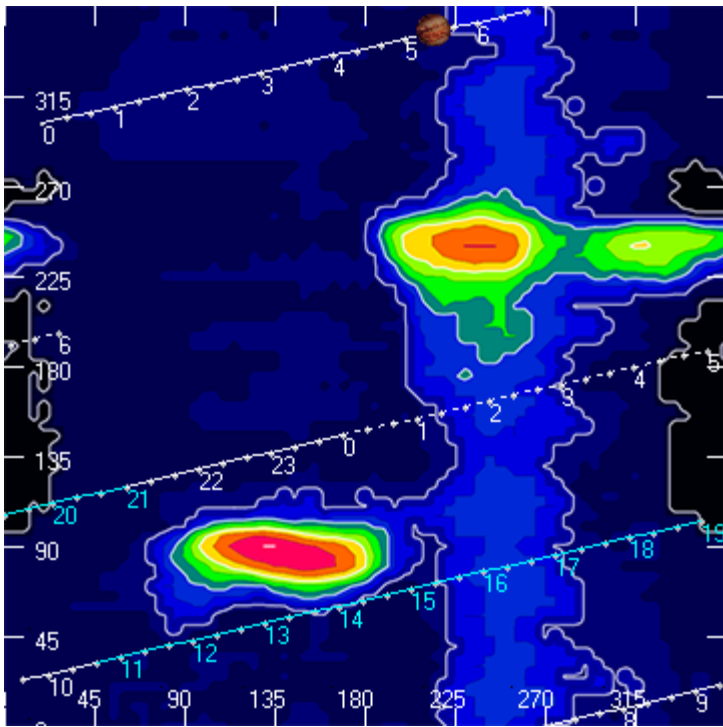
Jupiter was trailing the Sun by 156°.

--

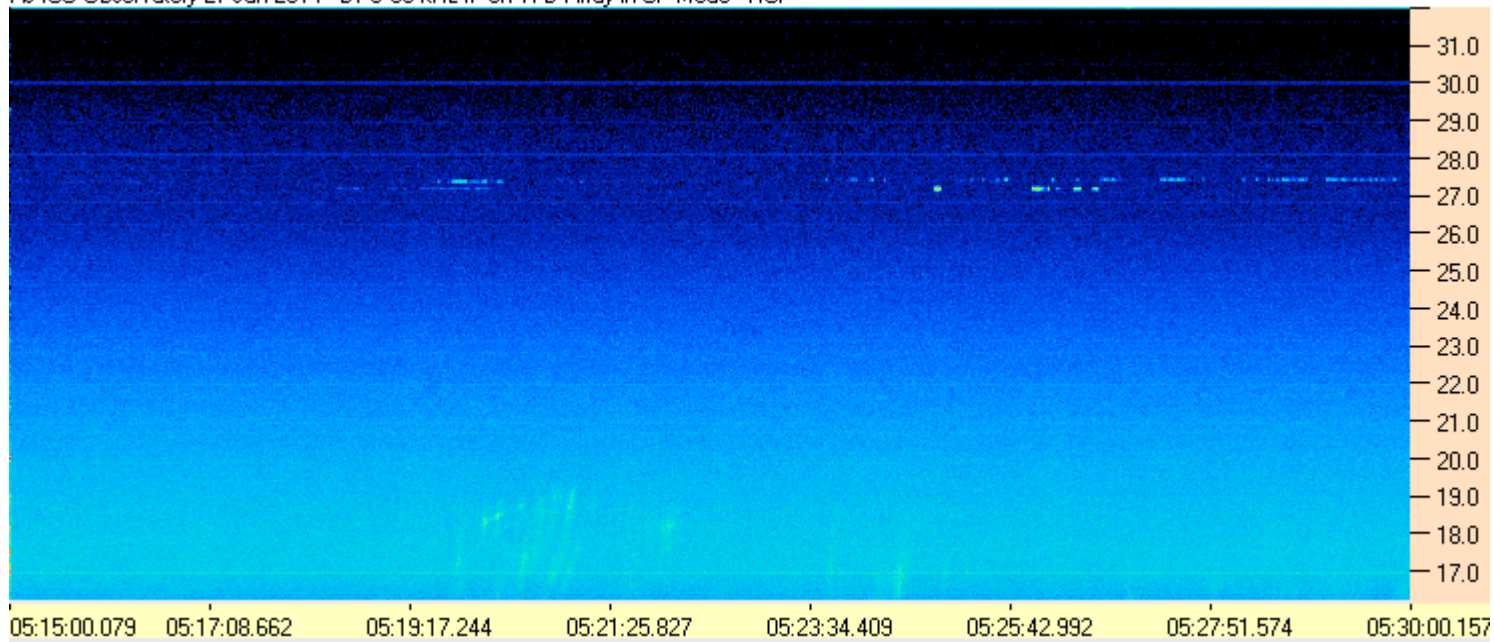
Dave

AJ4CO Observatory, 27 Jan 2014





AJ4CO Observatory 27 Jan 2014 - DPS 60 kHz IF on TFD Array in CP Mode - RCP



AJ4CO Observatory 27 Jan 2014 - DPS 60 kHz IF on TFD Array in CP Mode - LCP

