

**Subject:** [radiojove-data] 21 Jan 2014 non-Io-C

**From:** Dave Typinski <davetyp@typnet.net>

**Date:** 01/25/2014 01:36

**To:** RadioJove-Data <radiojove-data@lists.nasa.gov>

Here's some non-Io-C from Tuesday morning.

All RCP L bursting, 16-21 MHz. Wide, pronounced modulation lanes, pos & neg drift.

Jupiter was 30° to 8° off axis.

Jupiter was trailing the Sun by 162°.

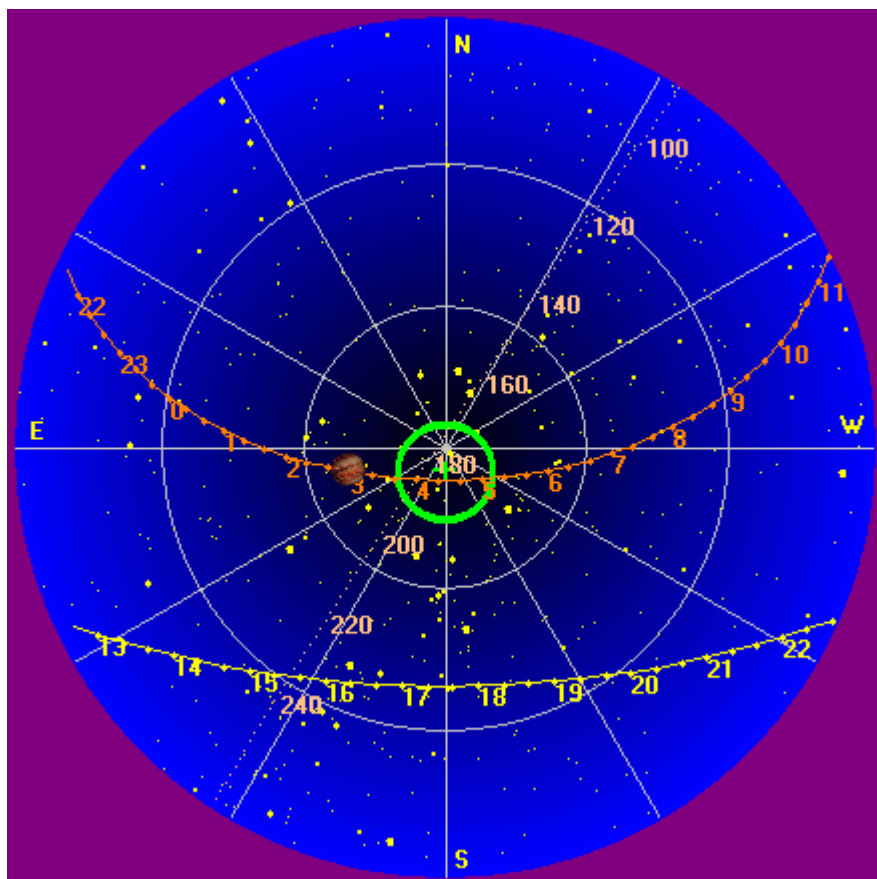
--

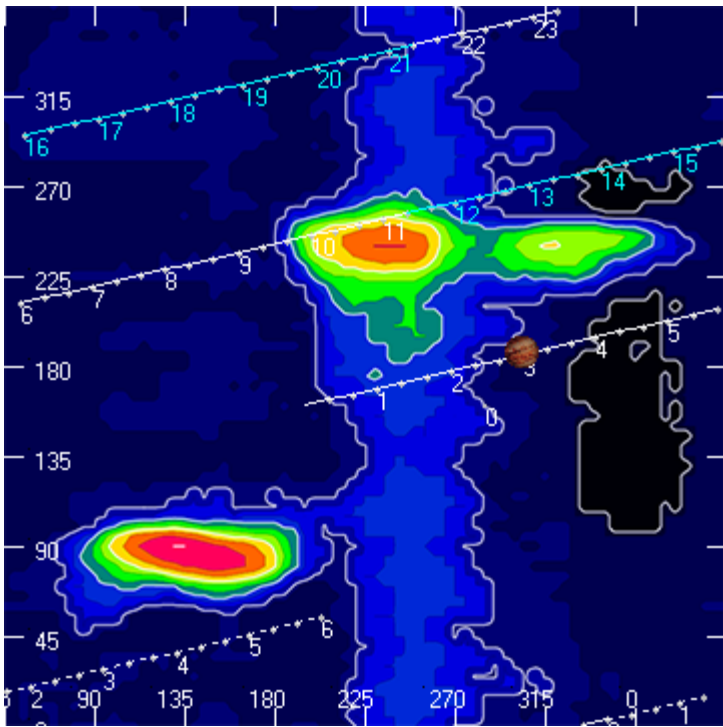
Dave

---

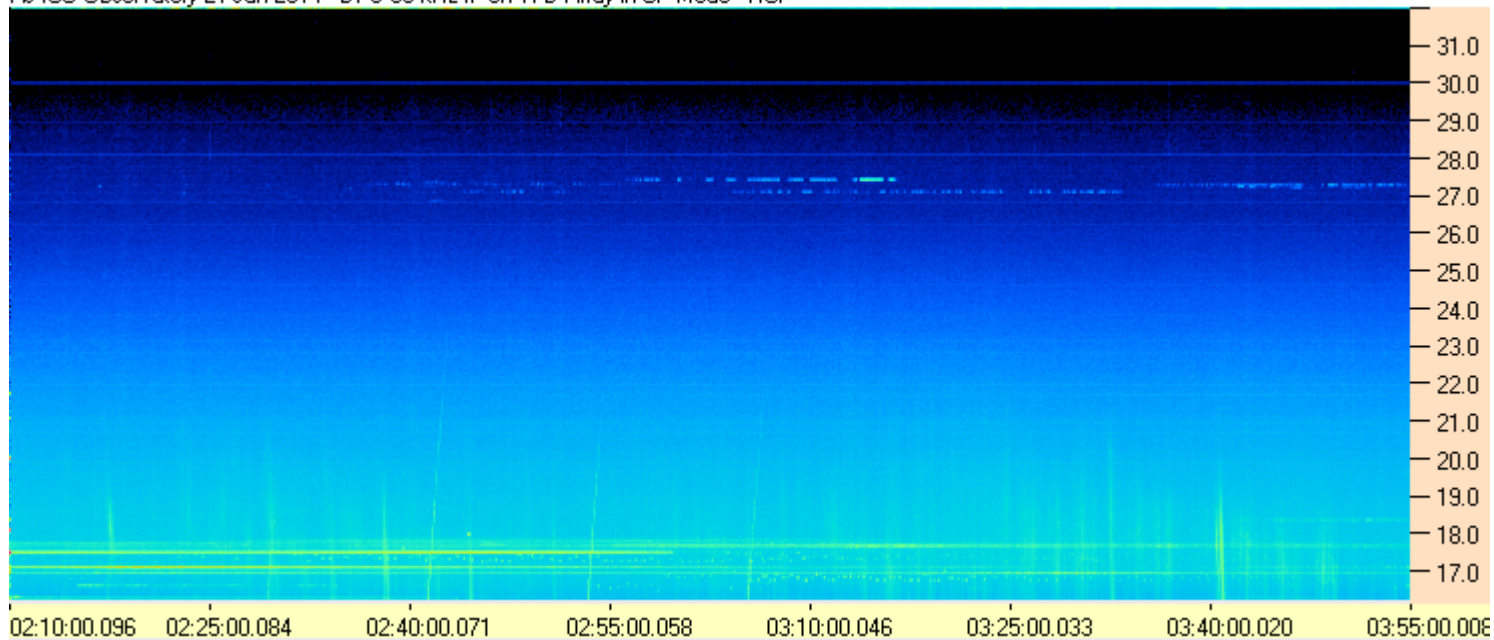
**AJ4CO Observatory, 21 Jan 2014**

---

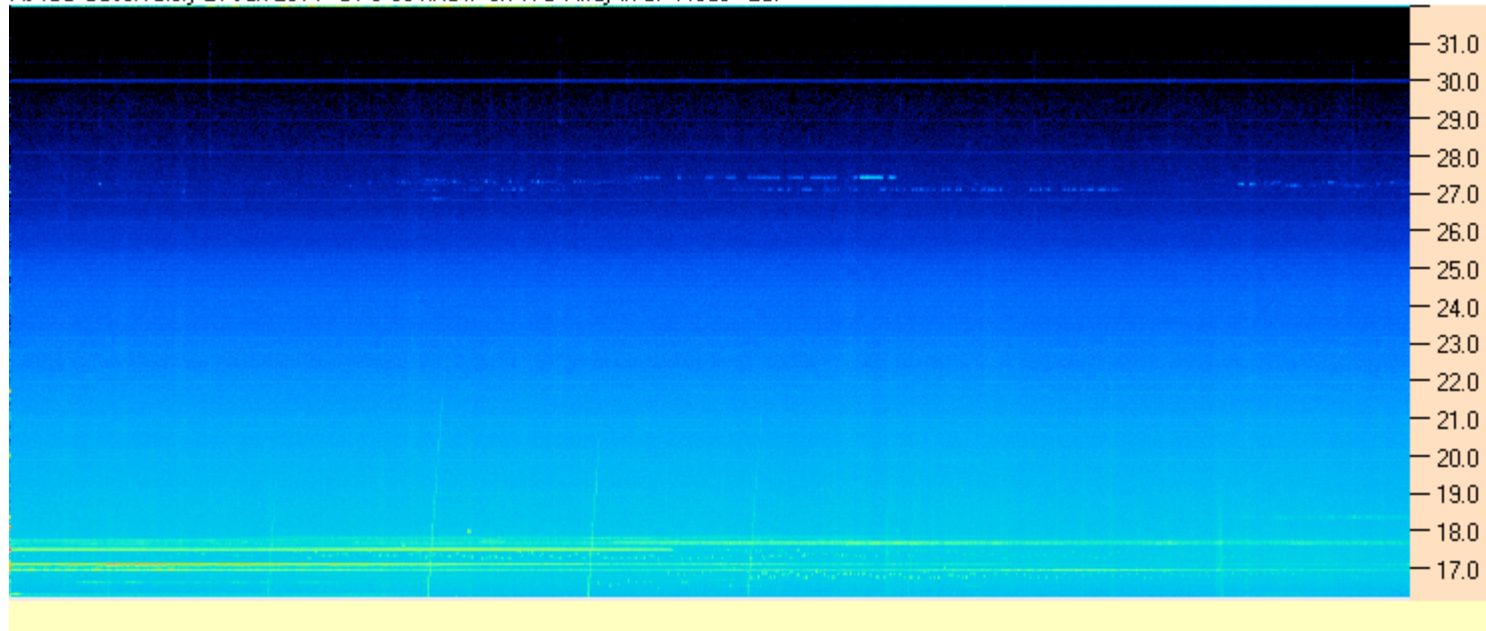




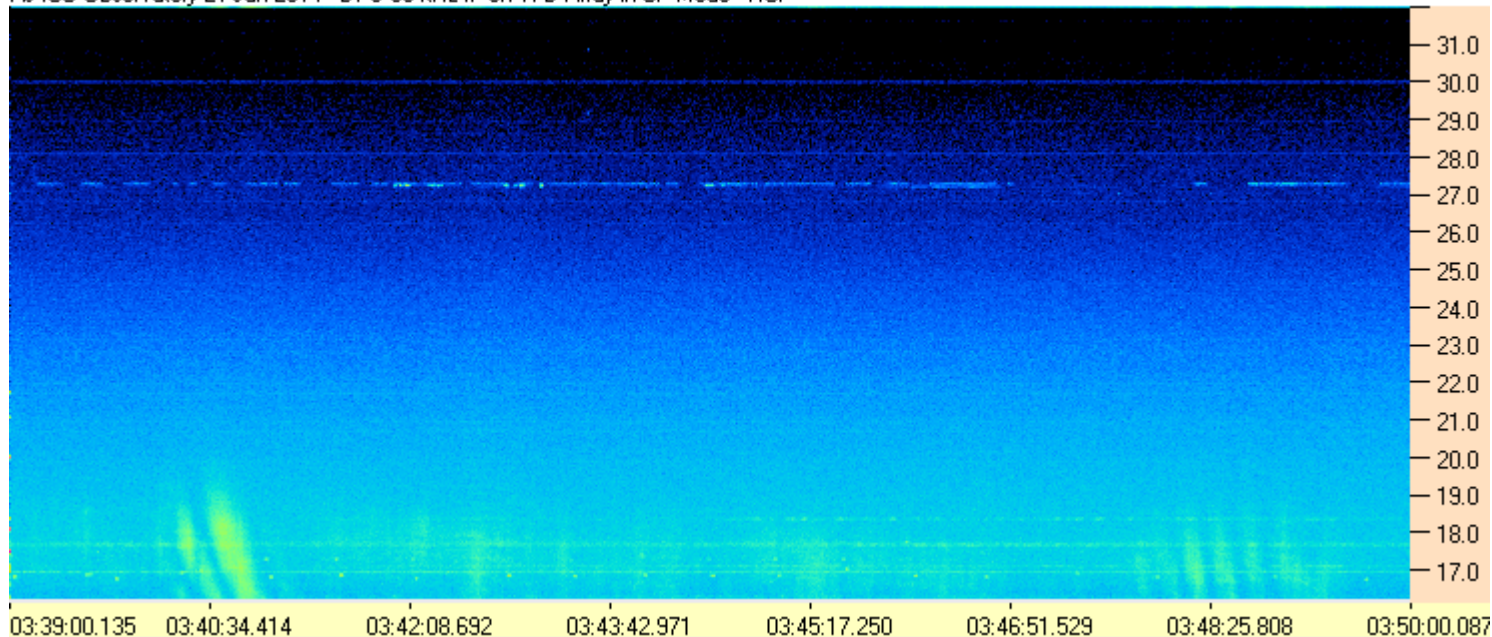
AJ4CO Observatory 21 Jan 2014 - DPS 60 kHz IF on TFD Array in CP Mode - RCP



AJ4CO Observatory 21 Jan 2014 - DPS 60 kHz IF on TFD Array in CP Mode - LCP



AJ4CO Observatory 21 Jan 2014 - DPS 60 kHz IF on TFD Array in CP Mode - RCP



AJ4CO Observatory 21 Jan 2014 - DPS 60 kHz IF on TFD Array in CP Mode - LCP

