

**Subject:** [radiojove-data] 18 Jan 2014 non-Io-A/C

**From:** Dave Typinski <davetyp@typnet.net>

**Date:** 01/20/2014 21:43

**To:** RadioJove-Data <radiojove-data@lists.nasa.gov>

Adding to Jim B's nice report, here's some non-Io-A/C from Saturday morning.

All RCP L bursting, 17-28 MHz. No modulation lanes evident.

Interesting period of L bursting circa 0425 with interplanetary scintillation banding with diverging slopes.

Jupiter was 6° to 14° off axis.

Jupiter was trailing the Sun by 166°.

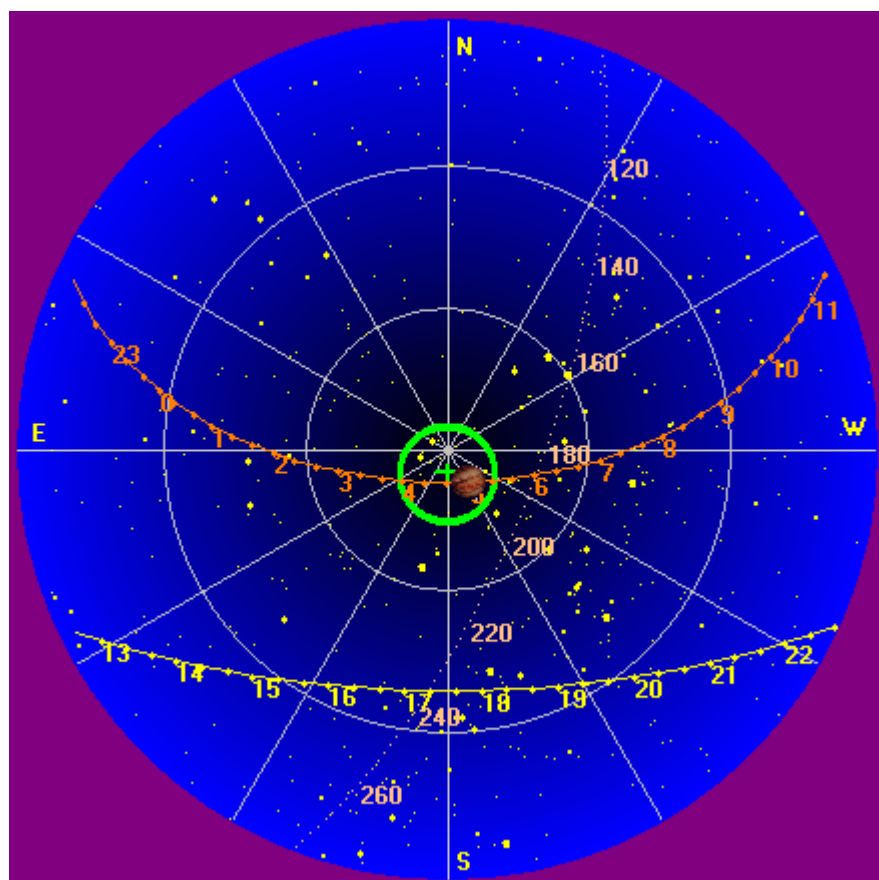
--

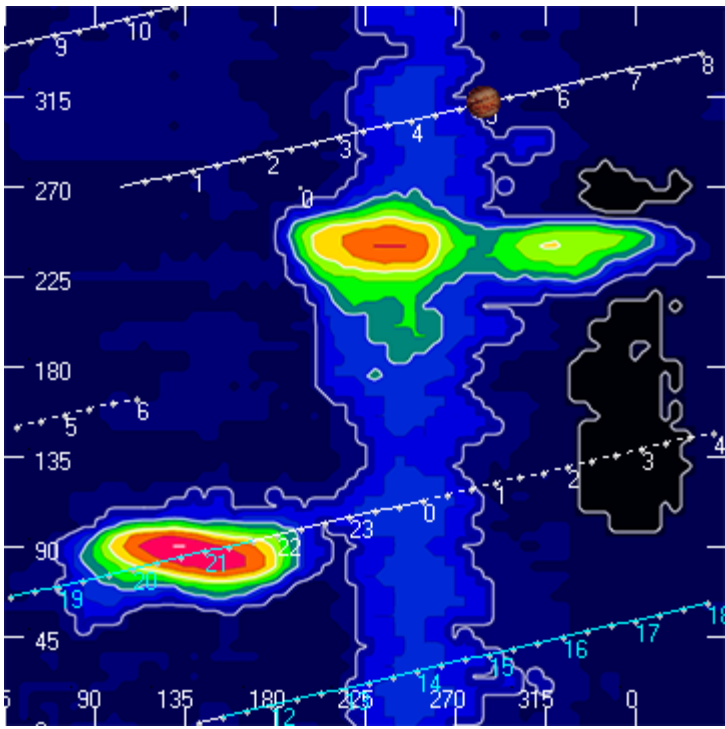
Dave

---

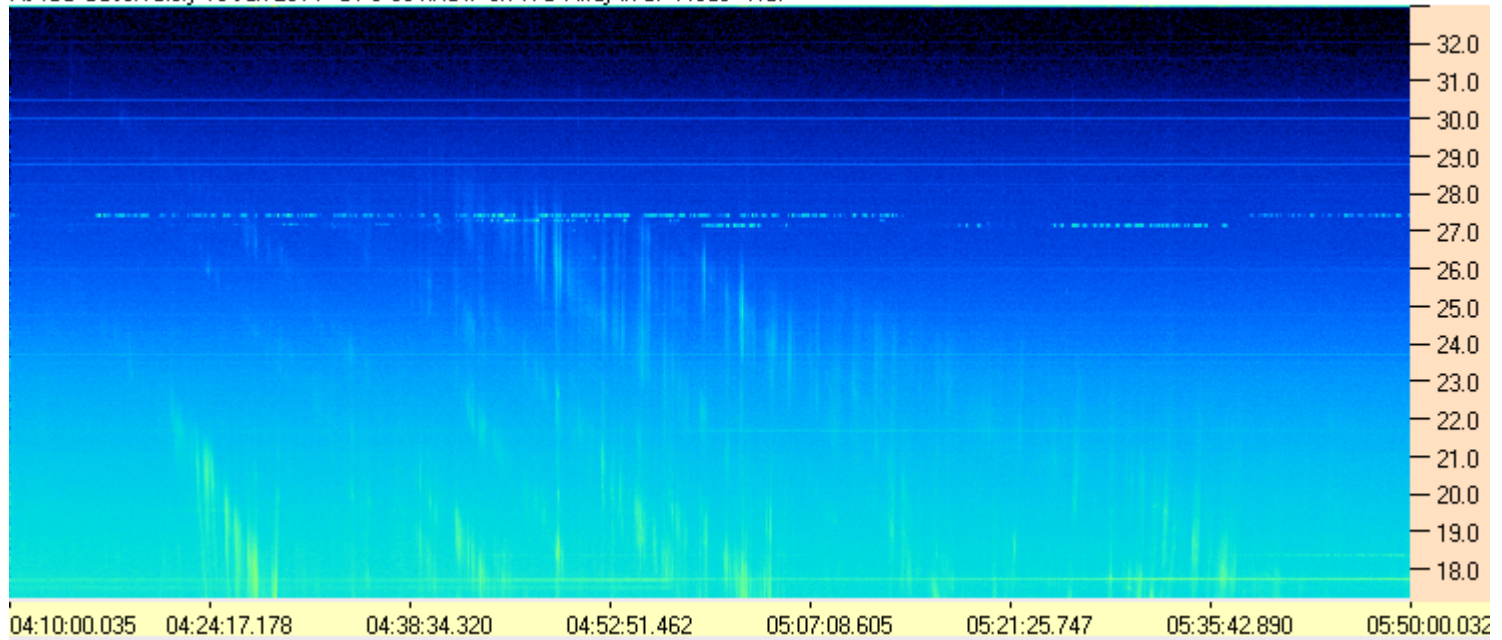
**AJ4CO Observatory, 18 Jan 2014**

---

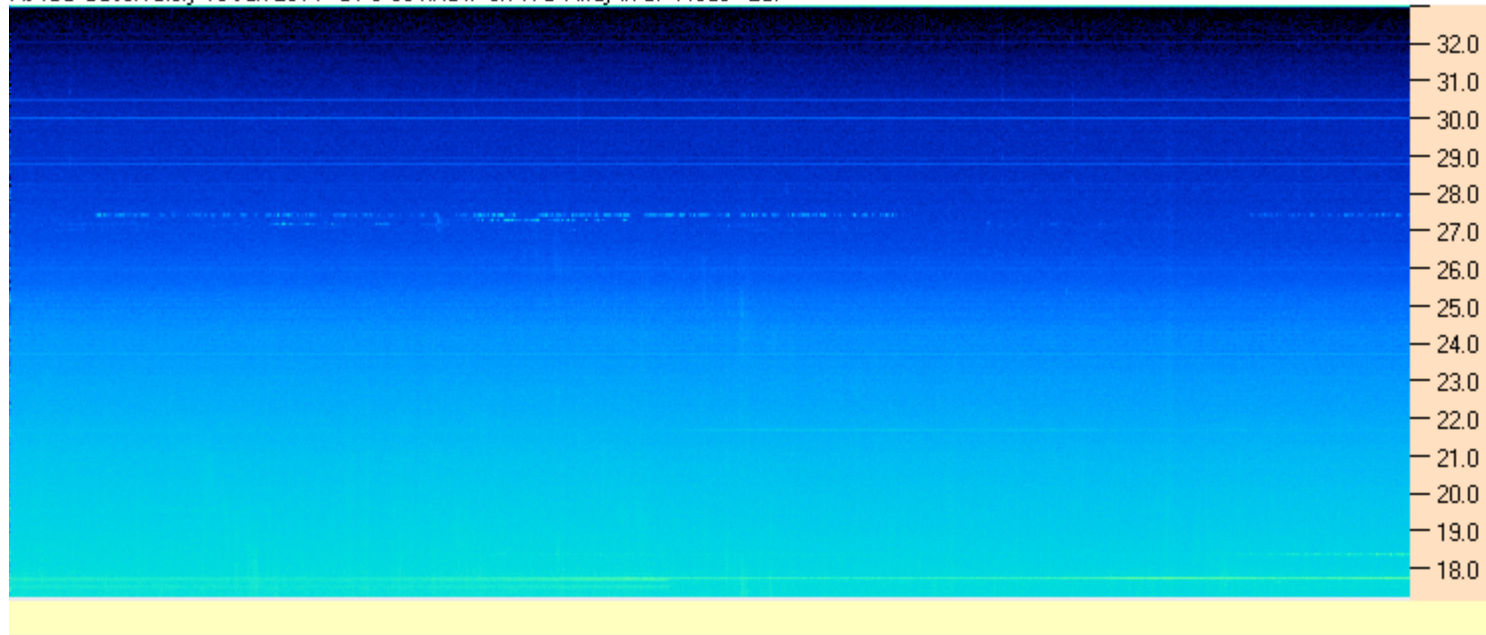




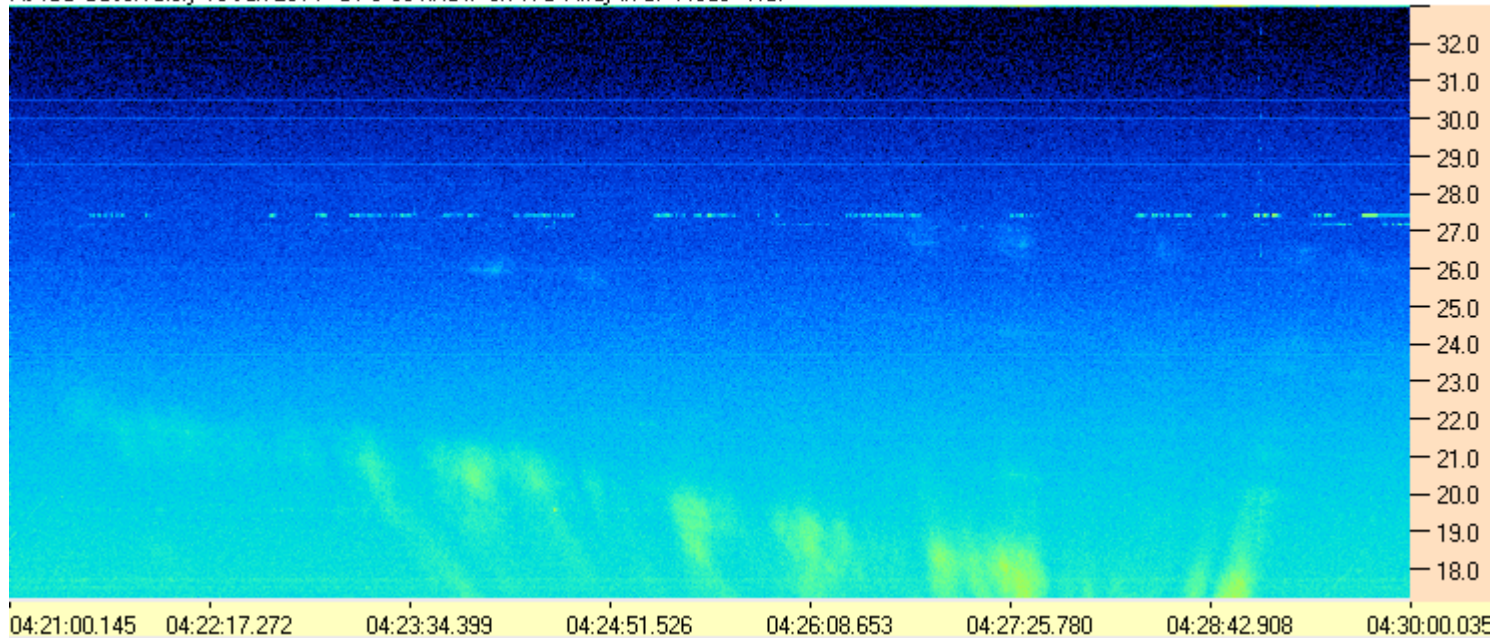
AJ4CO Observatory 18 Jan 2014 - DPS 60 kHz IF on TFD Array in CP Mode - RCP



AJ4CO Observatory 18 Jan 2014 - DPS 60 kHz IF on TFD Array in CP Mode - LCP



AJ4CO Observatory 18 Jan 2014 - DPS 60 kHz IF on TFD Array in CP Mode - RCP



01/18/2014 by AJ4CO RSP in High Springs, FL

